



Chipsmall Limited consists of a professional team with an average of over 10 year of expertise in the distribution of electronic components. Based in Hongkong, we have already established firm and mutual-benefit business relationships with customers from,Europe,America and south Asia,supplying obsolete and hard-to-find components to meet their specific needs.

With the principle of “Quality Parts,Customers Priority,Honest Operation,and Considerate Service”,our business mainly focus on the distribution of electronic components. Line cards we deal with include Microchip,ALPS,ROHM,Xilinx,Pulse,ON,Everlight and Freescale. Main products comprise IC,Modules,Potentiometer,IC Socket,Relay,Connector.Our parts cover such applications as commercial,industrial, and automotives areas.

We are looking forward to setting up business relationship with you and hope to provide you with the best service and solution. Let us make a better world for our industry!



Contact us

Tel: +86-755-8981 8866 Fax: +86-755-8427 6832

Email & Skype: info@chipsmall.com Web: www.chipsmall.com

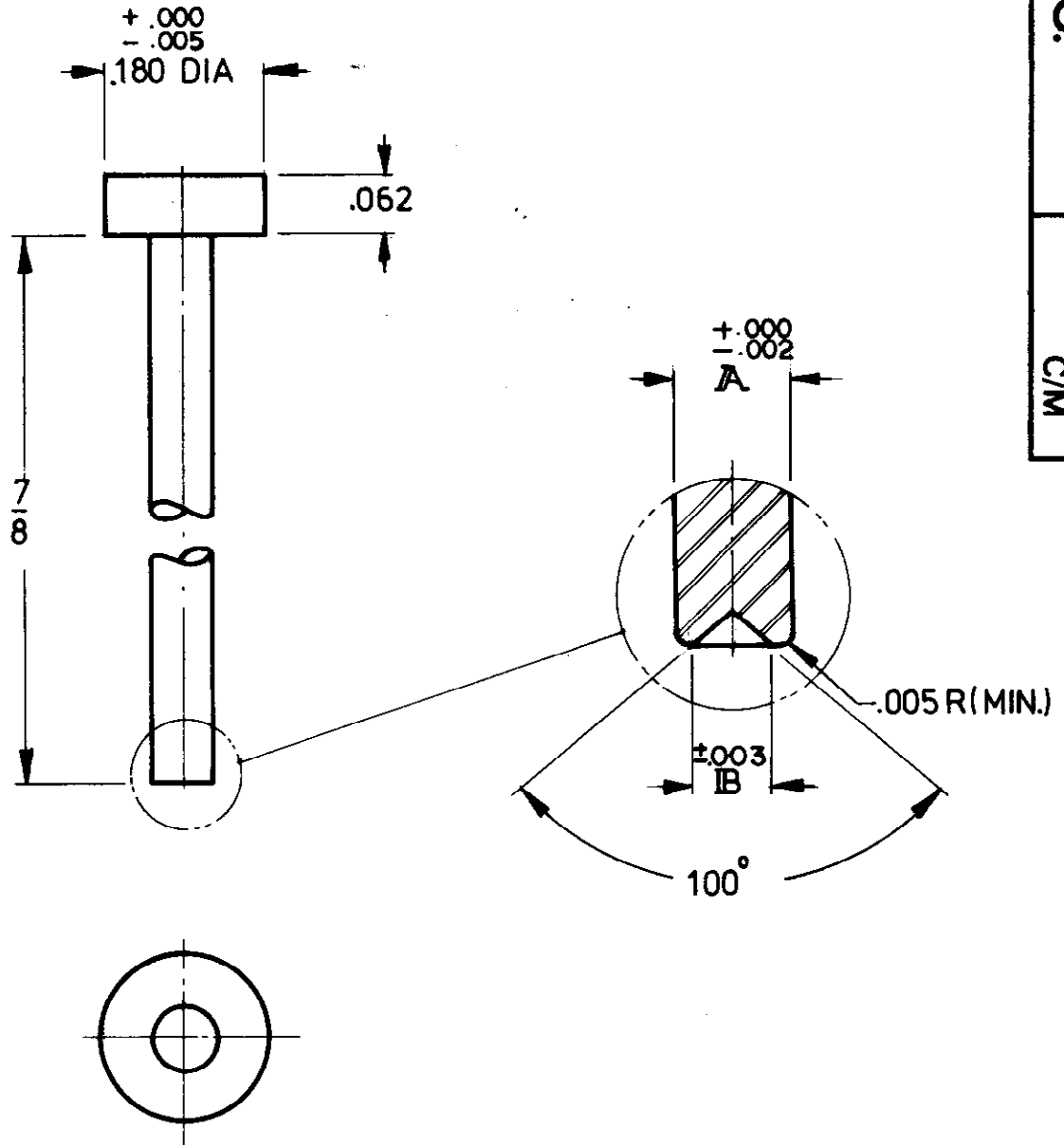
Address: A1208, Overseas Decoration Building, #122 Zhenhua RD., Futian, Shenzhen, China



NO.

CODE

C/M



NOTE:

HEAT TREAT TO ROCK C 52-56
 BLACK OXIDE
 BREAK ALL SHARP EDGES

P/No.	A	IB
1315	.045	.038
1316	.069	.055

KEYSTONE ELECTRONICS CORP.

ASTORIA, N.Y. 11106-2017

PART NAME RECEDING PIN

MATERIAL SAE (W1) DRILL ROD

FINISH
AS NOTED

DRAWN BY LN

DATE 8 12 83

APPROVED AA

SCALE

TOLERANCES
 FRACTIONAL $\pm .015$
 DECIMAL $\pm .005$ ANGULAR \pm
 UNLESS OTHERWISE NOTED

DWG. NO.
1315 - 1316

9.16.94 CHANGE PER ECR 94-054

A

ISSUE

DATE

REVISION