



Chipsmall Limited consists of a professional team with an average of over 10 year of expertise in the distribution of electronic components. Based in Hongkong, we have already established firm and mutual-benefit business relationships with customers from,Europe,America and south Asia,supplying obsolete and hard-to-find components to meet their specific needs.

With the principle of “Quality Parts,Customers Priority,Honest Operation,and Considerate Service”,our business mainly focus on the distribution of electronic components. Line cards we deal with include Microchip,ALPS,ROHM,Xilinx,Pulse,ON,Everlight and Freescale. Main products comprise IC,Modules,Potentiometer,IC Socket,Relay,Connector.Our parts cover such applications as commercial,industrial, and automotives areas.

We are looking forward to setting up business relationship with you and hope to provide you with the best service and solution. Let us make a better world for our industry!



## Contact us

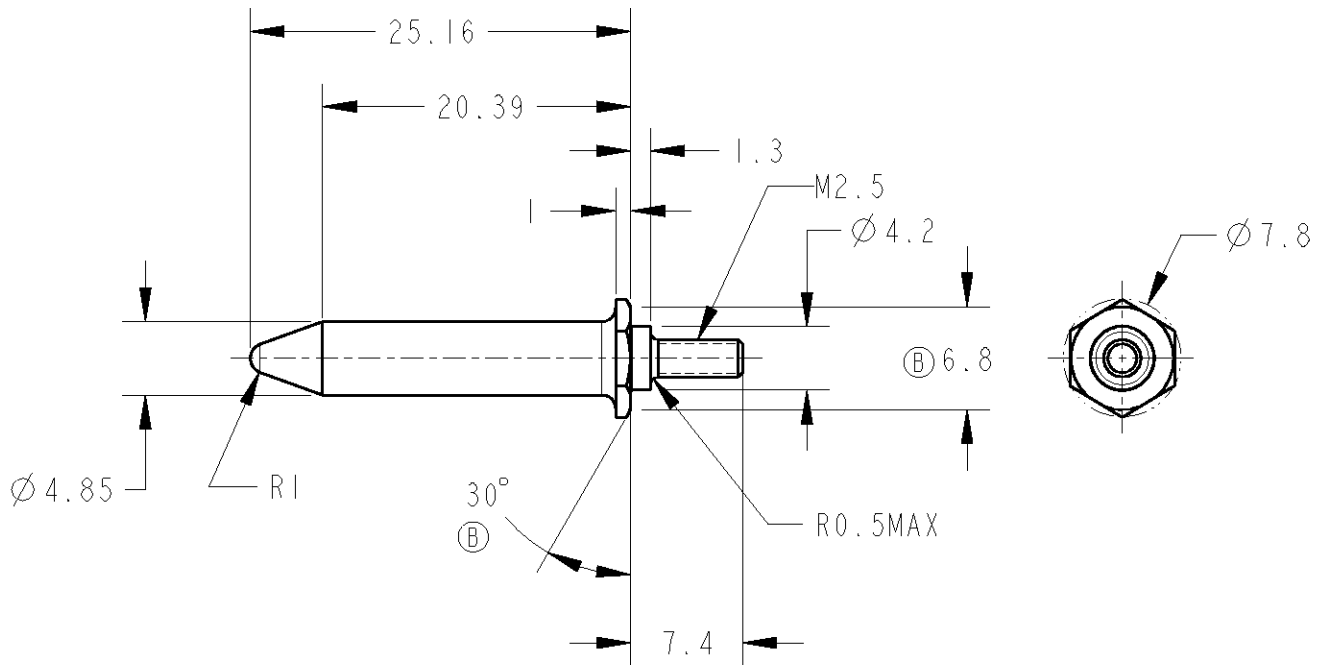
Tel: +86-755-8981 8866 Fax: +86-755-8427 6832

Email & Skype: info@chipsmall.com Web: www.chipsmall.com

Address: A1208, Overseas Decoration Building, #122 Zhenhua RD., Futian, Shenzhen, China



LOC	DIST	REVISIONS 変更					
		P	LTR	DESCRIPTION	DATE	DWN	APVD
J	-	B		REDRAWN, REVISED FJB0-0208-03	19MAR2003	C.O	I.E



△仕上げ; 全面無電解めっき  
銅下地めっき1μm最小の上に、ニッケルめっき2μm最小

△FINISH; WHOLE SURFACE ELECTROLESS PLATING  
0.001mm MIN THK. Cu UNDER PLATING  
0.002mm MIN THK. Ni SURFACE PLATING

2003MAR11

RELEASED FOR PUBLICATION

THIS DRAWING IS UNPUBLISHED.

© COPYRIGHT 2003 BY TYCO ELECTRONICS CORPORATION. ALL RIGHTS RESERVED.

DIMENSIONS: 単位: 耗 mm	DWN C. OHASHI	19MAR2003	MATERIAL 材料	STEEL	FINISH 仕上	SEE NOTE 1
	CHK K. IKEGAMI	19MAR2003	Tyco Electronics AMP K.K. Kawasaki, Japan			
TOLERANCES UNLESS OTHERWISE SPECIFIED:	APVD I. ENOMOTO	19MAR2003				
一般公差	PRODUCT SPEC 製品規格		GUIDE PIN FOR HS3 (SHORT)			
0 PLC ±-	APPLICATION SPEC 取付適用規格		SIZE	CAGE CODE	DRAWING NO 番号	RESTRICTED TO
1 PLC ±0.3	WEIGHT -		A4	00779	C=1318744	-
2 PLC ±0.2			CUSTOMER DRAWING			
3 PLC ±					SHEET 1 OF 1	REV B
4 PLC ±						
ANGLES ±-						