



Chipsmall Limited consists of a professional team with an average of over 10 year of expertise in the distribution of electronic components. Based in Hongkong, we have already established firm and mutual-benefit business relationships with customers from,Europe,America and south Asia,supplying obsolete and hard-to-find components to meet their specific needs.

With the principle of “Quality Parts,Customers Priority,Honest Operation,and Considerate Service”,our business mainly focus on the distribution of electronic components. Line cards we deal with include Microchip,ALPS,ROHM,Xilinx,Pulse,ON,Everlight and Freescale. Main products comprise IC,Modules,Potentiometer,IC Socket,Relay,Connector.Our parts cover such applications as commercial,industrial, and automotives areas.

We are looking forward to setting up business relationship with you and hope to provide you with the best service and solution. Let us make a better world for our industry!



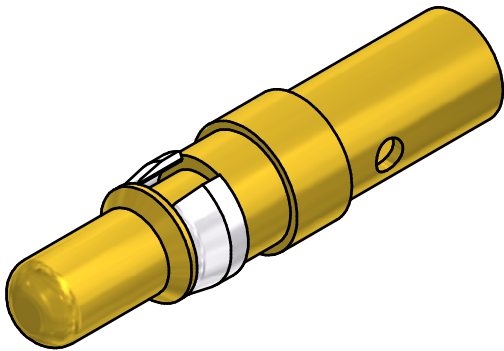
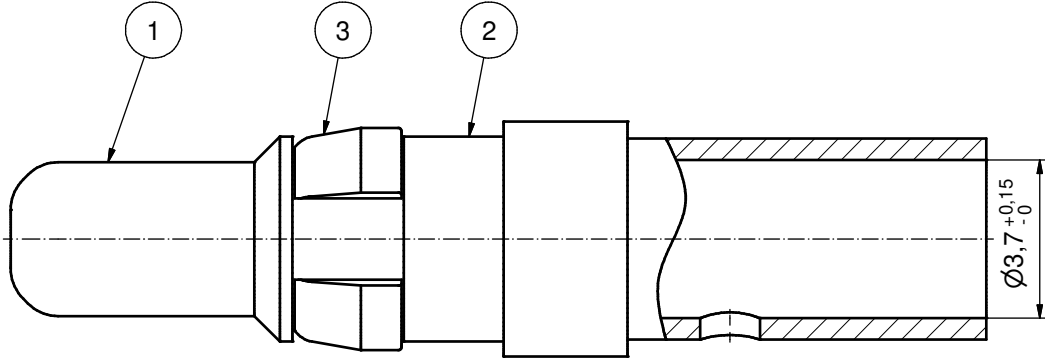
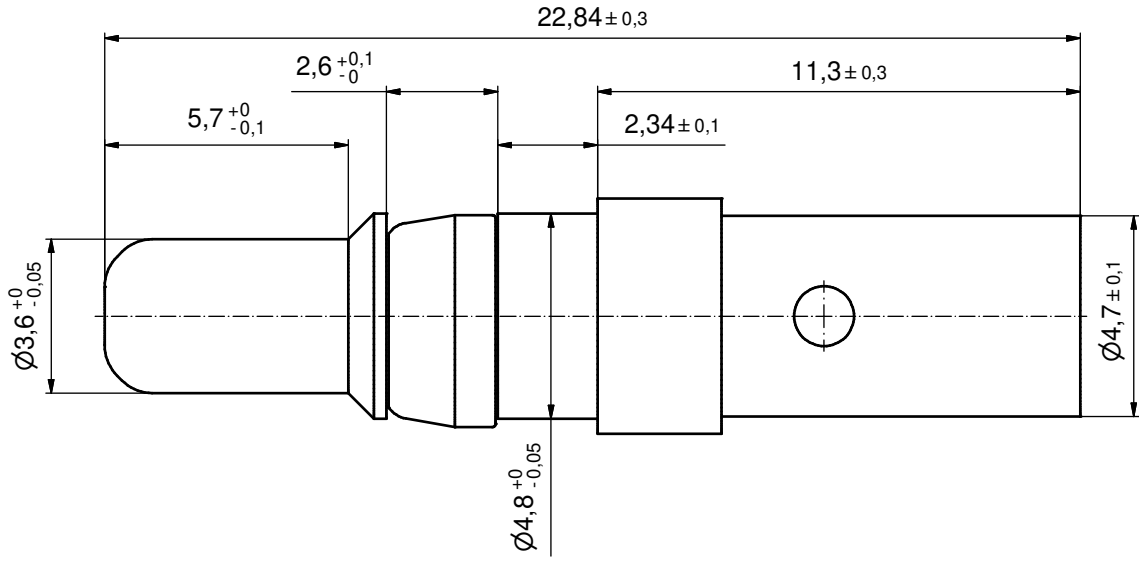
Contact us

Tel: +86-755-8981 8866 Fax: +86-755-8427 6832

Email & Skype: info@chipsmall.com Web: www.chipsmall.com

Address: A1208, Overseas Decoration Building, #122 Zhenhua RD., Futian, Shenzhen, China



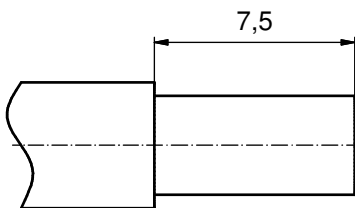


NOTES:

CRIMPING:
 USE CRIMP TOOL: 360X10409X
 WITH TOOL INSERT: 360X20029X
 SELECTOR SETTINGS: 7 FOR AWG 10
 6 FOR AWG 12

plating	part no.
GOLD FLASH over NICKEL	131A11039X
30µin HARD GOLD over min. 50µin NICKEL	131C11039X
50µin HARD GOLD over min. 50µin NICKEL	131J11039X

STRIPPING DIMENSIONS



Directive 2002/95/EC RoHS compliant

pos	qty	description	material	plating
3	1	RETAINING RING	COPPER ALLOY	NICKEL PLATED
2	1	REAR SIDE	COPPER ALLOY	GOLD FLASH over NICKEL
1	1	MATING SIDE	COPPER ALLOY	see table

partlist					tolerance	dim. in mm	scale:	8:1	
THIS DRAWING MAY NOT BE COPIED OR REPRODUCED IN ANY WAY, AND MAY NOT BE PASSED ON TO A THIRD PARTY WITHOUT WRITTEN PERMISSION. OWNERSHIP AND COPYRIGHT OF CONEC GmbH DO NOT ALTER CAD DRAWING BY HAND					date	name	material: see partlist		
					drawn	12.07.12	Schmidt	title: HIGH POWER CONTACT MALE	
					appd.	12.07.12	Koch	CRIMP VERSION 30A FOR AWG 10-12	
					norm			D-SUB COMBINATION	
d-old	13K11D3A / 13K21D3A		dwg no:		DIN-A3				
1 x b	A4380	12.07.12	HS		sh: 1				
a	Original								
rev.	description	date	name			part no:	see table		