



Chipsmall Limited consists of a professional team with an average of over 10 year of expertise in the distribution of electronic components. Based in Hongkong, we have already established firm and mutual-benefit business relationships with customers from,Europe,America and south Asia,supplying obsolete and hard-to-find components to meet their specific needs.

With the principle of "Quality Parts,Customers Priority,Honest Operation,and Considerate Service",our business mainly focus on the distribution of electronic components. Line cards we deal with include Microchip,ALPS,ROHM,Xilinx,Pulse,ON,Everlight and Freescale. Main products comprise IC,Modules,Potentiometer,IC Socket,Relay,Connector.Our parts cover such applications as commercial,industrial, and automotives areas.

We are looking forward to setting up business relationship with you and hope to provide you with the best service and solution. Let us make a better world for our industry!



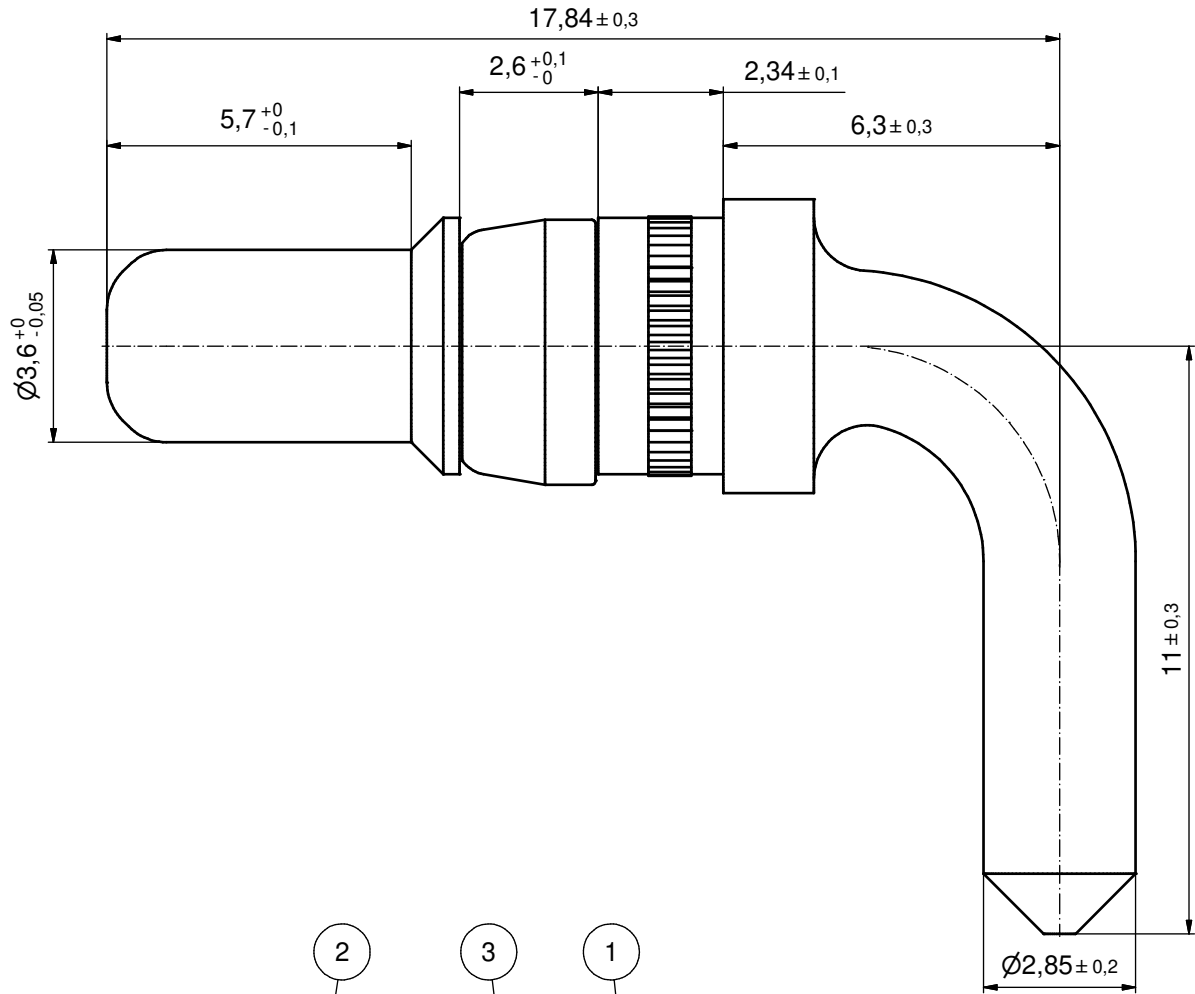
## Contact us

Tel: +86-755-8981 8866 Fax: +86-755-8427 6832

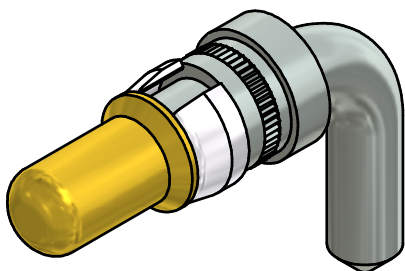
Email & Skype: info@chipsmall.com Web: www.chipsmall.com

Address: A1208, Overseas Decoration Building, #122 Zhenhua RD., Futian, Shenzhen, China





plating	part no.
GOLD FLASH over NICKEL	<b>131A13019X</b>
min. 20µin HARD GOLD over min. 50µin NICKEL	<b>131B13019X</b>
min. 30µin HARD GOLD over min. 50µin NICKEL	<b>131C13019X</b>



Directive 2002/95/EC RoHS compliant

pos	qty	description	material	plating
3	1	RETAINING RING	COPPER ALLOY	NICKEL PLATED
2	1	MATING SIDE	COPPER ALLOY	see table
1	1	REAR SIDE	COPPER ALLOY	TIN PLATED

partlist					tolerance	dim. in mm	scale:	10:1	
THIS DRAWING MAY NOT BE COPIED OR REPRODUCED IN ANY WAY, AND MAY NOT BE PASSED ON TO A THIRD PARTY WITHOUT WRITTEN PERMISSION. OWNERSHIP AND COPYRIGHT OF CONEC GmbH DO NOT ALTER CAD DRAWING BY HAND					date	name	material: see partlist		
					drawn	23.03.98	Barcinski	title: HIGH POWER CONTACT MALE	
					appd.	23.03.98	Mickenbecker	SOLDER PIN 90°, d=2,85mm, 20A	
					norm			D-SUB COMBINATION	
d-old	SK21H04 / 13K2IE0A		dwg no:		DIN-A3				
1 x b	A4364	05.07.12	HS		sh: 1				
a	Original								
rev.	description	date	name			part no:	see table		