



Chipsmall Limited consists of a professional team with an average of over 10 year of expertise in the distribution of electronic components. Based in Hongkong, we have already established firm and mutual-benefit business relationships with customers from,Europe,America and south Asia,supplying obsolete and hard-to-find components to meet their specific needs.

With the principle of “Quality Parts,Customers Priority,Honest Operation,and Considerate Service”,our business mainly focus on the distribution of electronic components. Line cards we deal with include Microchip,ALPS,ROHM,Xilinx,Pulse,ON,Everlight and Freescale. Main products comprise IC,Modules,Potentiometer,IC Socket,Relay,Connector.Our parts cover such applications as commercial,industrial, and automotives areas.

We are looking forward to setting up business relationship with you and hope to provide you with the best service and solution. Let us make a better world for our industry!



Contact us

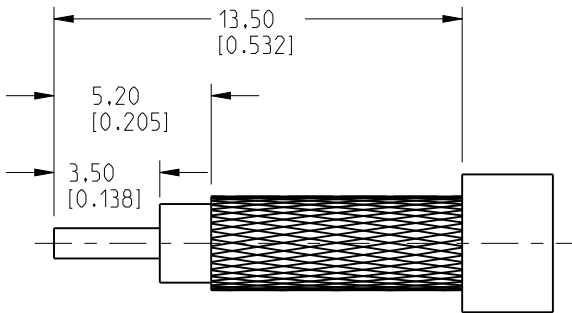
Tel: +86-755-8981 8866 Fax: +86-755-8427 6832

Email & Skype: info@chipsmall.com Web: www.chipsmall.com

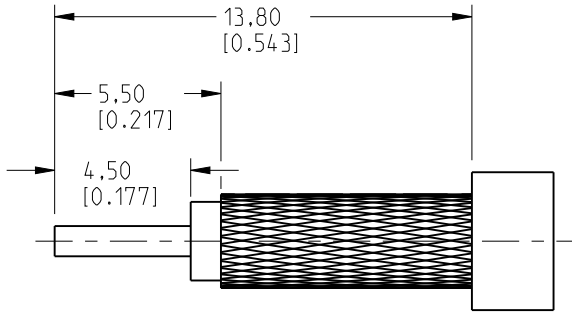
Address: A1208, Overseas Decoration Building, #122 Zhenhua RD., Futian, Shenzhen, China



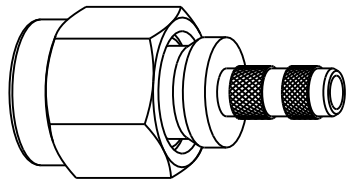
- NOTES:
1. IMPEDANCE: 50 OHM
 2. FREQUENCY RANGE: DC-12.4 GHZ
 3. ELECTRICAL PERFORMANCE MAY VARY DEPENDING ON THE TYPE OF CABLE BEING USED
 4. DIELECTRIC WITHSTANDING VOLTAGE: 1000 VRMS, MIN.
 5. DURABILITY: 500 CYCLES MIN.
 6. TEMPERATURE RANGE: -65°C TO +165°C
 7. CRIMPED FERRULE HEX CRIMP SIZE 0.213".
 8. CONTACT PIN TO SOLDER.
 9. WHEN USING WITH RG-58 CABLE,DISCARD THE PTFE SPACER AND USE STRIPPING DIMENSIONS "A".
 10. WHEN USING WITH LMR-195 CABLE,ADD THE PTFE SPACER AND USE STRIPPING DIMENSIONS "B".



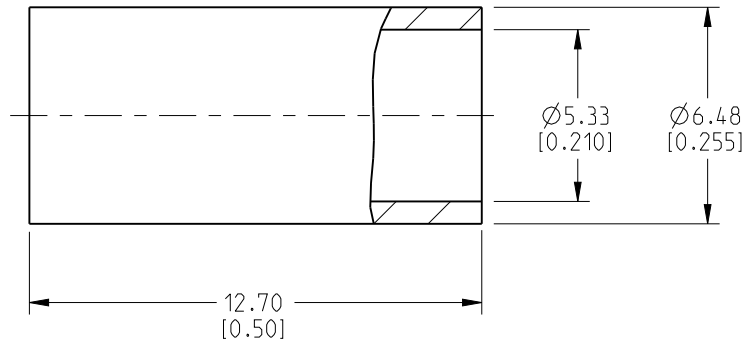
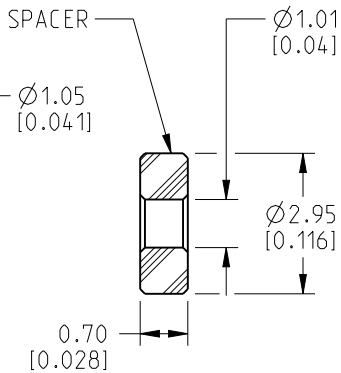
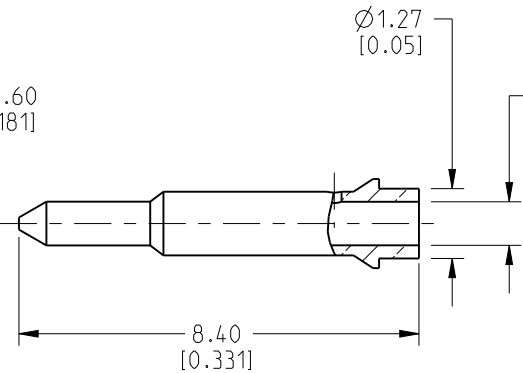
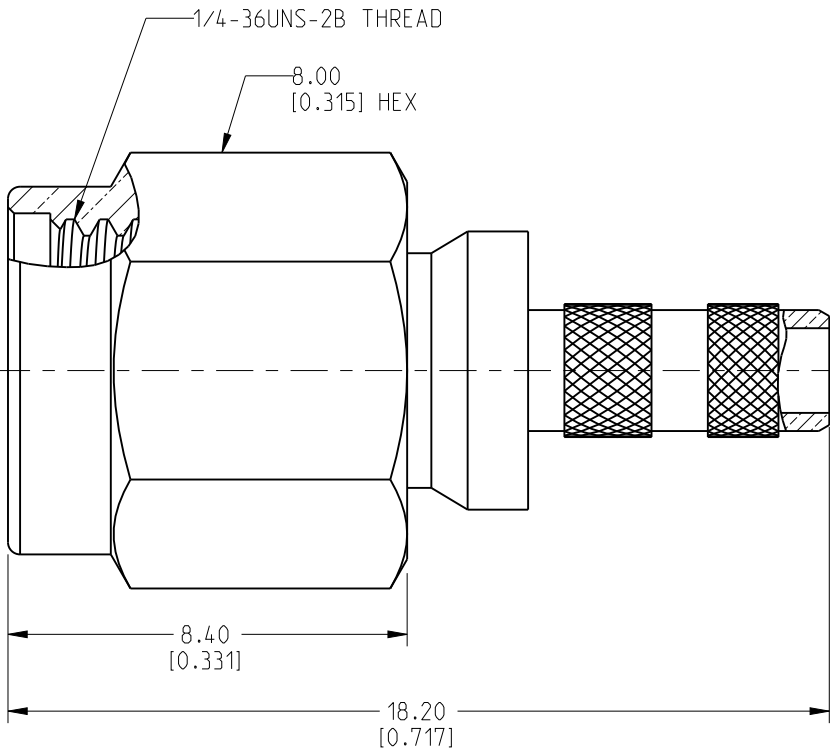
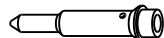
RECOMMENDED CABLE STRIPPING DIMENSIONS "A"



RECOMMENDED CABLE STRIPPING DIMENSIONS "B"



SCALE 2.500



8	SPACER	PTFE	NATURAL
7	FERRULE	COPPER	GOLD
6	RETAINER RING	SUS 304	NATURAL
5	GASKET	SILICONE RUBBER	RED
4	SHELL	BRASS	GOLD
3	CONTACT PIN	BRASS	GOLD
2	INSULATOR	PTFE	NATURAL
1	BODY	BRASS	GOLD
S.NO	DESCRIPTION	MATERIAL	FINISH

UNLESS OTHERWISE SPECIFIED, DIMENSIONS ARE IN INCHES AND TOLERANCES ARE: 2 PLACE DECIMAL 3 PLACE DECIMAL ±.015 (0,381 mm) ±.005 (0,127 mm) ANGLES ± 1°	MATERIAL	DRAWN HARI R	DATE 03-Jan-13	TITLE SMA STRAIGHT PLUG FOR RG-58C/U, 58/U, LMR-195 CABLE	Amphenol Connex		
		ENGINEER HARI R	DATE 03-Jan-13				
		APPROVED	DATE				
	REFERENCE TASK # 717	CAD FILE	DWG SIZE B	DRAWING NO. 132113	REV C	SCALE: 6.3:1	SHEET 1 OF 1