



Chipsmall Limited consists of a professional team with an average of over 10 year of expertise in the distribution of electronic components. Based in Hongkong, we have already established firm and mutual-benefit business relationships with customers from,Europe,America and south Asia,supplying obsolete and hard-to-find components to meet their specific needs.

With the principle of “Quality Parts,Customers Priority,Honest Operation,and Considerate Service”,our business mainly focus on the distribution of electronic components. Line cards we deal with include Microchip,ALPS,ROHM,Xilinx,Pulse,ON,Everlight and Freescale. Main products comprise IC,Modules,Potentiometer,IC Socket,Relay,Connector.Our parts cover such applications as commercial,industrial, and automotives areas.

We are looking forward to setting up business relationship with you and hope to provide you with the best service and solution. Let us make a better world for our industry!



Contact us

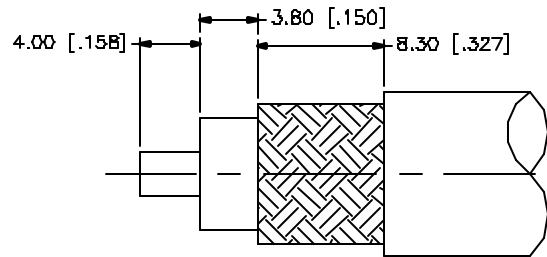
Tel: +86-755-8981 8866 Fax: +86-755-8427 6832

Email & Skype: info@chipsmall.com Web: www.chipsmall.com

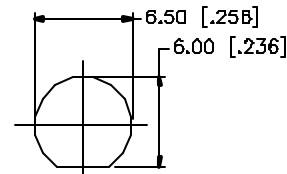
Address: A1208, Overseas Decoration Building, #122 Zhenhua RD., Futian, Shenzhen, China



REV.	DATE	DESCRIPTION
NC	07/18/01	INITIAL RELEASE
A	05/17/05	UPDATE DRAWING FORMAT

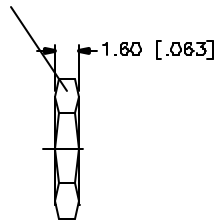


RECOMMENDED
CABLE STRIPPING DIM'S

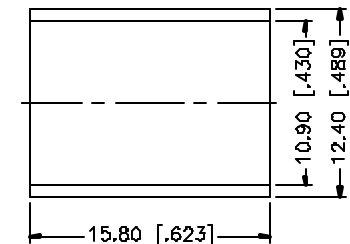
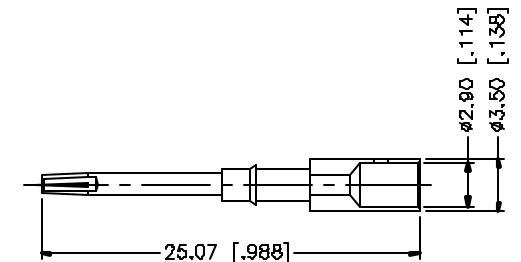
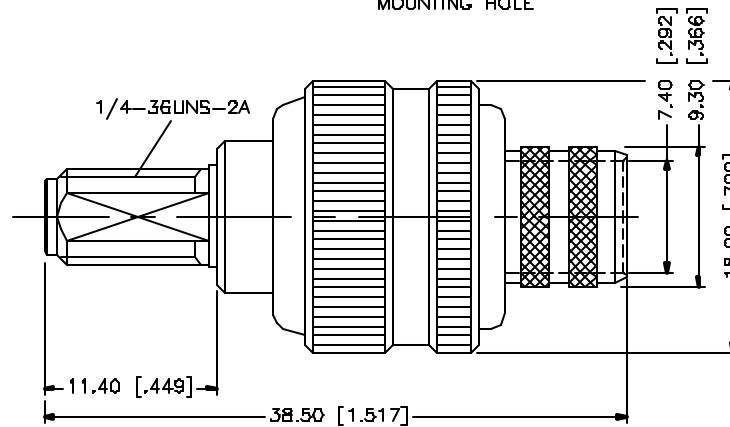
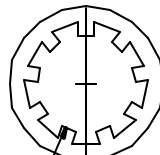


RECOMMENDED
MOUNTING HOLE

8 HEX NUT



ø6.50 [ø.256]
ø10.20 [ø.402]



CRIMP NOTES:

1. CRIMPED FERRULE
HEX CRIMP SIZE .429"
2. CRIMPED CONTACT PIN
HEX CRIMP SIZE .118"
3. MAX. PANEL THICKNESS = 3.2mm

					UNLESS OTHERWISE SPECIFIED DIMENSIONS ARE IN MILLIMETERS. DIMENSIONS IN [] ARE IN INCHES AND FOR CUSTOMER REFERENCE ONLY. UNLESS OTHERWISE SPECIFIED TOLERANCES FOR MILLIMETERS ARE: 0.5 - 8mm ± 0.20mm 8 - 30mm ± 0.40mm 30 - 120mm ± 0.50mm UNLESS OTHERWISE SPECIFIED TOLERANCES FOR INCHES ARE: .020 - .315 = ± 0.007" .315 - 1.180 = ± 0.015" 1.180 - 4.724 = ± 0.020"	APPROVALS		DATE		Amphenol Connex			
8						DRAWN	G.R.S.	05/17/05					
7						CHECKED			PART DESCRIPTION SMA BULKHEAD CRIMP JACK (FOR BELDEN 9913, 9914, LMR-400)				
6	FERRULE	COPPER	GOLD	1		ISSUED							PART NO. 132333
5	HEX NUT	BRASS	GOLD	1		SHEET	1 OF 1		DWG. NO. 132333.DWG REV. A SIZE A SCALE NA				
4	LOCK WASHER	BRASS	GOLD	1		CAD FILE C:/132/132333.DWG							
3	CONTACT PIN	BRASS	GOLD	1		DO NOT SCALE DRAWING							
2	INSULATOR	TEFLON	NATURAL	1									
1	BODY	BRASS	GOLD	1									
	DESCRIPTION	MATERIAL	FINISH	QTY									