



Chipsmall Limited consists of a professional team with an average of over 10 year of expertise in the distribution of electronic components. Based in Hongkong, we have already established firm and mutual-benefit business relationships with customers from,Europe,America and south Asia,supplying obsolete and hard-to-find components to meet their specific needs.

With the principle of “Quality Parts,Customers Priority,Honest Operation,and Considerate Service”,our business mainly focus on the distribution of electronic components. Line cards we deal with include Microchip,ALPS,ROHM,Xilinx,Pulse,ON,Everlight and Freescale. Main products comprise IC,Modules,Potentiometer,IC Socket,Relay,Connector.Our parts cover such applications as commercial,industrial, and automotives areas.

We are looking forward to setting up business relationship with you and hope to provide you with the best service and solution. Let us make a better world for our industry!



Contact us

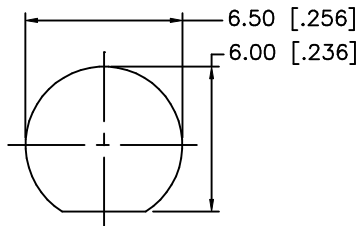
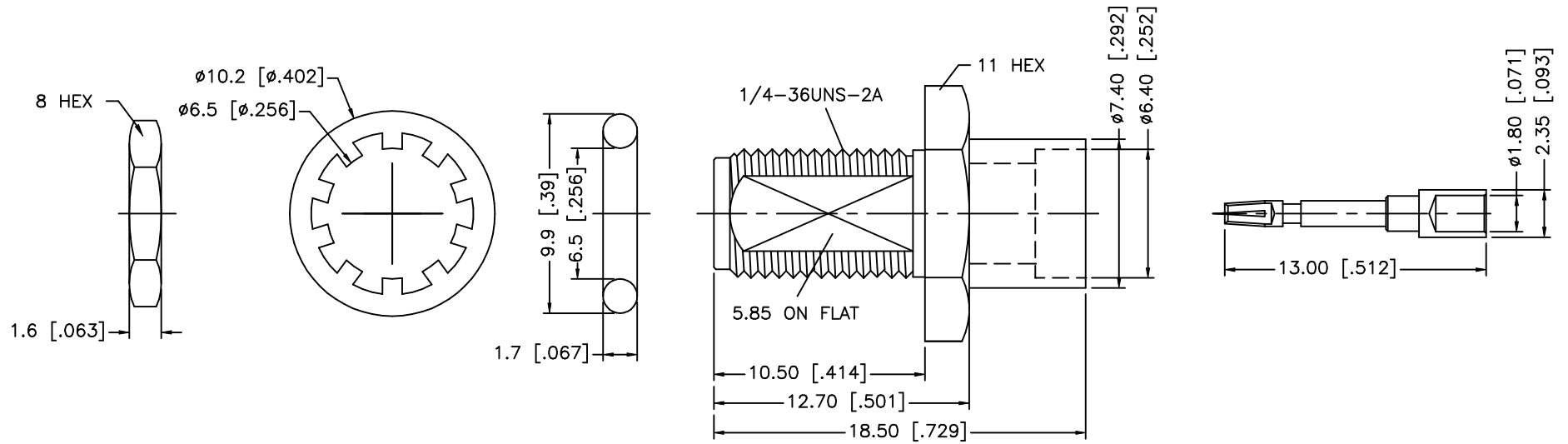
Tel: +86-755-8981 8866 Fax: +86-755-8427 6832

Email & Skype: info@chipsmall.com Web: www.chipsmall.com

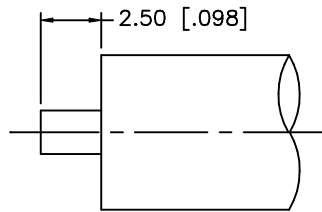
Address: A1208, Overseas Decoration Building, #122 Zhenhua RD., Futian, Shenzhen, China



REV.	DATE	DESCRIPTION
NC	06/12/02	INITIAL RELEASE



RECOMMENDED MOUNTING HOLE



RECOMMENDED CABLE STRIPPING DIM'S

CRIMP NOTES:

1. SOLDER CENTER CONTACT
2. MAX. PANEL THICKNESS = 2.4mm

8				UNLESS OTHERWISE SPECIFIED DIMENSIONS ARE IN MILLIMETERS	APPROVALS	DATE	<h1>Amphenol - Connex</h1> <h2>CONNECTOR CORPORATION</h2>					
7			DIMENSIONS IN [] ARE IN INCHES FOR CUSTOMER REFERENCE ONLY		DRAWN	G.R.S.					06/12/02	
6	HEX NUT	BRASS			GOLD	CHECKED						
5	LOCK WASHER	BRASS			GOLD	ISSUED						
4	GASKET	RUBBER	RED	UNLESS OTHERWISE SPECIFIED TOLERANCES FOR INCHES ARE: .XXX = ± 0.005" .XX = ± 0.010" .X = ± 0.020"	TITLE		SMA DIRECT SOLDER BULKHEAD JACK (.250 SEMI RIGID CABLE)					
3	CONTACT PIN	BER. COPPER	GOLD		SIZE	FSCM NO.	DWG. NO.	REV.				
2	INSULATOR	TEFLON	NATURAL		A	99001	132346.DWG	NC				
1	BODY	BRASS	GOLD		SCALE	PART NO.	SHEET					
DESCRIPTION MATERIAL FINISH				DO NOT SCALE DRAWING	NA	132346	1 OF 1					