



Chipsmall Limited consists of a professional team with an average of over 10 year of expertise in the distribution of electronic components. Based in Hongkong, we have already established firm and mutual-benefit business relationships with customers from,Europe,America and south Asia,supplying obsolete and hard-to-find components to meet their specific needs.

With the principle of "Quality Parts,Customers Priority,Honest Operation,and Considerate Service",our business mainly focus on the distribution of electronic components. Line cards we deal with include Microchip,ALPS,ROHM,Xilinx,Pulse,ON,Everlight and Freescale. Main products comprise IC,Modules,Potentiometer,IC Socket,Relay,Connector.Our parts cover such applications as commercial,industrial, and automotives areas.

We are looking forward to setting up business relationship with you and hope to provide you with the best service and solution. Let us make a better world for our industry!



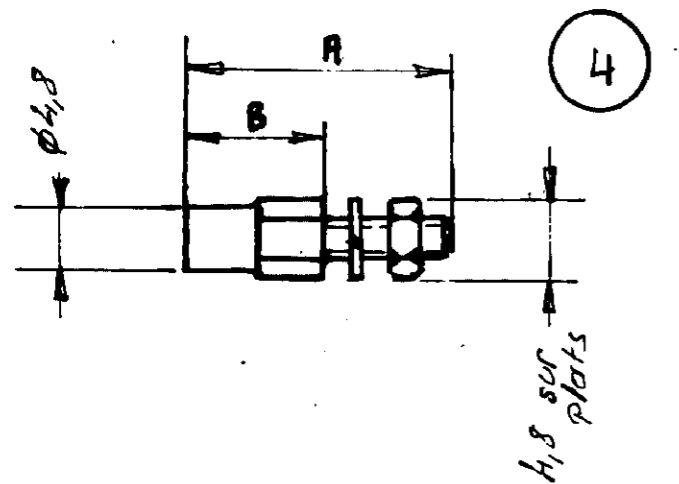
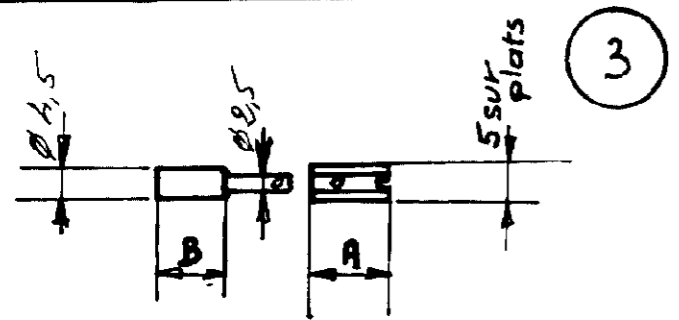
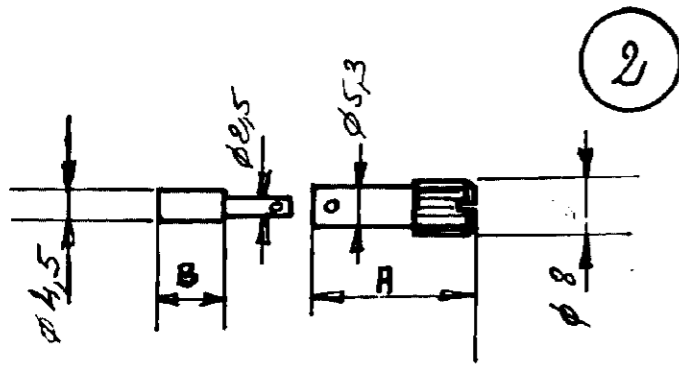
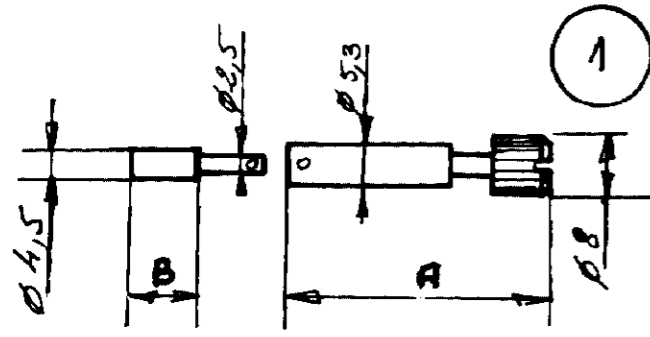
## Contact us

Tel: +86-755-8981 8866 Fax: +86-755-8427 6832

Email & Skype: info@chipsmall.com Web: www.chipsmall.com

Address: A1208, Overseas Decoration Building, #122 Zhenhua RD., Futian, Shenzhen, China





NOTE:

△ OBSOLETE PARTS: OBSOLETE CIS STREAMLINING PER D.RENAUD/D.SINISI

(B)		ALLIAGE CU NI	10,4	19,3	132366-2	VIS FIXE		4
		INOX	10,4	19,3	132366-1	VIS FIXE	INACTIF SAUF POUR MAINTENANCE	4
(B) △	△	OBSOLETE ALLIAGE CU NI	10,4	27,9	<del>132387-2</del>	VIS MOBILE COURTE A TETE MOLETEE		2
	△	OBSOLETE INOX	10,4	27,9	<del>132387-1</del>	VIS MOBILE COURTE A TETE MOLETEE	INACTIF SAUF POUR MAINTENANCE	2
(B)		ALLIAGE CU NI	10,4	14,3	132388-2	VIS MOBILE COURTE A TETE HEXAGONALE		3
		INOX	10,4	14,3	132388-1	VIS MOBILE COURTE A TETE HEXAGONALE	INACTIF SAUF POUR MAINTENANCE	3
(B)		ALLIAGE CU NI	10,4	13,2	132368-2	VIS MOBILE LONGUE A TETE MOLETEE		1
△	△	OBSOLETE INOX	10,4	13,2	<del>132368-1</del>	VIS MOBILE LONGUE A TETE MOLETEE	INACTIF SAUF POUR MAINTENANCE	1
		MATIERE	B	A	NUMERO	DESIGNATION	OBSERVATIONS	REP

IND	CHANGEMENT	DES	VER	DATE
B1	ECO-09-026346	KK	AEG	NOV09
B	REVISÉ	JM		5/10/05
A	AJOUTÉ DIAMÈTRE	JM		10/11/03

C 132368

QUANTITES PAR ENSEMBLE		© 19 BY AMP INCORPORATED. ALL RIGHTS RESERVED. AMP PRODUCTS COVERED BY PATENTS AND/OR PATENTS PENDING		DESSIN CLIENT UNIQUEMENT POUR REFERENCES	
DESSINE	JM 21 IV 76	MATERIE ET FINITION		AMP	
VERIFIE				AMP DE FRANCE 95 PONTOISE	
APPROUVE		DIMENS - FIL ISOLANT TYPE		CLASSE	
		TOLERANCES SAUF INDICATION ±0,3 ±1°		EHELLE	
		LOC		NO	
		F B		C 132368	
				REV B1	
VIS DE VERROUILLAGE "PRISE M"					