



Chipsmall Limited consists of a professional team with an average of over 10 year of expertise in the distribution of electronic components. Based in Hongkong, we have already established firm and mutual-benefit business relationships with customers from,Europe,America and south Asia,supplying obsolete and hard-to-find components to meet their specific needs.

With the principle of “Quality Parts,Customers Priority,Honest Operation,and Considerate Service”,our business mainly focus on the distribution of electronic components. Line cards we deal with include Microchip,ALPS,ROHM,Xilinx,Pulse,ON,Everlight and Freescale. Main products comprise IC,Modules,Potentiometer,IC Socket,Relay,Connector.Our parts cover such applications as commercial,industrial, and automotives areas.

We are looking forward to setting up business relationship with you and hope to provide you with the best service and solution. Let us make a better world for our industry!



Contact us

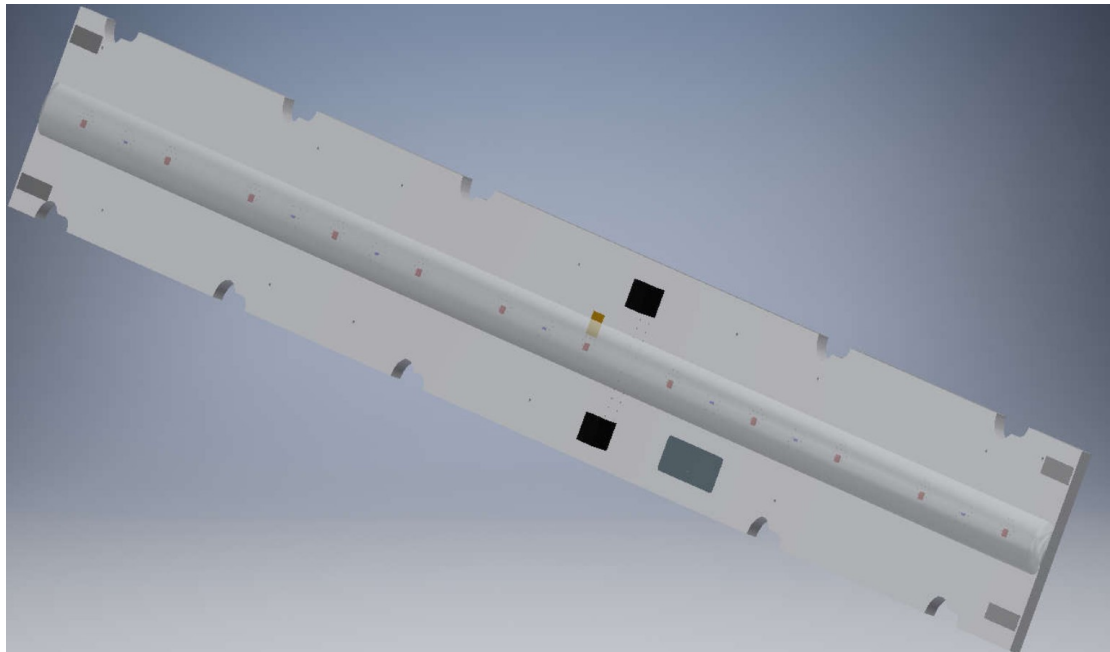
Tel: +86-755-8981 8866 Fax: +86-755-8427 6832

Email & Skype: info@chipsmall.com Web: www.chipsmall.com

Address: A1208, Overseas Decoration Building, #122 Zhenhua RD., Futian, Shenzhen, China



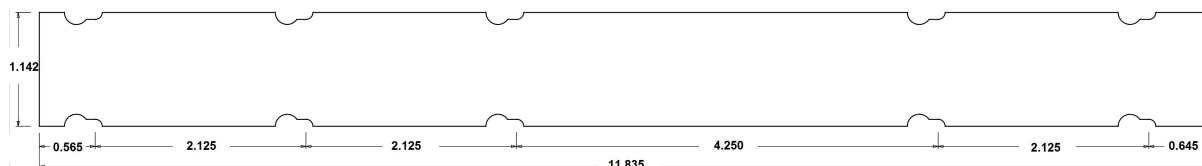
REV	DESCRIPTION	BY	DATE	APPROVED
00	INITIAL RELEASE	JPK	10/09/2017	DRE



PRODUCT INFORMATION

P/N	DESCRIPTION
132541	PCBA TRP Grow Light

MECHANICAL SPECIFICATIONS



**DIMENSIONS SHOWN FOR REFERENCE ONLY*


LIGHT SOURCE: 12 RED LEDS (660 nm), 7 BLUE LEDS (460nm)
 OPERATING TEMPERATURE: -10 - 50°C (14 - 122°F)

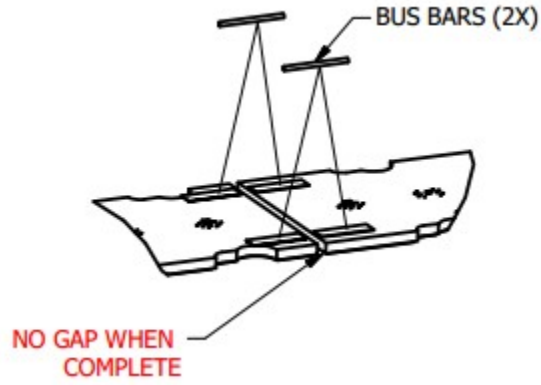
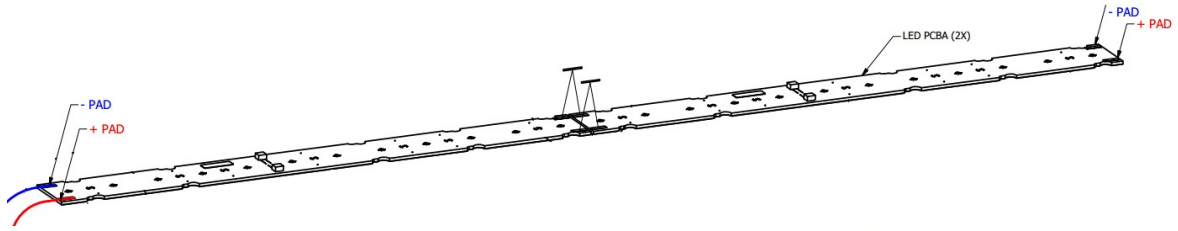
ELECTRICAL SPECIFICATIONS

INPUT POWER: 28 VDC*

INPUT CURRENT: 1.250A*

*TWO UNITS USED WITH THOMAS RESEARCH PRODUCTS LED-50W-036-C1400 DRIVER

	1215 BOWES RD ELGIN, IL 60123	CREATED BY: JPK	SAP #: 132541
		CREATED DATE: 10/09/2017	PAGE: 1 OF 3
TITLE: PRODUCT SPECIFICATION – PCBA TRP Grow Light		CHECKED BY: MGM	DRAWING NO.
		APPROVED BY: DRE	N0900-0234
			REV. 00



Thomas Research Products

1215 BOWES RD
ELGIN, IL 60123

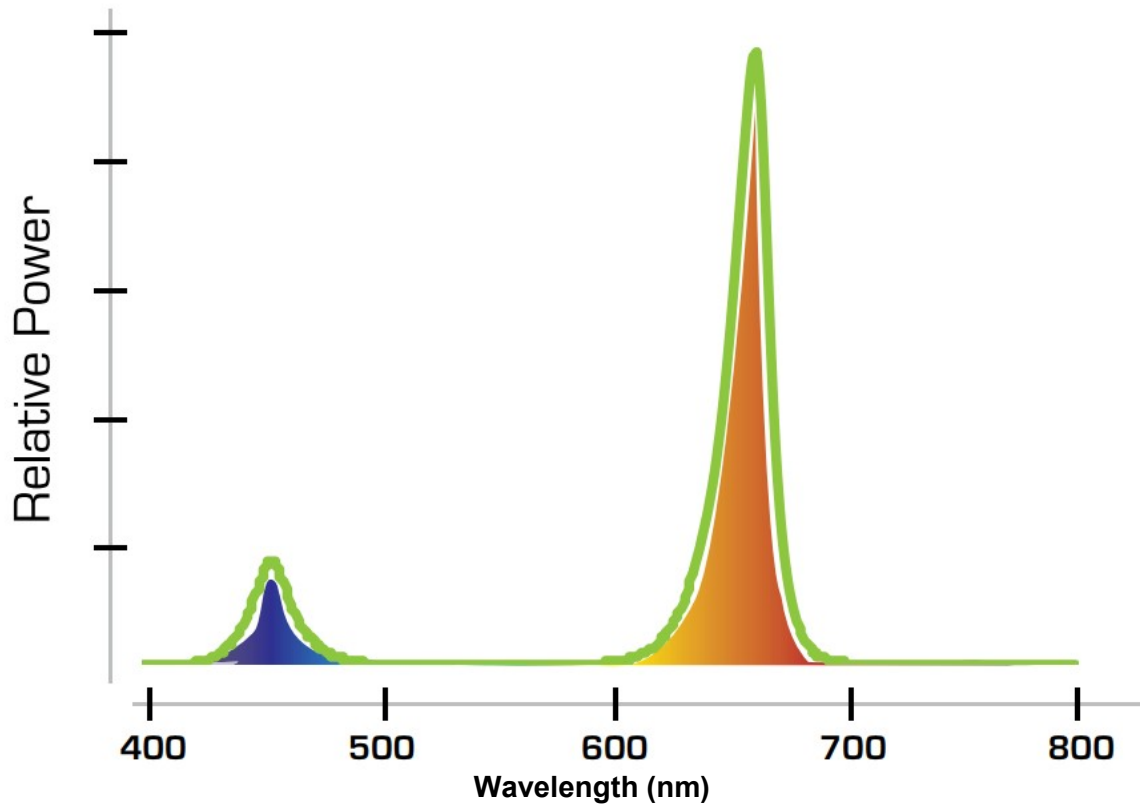
CREATED BY:	JPK	SAP #:	132541
CREATED DATE:	10/09/2017	PAGE:	2 OF 3
CHECKED BY:	MGM	DRAWING NO.	N0900-0234
APPROVED BY:	DRE	REV.	

TITLE:
PRODUCT SPECIFICATION – PCBA TRP Grow Light

OPTICAL SPECIFICATIONS

OUTPUT: 52 u/MOL/S OUTPUT FOR TWO UNITS
WAVELENGTH: RED: 660nm
 BLUE: 460nm
LED LIFE EXPECTANCY: 50,000 HOURS LIFE @ 25°C

SPECTRAL DISTRIBUTION



Thomas Research Products	1215 BOWES RD ELGIN, IL 60123	CREATED BY: JPK	SAP #: 132541	
		CREATED DATE: 10/09/2017	PAGE: 3 OF 3	
TITLE: PRODUCT SPECIFICATION – PCBA TRP Grow Light		CHECKED BY: MGM	DRAWING NO.	REV.
		APPROVED BY: DRE	N0900-0234	00