



Chipsmall Limited consists of a professional team with an average of over 10 year of expertise in the distribution of electronic components. Based in Hongkong, we have already established firm and mutual-benefit business relationships with customers from,Europe,America and south Asia,supplying obsolete and hard-to-find components to meet their specific needs.

With the principle of "Quality Parts,Customers Priority,Honest Operation,and Considerate Service",our business mainly focus on the distribution of electronic components. Line cards we deal with include Microchip,ALPS,ROHM,Xilinx,Pulse,ON,Everlight and Freescale. Main products comprise IC,Modules,Potentiometer,IC Socket,Relay,Connector.Our parts cover such applications as commercial,industrial, and automotives areas.

We are looking forward to setting up business relationship with you and hope to provide you with the best service and solution. Let us make a better world for our industry!



## Contact us

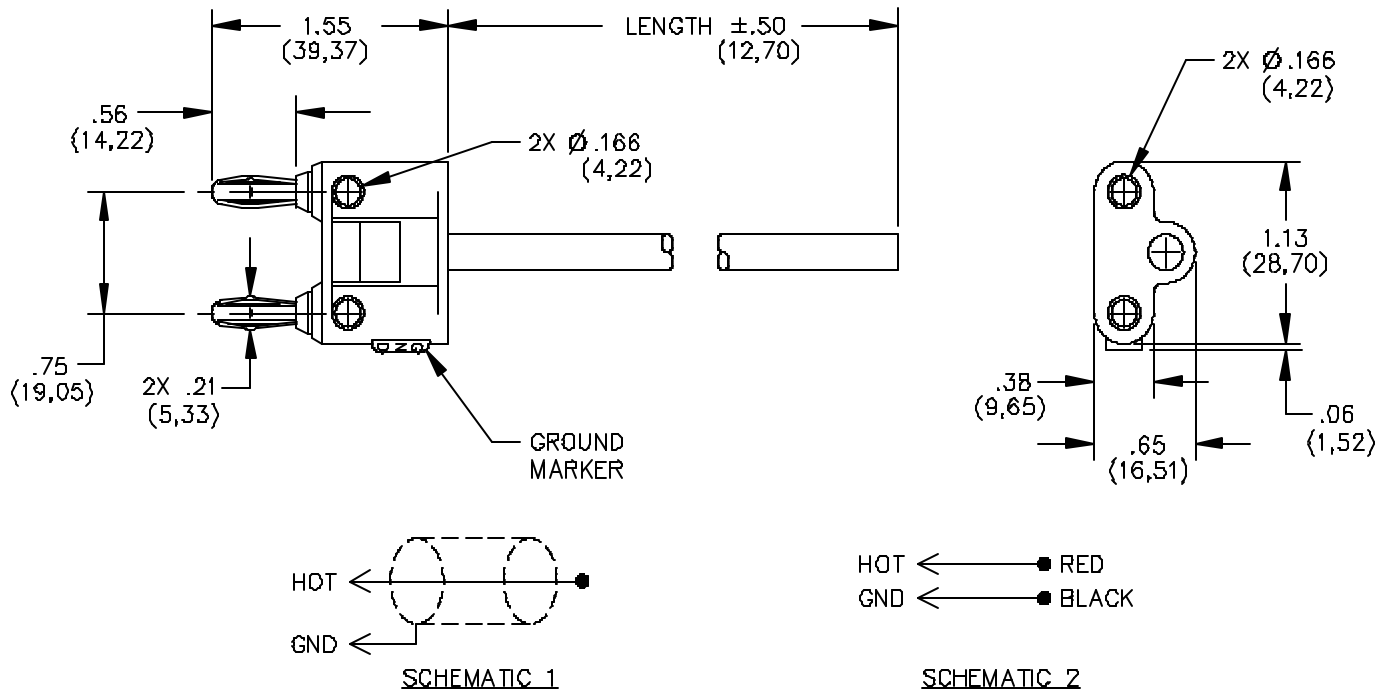
Tel: +86-755-8981 8866 Fax: +86-755-8427 6832

Email & Skype: info@chipsmall.com Web: www.chipsmall.com

Address: A1208, Overseas Decoration Building, #122 Zhenhua RD., Futian, Shenzhen, China



## Model 1326 Double Banana Plug One End Only



Part Number	Schematic	Cable Type	Diameter	Impedance	Length
1326-A-60	2	Twisted Pair	.250" (6,35 mm)	-	60" (152,4 cm)
1326-C-60	1	RG58C/U	.195" (4,95 mm)	50 Ohms	60" (152,4 cm)

### FEATURES:

- This double banana plug cable is designed to be used with all standard .166" (4mm) diameter banana jacks.
- These jacks are usually spaced at .75" (19mm) apart. Pomona's double banana plugs can be used with most digital multimeters that have the common and volt-ohm jacks at the standard spacing.
- This cable is also suited for use with power supplies that have binding post outputs
- The Pomona Banana Plug is well known for durability and reliability.
- We take considerable pride in the materials and workmanship that go into this plug.

- The one-piece Beryllium Copper leaf spring with hard nickel plating is swaged into the solid brass banana plug body.

### MATERIALS:

The plug is insert molded with black polypropylene (1326-C-).

The plug is insert molded with gray polypropylene (1326-A-).

### RATINGS:

Operating Temperature: +55° C (+131° F) Max.

1326-A 300VAC/424VDC

1326-C 500VRMS

### ORDERING INFORMATION: Model 1326

All dimensions are in inches. Tolerances (except noted): .xx = ±.02" (.51 mm), .xxx = ±.005" (.127 mm).

All specifications are to the latest revisions. Specifications are subject to change without notice.

Registered trademarks are the property of their respective companies. Made in USA