



Chipsmall Limited consists of a professional team with an average of over 10 year of expertise in the distribution of electronic components. Based in Hongkong, we have already established firm and mutual-benefit business relationships with customers from,Europe,America and south Asia,supplying obsolete and hard-to-find components to meet their specific needs.

With the principle of “Quality Parts,Customers Priority,Honest Operation,and Considerate Service”,our business mainly focus on the distribution of electronic components. Line cards we deal with include Microchip,ALPS,ROHM,Xilinx,Pulse,ON,Everlight and Freescale. Main products comprise IC,Modules,Potentiometer,IC Socket,Relay,Connector.Our parts cover such applications as commercial,industrial, and automotives areas.

We are looking forward to setting up business relationship with you and hope to provide you with the best service and solution. Let us make a better world for our industry!



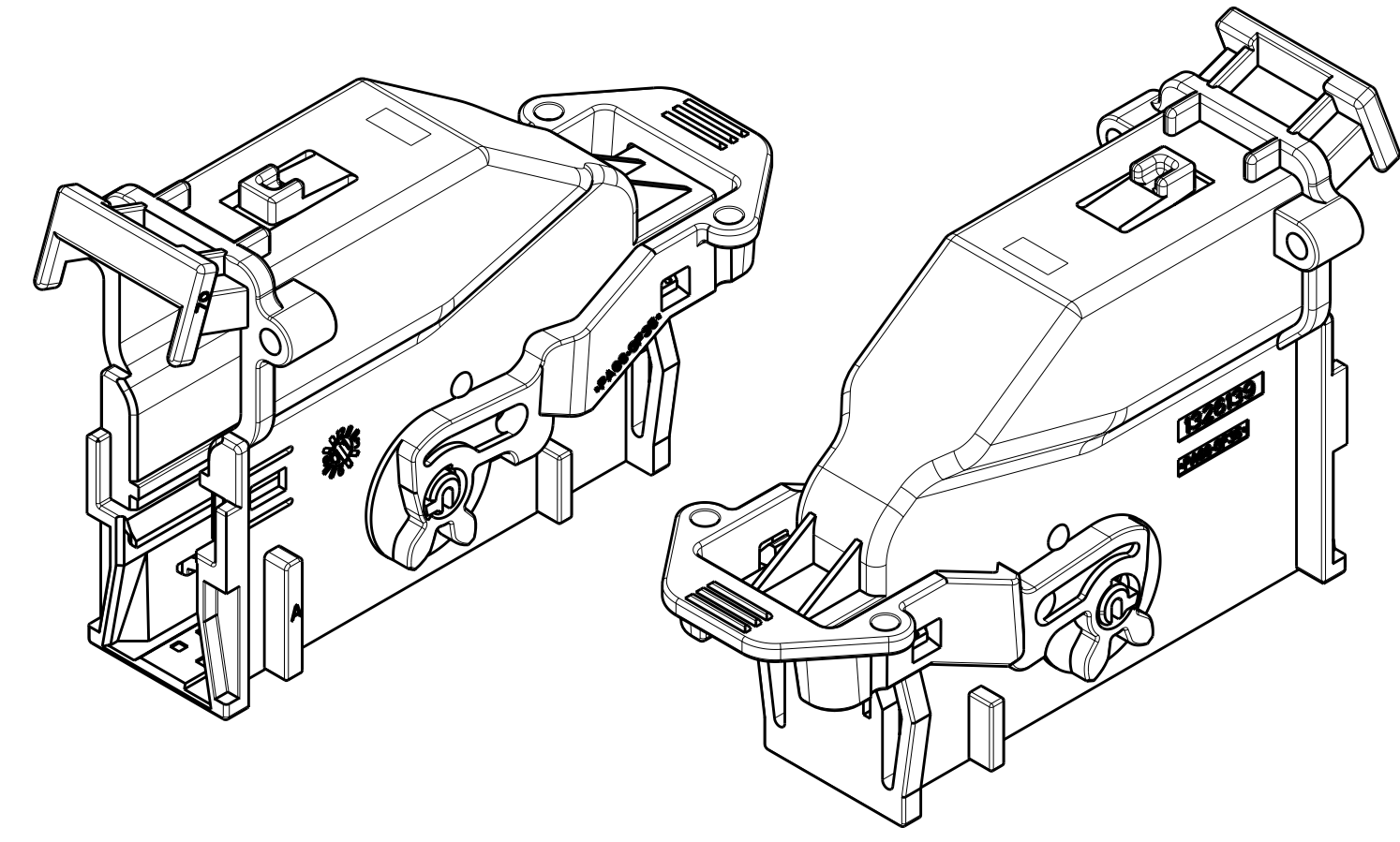
Contact us

Tel: +86-755-8981 8866 Fax: +86-755-8427 6832

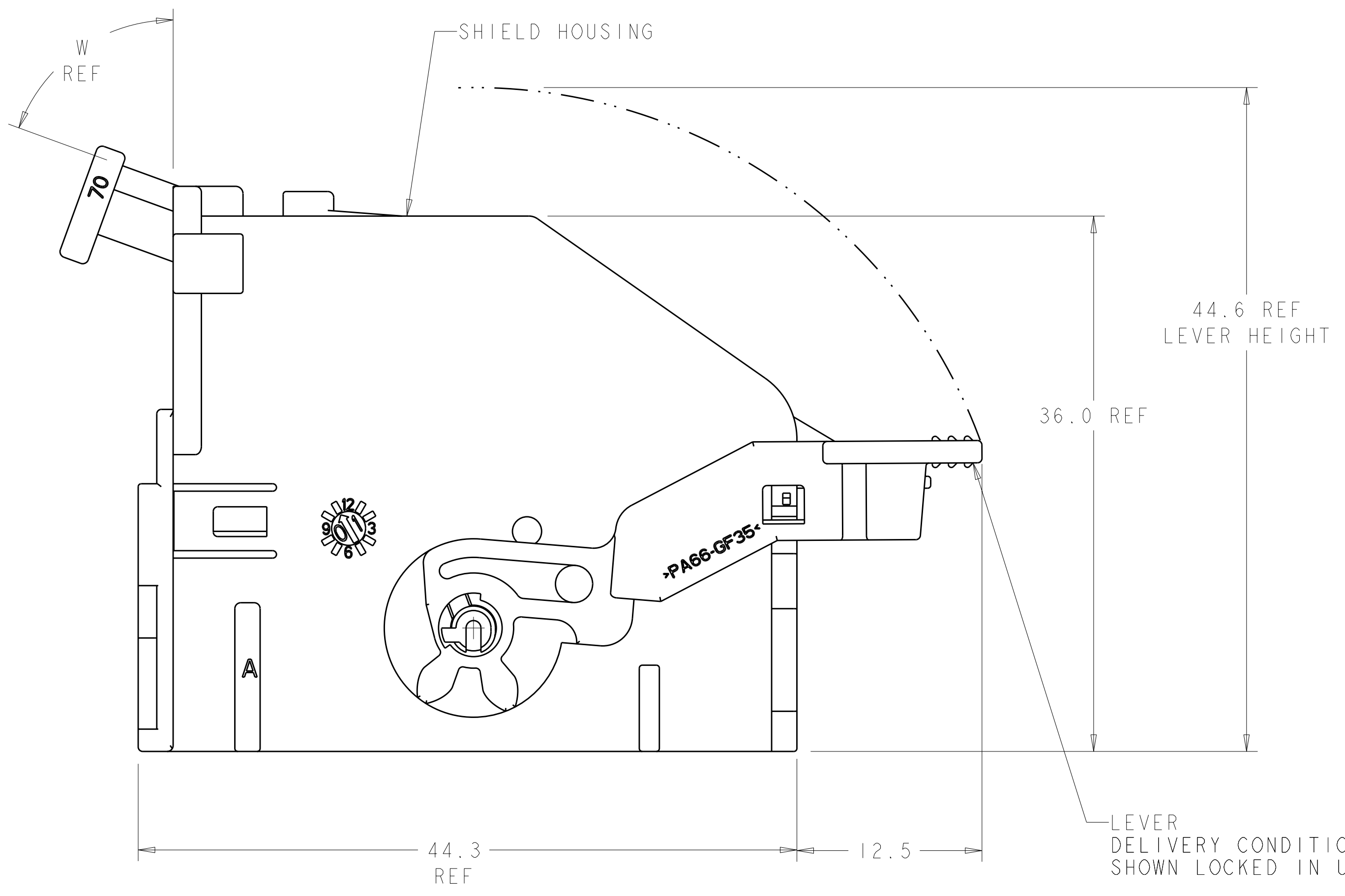
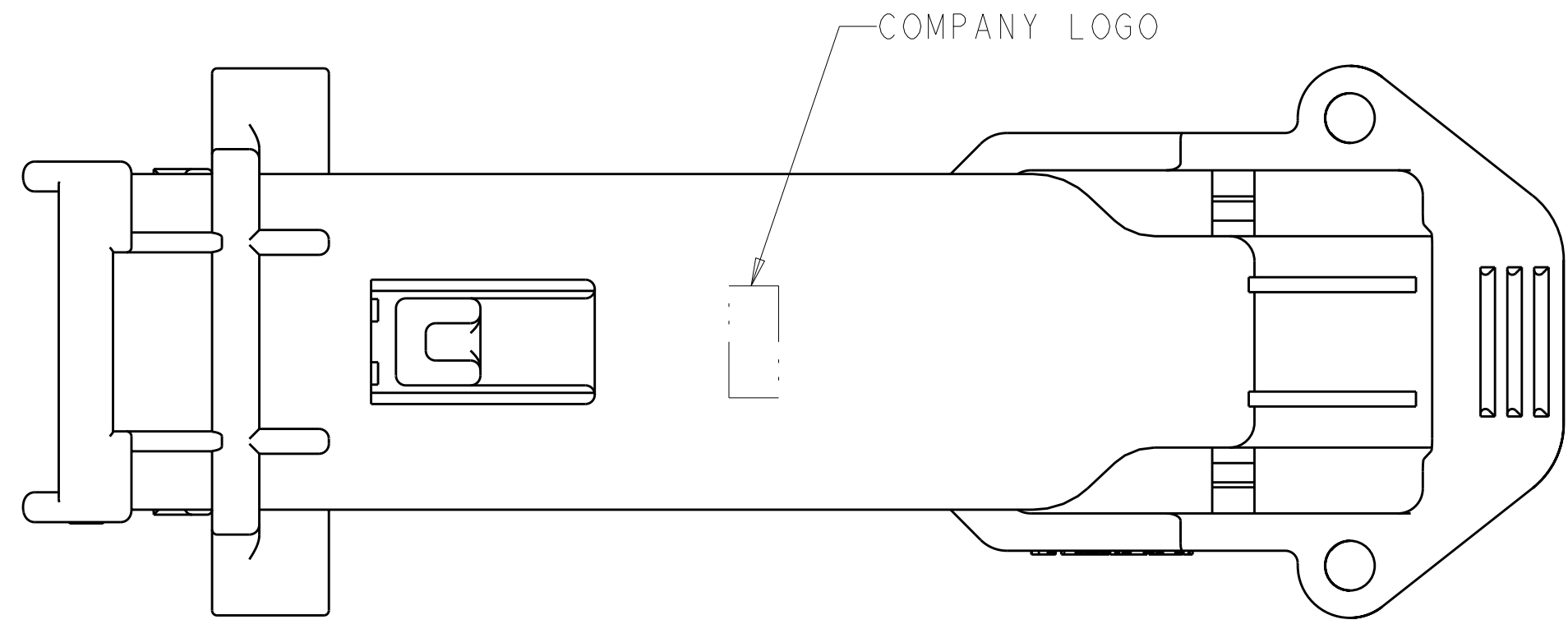
Email & Skype: info@chipsmall.com Web: www.chipsmall.com

Address: A1208, Overseas Decoration Building, #122 Zhenhua RD., Futian, Shenzhen, China



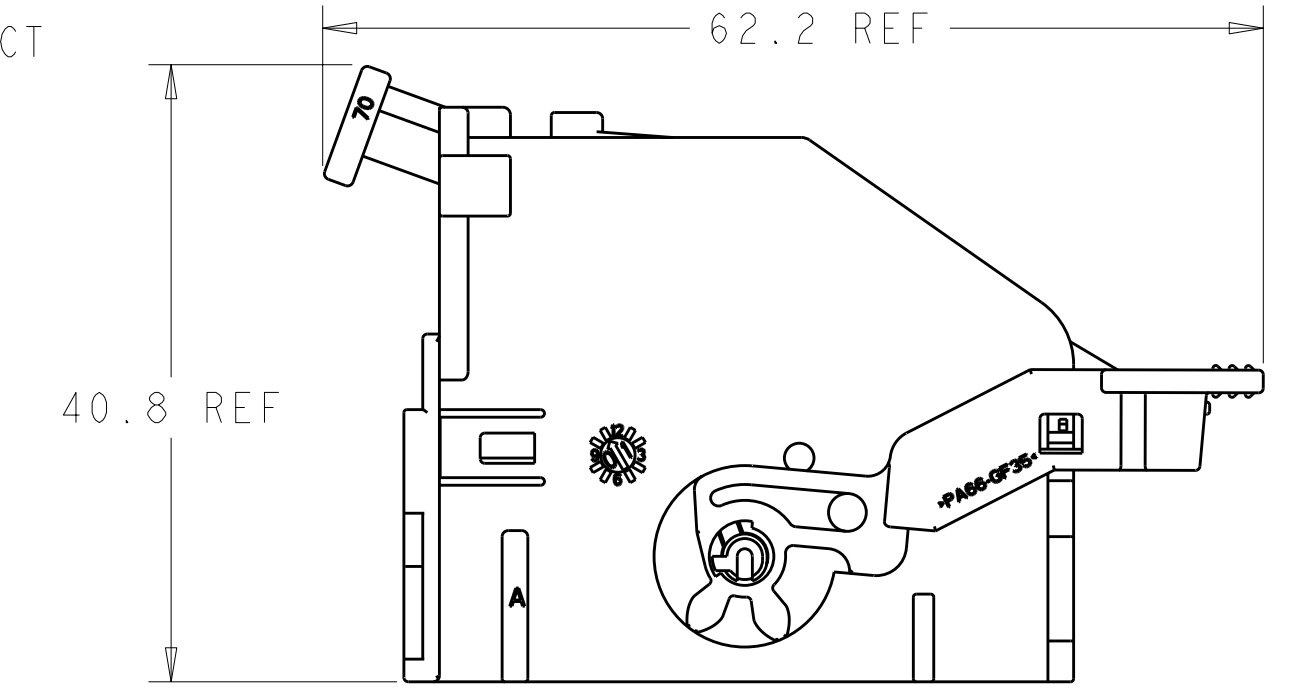


SCALE 2:1

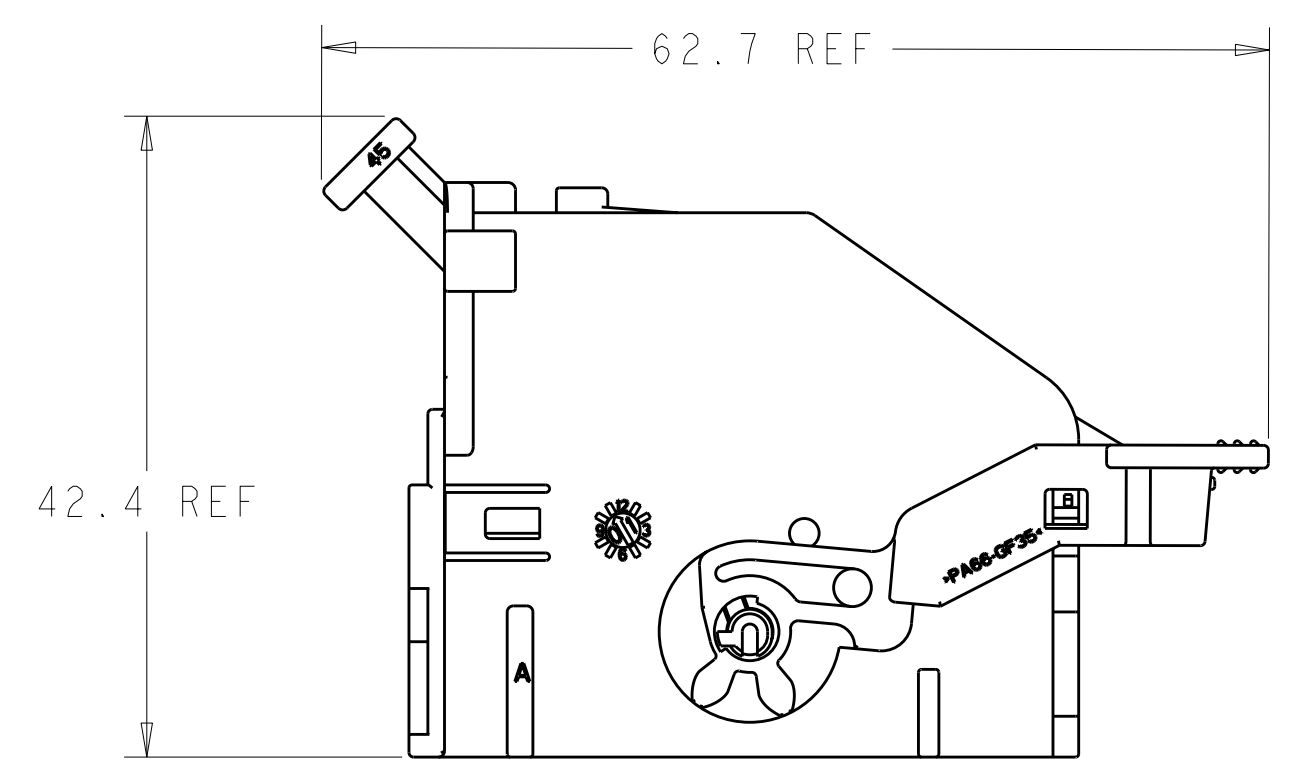


- 1. MATERIAL: SHIELD - 35% GLASS REINFORCED NYLON, SEE TABLE BELOW FOR COLOR.
LEVER - 35% GLASS REINFORCED NYLON, COLOR GRAY.
- 2. REFERENCE: RECEPTACLE HOUSING 1326227-1 USED WITH THIS ASSEMBLY.
- 3. REFER TO INSTRUCTION SHEET 408-8662 FOR PRODUCT ASSEMBLY AND DISASSEMBLY PROCEDURES.
- 4. REFER TO USCAR-2 REV 3 APRIL 2001 FOR PRODUCT SPECIFICATIONS.
- 5. REFER TO DRAWING NO. AUAUT00000-2962-0486 FOR INTERFACE DETAILS.

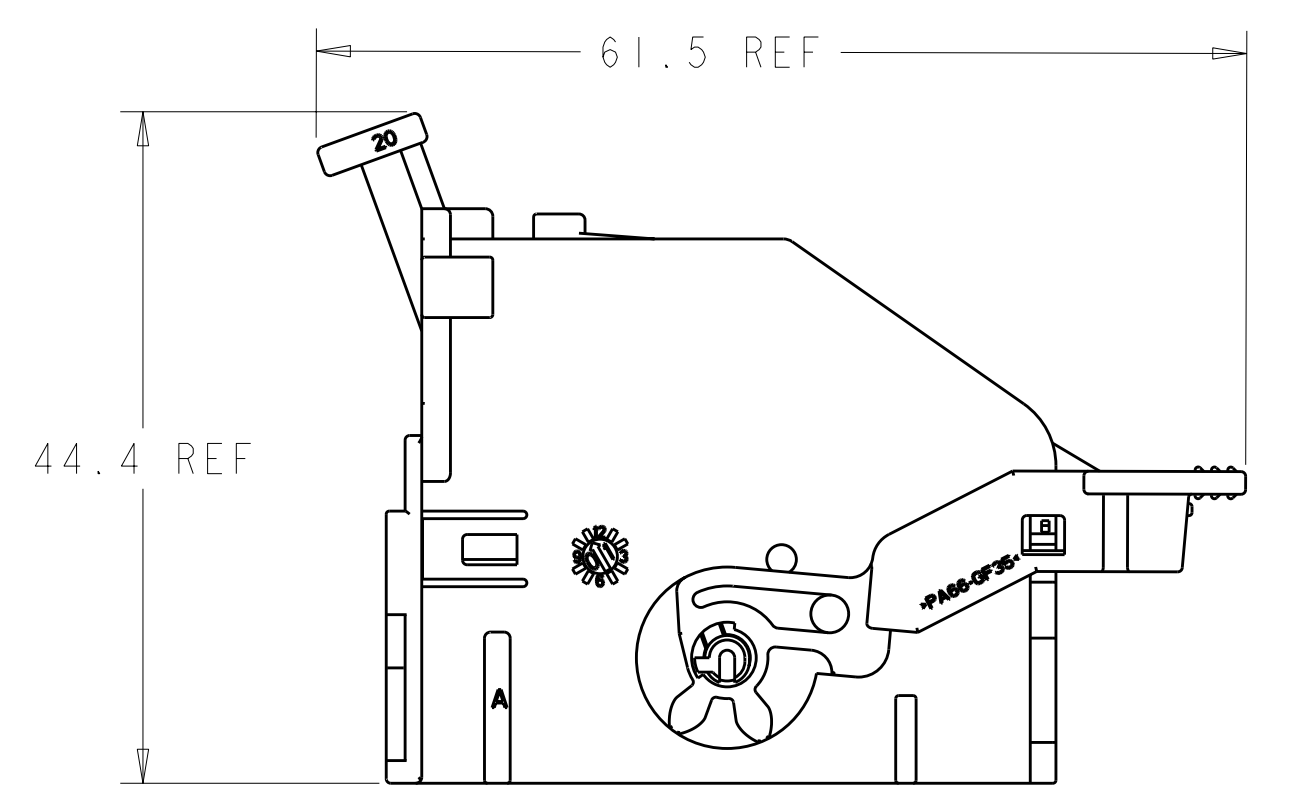
| LOC | DIST | REVISIONS | | | |
|-----|------|-----------|-------------------------------|-----------|---------|
| FX | 00 | REV | DATE | BY | APPD |
| | | 0 | RELEASED PER EC# OK80-0283-02 | 20DEC2002 | SPT AME |
| | | A | REV PER EC# OK80-0113-03 | 16APR2003 | RGV AME |
| | | A1 | REV PER ECR-10-011823 | 28MAY2010 | VSS CS |



70° WIRE EXIT
SCALE 2:1



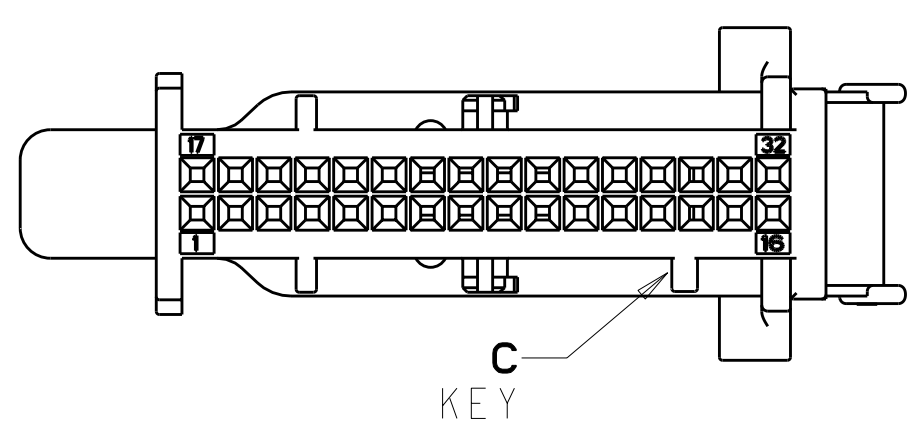
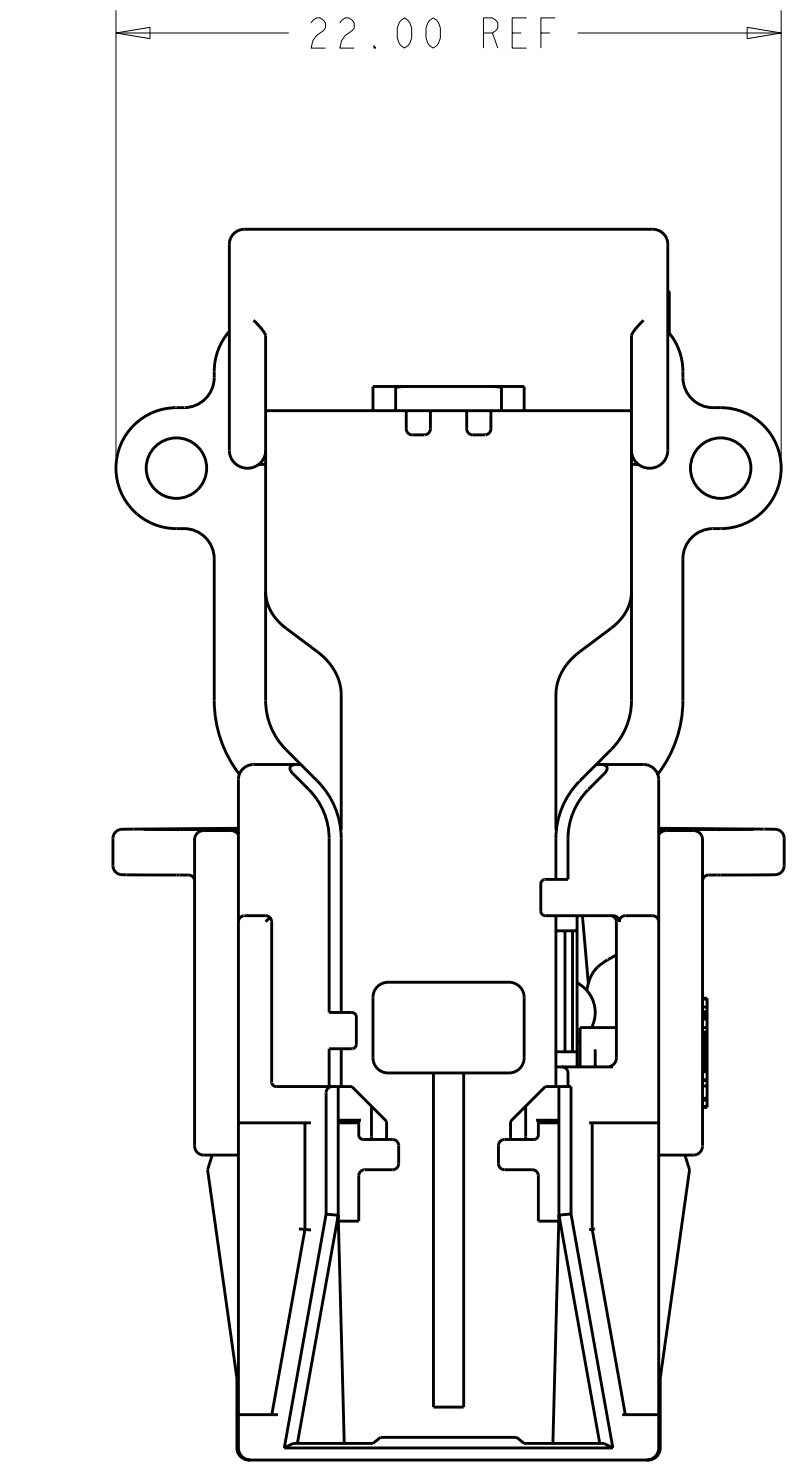
45° WIRE EXIT
SCALE 2:1



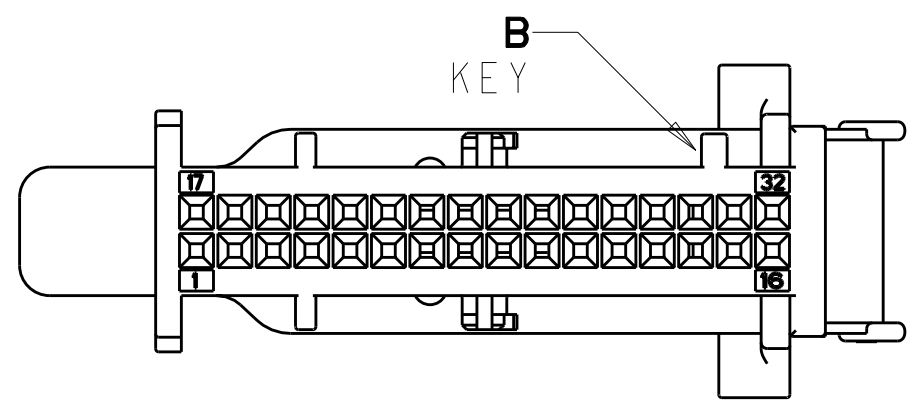
20° WIRE EXIT
SCALE 2:1

**WIRE EXIT OPTIONS
REFERENCE ONLY**

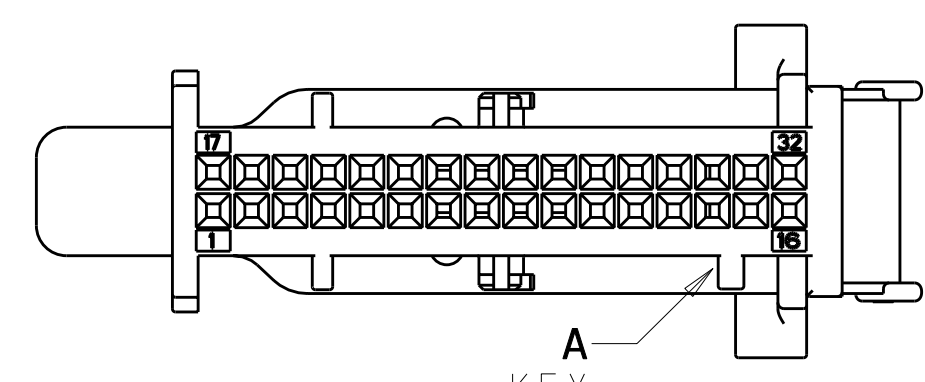
| DIM | W | COLOR | KEYING OPT. | PART NUMBER |
|-----|-------|-------|-------------|-------------|
| 70° | BLACK | A | | 1-1326226-0 |
| 20° | BLACK | C | | 1326226-9 |
| 20° | BLUE | B | | 1326226-8 |
| 20° | GREY | A | | 1326226-7 |
| 45° | BLACK | C | | 1326226-6 |
| 45° | BLUE | B | | 1326226-5 |
| 45° | GREY | A | | 1326226-4 |
| 70° | BLACK | C | | 1326226-3 |
| 70° | BLUE | B | | 1326226-2 |
| 70° | GREY | A | | 1326226-1 |



KEY C SHOWN



KEY B SHOWN

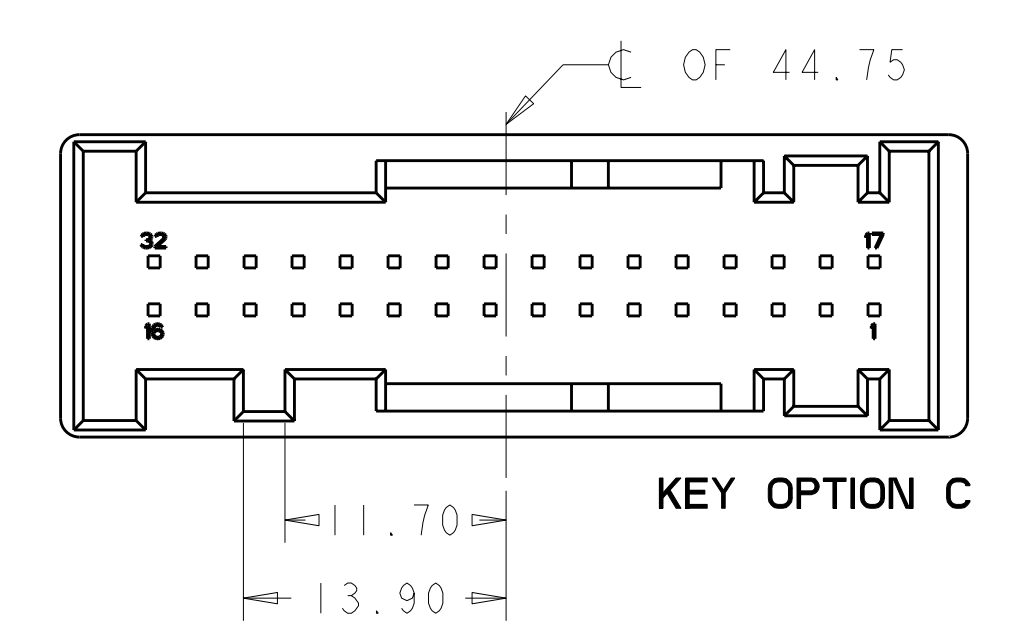
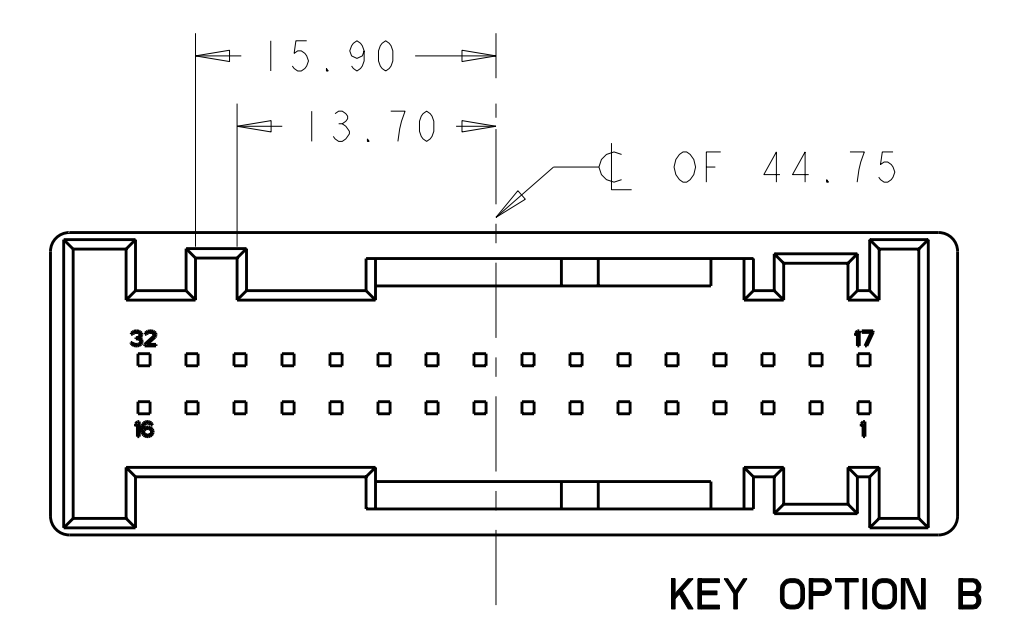
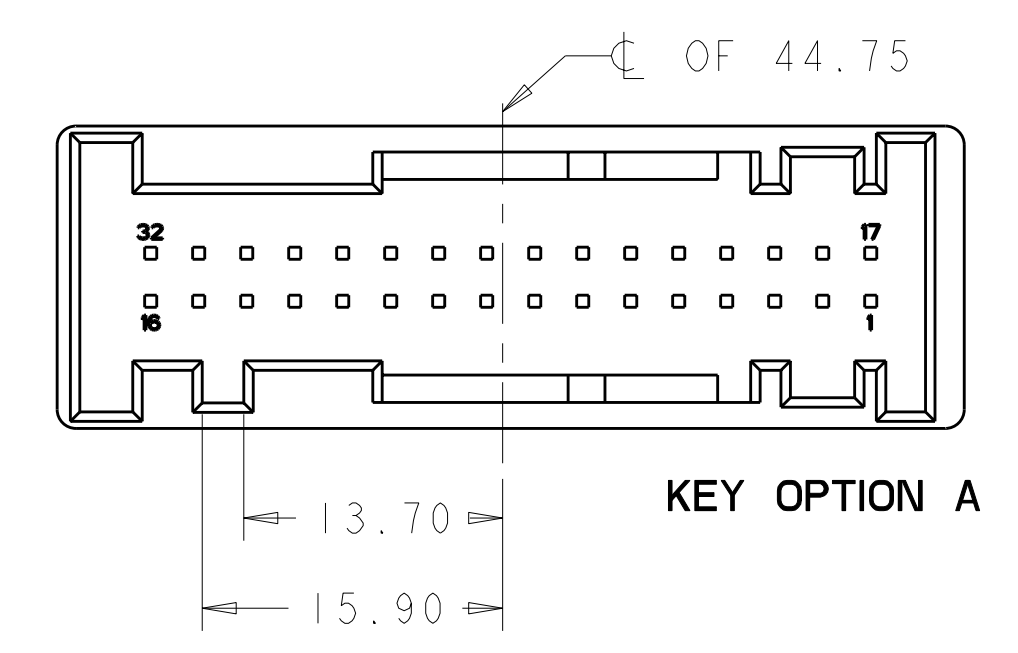
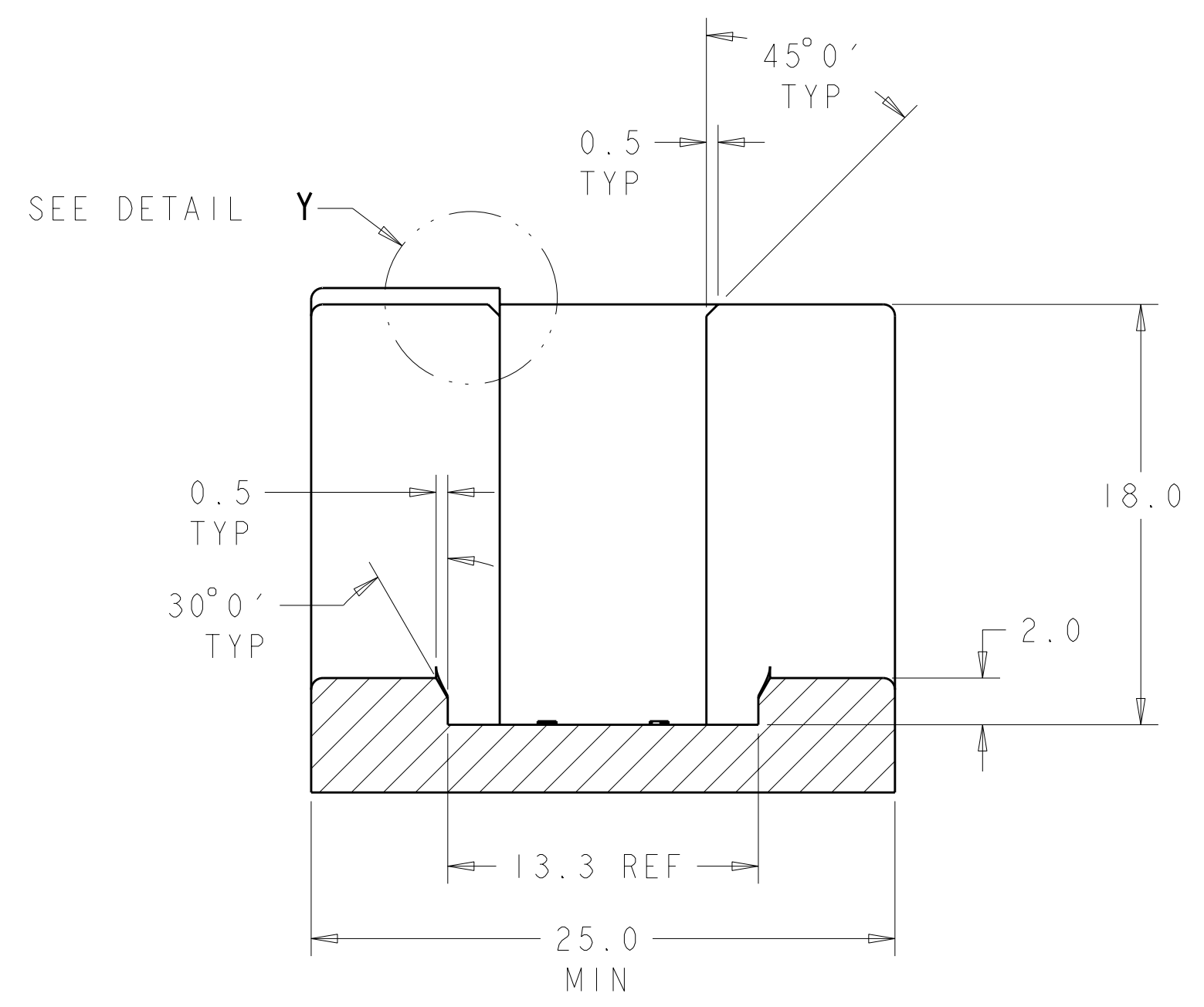
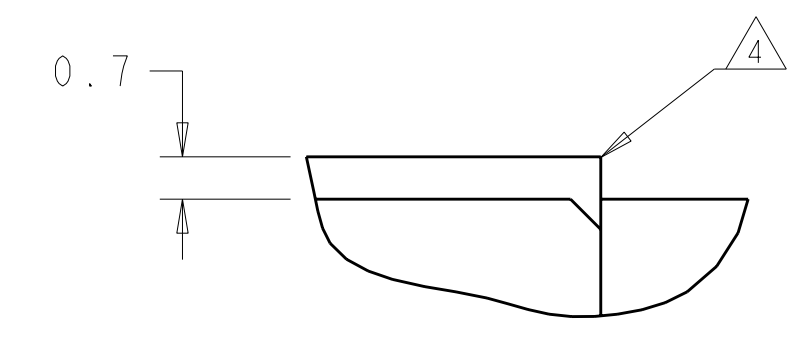
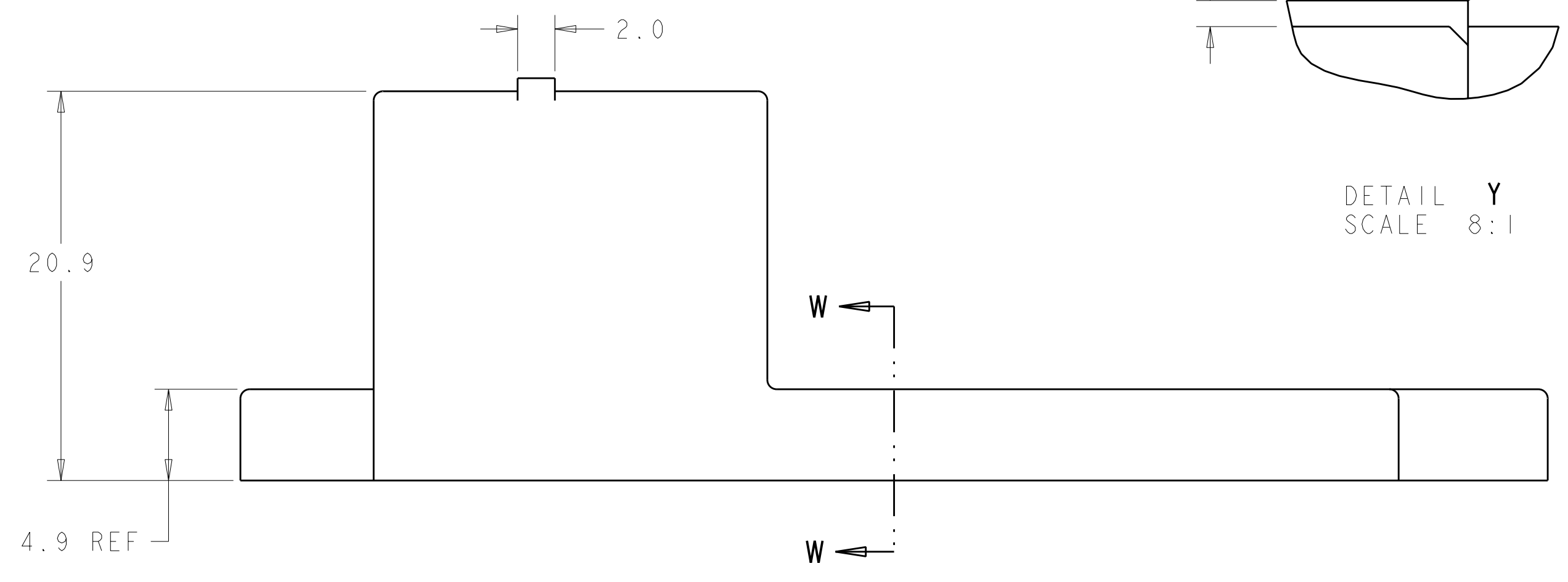
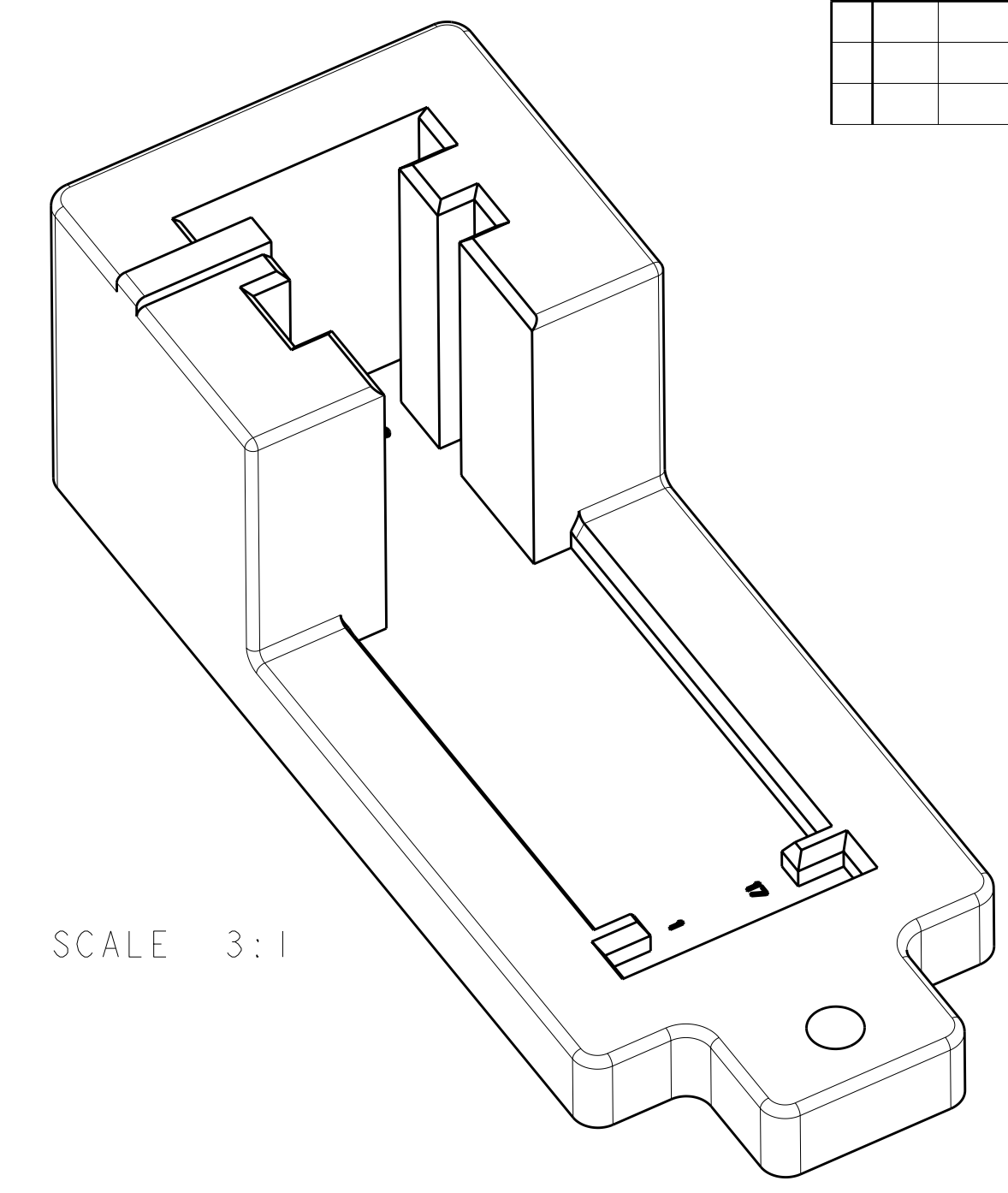
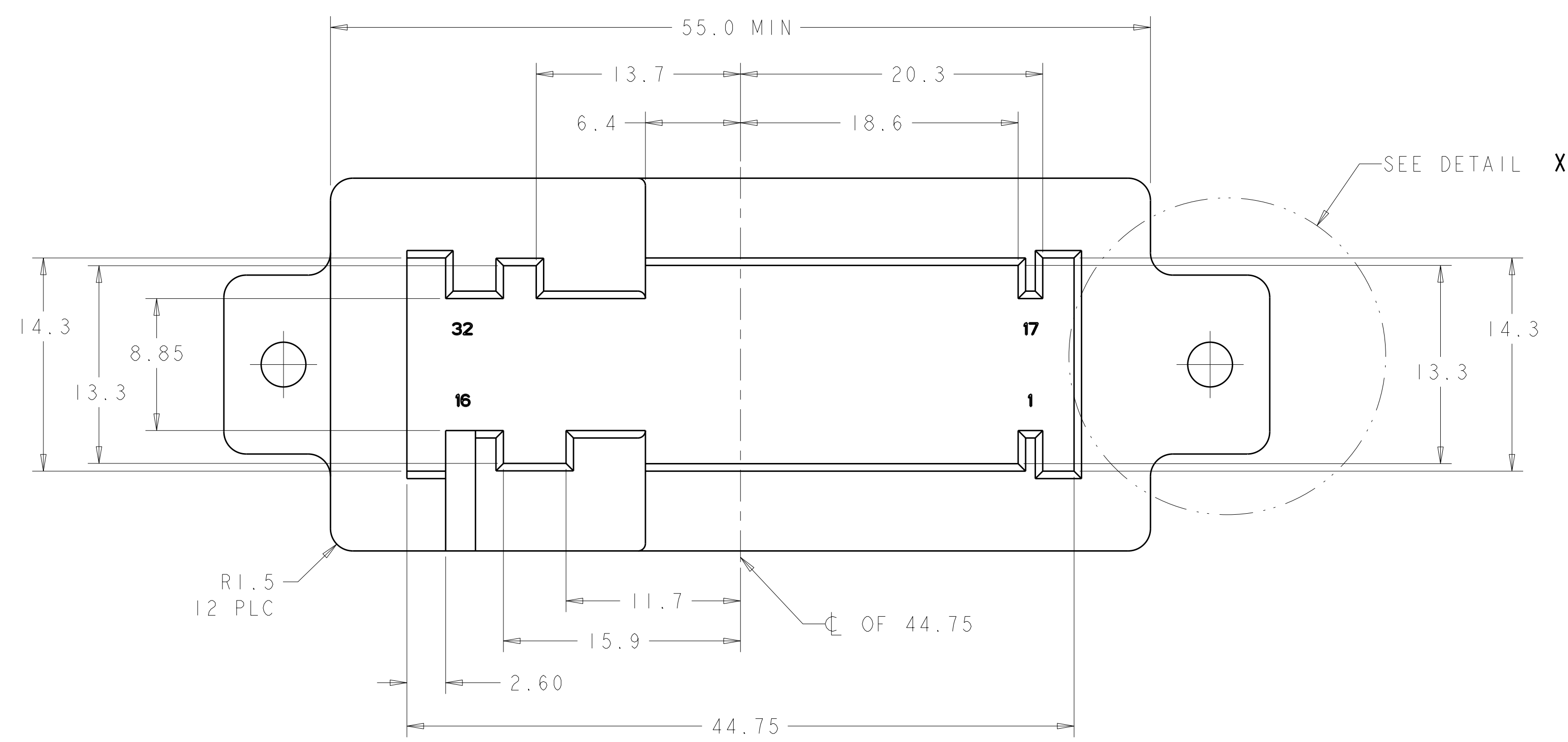


KEY A SHOWN

**KEYING OPTIONS
REFERENCE ONLY**

| | | | | | | | |
|-----------------------|--|--|--|---|--|---|--|
| DIMENSIONS: mm | | TOLERANCES UNLESS OTHERWISE SPECIFIED: 9 PLC ± 1 PLC ±0.2 3 PLC ±0.05 4 PLC ± ANGLES ± FINISH #1 | | DWN W. HOELSCHER 04SEP2001 CHK S. TOBEY 04SEP2001 APVD S. TOBEY 04SEP2001 PRODUCT SPEC APPLICATION SPEC WEIGHT CUSTOMER DRAWING | | Tyco Electronics Harrisburg, PA 17105-3608 NAME SHIELD ASSEMBLY 32 POSITION 0.64mm LAC SIZE CAGE CODE DRAWING NO. RESTRICTED TO A1 00779 C=1326226 SHEET 1 OF 2 REV A1 | |
|-----------------------|--|--|--|---|--|---|--|

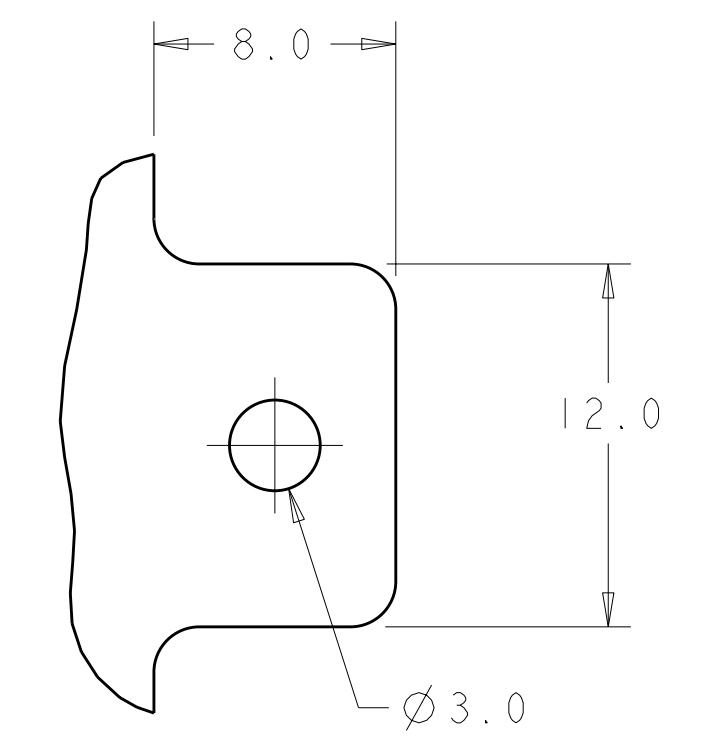
| LOC | DIST | REV | DATE | BY | APPD |
|-----|------|-------------|------|----|------|
| FX | 00 | | | | |
| | | DESCRIPTION | DATE | BY | APPD |
| | | SEE SHEET 1 | | | |



32 POSITION CONNECTOR FIXTURE
 (SHOWN WITH CLEARANCE FOR ALL KEY OPTIONS)

KEYING OPTIONS

- CONNECTOR FIXTURE SHOULD BE USED TO VERIFY THE RECEPTACLE CARRIER IS PROPERLY SEATED AND LOCKED INTO THE SHIELD ASSEMBLY. THE CONNECTOR WILL NOT FULLY MATE TO THE FIXTURE IF THE RECEPTACLE CARRIER IS OUT OF POSITION.
- RECOMMEND USING A SENSING DEVICE FOR VERIFYING FULLY MATED CONNECTORS. SUCH A DEVICE IS UP TO THE CUSTOMERS DISCRETION.
- RECOMMENDED MATERIAL: HARDEND STEEL
- NO RADII OR CHAMFER PERMITTED IN SPECIFIED AREA. MUST MAINTAIN 90° EDGE.
- RADII TO BE 0.5 UNLESS OTHERWISE SPECIFIED.
- OPTIONAL CONSTRAINT FEATURE.



| | | | | |
|--|---|---|---|--|
| <small>THIS DRAWING IS UNPUBLISHED. RELEASED FOR PUBLICATION BY TYCO ELECTRONICS CORPORATION. ALL RIGHTS RESERVED. THIS IS SUBJECT TO CHANGE WITHOUT NOTICE AND WITHOUT OBLIGATION. SHOULD BE CONTACTED FOR THE LATEST REVISION.</small> | | DWN: W. HOELSCHER CHK: S. TOBEY APVD: S. TOBEY | 04SEP2001 04SEP2001 04SEP2001 | Tyco Electronics Harrisburg, PA 17105-3608 |
| DIMENSIONS: mm | TOLERANCES UNLESS OTHERWISE SPECIFIED: 9 PLC ± 1 PLC ±0.2 5 PLC ±0.05 4 PLC ± ANGLES ± FINISH ±#1 | NAME: S. TOBEY PRODUCT SPEC: APPLICATION SPEC: WEIGHT: CUSTOMER DRAWING | NAME: SHIELD ASSEMBLY 32 POSITION 0.64mm LAC SIZE: CAGE CODE: DRAWING NO: A11 00779 C=1326226 | RESTRICTED TO: SCALE: 5:2 SHEET 2 OF 2 REV A1 |