



Chipsmall Limited consists of a professional team with an average of over 10 year of expertise in the distribution of electronic components. Based in Hongkong, we have already established firm and mutual-benefit business relationships with customers from,Europe,America and south Asia,supplying obsolete and hard-to-find components to meet their specific needs.

With the principle of “Quality Parts,Customers Priority,Honest Operation,and Considerate Service”,our business mainly focus on the distribution of electronic components. Line cards we deal with include Microchip,ALPS,ROHM,Xilinx,Pulse,ON,Everlight and Freescale. Main products comprise IC,Modules,Potentiometer,IC Socket,Relay,Connector.Our parts cover such applications as commercial,industrial, and automotives areas.

We are looking forward to setting up business relationship with you and hope to provide you with the best service and solution. Let us make a better world for our industry!



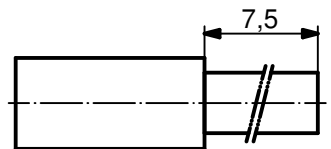
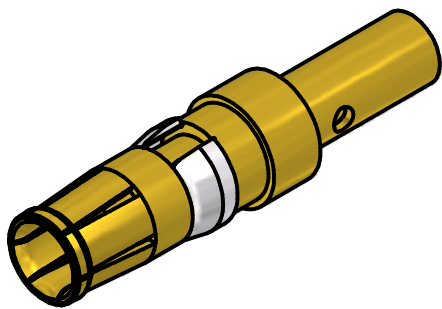
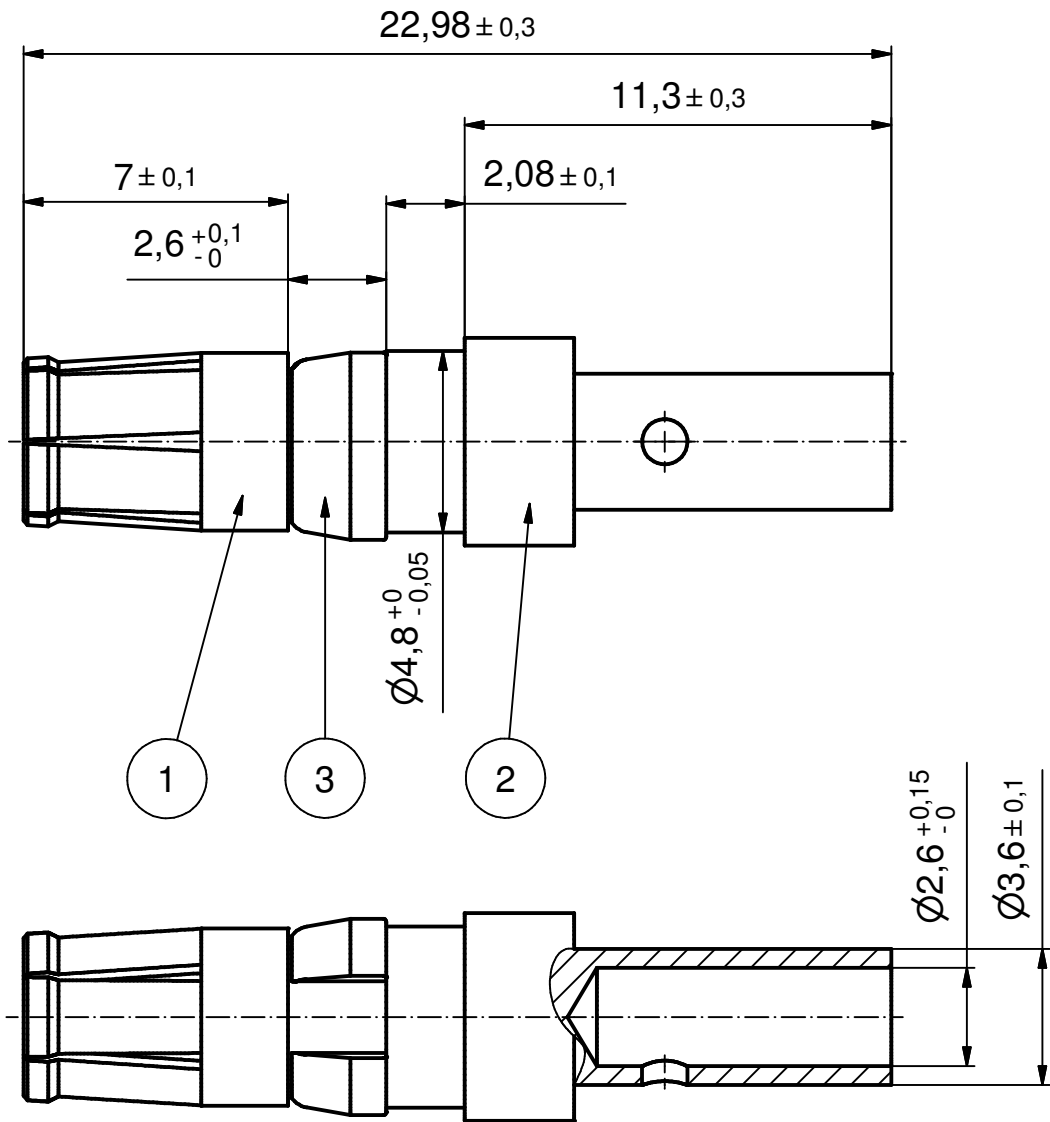
## Contact us

Tel: +86-755-8981 8866 Fax: +86-755-8427 6832

Email & Skype: info@chipsmall.com Web: www.chipsmall.com

Address: A1208, Overseas Decoration Building, #122 Zhenhua RD., Futian, Shenzhen, China





**STRIPPING DIMENSIONS**

**NOTES:**

1. MATERIAL: COPPER ALLOY

2. PLATING:

(b) ITEM 1+2: GOLD FLASH over NICKEL  
ITEM 3: NICKEL PLATED

3. CRIMPING: USE CRIMP TOOL 360X10409X

WITH TOOL INSERT 360X20029X

SELECTOR SETTINGS: 5 FOR AWG 12

4 FOR AWG 14

Directive 2002/95/EC RoHS compliant

(b)

THIS DRAWING MAY NOT BE COPIED OR REPRODUCED IN ANY WAY, AND MAY NOT BE PASSED ON TO A THIRD PARTY WITHOUT WRITTEN PERMISSION. OWNERSHIP AND COPYRIGHT OF CONEC GmbH

DO NOT ALTER CAD DRAWING BY HAND

finish:				tolerance		scale:	
see notes				ISO 2768-m		5:1	
				dim. in mm		material:	
						see notes	
				date		title:	
				name		HIGH POWER CONTACT FEMALE	
				drawn 26.07.06		CRIMP VERSION 20A	
				appd. 26.07.06		D-SUB COMBINATION	
				norm		dwg no:	
				d-old		Inventor 10	
2 x b		Ä3554		19.01.11		DIN-A4	
a		Origin				sh: 1	
rev.		description		date		part no:	
						132A11029X	



material:		see notes	
title:			
HIGH POWER CONTACT FEMALE			
CRIMP VERSION 20A			
D-SUB COMBINATION			
dwg no:		Inventor 10	
part no:		132A11029X	