



Chipsmall Limited consists of a professional team with an average of over 10 year of expertise in the distribution of electronic components. Based in Hongkong, we have already established firm and mutual-benefit business relationships with customers from,Europe,America and south Asia,supplying obsolete and hard-to-find components to meet their specific needs.

With the principle of “Quality Parts,Customers Priority,Honest Operation,and Considerate Service”,our business mainly focus on the distribution of electronic components. Line cards we deal with include Microchip,ALPS,ROHM,Xilinx,Pulse,ON,Everlight and Freescale. Main products comprise IC,Modules,Potentiometer,IC Socket,Relay,Connector.Our parts cover such applications as commercial,industrial, and automotives areas.

We are looking forward to setting up business relationship with you and hope to provide you with the best service and solution. Let us make a better world for our industry!



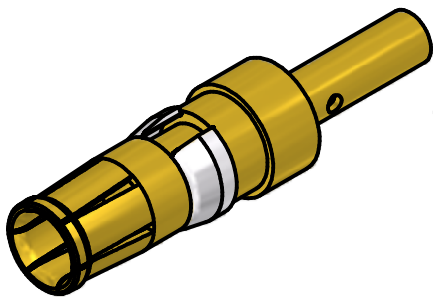
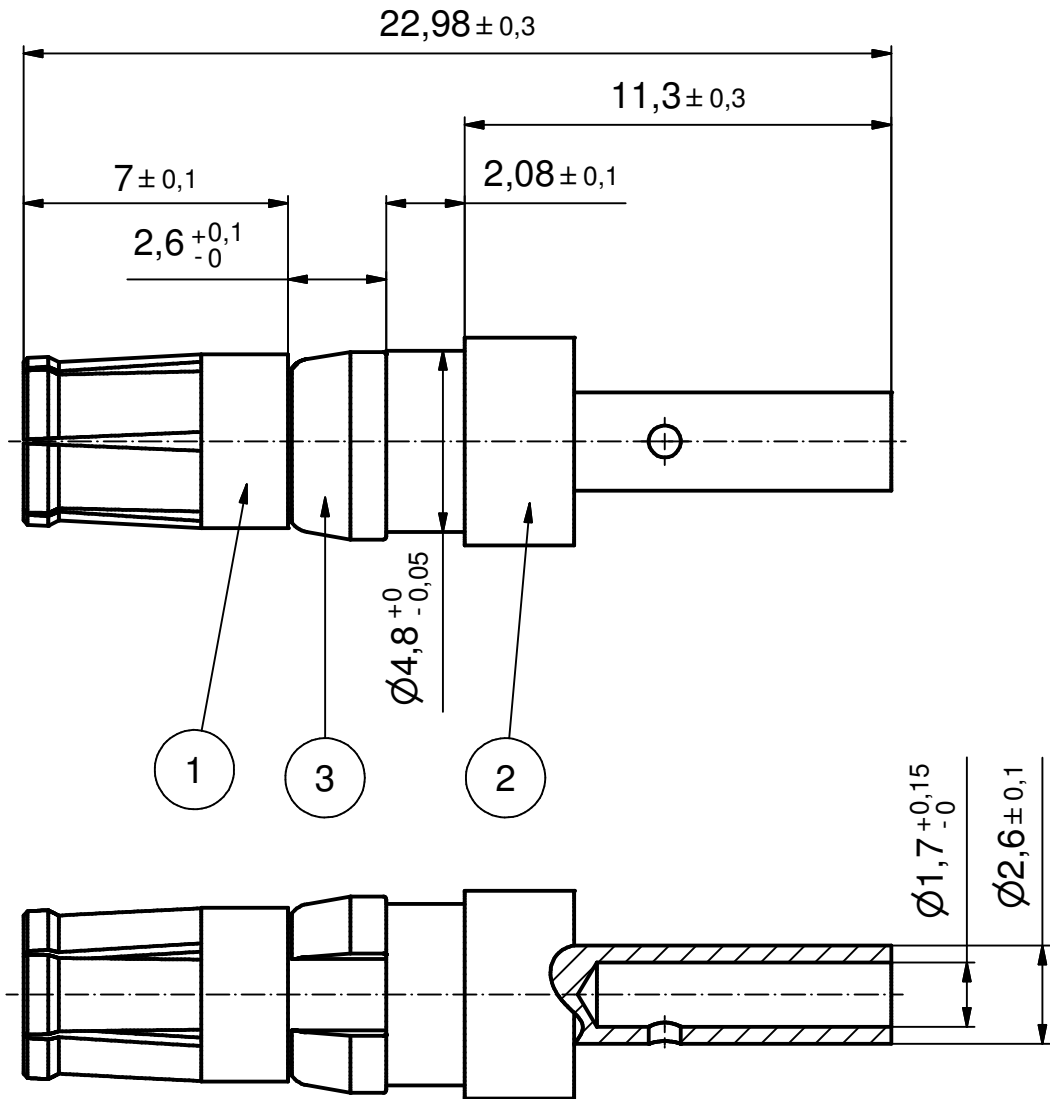
## Contact us

Tel: +86-755-8981 8866 Fax: +86-755-8427 6832

Email & Skype: info@chipsmall.com Web: www.chipsmall.com

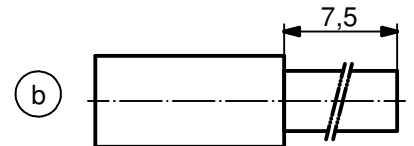
Address: A1208, Overseas Decoration Building, #122 Zhenhua RD., Futian, Shenzhen, China





**NOTES:**

1. MATERIAL: COPPER ALLOY
2. PLATING:  
ITEM 1: 30µin HARD GOLD OVER min. 50µin NICKEL  
ITEM 2: GOLD FLASH over NICKEL  
ITEM 3: NICKEL PLATED
3. CRIMPING: USE CRIMP TOOL 360X10409X  
WITH TOOL INSERT 360X20029X  
SELECTOR SETTINGS: 3 FOR AWG 16  
2 FOR AWG 18  
2 FOR AWG 20



**STRIPPING DIMENSIONS**

Directive 2002/95/EC RoHS compliant

THIS DRAWING MAY NOT BE COPIED OR REPRODUCED IN ANY WAY, AND MAY NOT BE PASSED ON TO A THIRD PARTY WITHOUT WRITTEN PERMISSION. OWNERSHIP AND COPYRIGHT OF CONEC GmbH

DO NOT ALTER CAD DRAWING BY HAND

finish:				tolerance		scale:		
see notes				ISO 2768-m		5:1		
				dim. in mm		material:		
						see notes		
				date		title:		
				name		HIGH POWER CONTACT FEMALE		
				drawn 23.03.98		CRIMP VERSION 10A		
				appd. 23.03.98		D-SUB COMBINATION		
				norm		dwg no:		
				d-old		13K1IE7A		
3 x b	Ä3854	19.01.2011	K.H.					DIN-A4
a	Origin							sh: 1
rev.	description	date	name					part no:



title:		HIGH POWER CONTACT FEMALE	
		CRIMP VERSION 10A	
		D-SUB COMBINATION	
dwg no:		13K1IE7A	
part no:		132C11019X	