



Chipsmall Limited consists of a professional team with an average of over 10 year of expertise in the distribution of electronic components. Based in Hongkong, we have already established firm and mutual-benefit business relationships with customers from,Europe,America and south Asia,supplying obsolete and hard-to-find components to meet their specific needs.

With the principle of “Quality Parts,Customers Priority,Honest Operation,and Considerate Service”,our business mainly focus on the distribution of electronic components. Line cards we deal with include Microchip,ALPS,ROHM,Xilinx,Pulse,ON,Everlight and Freescale. Main products comprise IC,Modules,Potentiometer,IC Socket,Relay,Connector.Our parts cover such applications as commercial,industrial, and automotives areas.

We are looking forward to setting up business relationship with you and hope to provide you with the best service and solution. Let us make a better world for our industry!



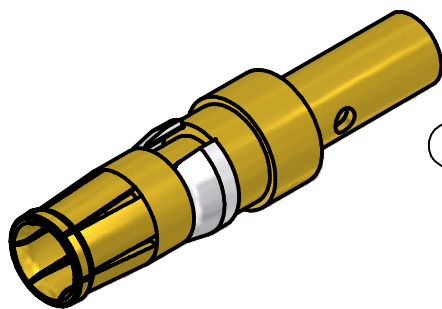
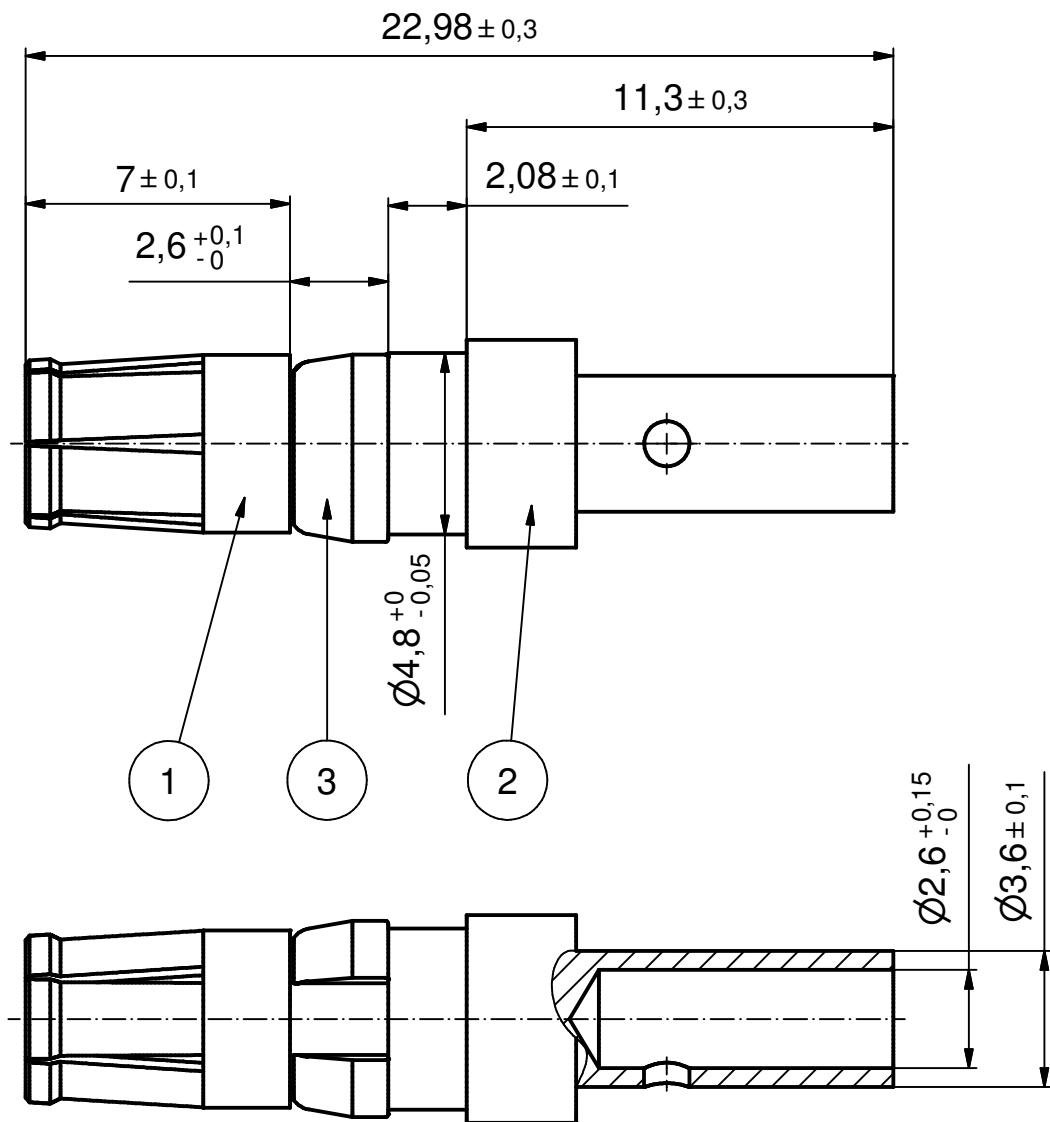
Contact us

Tel: +86-755-8981 8866 Fax: +86-755-8427 6832

Email & Skype: info@chipsmall.com Web: www.chipsmall.com

Address: A1208, Overseas Decoration Building, #122 Zhenhua RD., Futian, Shenzhen, China



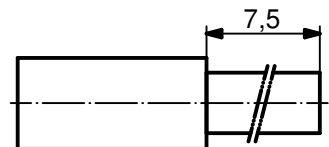


(b)

NOTES:

1. MATERIAL: COPPER ALLOY
2. PLATING:
ITEM 1: 30µin HARD GOLD over min. 50µin NICKEL
ITEM 2: GOLD FLASH over NICKEL
ITEM 3: NICKEL PLATED
3. CRIMPING: USE CRIMP TOOL 360X10409X
WITH TOOL INSERT 360X20029X
SELECTOR SETTINGS: 5 FOR AWG 12
4 FOR AWG 14

(b)



STRIPPING DIMENSIONS

Directive 2002/95/EC RoHS compliant

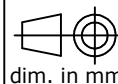
(b)

THIS DRAWING MAY NOT BE COPIED OR
REPRODUCED IN ANY WAY, AND MAY NOT
BE PASSED ON TO A THIRD PARTY WITHOUT
WRITTEN PERMISSION.
OWNERSHIP AND COPYRIGHT OF CONEC GmbH

DO NOT ALTER CAD DRAWING BY HAND

finish:			
see notes			
3 x b	Ä3554	19.01.11	K.H.
a	Origin		
rev.	description	date	name

tolerance		
ISO 2768-m		
	date	name
drawn	23.03.98	Barcinski
appd.	23.03.98	Mickenbecker
norm		
d-old		



dim. in mm

scale:	5:1		
material:	see notes		
title:	HIGH POWER CONTACT FEMALE CRIMP VERSION 20A D-SUB COMBINATION		
dwg no:	Inventor 10	DIN-A4	
13K1IE8A		sh: 1	
part no:	132C11029X		

CONEC®