



Chipsmall Limited consists of a professional team with an average of over 10 year of expertise in the distribution of electronic components. Based in Hongkong, we have already established firm and mutual-benefit business relationships with customers from,Europe,America and south Asia,supplying obsolete and hard-to-find components to meet their specific needs.

With the principle of “Quality Parts,Customers Priority,Honest Operation,and Considerate Service”,our business mainly focus on the distribution of electronic components. Line cards we deal with include Microchip,ALPS,ROHM,Xilinx,Pulse,ON,Everlight and Freescale. Main products comprise IC,Modules,Potentiometer,IC Socket,Relay,Connector.Our parts cover such applications as commercial,industrial, and automotives areas.

We are looking forward to setting up business relationship with you and hope to provide you with the best service and solution. Let us make a better world for our industry!



## Contact us

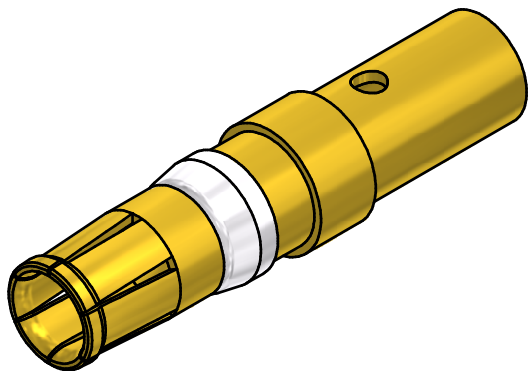
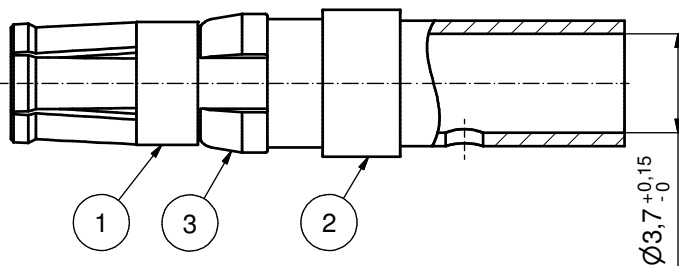
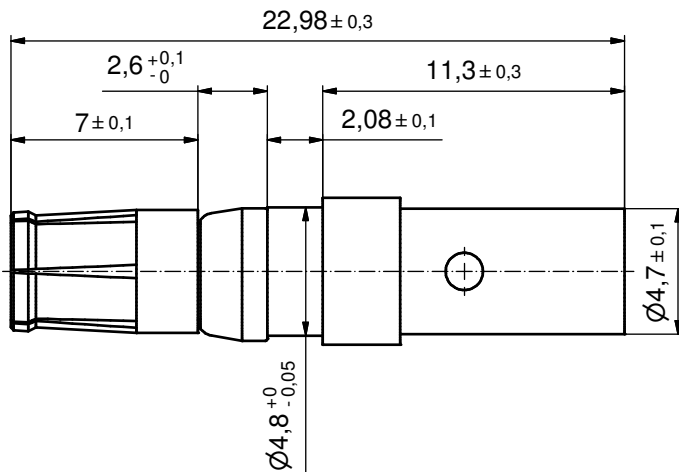
Tel: +86-755-8981 8866 Fax: +86-755-8427 6832

Email & Skype: info@chipsmall.com Web: www.chipsmall.com

Address: A1208, Overseas Decoration Building, #122 Zhenhua RD., Futian, Shenzhen, China



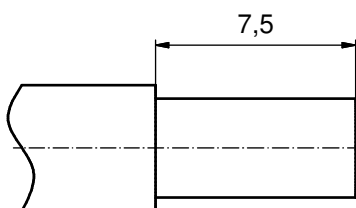
(c) (d)



(d) (b) NOTES:  
 CRIMPING:  
 USE CRIMP TOOL: 360X10409X  
 WITH TOOL INSERT: 360X20029X  
 SELECTOR SETTINGS: 7 FOR AWG 10  
 6 FOR AWG 12

plating	part no.
GOLD FLASH over NICKEL	132A11039X
30µin HARD GOLD over min. 50µin NICKEL	132C11039X
50µin HARD GOLD over min. 50µin NICKEL	132J11039X

(b) STRIPPING DIMENSIONS



RoHS compliant

pos	qty	description	material	plating
3	1	RETAINING RING	COPPER ALLOY	NICKEL PLATED
2	1	REAR SIDE	COPPER ALLOY	GOLD FLASH over NICKEL
1	1	MATING SIDE	COPPER ALLOY	see table

partlist				tolerance	dim. in mm	scale:	5:1
				date	name	material:	see partlist
				drawn	23.03.98	title:	
				appd.	23.03.98	HIGH POWER CONTACT FEMALE	
				4 x d	Å5877	CRIMP VERSION 30A	
				1 x c	Å2197	D-SUB COMBINATION	
				2 x b	Å2177	dwg no:	
				a	Original	13K11E9A	
				rev.	description	part no:	
				date	name	see table	



DIN-A3  
sh: 1