



Chipsmall Limited consists of a professional team with an average of over 10 year of expertise in the distribution of electronic components. Based in Hongkong, we have already established firm and mutual-benefit business relationships with customers from,Europe,America and south Asia,supplying obsolete and hard-to-find components to meet their specific needs.

With the principle of “Quality Parts,Customers Priority,Honest Operation,and Considerate Service”,our business mainly focus on the distribution of electronic components. Line cards we deal with include Microchip,ALPS,ROHM,Xilinx,Pulse,ON,Everlight and Freescale. Main products comprise IC,Modules,Potentiometer,IC Socket,Relay,Connector.Our parts cover such applications as commercial,industrial, and automotives areas.

We are looking forward to setting up business relationship with you and hope to provide you with the best service and solution. Let us make a better world for our industry!



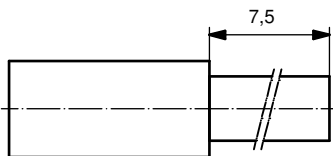
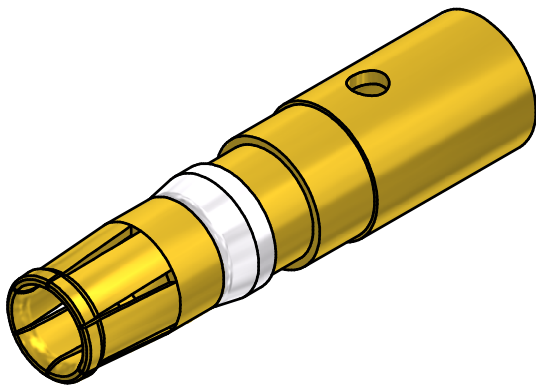
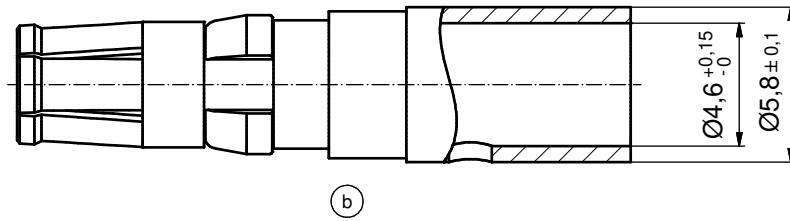
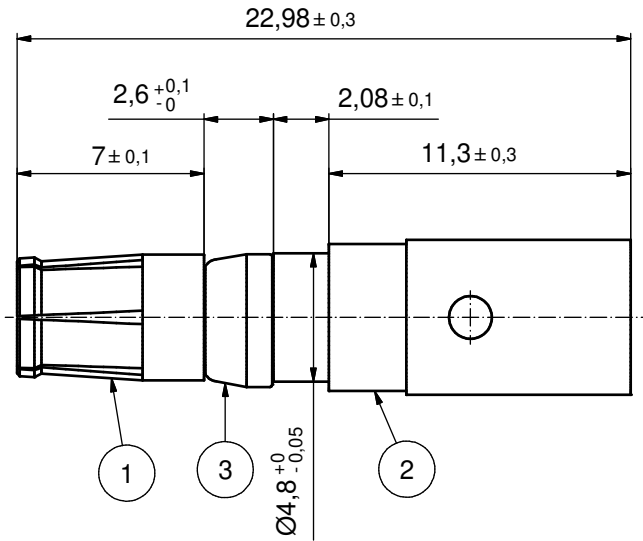
Contact us

Tel: +86-755-8981 8866 Fax: +86-755-8427 6832

Email & Skype: info@chipsmall.com Web: www.chipsmall.com

Address: A1208, Overseas Decoration Building, #122 Zhenhua RD., Futian, Shenzhen, China





(b) STRIPPING DIMENSIONS

NOTES:

1. MATERIAL: COPPER ALLOY

2. PLATING:

ITEM 1: SEE TABLE

ITEM 2: GOLD FLASH over NICKEL

ITEM 3: NICKEL PLATED

3. CRIMPING: USE CRIMP TOOL 360X10409X

WITH TOOL INSERT 360X20029X

SELECTOR SETTINGS: 7 FOR AWG 8

6 FOR AWG 10

(c) 4. CURRENT RATING: PER UL 1977 / CSA - C22.2 No.182.3 (E228329)
-40A

-50A only when used with cable AWG 8 and in combination with

2W2C connectors per following part number system:

Cat. No. 302W2, 302W2 followed by C, followed by P or S,

followed by XX, followed by 99, followed by A1 through A8, C1 through C6,

D1 through D6, E1 through E6, F1 through F6, G1 through G4,

H1 through H4, K1 through K4, L1 through L4, N1 through N4 or

P1 through P4, W1, W2 or S9, followed by 0X or 0A to 0W

when used in conjunction with the following contacts and

pins 131A, 132A, 131C, 132C, 131J and 132J followed by 11049X

PLATING ITEM 1	PART-NO.
GOLD FLASH over NICKEL	132A11049X
min. 30µin HARD GOLD over min. 50µin NICKEL	132C11049X
min. 50µin HARD GOLD over min. 50µin NICKEL	132J11049X

(b)

Directive 2002/95/EC RoHS compliant

THIS DRAWING MAY NOT BE COPIED OR REPRODUCED IN ANY WAY, AND MAY NOT BE PASSED ON TO A THIRD PARTY WITHOUT WRITTEN PERMISSION. OWNERSHIP AND COPYRIGHT OF CONEC GmbH DO NOT ALTER CAD DRAWING BY HAND	finish		tolerance		dim. in mm	scale:		
	SEE NOTES		ISO 2768-m			5:1		
			date		name		material:	
			23.03.98		Barcinski		SEE NOTES	
		date		name		title:		
		17.04.12		K.H.		HIGH POWER CONTACT FEMALE		
		19.01.11		K.H.		CRIMP VERSION AWG 8-10 (c)		
						D-SUB COMBINATION		
2 x c		Ä4283	17.04.12	K.H.	d-old	dwg no:		
4 x b		Ä3854	19.01.11	K.H.		13K11F0A		
a		Origin				DIN-A3		
rev.		description	date	name	part no:		sh: 1	
					SEE TABLE			

