



Chipsmall Limited consists of a professional team with an average of over 10 year of expertise in the distribution of electronic components. Based in Hongkong, we have already established firm and mutual-benefit business relationships with customers from,Europe,America and south Asia,supplying obsolete and hard-to-find components to meet their specific needs.

With the principle of “Quality Parts,Customers Priority,Honest Operation,and Considerate Service”,our business mainly focus on the distribution of electronic components. Line cards we deal with include Microchip,ALPS,ROHM,Xilinx,Pulse,ON,Everlight and Freescale. Main products comprise IC,Modules,Potentiometer,IC Socket,Relay,Connector.Our parts cover such applications as commercial,industrial, and automotives areas.

We are looking forward to setting up business relationship with you and hope to provide you with the best service and solution. Let us make a better world for our industry!



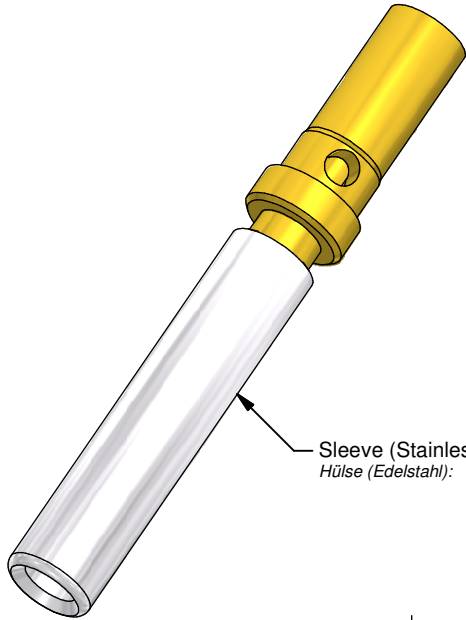
## Contact us

Tel: +86-755-8981 8866 Fax: +86-755-8427 6832

Email & Skype: info@chipsmall.com Web: www.chipsmall.com

Address: A1208, Overseas Decoration Building, #122 Zhenhua RD., Futian, Shenzhen, China





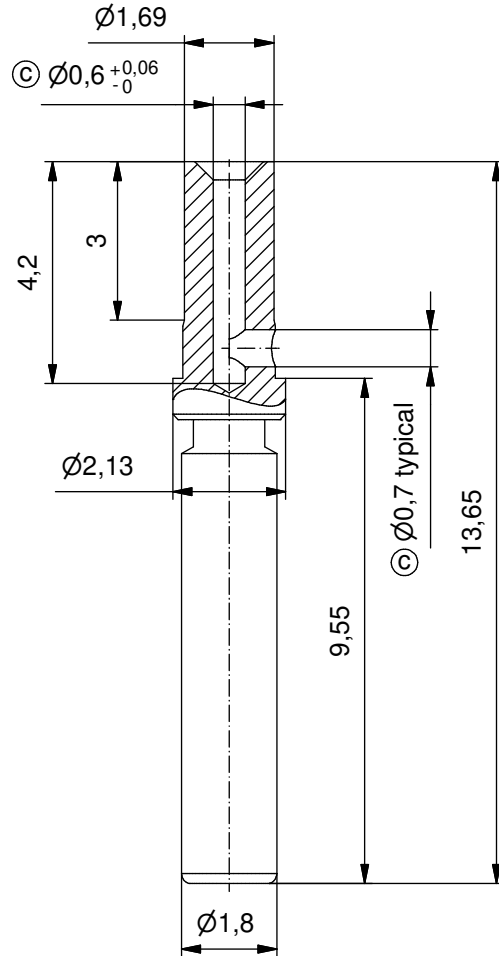
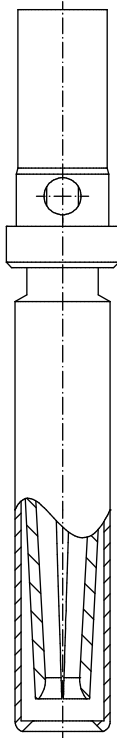
Sleeve (Stainless Steel)  
Hülse (Edelstahl):

**Materials/**

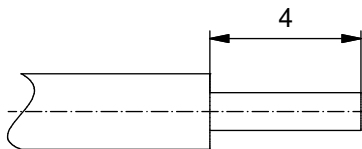
Werkstoffe:	Cu alloy, Au over Ni
Contact/ Kontakt:	
Sleeve/ Hülse:	Stainless Steel/ Edelstahl:

**Installation specification/**

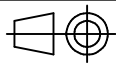
<b>Montagedaten:</b>	
Crimp-Tool/ Crimp-Werkzeug:	360X10329X
Tool Insert/ Werkzeug Einsatz:	360X20039X
Selector Settings/ Selektor Einstellungen:	7 for AWG 24 6 for AWG 26 5 for AWG 28



**Stripping Dimensions/  
Kabelvorbereitung:**



Part no. / Art.-Nr.:	Plating / Veredelung:
132C15029X	min. 30 µin hard Gold over min. 50 µin Nickel min. 30 µin Gold über min. 50 µin Nickel
132J15029X	min. 50 µin hard Gold over min. 50 µin Nickel min. 50 µin Gold über min. 50 µin Nickel



dim. in mm

**Signal Crimp-Contact Socket Contact**  
**Wire Size 24-28**

*Signal Crimp-Kontakt Buchsenkontakt*  
*Kabelgröße 24-28*

general tolerance/  
Allgemeintoleranz: ISO 2768-m

	Date/Datum	Name
drawn/ gez.	15.07.10	Schmidt
appd./ gepr.	15.07.10	Koch

Index: c Ä6258 15.08.16 JL

scale/Maßstab:

7:1

Status: InBearbeitung



dwg no /  
Z.-nr.:

16K1A2679

DIN-  
A4

RoHS & REACH compliant/konform

1 / 1



The reproduction, distribution and utilization of this document as well as the communication of its contents to others without express authorization is prohibited. Offenders will be held liable for the payment of damages. An exemption does not apply to the reproduction and utilization of this document for the purpose of private use only. Die Vervielfältigung, Verbreitung, die öffentliche oder geschäftliche Nutzung dieses Dokuments, die Kommunikation seines Inhalts sind verboten, soweit nicht ausdrücklich gestattet. Zuwiderhandlungen verpflichten zu Schadenersatz. Alle Rechte für den Fall der Patent-, Gebrauchsmarken- oder Geschmacksmarkenregistrierung vorbehalten.