



Chipsmall Limited consists of a professional team with an average of over 10 year of expertise in the distribution of electronic components. Based in Hongkong, we have already established firm and mutual-benefit business relationships with customers from,Europe,America and south Asia,supplying obsolete and hard-to-find components to meet their specific needs.

With the principle of “Quality Parts,Customers Priority,Honest Operation,and Considerate Service”,our business mainly focus on the distribution of electronic components. Line cards we deal with include Microchip,ALPS,ROHM,Xilinx,Pulse,ON,Everlight and Freescale. Main products comprise IC,Modules,Potentiometer,IC Socket,Relay,Connector.Our parts cover such applications as commercial,industrial, and automotives areas.

We are looking forward to setting up business relationship with you and hope to provide you with the best service and solution. Let us make a better world for our industry!



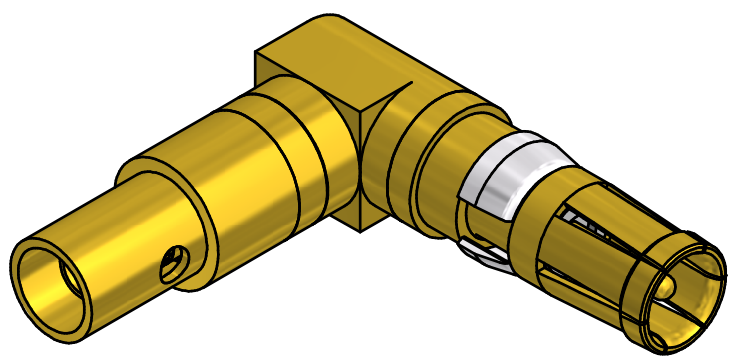
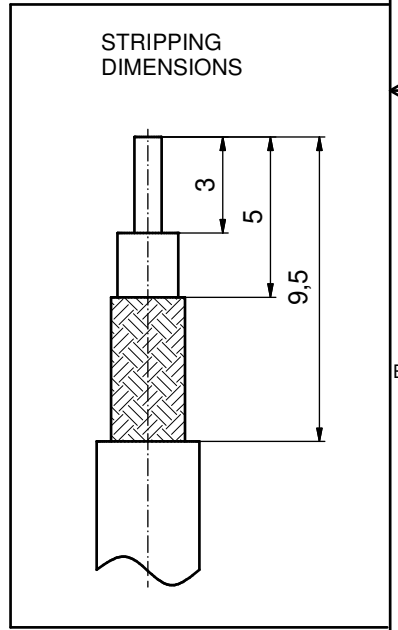
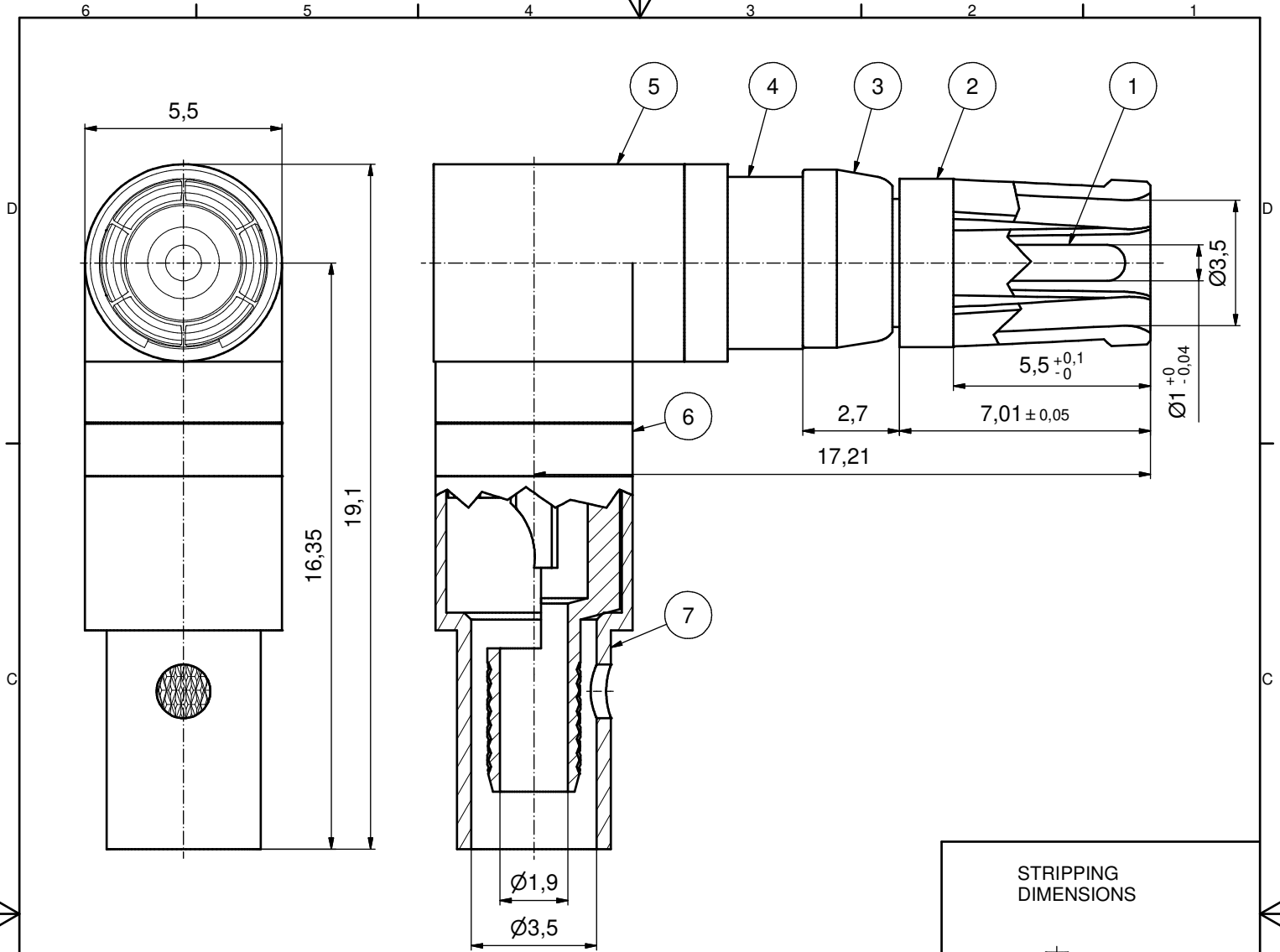
Contact us

Tel: +86-755-8981 8866 Fax: +86-755-8427 6832

Email & Skype: info@chipsmall.com Web: www.chipsmall.com

Address: A1208, Overseas Decoration Building, #122 Zhenhua RD., Futian, Shenzhen, China





Part no.	Finish Pos.1	Finish Pos.2	Finish Pos.3	Finish Pos.4 + 5 + 7 + 6
132A22039X	GOLD FLASH over NICKEL	GOLD FLASH over NICKEL	NICKEL PLATED	GOLD FLASH over NICKEL
132J22039X	min. 50µm HARD GOLD over min. 50µm NICKEL	min. 30 min HARD GOLD over min. 50 min NICKEL	NICKEL PLATED	GOLD FLASH over NICKEL

ASSEMBLY TOOLING:
 1. CENTER CONTACT: SOLDERED
 2. OUTER CONDUCTOR: SOLDERED OR CRIMPED
 USE CRIMP TOOL: 360X10519X
 WITH TOOL INSERT: 360X11039X
 INSERT CAVITY B: HEX 3.83 / .151"

Directive 2011/65/EU RoHS compliant

THIS DRAWING MAY NOT BE COPIED OR REPRODUCED IN ANY WAY, AND MAY NOT BE PASSED ON TO A THIRD PARTY WITHOUT WRITTEN PERMISSION. OWNERSHIP AND COPYRIGHT OF CONEC GmbH		tolerance		dim. in mm		scale: 8:1	
DO NOT ALTER CAD DRAWING BY HAND		date		name		material:	
a Original		drawn 18.08.2014		Heinrich		title:	
rev. description date name		appd. 18.08.2014		Koch		COAXIAL CONTACT SOCKET 90°, 50 OHM	
		norm				for Cable RG 316U double braided	
		d-old				inner conductor for solder termination	
						outer conductor for crimp- or solder termination	
						dwg no:	
						13K1A4748	
						DIN-A3	
						sh: 1	
						part no: SEE TABLE	

