



Chipsmall Limited consists of a professional team with an average of over 10 year of expertise in the distribution of electronic components. Based in Hongkong, we have already established firm and mutual-benefit business relationships with customers from,Europe,America and south Asia,supplying obsolete and hard-to-find components to meet their specific needs.

With the principle of “Quality Parts,Customers Priority,Honest Operation,and Considerate Service”,our business mainly focus on the distribution of electronic components. Line cards we deal with include Microchip,ALPS,ROHM,Xilinx,Pulse,ON,Everlight and Freescale. Main products comprise IC,Modules,Potentiometer,IC Socket,Relay,Connector.Our parts cover such applications as commercial,industrial, and automotives areas.

We are looking forward to setting up business relationship with you and hope to provide you with the best service and solution. Let us make a better world for our industry!



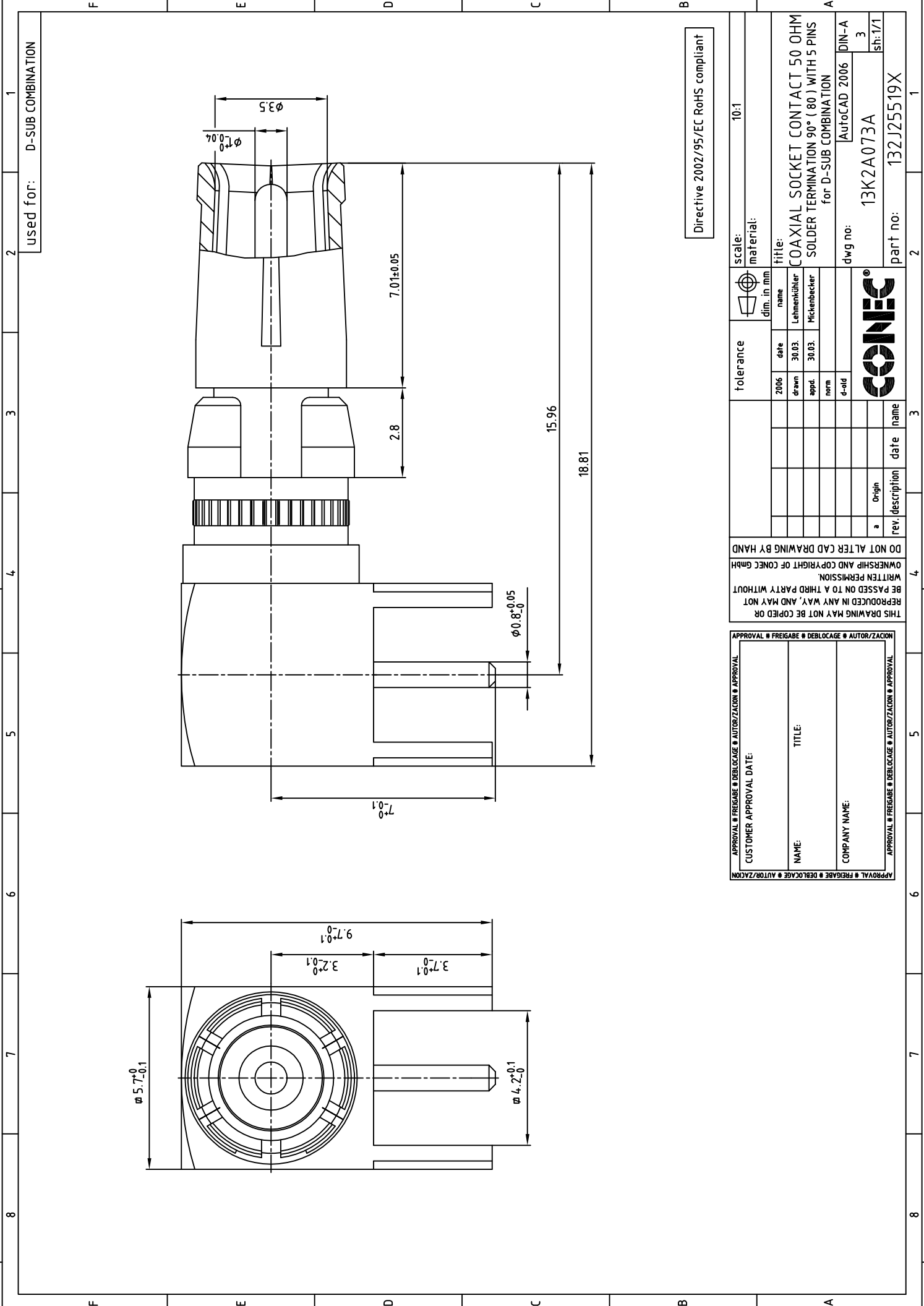
## Contact us

Tel: +86-755-8981 8866 Fax: +86-755-8427 6832

Email & Skype: info@chipsmall.com Web: www.chipsmall.com

Address: A1208, Overseas Decoration Building, #122 Zhenhua RD., Futian, Shenzhen, China





used for: D-SUB COMBINATION

Directive 2002/95/EC RoHS compliant

APPROVAL # FREIGABE # DEBLOCKAGE # AUTORIZACION # APPROVAL		APPROVAL # FREIGABE # DEBLOCKAGE # AUTORIZACION # APPROVAL	
CUSTOMER APPROVAL DATE:		TITLE:	
NAME:		COMPANY NAME:	
APPROVAL # FREIGABE # DEBLOCKAGE # AUTORIZACION # APPROVAL		APPROVAL # FREIGABE # DEBLOCKAGE # AUTORIZACION # APPROVAL	
THIS DRAWING MAY NOT BE COPIED OR REPRODUCED IN ANY WAY, AND MAY NOT BE PASSED ON TO A THIRD PARTY WITHOUT WRITTEN PERMISSION OWNERSHIP AND COPYRIGHT OF CONEC GMBH			
DO NOT ALTER CAD DRAWING BY HAND			
2006	date	2006	name
drawn	30.03.	Lehmentüller	
appd.	30.03.	Mickenbecker	
norm			
e-old			
rev.	description	date	name
a	Origin		
dwg no: 13K2A073A		AutocAD 2006	
part no: 132J25519X		DIN-A	
sh: 1/1		3	
scale: 10:1		material:	
tolerance		title: COAXIAL SOCKET CONTACT 50 OHM SOLDER TERMINATION 90° ( 80 ) WITH 5 PINS for D-SUB COMBINATION	

