



Chipsmall Limited consists of a professional team with an average of over 10 year of expertise in the distribution of electronic components. Based in Hongkong, we have already established firm and mutual-benefit business relationships with customers from,Europe,America and south Asia,supplying obsolete and hard-to-find components to meet their specific needs.

With the principle of “Quality Parts,Customers Priority,Honest Operation,and Considerate Service”,our business mainly focus on the distribution of electronic components. Line cards we deal with include Microchip,ALPS,ROHM,Xilinx,Pulse,ON,Everlight and Freescale. Main products comprise IC,Modules,Potentiometer,IC Socket,Relay,Connector.Our parts cover such applications as commercial,industrial, and automotives areas.

We are looking forward to setting up business relationship with you and hope to provide you with the best service and solution. Let us make a better world for our industry!



Contact us

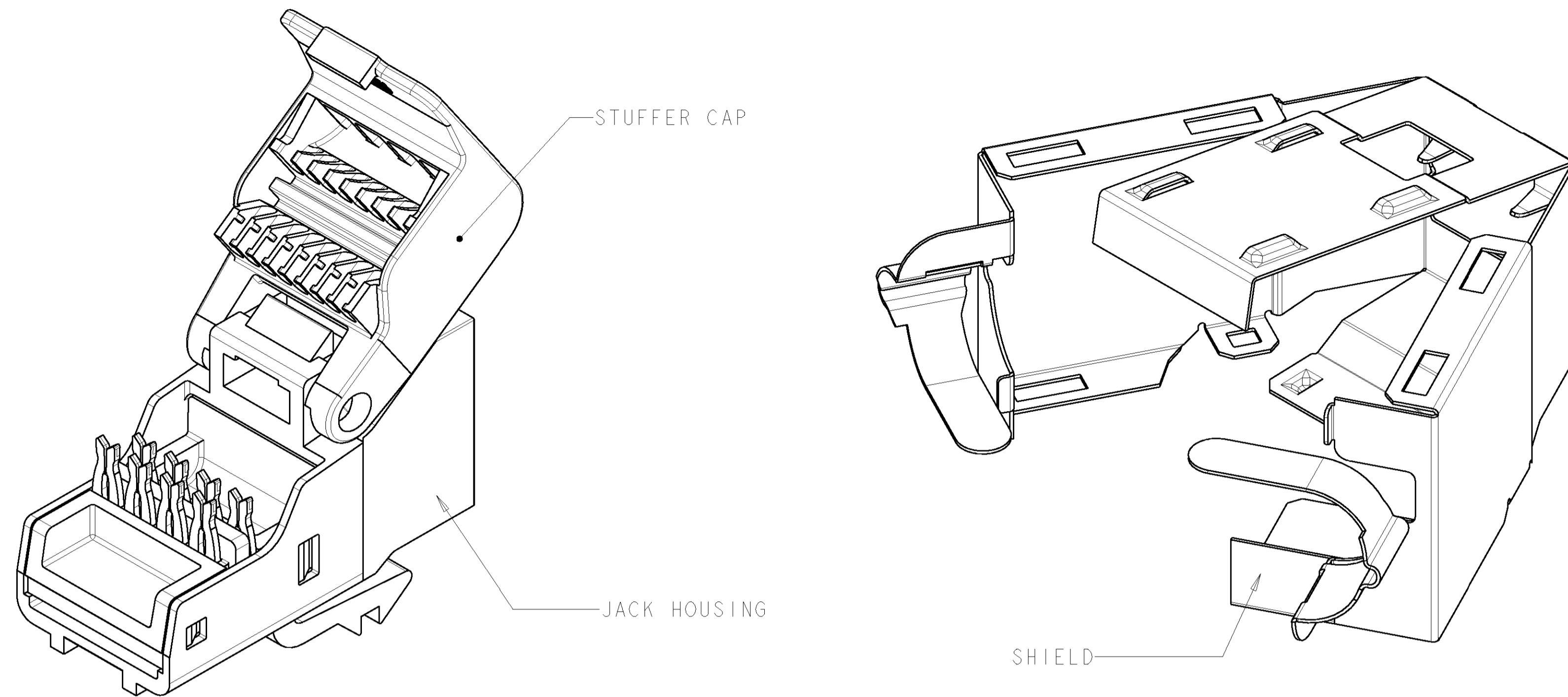
Tel: +86-755-8981 8866 Fax: +86-755-8427 6832

Email & Skype: info@chipsmall.com Web: www.chipsmall.com

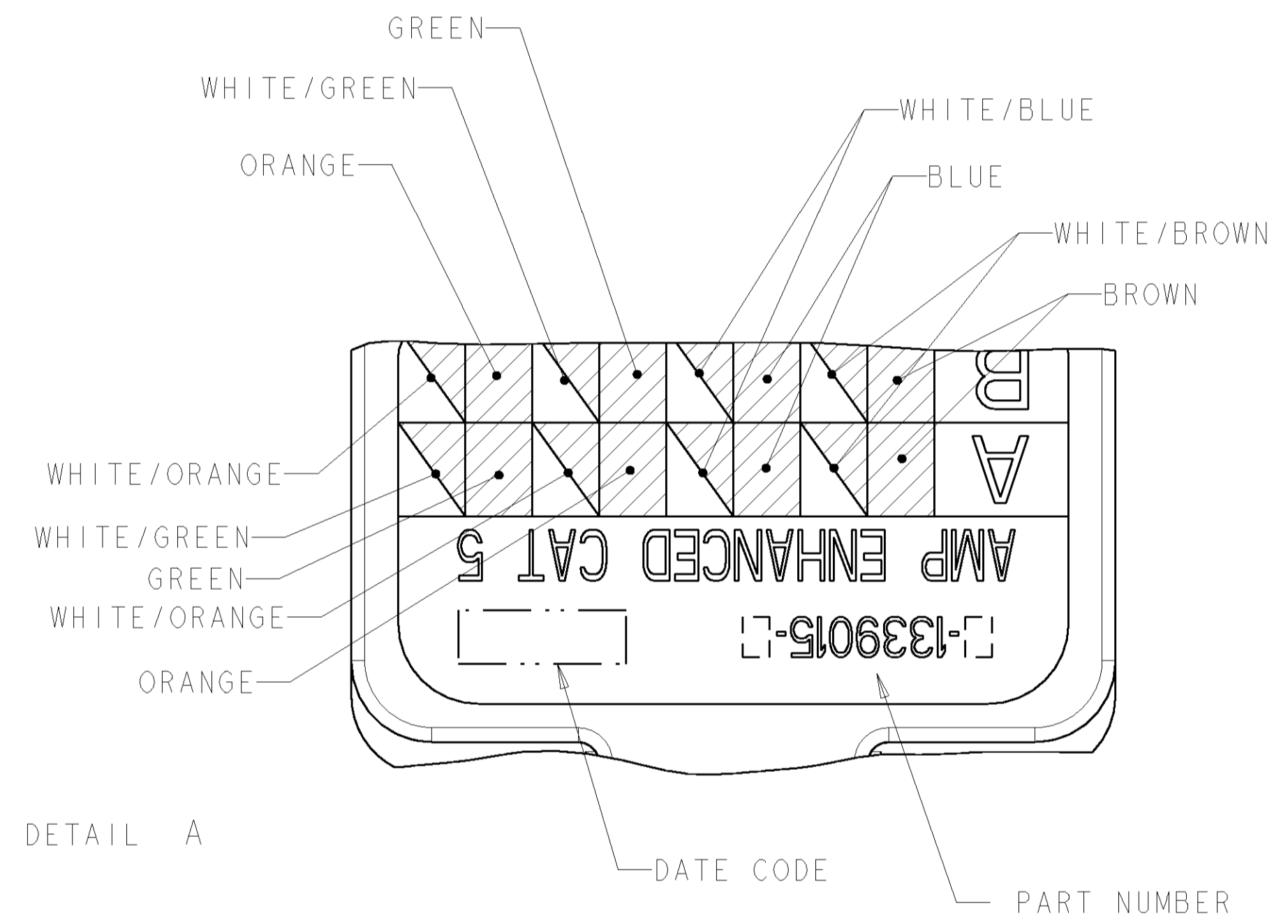
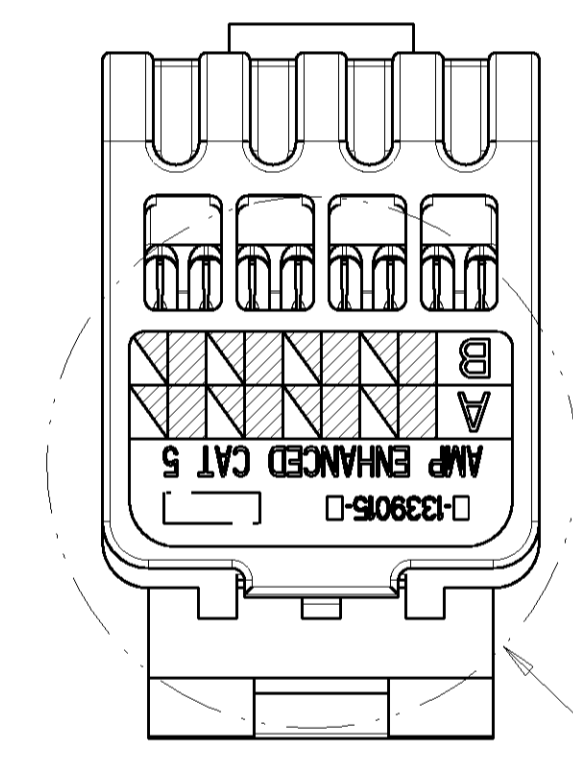
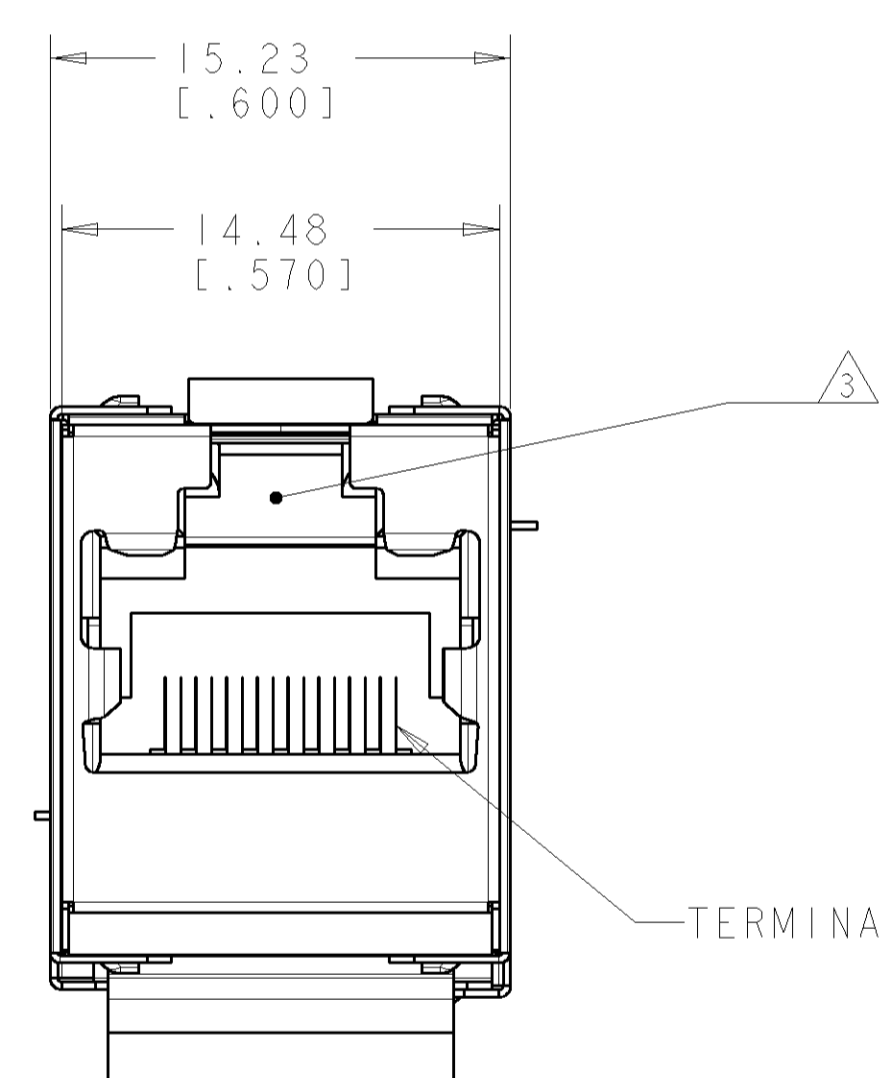
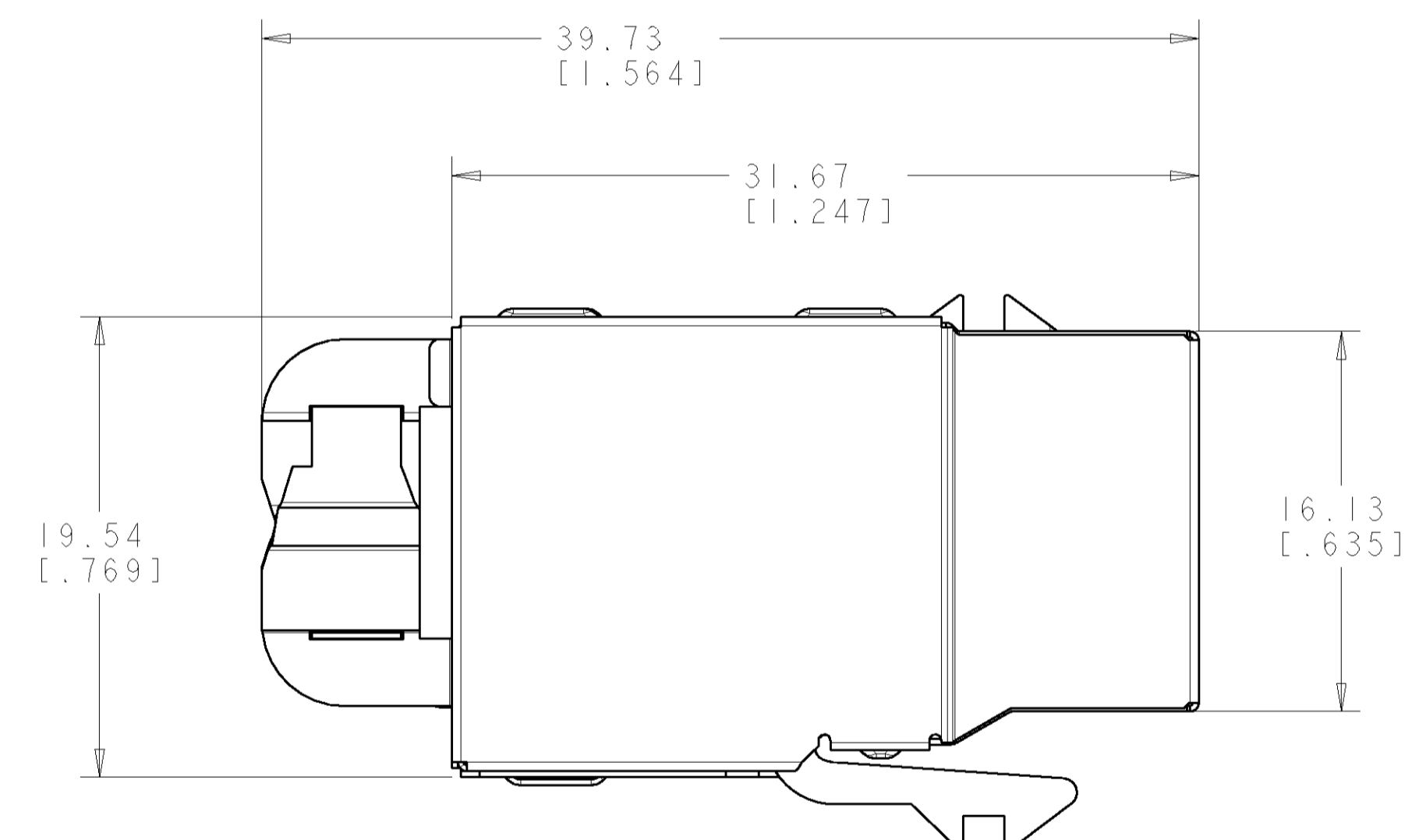
Address: A1208, Overseas Decoration Building, #122 Zhenhua RD., Futian, Shenzhen, China



LOC	DIST	REVISIONS					
		P	LTR	DESCRIPTION	DATE	DRN	APPR
HM	00	D1		REVISED PER ECO-11-005294	20APR11	RK	HMR



1. MATERIAL: JACK HOUSING - POLYPHENYLENE OXIDE, 94V-0 RATED.
 TERMINAL BLOCK - PBT POLYESTER, 94V-0 RATED.
 STUFFER CAP - POLYCARBONATE, CLEAR, 94V-0 RATED.
 JACK CONTACTS - PHOSPHOROUS BRONZE, PLATED WITH 1.27um [.000050] MINIMUM THICK GOLD IN LOCALIZED AREA AND 3.81um [.000150] MINIMUM THICK MATTE TIN IN SOLDER AREA OVER 1.27um [.000050] MINIMUM THICK NICKEL UNDERPLATE.
 SHIELD - COPPER ZINC ALLOY 260 PREPLATED WITH BRIGHT NICKEL
2. TOOLLESS WILL TERMINATE 22-24 AWG SOLID CONDUCTORS AND 24 AWG STRANDED CONDUCTORS, 1.14 [.045] MAXIMUM INSULATION DIAMETER.
3. CAVITY CONFORMS TO FCC RULES AND REGULATIONS PART 68 SUBPART F REQUIREMENTS.
4. MOUNTING PANEL THICKNESS 1.473 - 1.600 [.058 - .063].
5. THESE TWO SUGGESTED CUTOUT OPENINGS ARE USED IN TANDEM WITH DUAL FRONT AND BACK CUTOUTS.
6. SHIELD SHIPPED NOT ASSEMBLED.



VIEW SHOWING SHIELD ASSEMBLED

SEE DETAIL A

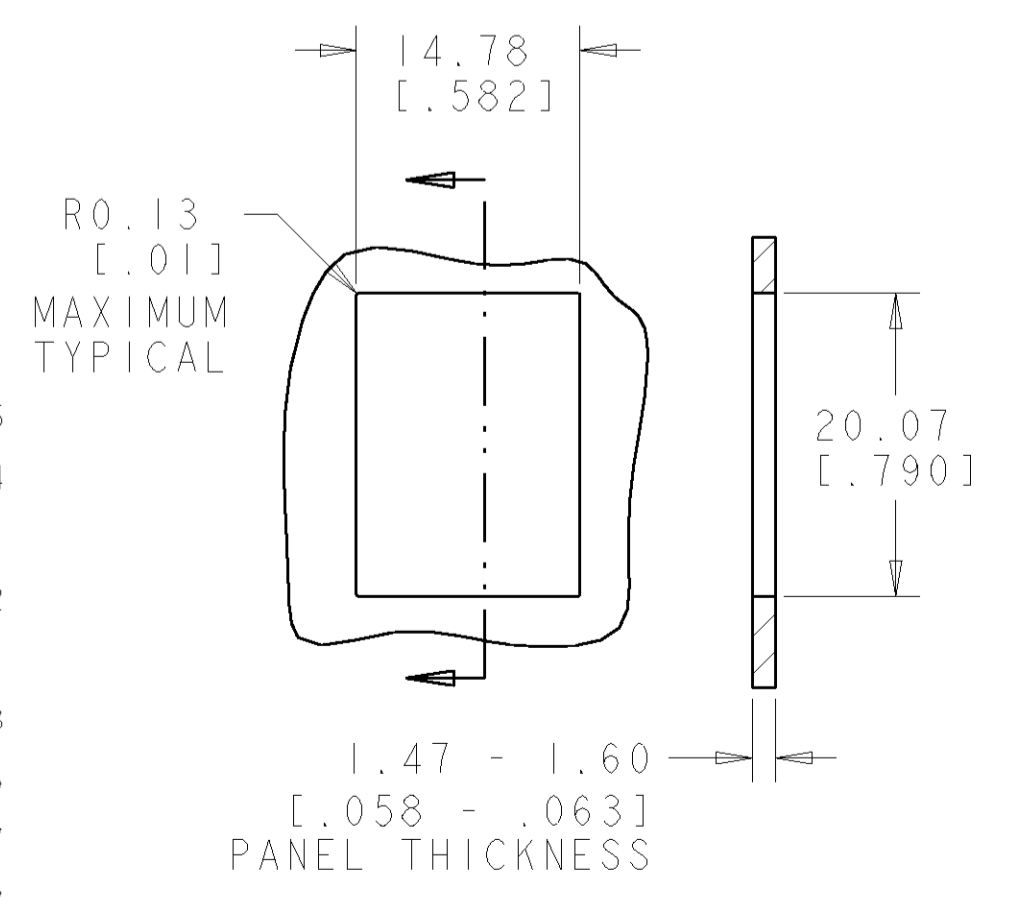
DETAIL A
SCALE 10:1

COLOR CODE	IDC TERMINAL	MODULAR JACK	
WHITE/BLUE			5
BLUE			4
WHITE/ORANGE			3
ORANGE			6
WHITE/GREEN			1
GREEN			2
WHITE/BROWN			7
BROWN			8

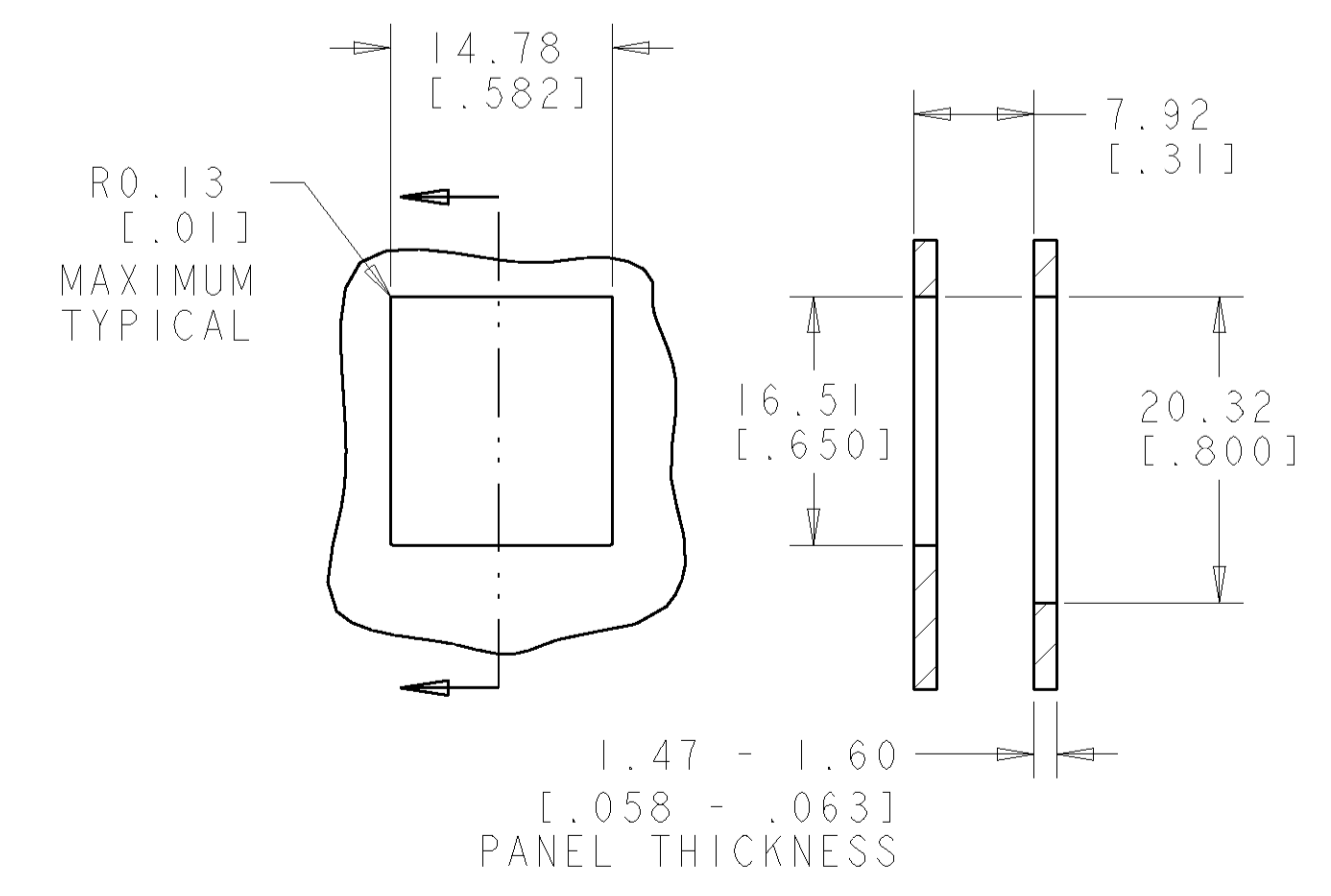
ELECTRICAL SCHEMATIC
T568A

COLOR CODE	IDC TERMINAL	MODULAR JACK	
WHITE/BLUE			5
BLUE			4
WHITE/ORANGE			1
ORANGE			2
WHITE/GREEN			3
GREEN			6
WHITE/BROWN			7
BROWN			8

ELECTRICAL SCHEMATIC
T568B



SINGLE PANEL CUTOUT



SUGGESTED FLUSH MOUNT
PANEL APPLICATION CUTOUT

1339015-1
PART NUMBER

DIMENSIONS: mm [INCHES]		TOLERANCES UNLESS OTHERWISE SPECIFIED:		DWG P. PEPE 22NOV99		CHK P. PEPE 22NOV99		APVD P. PEPE 22NOV99		NAME	
0 PLC ±		1 PLC ±.25 [.01]		PRODUCT SPEC		APPLICATION SPEC		SIZE		CAGE CODE DRAWING NO	
2 PLC ±.25 [.01]		3 PLC ±.13 [.005]		WEIGHT		SCALE		SHEET		OF	
4 PLC ±		FINISH		CUSTOMER DRAWING		A		00779		C=1339015	
MATERIAL		FINISH		SCALE		4:1		SHEET		REV D1	



ASSEMBLY, TOOLLESS, CAT 5e,
UNIVERSAL, RJ45, SHIELD