



Chipsmall Limited consists of a professional team with an average of over 10 year of expertise in the distribution of electronic components. Based in Hongkong, we have already established firm and mutual-benefit business relationships with customers from,Europe,America and south Asia,supplying obsolete and hard-to-find components to meet their specific needs.

With the principle of "Quality Parts,Customers Priority,Honest Operation,and Considerate Service",our business mainly focus on the distribution of electronic components. Line cards we deal with include Microchip,ALPS,ROHM,Xilinx,Pulse,ON,Everlight and Freescale. Main products comprise IC,Modules,Potentiometer,IC Socket,Relay,Connector.Our parts cover such applications as commercial,industrial, and automotives areas.

We are looking forward to setting up business relationship with you and hope to provide you with the best service and solution. Let us make a better world for our industry!



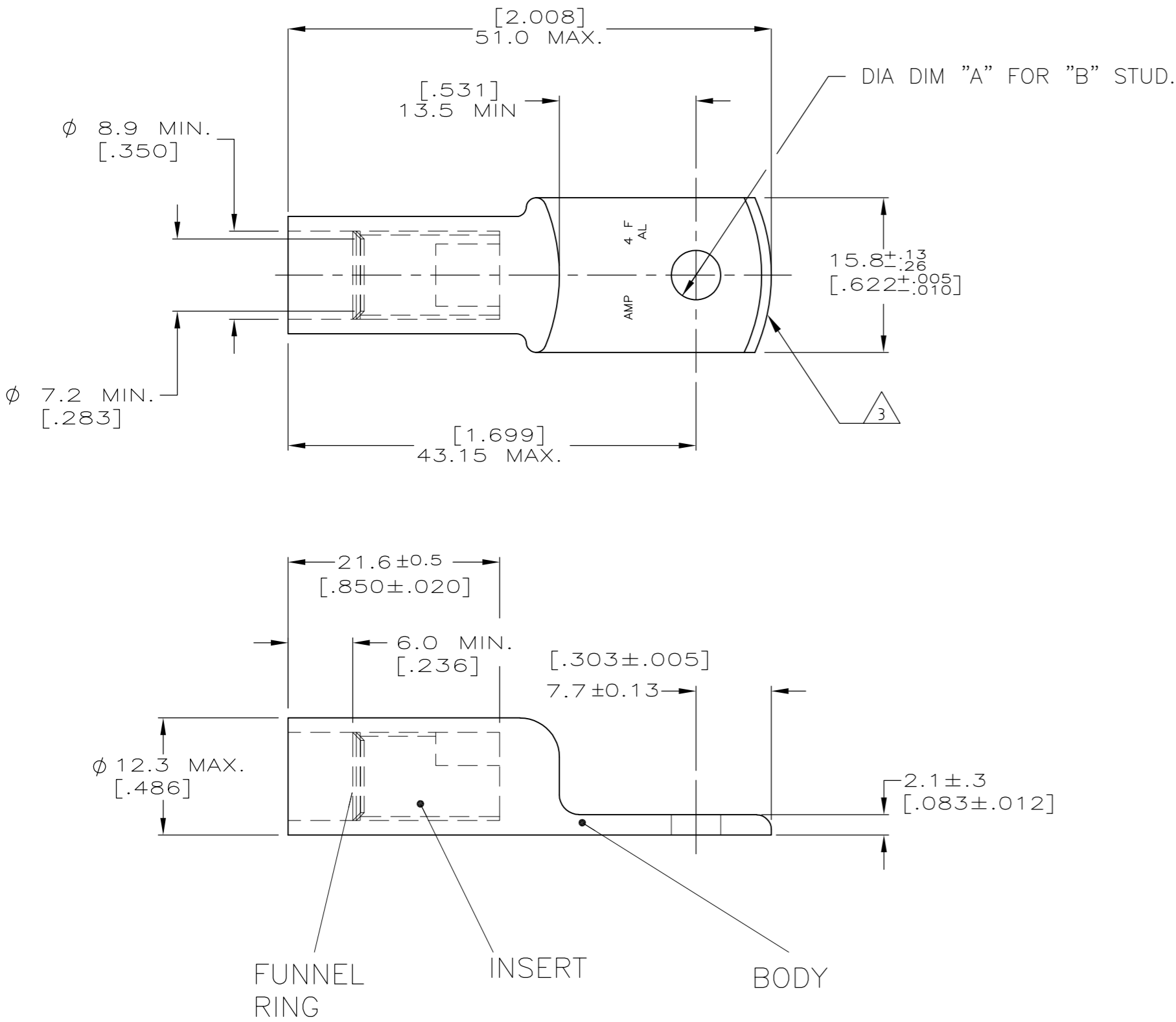
Contact us

Tel: +86-755-8981 8866 Fax: +86-755-8427 6832

Email & Skype: info@chipsmall.com Web: www.chipsmall.com

Address: A1208, Overseas Decoration Building, #122 Zhenhua RD., Futian, Shenzhen, China



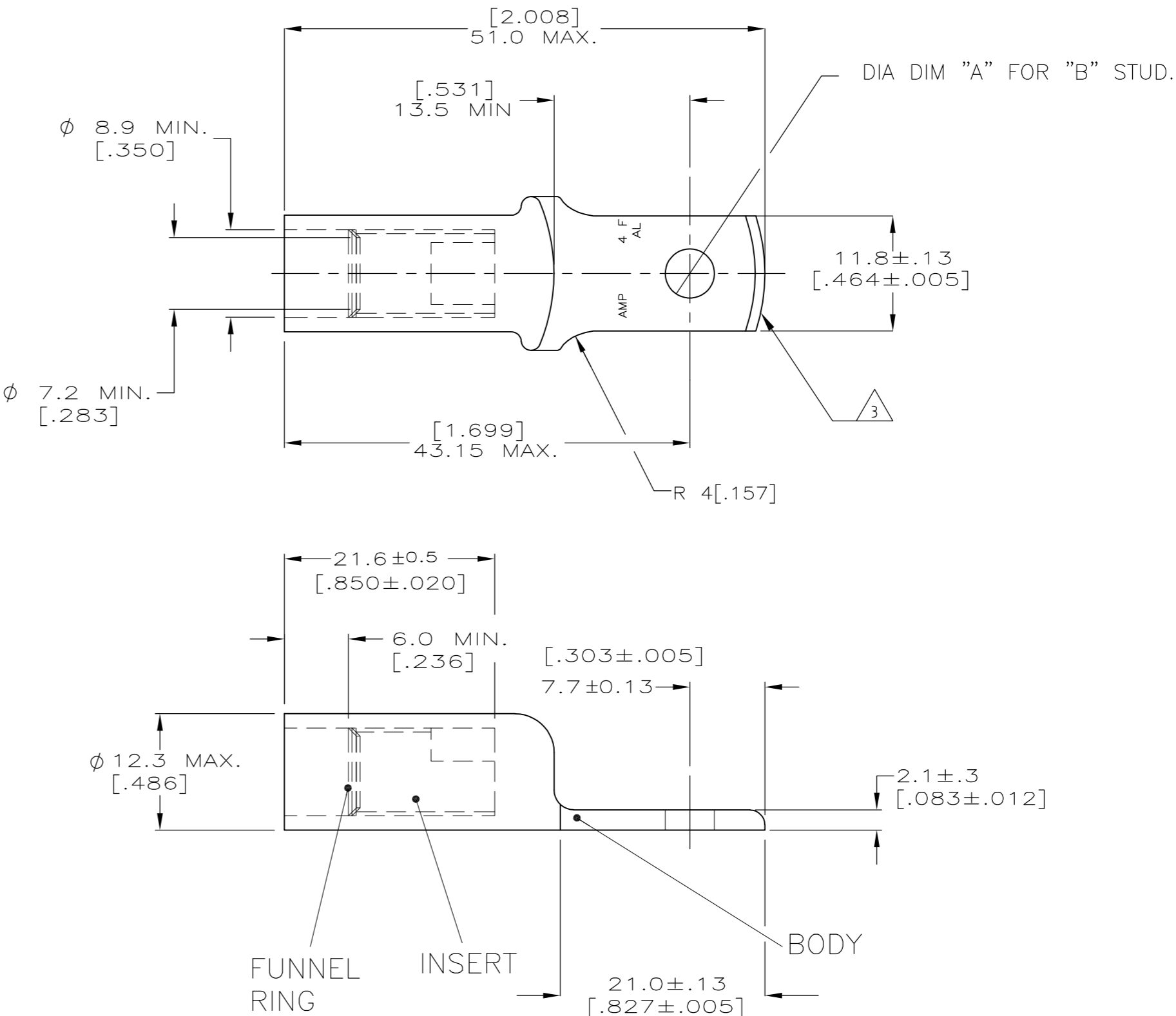


REFERENCE : 136059-1 — **OBSOLETE**

NOTES:

- 1: WIRE INSULATION: 7.01-7.75 [.276-.305]
- 2: WIRE CMA: 42331
- 3: THE TONGUE RADIUS FEATURE IS NOT A TOOLING CONTROLLED DIMENSION AND MAY NOT BE A TRUE RADIUS.

LOC	DIST	REVISIONS					
		P	LTR	DESCRIPTION	DATE	DWN	APVD
—	—		H	REVISED PER ECO-15-005573	05MAY15	KG	PD



REFERENCE : 136059-2

19.5 GRAMS	5.04+/- .04 [.198±.002]	10 or M5	BODY: COPPER ASTM-B187 ANNEALED TIN PLATE 0.00381[.000150] MIN THICK PER MIL-T-10727	136059-2
21 GRAMS	5.04+/- .04 [.198+/- .002]	10 or M5	INSERT & FUNNEL: BRASS ASTM B36 NICKEL PLATE SAM AMS QQ-N-290A, DATED JULY 2000,.00254 [.000100] MIN THICK	136059-1
WEIGHT	DIM A	B	MATERIAL & FINISH	PART NUMBER

DIMENS. FIL
21.4 mm² (Al)

ISOLANT
7.01/7.75

THIS DRAWING IS A CONTROLLED DOCUMENT.

DIMENSIONS:
mm [INCHES]

0 PLC ± -

1 PLC ± -

2 PLC ± -

3 PLC ± -

4 PLC ± -

ANGLES ± -

MATERIAL
VOIR TABLEAU

FINISH
VOIR TABLEAU

DWN
JJ DESPRETZ
CHK
G.ROBERT
APVD
-
PRODUCT SPEC
-
APPLICATION SPEC
-
WEIGHT
-
CUSTOMER DRAWING

09/92
16-JAN-97

NAME
SEALED COPALUM
-
-

SIZE
A2

CAGE CODE
00779

DRAWING NO
C=136059

RESTRICTED TO
-

SCALE
2:1

SHEET
1 OF 1

REV
H

1471-9 (3/11)