



Chipsmall Limited consists of a professional team with an average of over 10 year of expertise in the distribution of electronic components. Based in Hongkong, we have already established firm and mutual-benefit business relationships with customers from,Europe,America and south Asia,supplying obsolete and hard-to-find components to meet their specific needs.

With the principle of “Quality Parts,Customers Priority,Honest Operation,and Considerate Service”,our business mainly focus on the distribution of electronic components. Line cards we deal with include Microchip,ALPS,ROHM,Xilinx,Pulse,ON,Everlight and Freescale. Main products comprise IC,Modules,Potentiometer,IC Socket,Relay,Connector.Our parts cover such applications as commercial,industrial, and automotives areas.

We are looking forward to setting up business relationship with you and hope to provide you with the best service and solution. Let us make a better world for our industry!



Contact us

Tel: +86-755-8981 8866 Fax: +86-755-8427 6832

Email & Skype: info@chipsmall.com Web: www.chipsmall.com

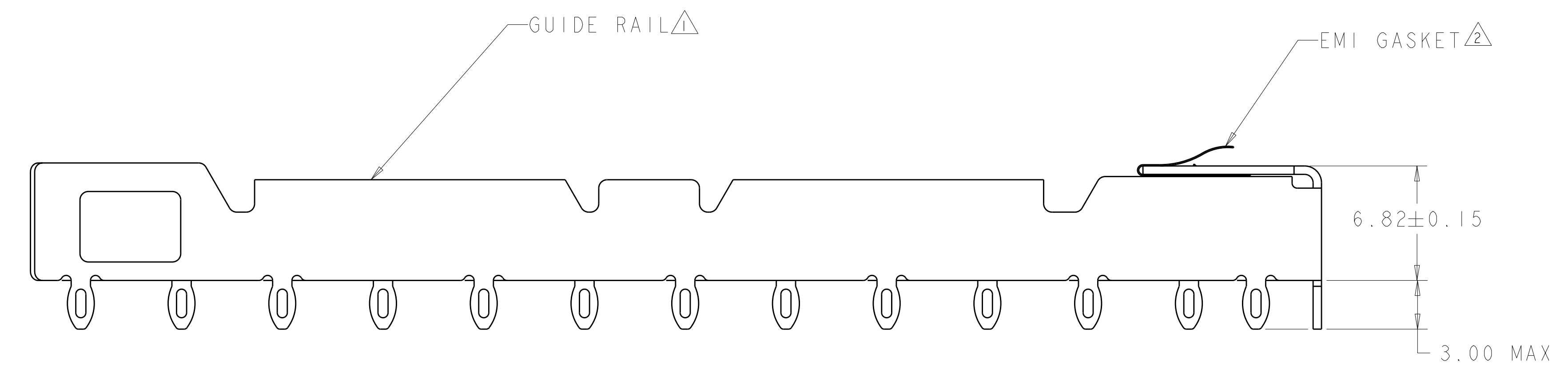
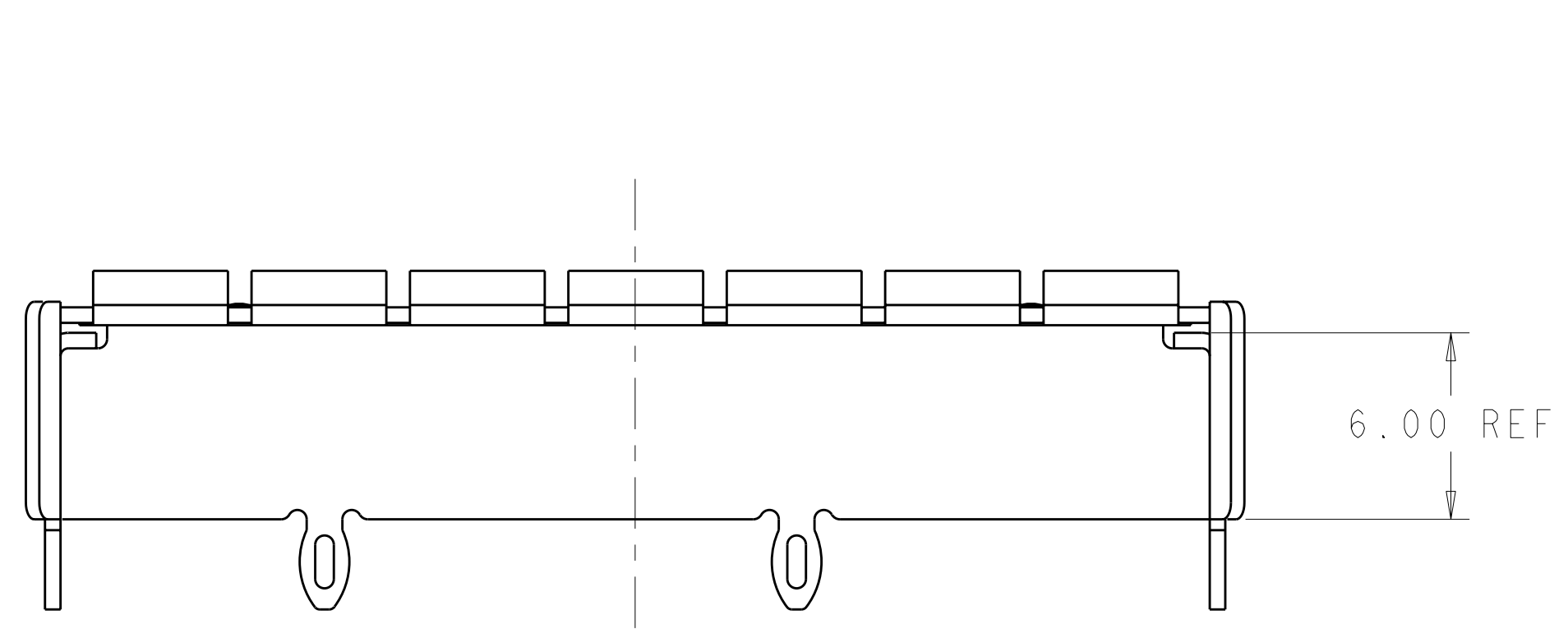
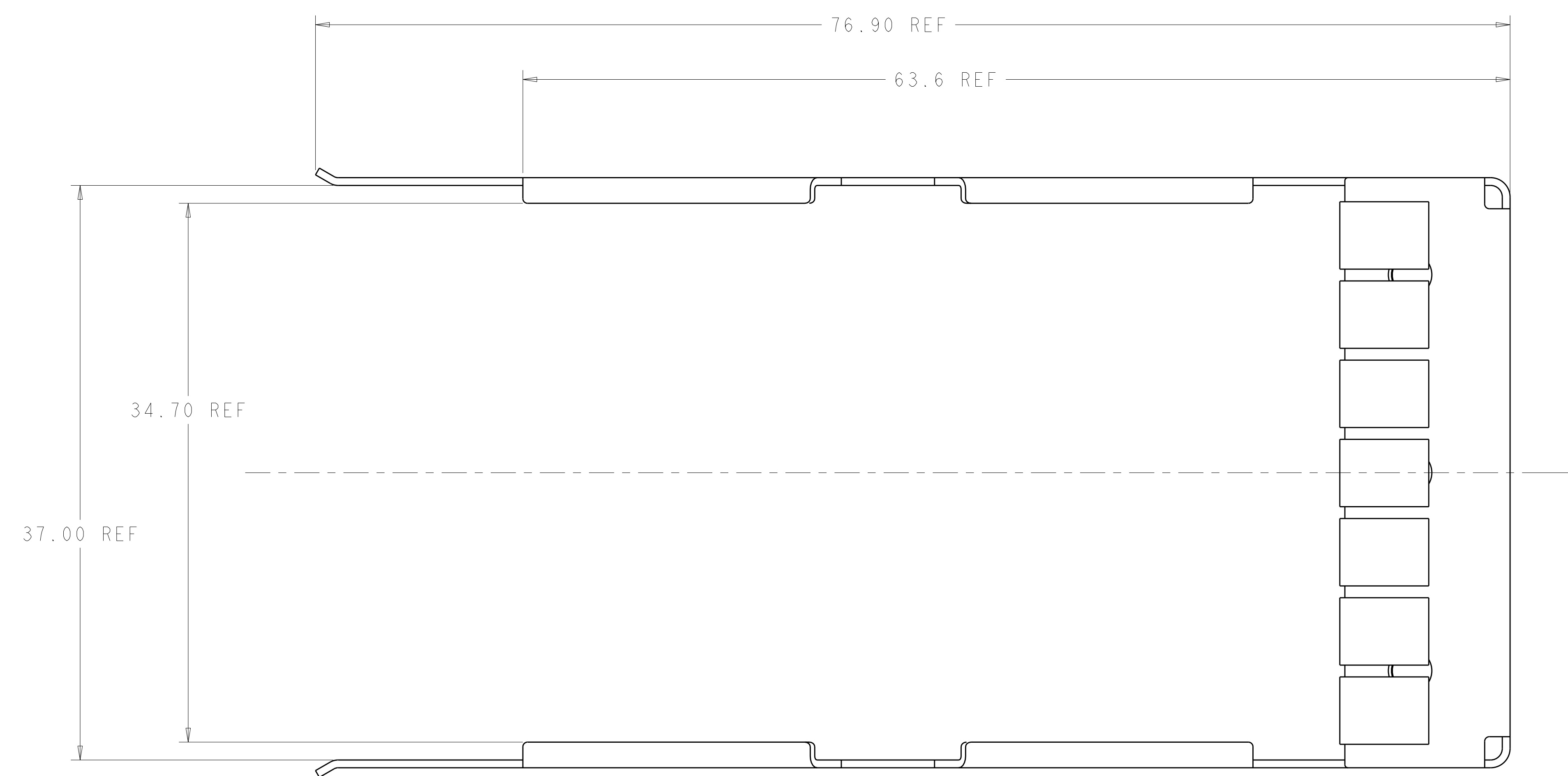
Address: A1208, Overseas Decoration Building, #122 Zhenhua RD., Futian, Shenzhen, China



| LOC | DIST | REV | DATE | BY | CHK | APPV |
|-----|------|-----|------|----|-----|------|
| AG | 00 | | | | | |

| REV | DATE | DESCRIPTION | DATE | BY | CHK | APPV |
|-----|-----------|------------------------------|------|----|-----|------|
| 5 | 11JUL2006 | Ø 1.55±0.02 WAS Ø 1.45 ±0.02 | | | | |
| A | 11APR07 | RELEASED PER ECO-07-007698 | | | | |

- △ GUIDE RAIL MATERIAL: COPPER ALLOY
 GUIDE RAIL FINISH: 0.4 MICROMETERS MIN THK TIN COATING
- △ EMI GASKET MATERIAL: COPPER ALLOY
 EMI GASKET PLATING: 2 MICROMETERS MIN THK TIN PLATE
- △ DATUMS X AND Y AND BSC DIMENSIONS TO BE ESTABLISHED BY CUSTOMER
- 4. DESIGN ACCEPTS MODULES THAT ARE COMPLIANT WITH X2 SPECIFICATION REV 2.0b
- △ SEE CUSTOMER DRAWING 1367337-1 FOR CONNECTOR PAD DIMENSIONS
- △ RECOMMENDATION FOR P.C. BOARD HOLES:
 COPPER UNDERPLATE, 25-50 MICROMETERS THICK, FOLLOWED BY ANY OF THESE SURFACE FINISHES:
 - A. HASL SnPb: 35 MICROMETERS MAX THK
 - B. GALVANIC Au: 4-5 MICROMETERS Ni + 0.1-0.5 MICROMETERS Au
 - C. OSP: 0.2-0.5 MICROMETERS THK
 - D. IMMERSION Sn: 0.5 MICROMETERS MIN THK
 - E. IMMERSION Au: 4-5 MICROMETERS Ni + 0.1-0.5 MICROMETERS Au
 - F. IMMERSION Ag: 0.1-0.3 MICROMETERS
- 7. BARE EDGES PERMITTED
- 8. 3.0 MIN PRINTED CIRCUIT BOARD THICKNESS FOR BELLY TO BELLY APPLICATION
- 9. BEZEL REQUIREMENTS PER X2 MSA
- 10. REFERENCE INSTRUCTION SHEET 408-8997 FOR ADDITIONAL INSTRUCTIONS.

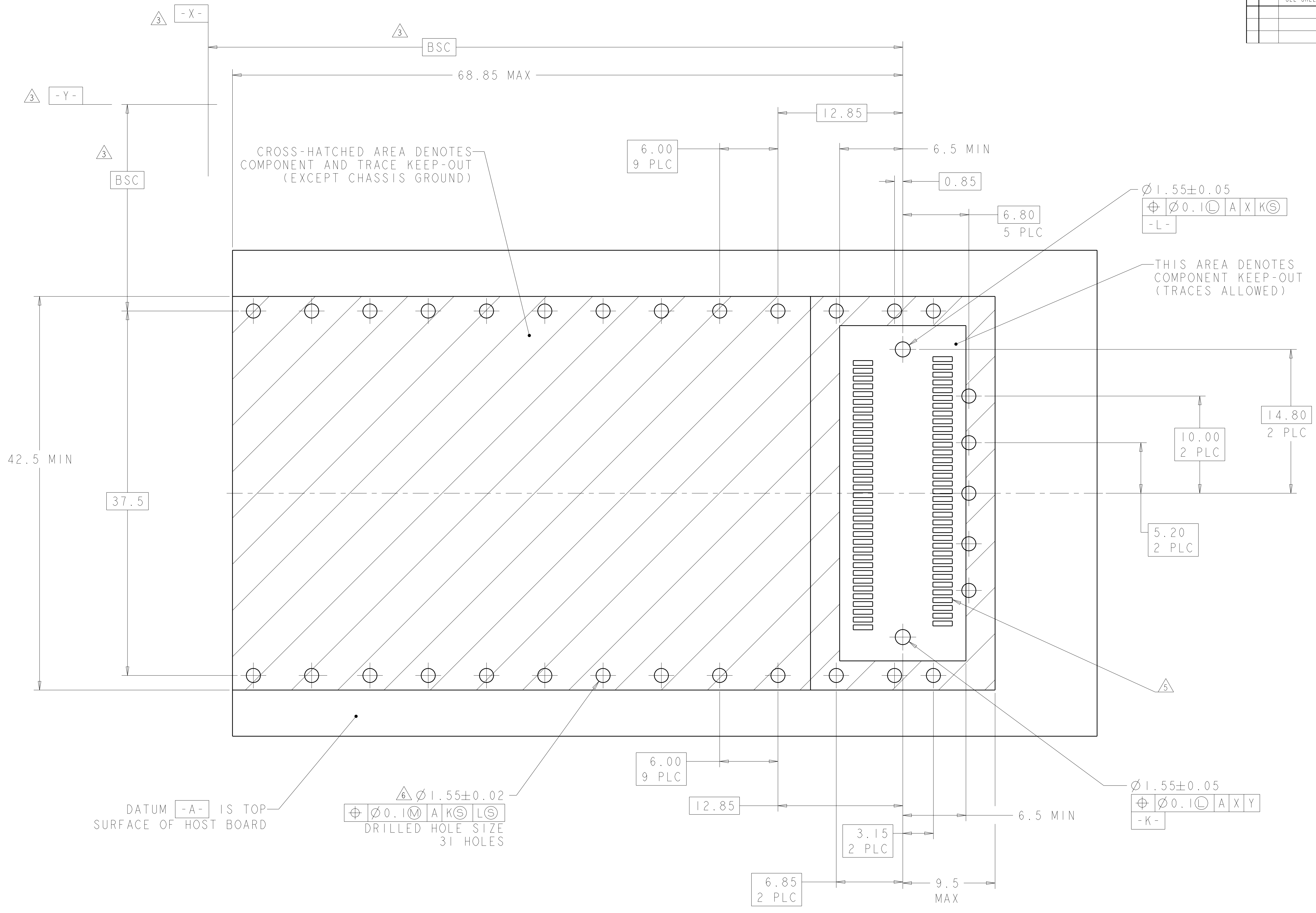


1367608-1
 PART NUMBER

| | | | | | | | |
|-----------------------|--|---|--|--|--|--|--|
| DIMENSIONS: mm | | TOLERANCES UNLESS OTHERWISE SPECIFIED: 9 PLC ±0.5 1 PLC ±0.2 5 PLC ±0.1 4 PLC ± ANGLES ± FINISH ± | | DWN P. KERLIN 04MAR2004 CHK E. BRIGHT 04MAR2004 APVD - NAME PRODUCT SPEC APPLICATION SPEC WEIGHT CUSTOMER DRAWING | | Tyco Electronics Harrisburg, PA 17105-3608 RAIL ASSY, GUIDE, X2 BELLY TO BELLY SIZE CAGE CODE DRAWING NO A 00779 C=1367608 SCALE 5:1 SHEET 1 OF 3 REV A | |
|-----------------------|--|---|--|--|--|--|--|

| LOC | DIST | REV | DATE | BY | APPD |
|-----|------|-----|------|----|------|
| AG | 00 | | | | |

| REVISIONS | | | |
|-----------|-------------|------|----|
| NO. | DESCRIPTION | DATE | BY |
| 1 | SEE SHEET 1 | | |

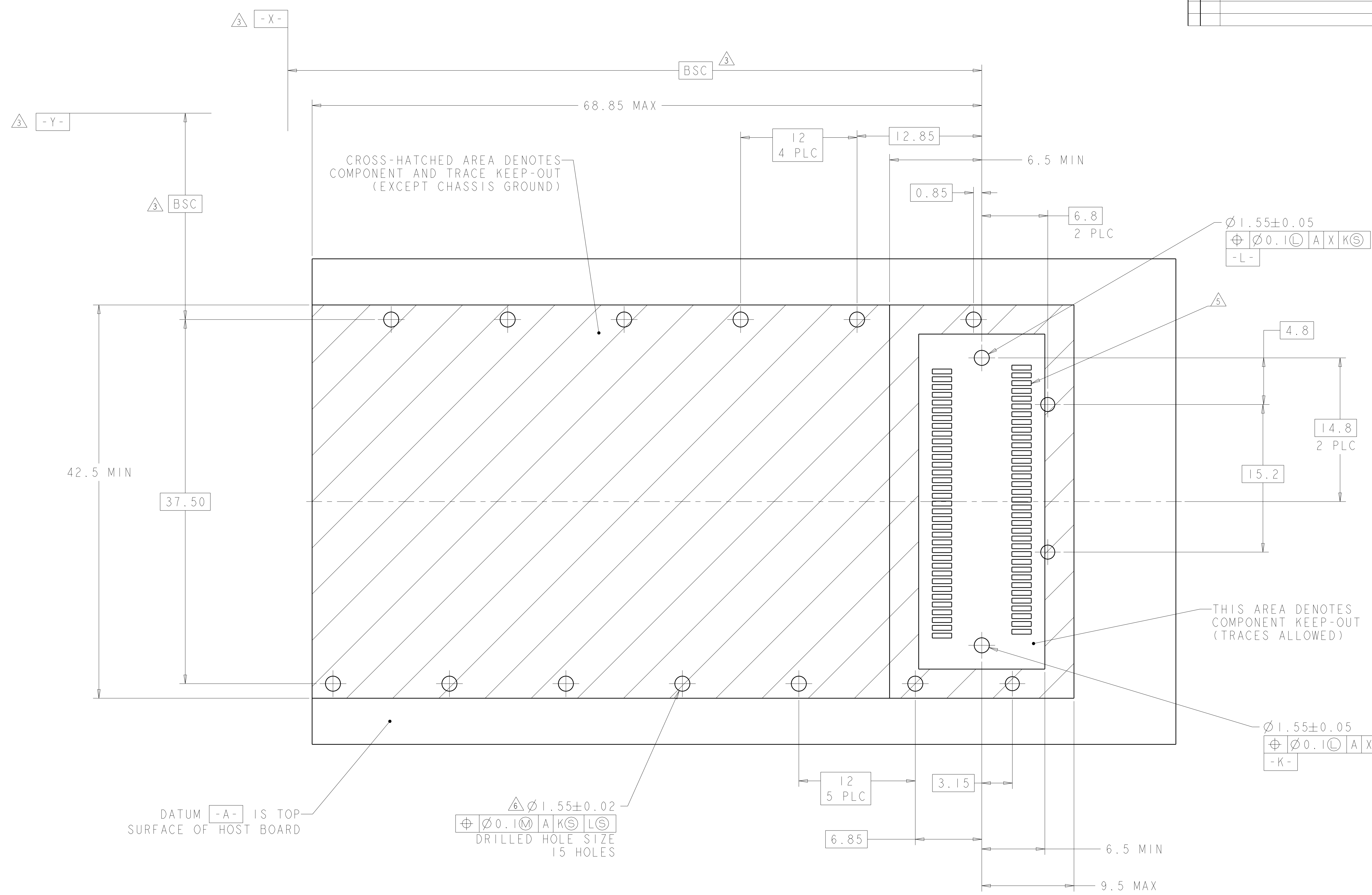


RECOMMENDED P.C. BOARD LAYOUT FOR BELLY TO BELLY X2

| | | | |
|--|---|--|--|
| <small>THIS DRAWING IS UNPUBLISHED. RELEASED FOR PUBLICATION. COPYRIGHT 20 BY TYCO ELECTRONICS CORPORATION. ALL RIGHTS RESERVED.</small> | | DWN: P. KERLIN 04MAR2004 CHK: E. BRIGHT 04MAR2004 APVD: - | tyco Electronics Tyco Electronics Harrisburg, PA 17105-3608 |
| DIMENSIONS: mm | TOLERANCES UNLESS OTHERWISE SPECIFIED: 9 PLC ± 0.5 1 PLC ± 0.2 2 PLC ± 0.1 3 PLC ± 0.1 4 PLC ± 0.1 ANGLES ± 0.1 FINISH - | PRODUCT SPEC - APPLICATION SPEC - WEIGHT - CUSTOMER DRAWING | NAME: RAIL ASSY, GUIDE, X2, BELLY TO BELLY SIZE: A 00779 C=1367608 SCALE: 5:1 SHEET 2 OF 3 REV A |

| LOC | DIST | REV | DATE | BY | APPD |
|-----|------|-----|------|----|------|
| AG | 00 | | | | |

| REVISIONS | | DATE | BY | APPD |
|-----------|-------------|------|----|------|
| 1 | SEE SHEET 1 | | | |



RECOMMENDED P.C. BOARD LAYOUT FOR SINGLE SIDE MOUNTED X2

| | | | |
|--|---|--|--|
| <small>THIS DRAWING IS UNPUBLISHED. RELEASED FOR PUBLICATION BY TYCO ELECTRONICS CORPORATION. ALL RIGHTS RESERVED.</small> | | DWN P. KERLIN 04MAR2004 CHK E. BRIGHT 04MAR2004 APVD - | tyco Electronics Tyco Electronics Harrisburg, PA 17105-3608 |
| DIMENSIONS: mm | TOLERANCES UNLESS OTHERWISE SPECIFIED: 9 PLC ±0.5 1 PLC ±0.2 5 PLC ±0.1 4 PLC ± ANGLES ± FINISH - | PRODUCT SPEC - APPLICATION SPEC - WEIGHT - CUSTOMER DRAWING | NAME RAIL ASSY, GUIDE, X2 BELLY TO BELLY SIZE CAGE CODE DRAWING NO RESTRICTED TO A 00779 C=1367608 - |
| AMP 4805 REV 31MAR2000 | | SCALE 5:1 | SHEET 3 OF 3 REV A |