



Chipsmall Limited consists of a professional team with an average of over 10 year of expertise in the distribution of electronic components. Based in Hongkong, we have already established firm and mutual-benefit business relationships with customers from,Europe,America and south Asia,supplying obsolete and hard-to-find components to meet their specific needs.

With the principle of “Quality Parts,Customers Priority,Honest Operation,and Considerate Service”,our business mainly focus on the distribution of electronic components. Line cards we deal with include Microchip,ALPS,ROHM,Xilinx,Pulse,ON,Everlight and Freescale. Main products comprise IC,Modules,Potentiometer,IC Socket,Relay,Connector.Our parts cover such applications as commercial,industrial, and automotives areas.

We are looking forward to setting up business relationship with you and hope to provide you with the best service and solution. Let us make a better world for our industry!



Contact us

Tel: +86-755-8981 8866 Fax: +86-755-8427 6832

Email & Skype: info@chipsmall.com Web: www.chipsmall.com

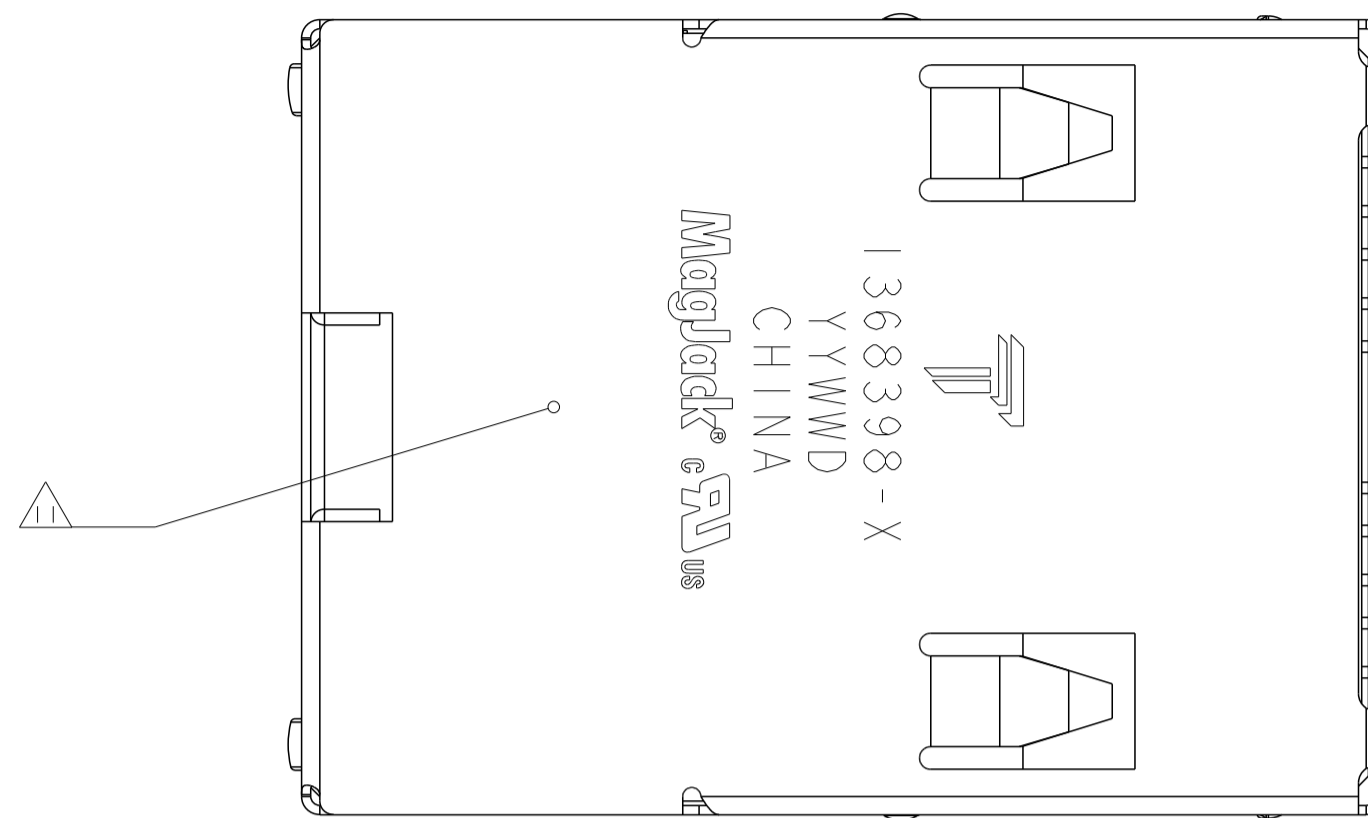
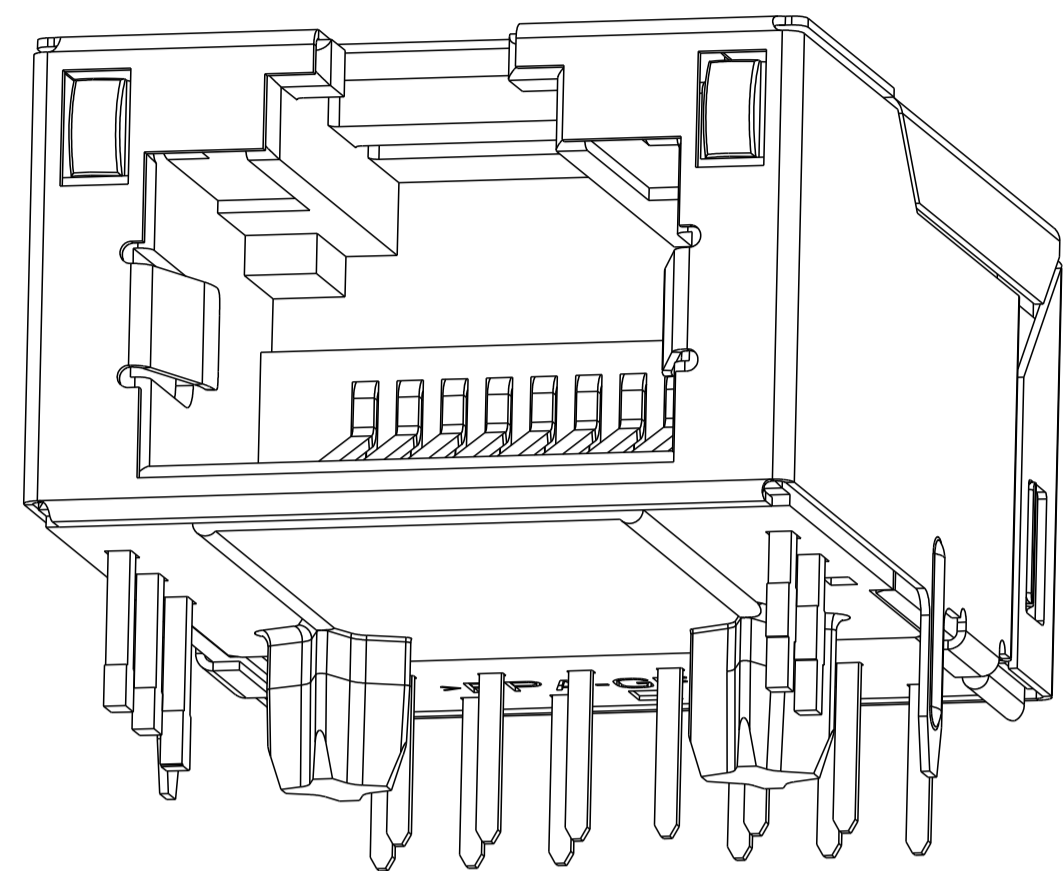
Address: A1208, Overseas Decoration Building, #122 Zhenhua RD., Futian, Shenzhen, China



THIS DRAWING AND THE SUBJECT MATTER SHOWN THEREON ARE CONFIDENTIAL AND THE PROPERTY OF BEL/STEWART/TRP CONNECTOR AND SHALL NOT BE REPRODUCED, COPIED, OR USED IN ANY MANNER WITHOUT THE WRITTEN CONSENT OF TRP CONNECTOR.

PRODUCT MAY BE PROTECTED BY ONE OR MORE OF THE FOLLOWING US PATENTS:
 5736910 5939955 6425781 6428361 6554638 6840817 7123117
 7429195 7717749 7808751 6217391 6149050 7924130

REVISIONS					
#	LTN	DESCRIPTION	DATE	OWN	APVD
R	EC-1306021		24JUN2013	TY	KZ
S	REVISED PER EC-1409018		22SEP2014	TYR	TYN
T	EC-1411035	COMPANY LOGO CHANGE	23DEC2014	TYR	TYN



1. MATERIALS:

- HOUSING: HIGH TEMPERATURE NYLON, BLACK, UL 94V-0
- SHIELD: 0.20mm THICK, BRASS PREPLATED WITH 1.27µm MIN SEMI-BRIGHT NICKEL; POST-DIPPED WITH 2µm MIN SAC ALLOY LEAD FREE SOLDER
- CONTACT TAILS: 0.25mm THICK, PHOSPHOR BRONZE, 1.27 µm MIN OVERALL NICKEL UNDERPLATE, 3µm MIN TIN PLATE
- MOD JACK CONTACTS: 0.25mm THICK, PHOSPHOR BRONZE, 1.27 µm MIN OVERALL NICKEL UNDERPLATE, WITH 0.76µm OR 1.27µm MIN LOCALIZED GOLD PLATE AT PLUG INTERFACE
- LIGHT EMITTING DIODE (LED): DIFFUSED EPOXY LENS, 0.5mm X 0.5mm CARBON STEEL WIREFRAME LEADS PREPLATED WITH 2.03µm MIN. SILVER PLATE OVER 1.02µm MIN. NICKEL OVER 1.02µm MIN. COPPER UNDERPLATE; LEADS POST-PLATED WITH 3.05µm MIN. MATTE TIN.
- LIGHT PIPE: POLYCARBONATE

② RJ45 JACK CAVITY CONFORMS TO FCC RULES AND REGULATIONS PART 68, SUB-PART F.

③ MAGNETICS:

- IMPEDANCE: 100 OHMS
- TRANSMIT OPEN CIRCUIT INDUCTANCE (OCL): 350µH (MIN) @100KHz,
- 0.1 VRMS WITH 8 mA DC BIAS.
- TURNS RATIO (CHIP:CABLE): TX 1:1, RX: 1:1

PERFORMANCE:

- TRANSMIT BIDIRECTIONAL ALL 4 PAIRS
- RECEIVE BIDIRECTIONAL ALL 4 PAIRS

FREQUENCY	INSERTION LOSS (dB MAX)	RETURN LOSS (dB MIN) CIRCUIT IMPEDANCE = 100 OHMS ±15%	COMMON MODE REJECTION RATIO (dB MIN)	CROSSTALK ATTENUATION (dB MIN)
0.5 MHz - 40.0 MHz	1.2	18.0	30	35
40.0 MHz - 100.0 MHz		12-20 log(f/80) f IS FREQUENCY IN MHZ		33-20 log(f/50) f IS FREQUENCY IN MHZ

ALL MAGNETIC ELECTRICAL CHARACTERISTICS RATED @ 25°C

DIELECTRIC (ISOLATION VOLTAGE):

- 2250 VDC (1 mA CUTOFF CURRENT) FOR 60 SECONDS DURATION BETWEEN CABLE CONTACTS AND PCB CONTACTS (INCLUDING SHIELD).
- 1500 VRMS (10 mA CUTOFF CURRENT) FOR 60 SECONDS DURATION BETWEEN CABLE CONTACTS AND PCB CONTACTS (INCLUDING SHIELD).
- ALL BRIDGED ON EITHER SIDE OF MAGNETICS PACKAGE FOR RJ-45 CONTACTS.
- OPERATING TEMPERATURE: FROM 0°C TO +70°C.

④ LED COMPLIANT WITH IEC60825-1 SAFETY OF LASER PRODUCTS. WHEN OPERATED UP TO 20mA.

⑤ LED PEAK WAVELENGTH: GREEN = 565±5nm
 YELLOW = 591±5nm
 ORANGE = 607±5nm

⑥ LED 2 WILL EMULATE "YELLOW" LIGHT WHEN BOTH GREEN AND ORANGE DIODES ARE DRIVEN AT CONSTANT CURRENT (20 mA RECOMMENDED) TO INDICATE THE THIRD COLOR STATES.

⑦ ALL DIMENSIONS NOMINAL UNLESS OTHERWISE NOTED.

8. 1368398-1 SHOWN UNLESS OTHERWISE NOTED.

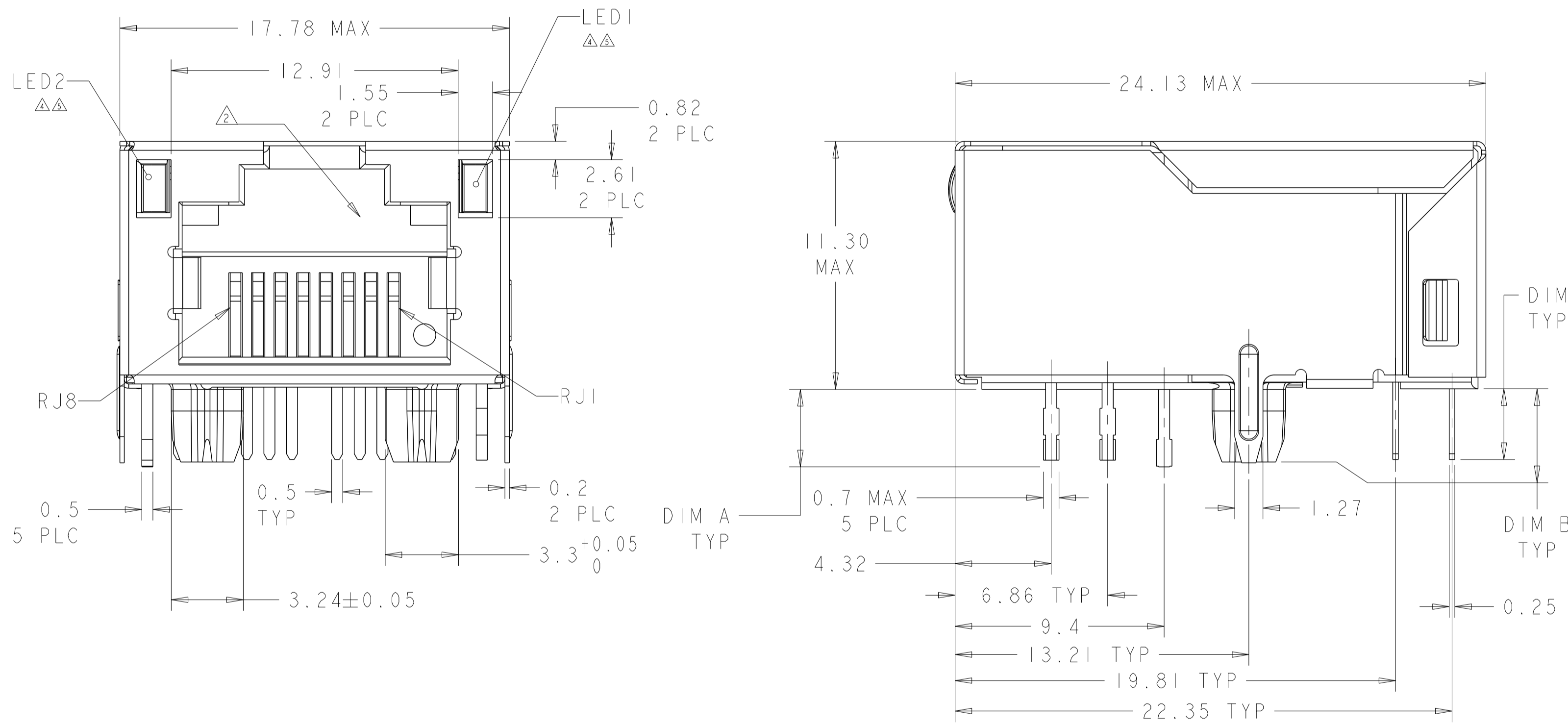
⑨ RJ45 MOD PLUG SELECTIVE - THIS CONNECTOR UTILIZES STAINLESS STEEL SPRING MEMBER WHICH PREVENTS THE INSERTION OF A RJ11 (6 POSITION) PLUG INTO THE JACK PORT, WHILE ALLOWING A RJ45 (8 POSITION) PLUG TO MATE FREELY.
 WARNING: THIS FEATURE WAS DEVELOPED FOR TYPICAL PLUG INSERTION FORCES. EXCESSIVE INSERTION FORCE MAY OVERCOME THE SELECTIVE FEATURES AND DAMAGE THE CONNECTOR.

⑩ APPLIES ONLY TO 1368398-3/4/7/8, 1-1368398-3 AND 2-1368398-3.

⑪ TRP CONNECTOR LOGO, PART NUMBER, DATE CODE, PLACE OF ORIGIN TO BE MARKED IN APPROXIMATE LOCATION AS SHOWN. DATE CODE: "YY" IS YEAR, "WW" IS WORK WEEK, "D" IS DAY OF WEEK, WITH SUNDAY=1

⑫ PART SHOULD BE COMPLIANT TO WAVE SOLDERING PROCESS ONLY, PREHEAT TEMPERATURE IS 120°C TO 160°C, 120 SECONDS TO 180 SECONDS, PEAK SOLDERING TEMPERATURE IS 260°C MAX, 10 SECONDS MAX.

⑬ PART SHOULD BE COMPLIANT TO BOTH WAVE SOLDERING PROCESS, PREHEAT TEMPERATURE IS 120°C TO 160°C, 120 SECONDS TO 180 SECONDS, PEAK SOLDERING TEMPERATURE IS 260°C MAX, 10 SECONDS MAX, AND IR REFLOW SOLDERING PROCESS, PEAK SOLDERING TEMPERATURE 260°C MAX, DURATION TIME 10 SECONDS MAX, OVER 230°C WITHIN 40-60 SECONDS.



BOTH	③	TRAY	0.76µm	YELLOW	GREEN/ORANGE	⑥	YES	TOP AND SIDES	1.8	1.8	2-1368398-3
WAVE	⑫	TRAY	0.76µm	GREEN/YELLOW	GREEN		YES	NO	3.3	3.18	1-1368398-6
WAVE	⑫	TRAY	0.76µm	YELLOW	GREEN/ORANGE	⑥	YES	TOP AND SIDES	1.8	1.8	1-1368398-3
WAVE	⑫	TRAY	1.27µm	YELLOW	GREEN/ORANGE	⑥	NO	TOP AND SIDES	3.3	3.18	1368398-8
WAVE	⑫	TRAY	0.76µm	GREEN	GREEN/ORANGE	⑥	YES	TOP AND SIDES	3.3	3.18	1368398-7
WAVE	⑫	TRAY	0.76µm	YELLOW	GREEN/ORANGE	⑥	NO	TOP ONLY	3.3	3.18	1368398-6
BOTH	③	TAPE & REEL	0.76µm	YELLOW	GREEN/ORANGE	⑥	YES	NO	1.8	1.8	1368398-5
WAVE	⑫	TRAY	0.76µm	YELLOW	GREEN/ORANGE	⑥	YES	TOP AND SIDES	3.3	3.18	1368398-4
BOTH	③	TAPE & REEL	0.76µm	YELLOW	GREEN/ORANGE	⑥	YES	TOP AND SIDES	1.8	1.8	1368398-3
BOTH	③	TAPE & REEL	0.76µm	YELLOW	GREEN/ORANGE	⑥	YES	TOP ONLY	1.8	1.8	1368398-2
WAVE	⑫	TRAY	0.76µm	YELLOW	GREEN/ORANGE	⑥	NO	NO	3.3	3.18	1368398-1
SOLDER PROCESS		PACKAGE METHOD	GOLD PLATING THICKNESS	LED 1	LED 2		RJ11 SELECTIVE CAPABILITY	GROUND TABS	DIM B	DIM A	PART NO.

THIS DRAWING IS A CONTROLLED DOCUMENT.

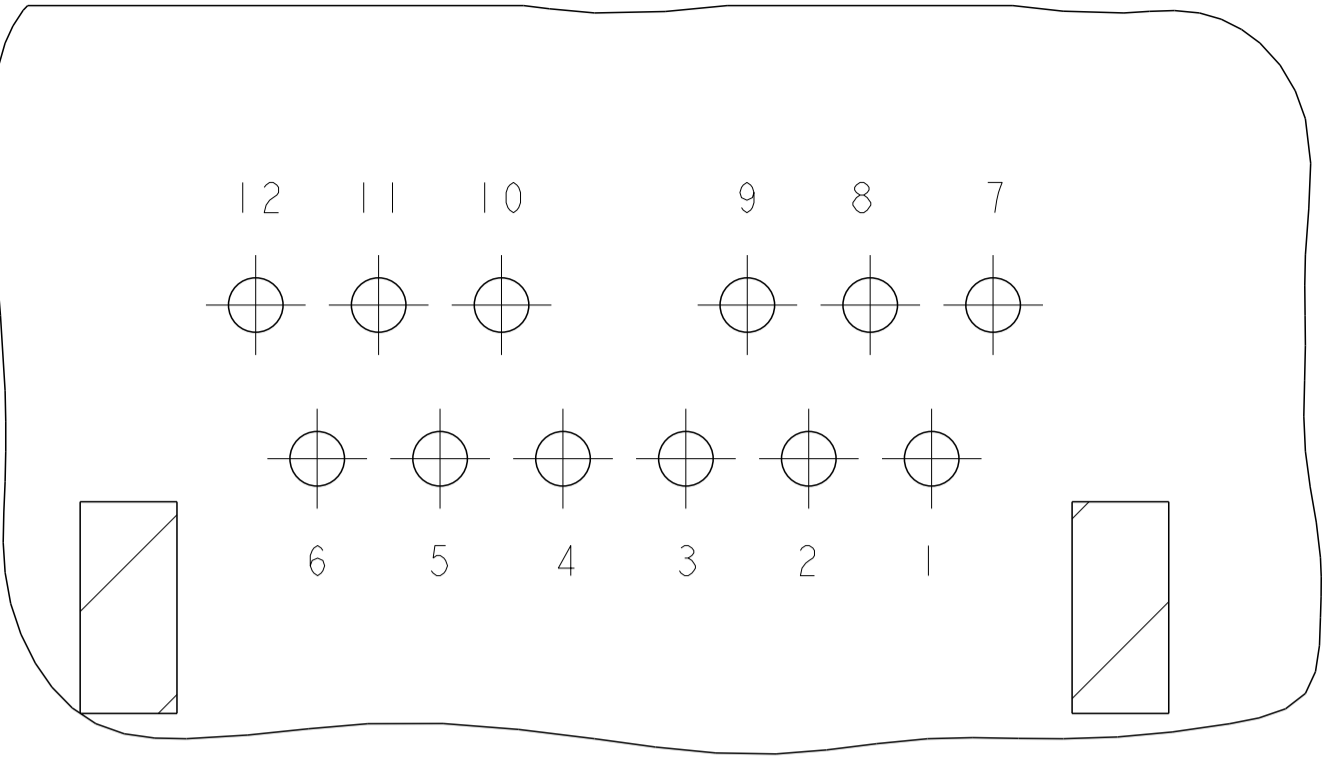
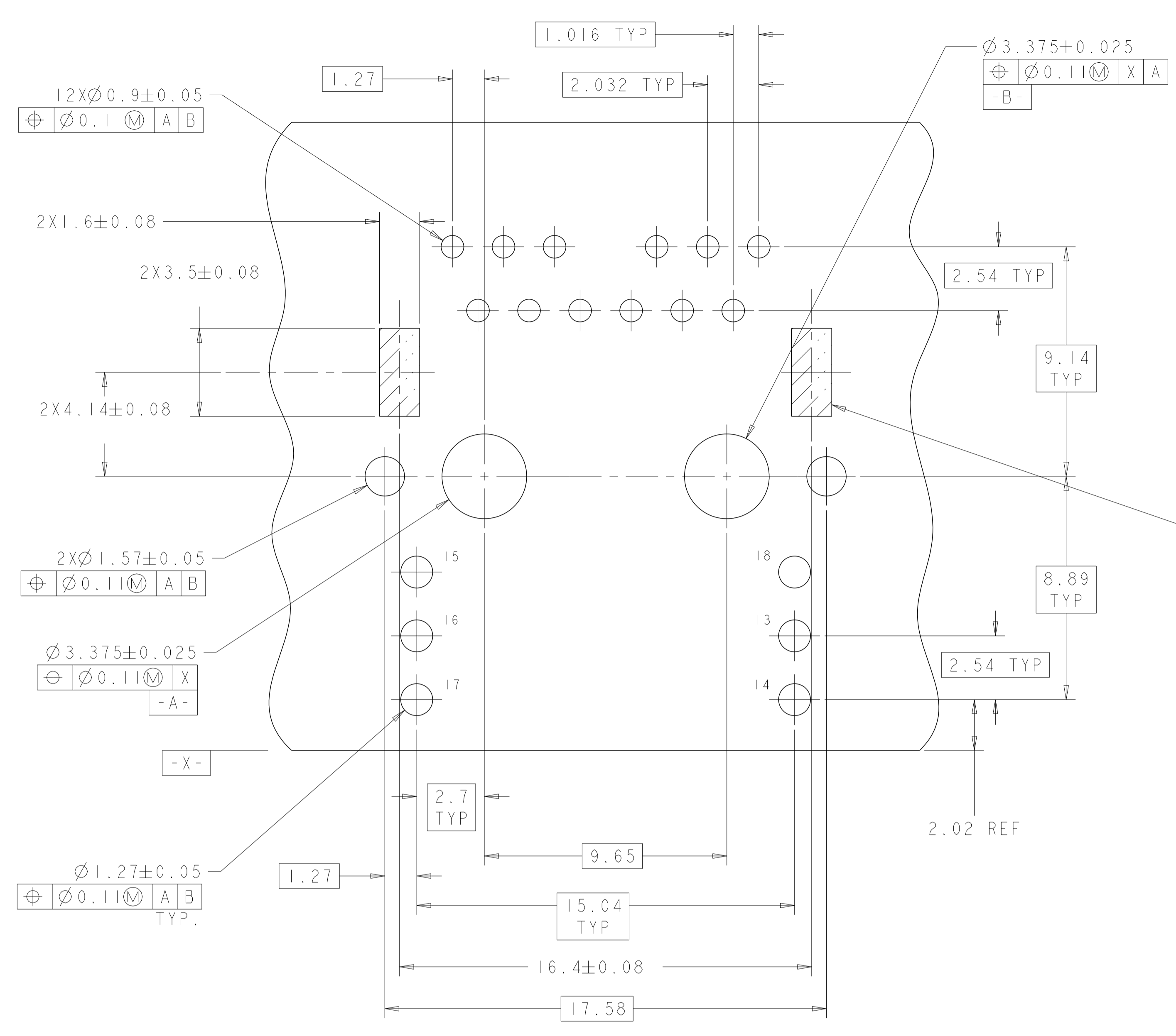
OWN: ERIC BRIANT 15MAY2003
 CHG: N. REESER 9FEB2004
 APVD: N. REESER 9FEB2004

DIMENSIONS: mm
 TOLERANCES UNLESS OTHERWISE SPECIFIED:
 0 PLC ±0.25
 1 PLC ±0.25
 2 PLC ±0.25
 3 PLC ±0.25
 4 PLC ±
 ANGLES ±
 APPLICATION SPEC ±

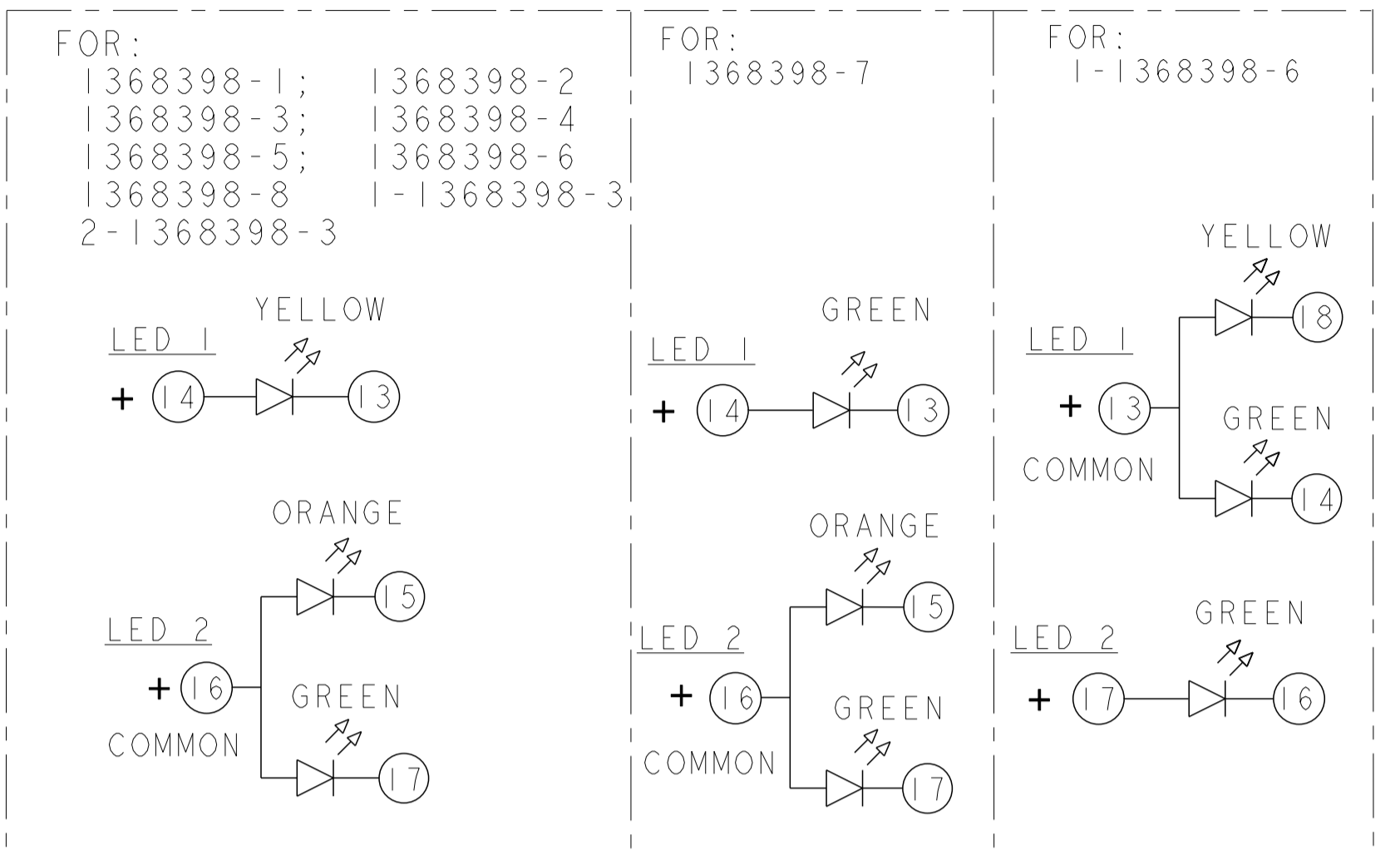
MODEL NAME: MAGJACK
 DESC: IXI IG18 GIGABIT TAB UP LOW PROFILE W/ LED
 SIZE: A1
 CAGE CODE: C=1368398
 DRAWING NO: 108-2207
 CUSTOMER DRAWING

trp CONNECTOR
 a bel group
 DONGGUAN CHINA

SCALE: 4:1 SHEET 1 OF 3 REV T



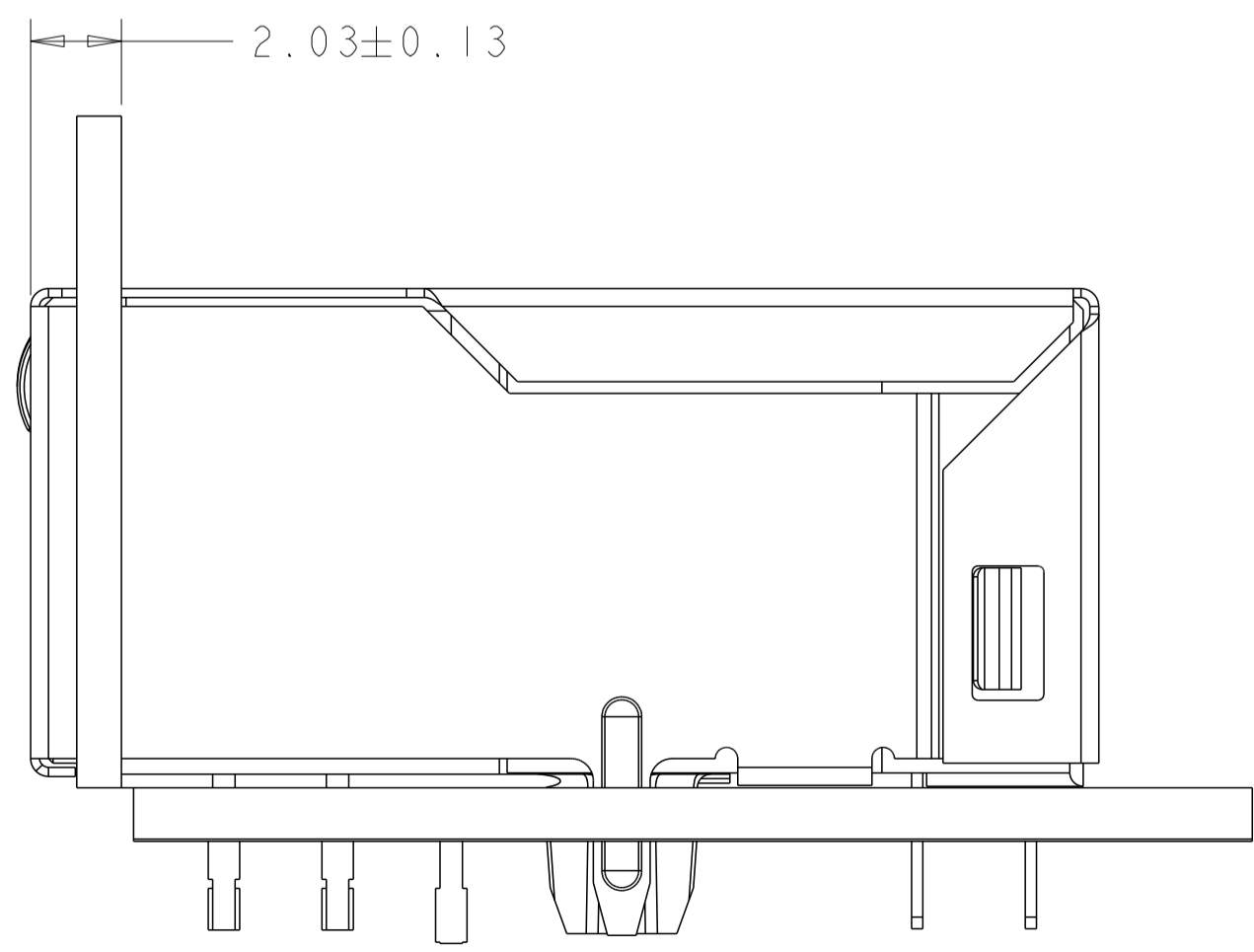
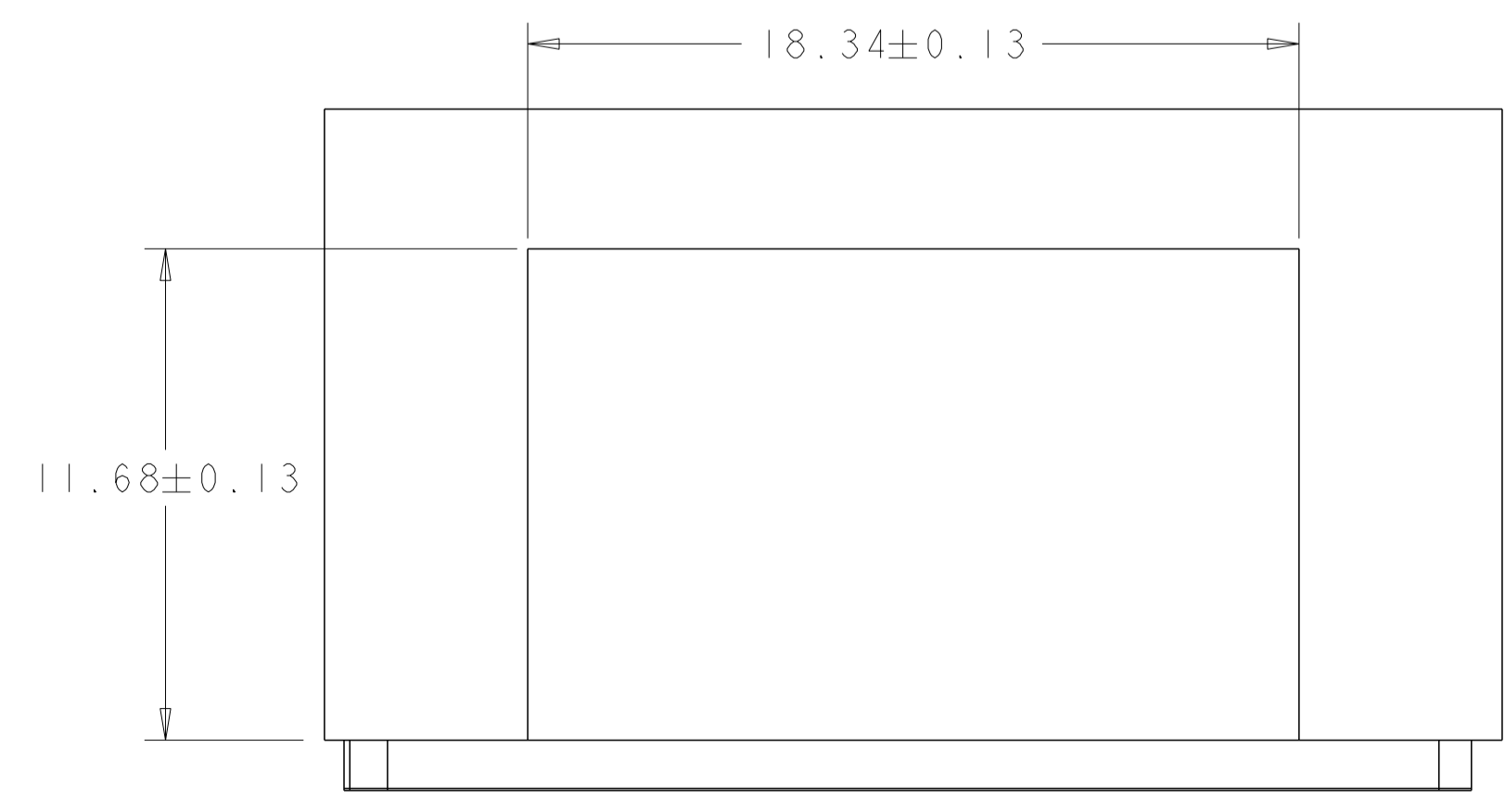
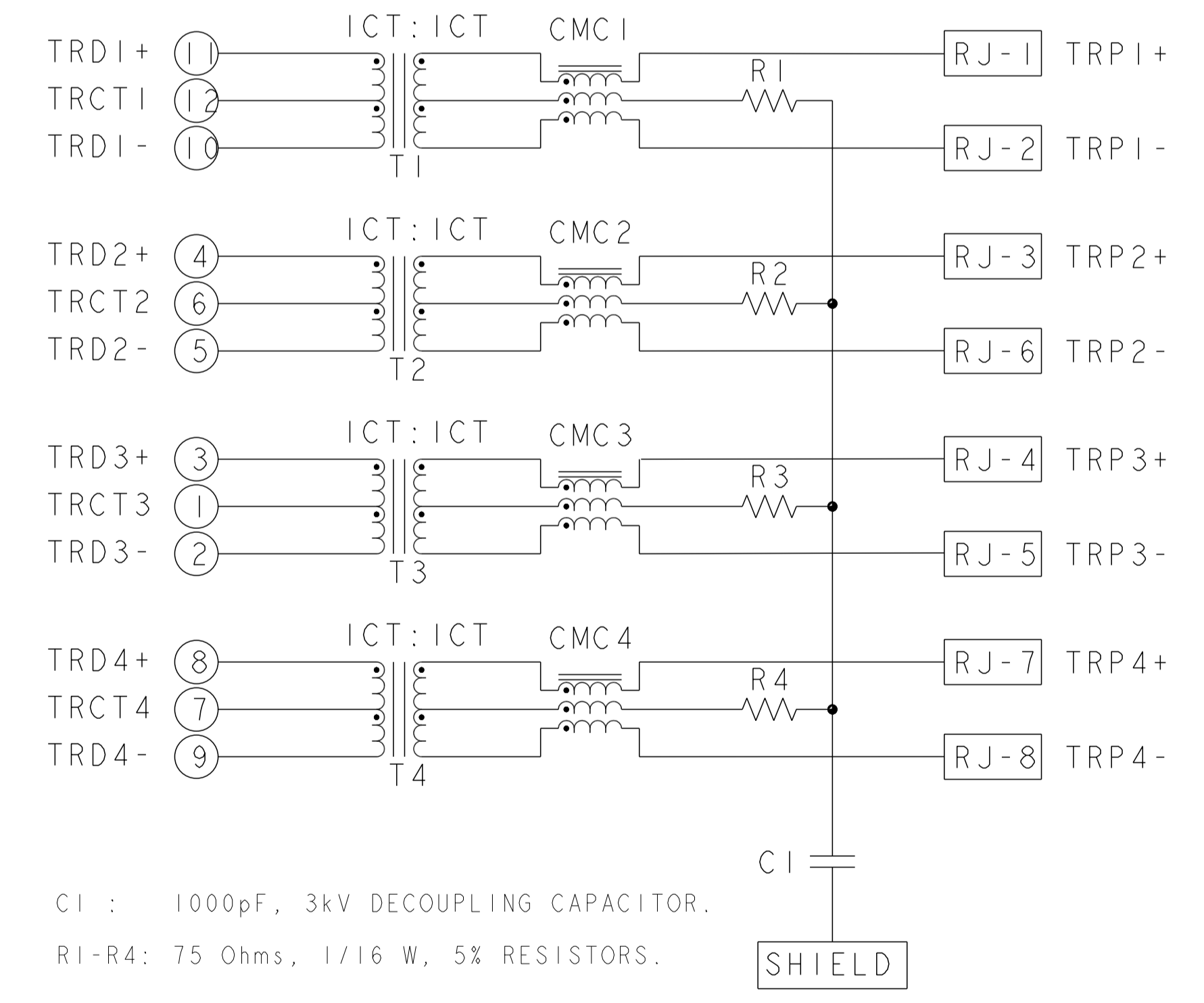
PIN DESIGNATIONS



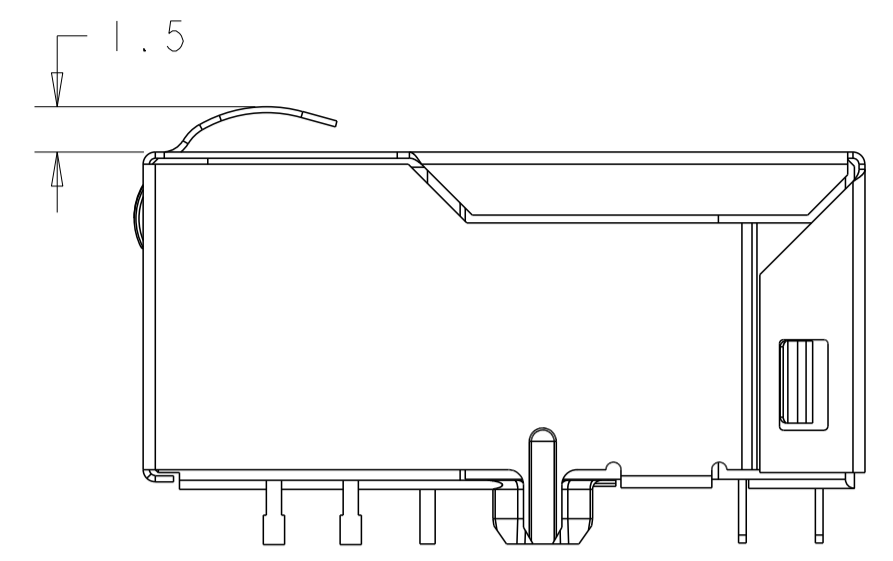
IT IS RECOMMENDED THAT SHADED AREA OF CUSTOMER PC BOARD BE CLEAR OF ANY VIA HOLE, COMPONENT AND CIRCUIT TRACE

SUGGESTED PCB LAYOUT (COMPONENT SIDE)

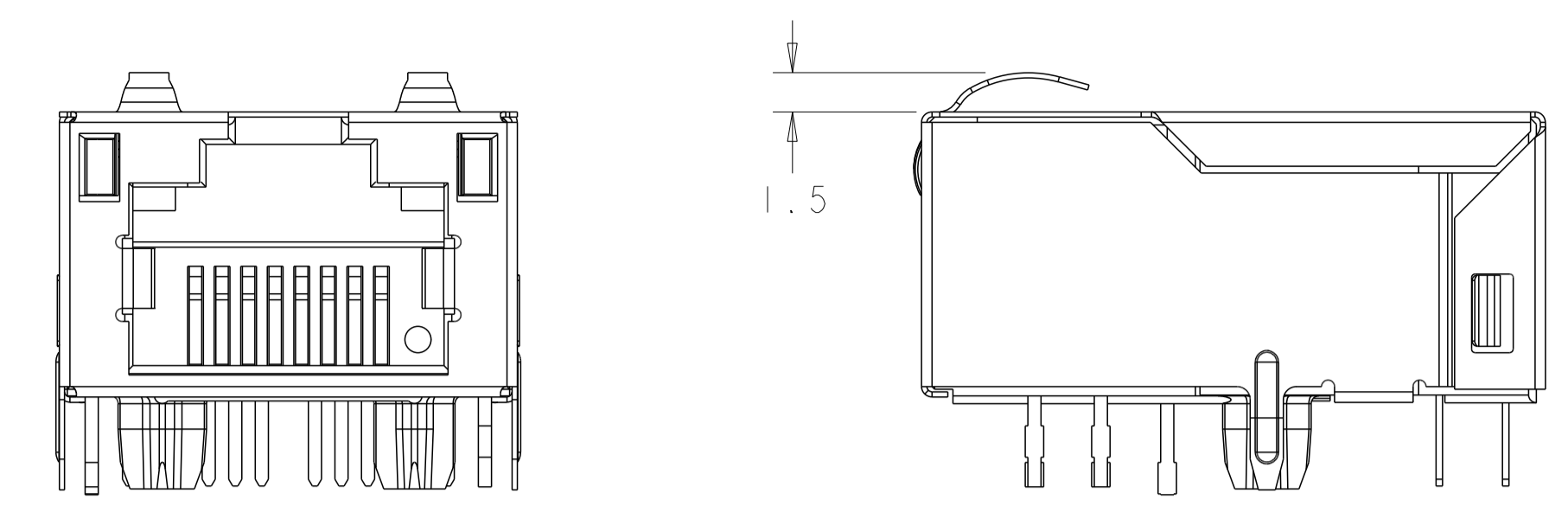
IG18 GIGABIT CIRCUIT



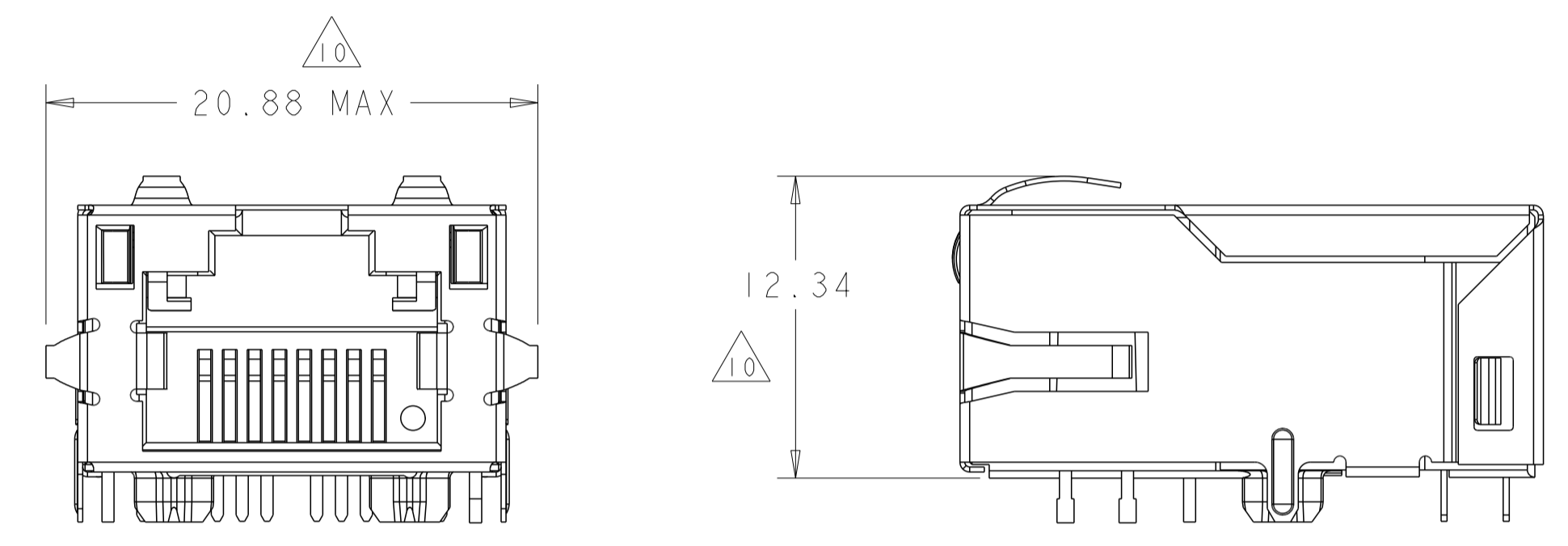
THIS DRAWING IS A CONTROLLED DOCUMENT.		OWN: ERIC BRIANT 15MAY2003	DONGGUAN CHINA
DIMENSIONS: mm		CHK: N. REESER 9FEB2004	
TOLERANCES UNLESS OTHERWISE SPECIFIED:		APVD: N. REESER 9FEB2004	DESC: IX1 IG18 GIGABIT TAB UP LOW PROFILE W/ LED
0 PLC ±0.25	1 PLC ±0.25	MODEL NAME: MAGJACK	SIZE: A1
2 PLC ±0.25	3 PLC ±0.25	PRODUCT SPEC: SINGLE NON-POE	SCALE: 4:1
4 PLC ±	ANGLES ±	APPLICATION SPEC: -	SHEET 2 OF 3
PRODUCT SPEC: 108-2207		CUSTOMER DRAWING	REV T



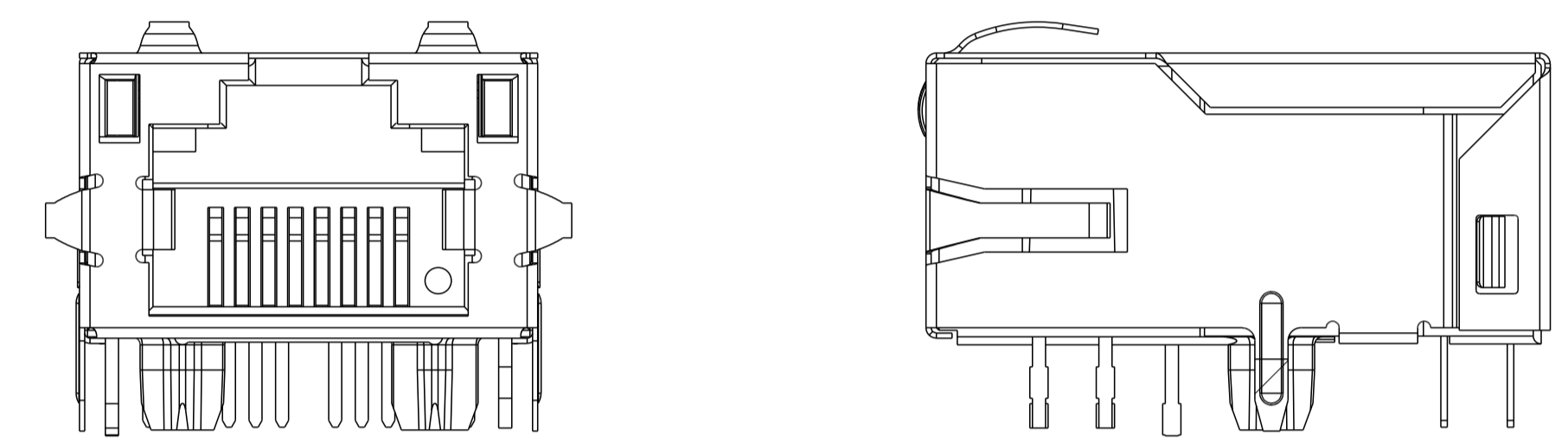
1368398-2



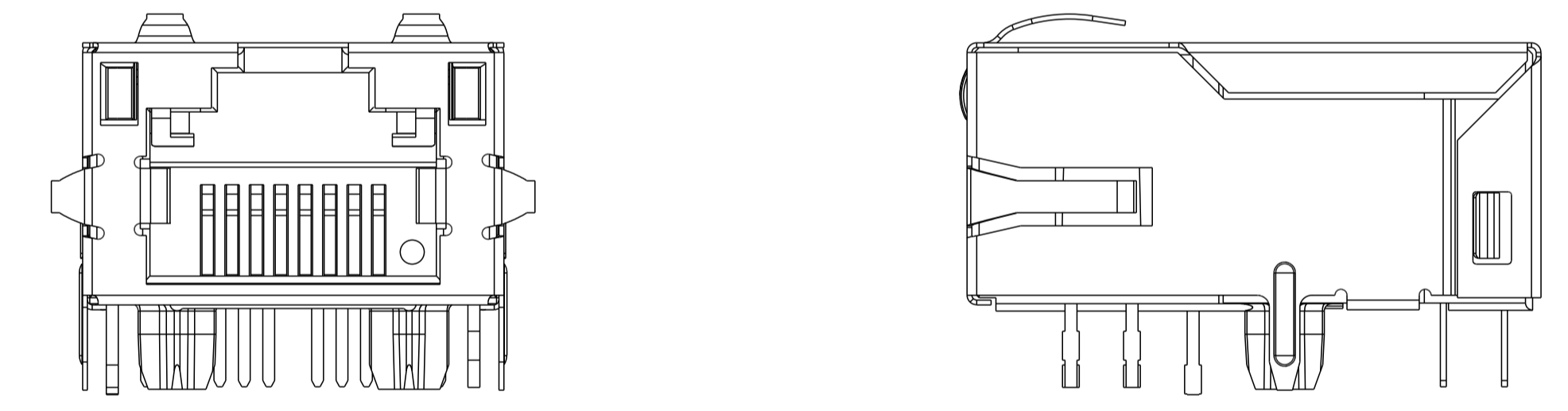
1368398-6



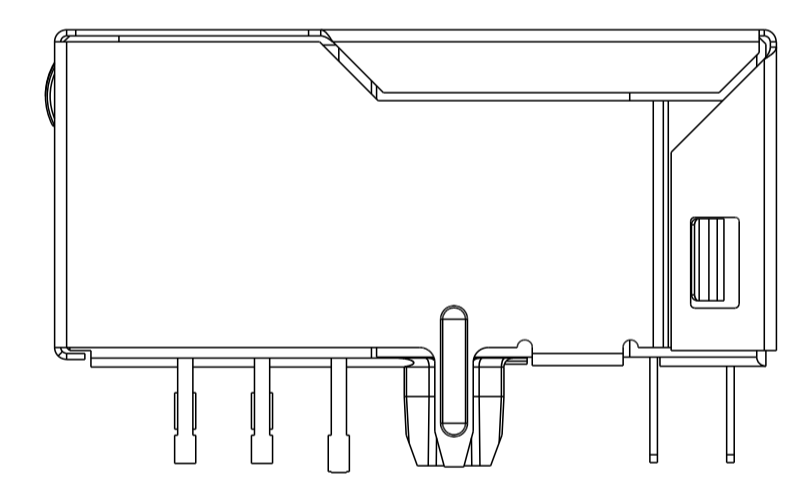
1368398-3, 1-1368398-3, 2-1368398-3



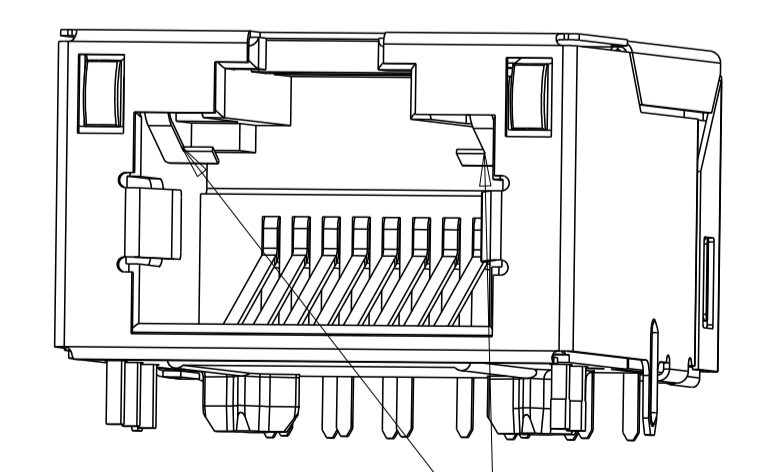
1368398-8 (WITHOUT RJ II SELECTIVE SPRING MEMBER)



1368398-4 & 1368398-7



1-1368398-6



1368398-5
 RJ45 MOD PLUG
 SELECTIVE SS
 SPRING MEMBER

THIS DRAWING IS A CONTROLLED DOCUMENT.		OWN ERIC BRIANT 15MAY2003	DONGGUAN CHINA
DIMENSIONS: mm		CHK N. REESER 9FEB2004	
0 PLC ±0.25 1 PLC ±0.25 2 PLC ±0.25 3 PLC ± 4 PLC ± ANGLES ± APPLICATION SPEC ±		MODEL NAME MAGJACK DESC IXI 1G18 GIGABIT TAB UP LOW PROFILE W/ LED SIZE CAGE CODE DRAWING NO RESTRICTED TO A1 C=1368398 - PRODUCT SPEC 108-2207 APPLICATION SPEC - CUSTOMER DRAWING	
SCALE 4:1		SHEET 3 OF 3	REV T