



Chipsmall Limited consists of a professional team with an average of over 10 year of expertise in the distribution of electronic components. Based in Hongkong, we have already established firm and mutual-benefit business relationships with customers from,Europe,America and south Asia,supplying obsolete and hard-to-find components to meet their specific needs.

With the principle of "Quality Parts,Customers Priority,Honest Operation,and Considerate Service",our business mainly focus on the distribution of electronic components. Line cards we deal with include Microchip,ALPS,ROHM,Xilinx,Pulse,ON,Everlight and Freescale. Main products comprise IC,Modules,Potentiometer,IC Socket,Relay,Connector.Our parts cover such applications as commercial,industrial, and automotives areas.

We are looking forward to setting up business relationship with you and hope to provide you with the best service and solution. Let us make a better world for our industry!



## Contact us

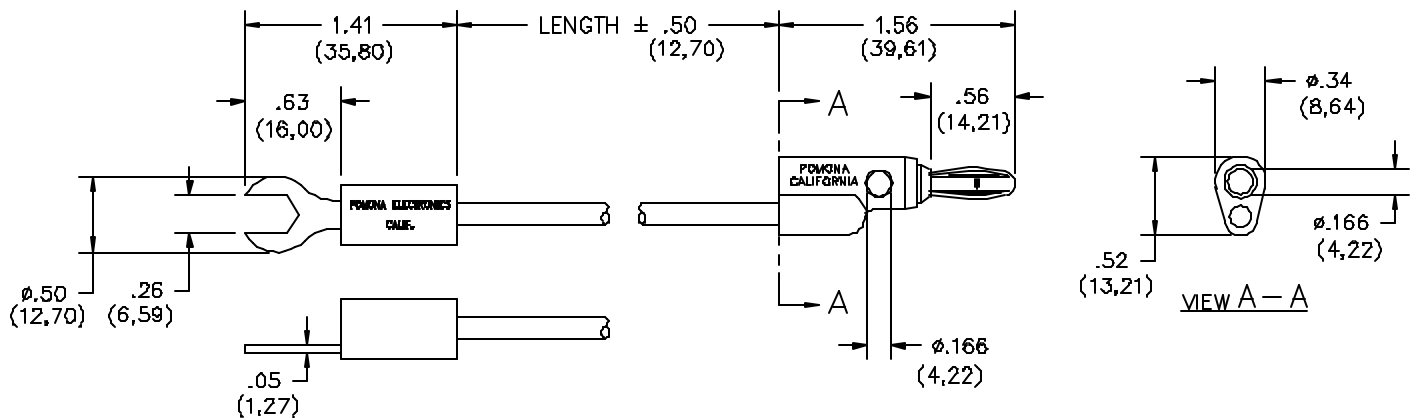
Tel: +86-755-8981 8866 Fax: +86-755-8427 6832

Email & Skype: info@chipsmall.com Web: www.chipsmall.com

Address: A1208, Overseas Decoration Building, #122 Zhenhua RD., Futian, Shenzhen, China



## Model 1370 Insulated Spade Lug To Stacking Banana Plug



### FEATURES:

- Banana Plug provides vertical and cross stacking.
- Provides a Banana Plug output from a barrier strip or binding post.
- Ideal for connection to power supplies and test equipment.
- Both ends will mate to Model #3750 or any standard binding post.

### MATERIALS:

#### Spade Lug & Banana Plug

Material: Brass per QQ-B-626, Alloy 360, ½ Hard, Banana Plug spring – Nickel plated Beryllium Copper

Finish: Nickel plated per QQ-N-290, Class 2, 200/300 microinches.

Insulation: Polypropylene molded to spade lug body and wire. Color matches color of wire.

Wire: 18 AWG stranding 65 x 36 t.c., PVC insulated 3.66 (.144) O.D.

Color: See Ordering Information.

Marking: "POMONA 1370-\*."

### RATINGS:

Operating Temperature: +55°C. (+131°F.) Max.

Operating Voltage: 5000 VDC Max.

Current: 15 Amperes

### ORDERING INFORMATION: Model 1370-XX-\*

XX = Cable Lengths, Standard Lengths: 12" (305), 24" (610), 36" (914), 48" (1219) & 60" (1524). Additional lengths and colors can be quoted upon request.

\*= Color, -0 Black, -2 Red. Ordering Example: 1370-60-2 Indicates 60" in length, color is Red

All dimensions are in inches. Tolerances (except noted): .xx = ±.02" (.51 mm), .xxx = ±.005" (.127 mm).

All specifications are to the latest revisions. Specifications are subject to change without notice.

Registered trademarks are the property of their respective companies. Made in USA