



Chipsmall Limited consists of a professional team with an average of over 10 year of expertise in the distribution of electronic components. Based in Hongkong, we have already established firm and mutual-benefit business relationships with customers from,Europe,America and south Asia,supplying obsolete and hard-to-find components to meet their specific needs.

With the principle of “Quality Parts,Customers Priority,Honest Operation,and Considerate Service”,our business mainly focus on the distribution of electronic components. Line cards we deal with include Microchip,ALPS,ROHM,Xilinx,Pulse,ON,Everlight and Freescale. Main products comprise IC,Modules,Potentiometer,IC Socket,Relay,Connector.Our parts cover such applications as commercial,industrial, and automotives areas.

We are looking forward to setting up business relationship with you and hope to provide you with the best service and solution. Let us make a better world for our industry!



Contact us

Tel: +86-755-8981 8866 Fax: +86-755-8427 6832

Email & Skype: info@chipsmall.com Web: www.chipsmall.com

Address: A1208, Overseas Decoration Building, #122 Zhenhua RD., Futian, Shenzhen, China



THIS DRAWING IS UNPUBLISHED.

RELEASED FOR PUBLICATION

© COPYRIGHT BY TYCO ELECTRONICS CORPORATION. ALL RIGHTS RESERVED.

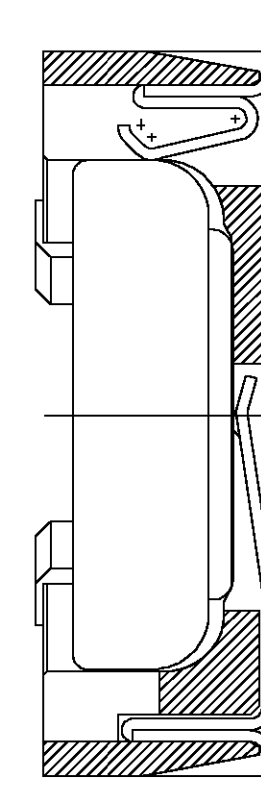
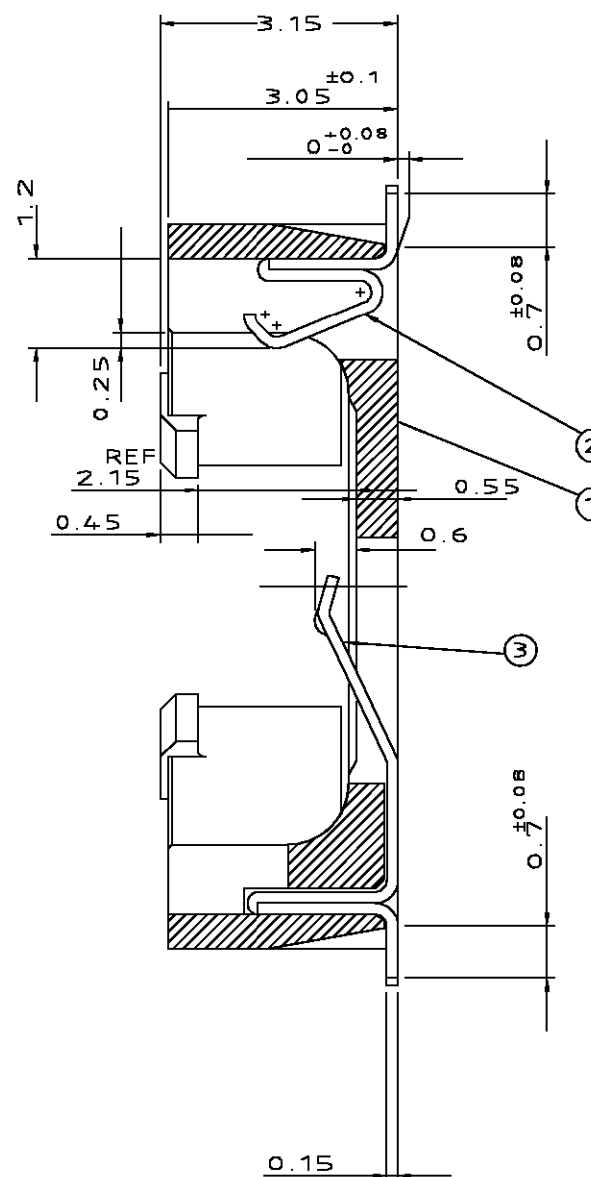
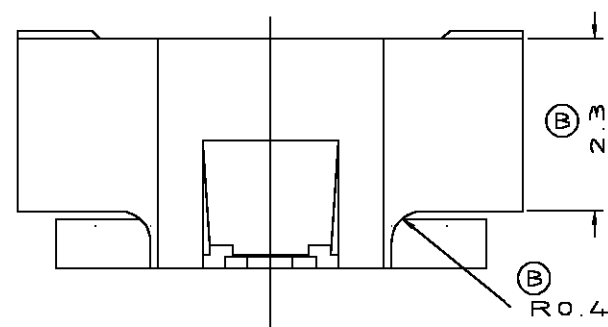
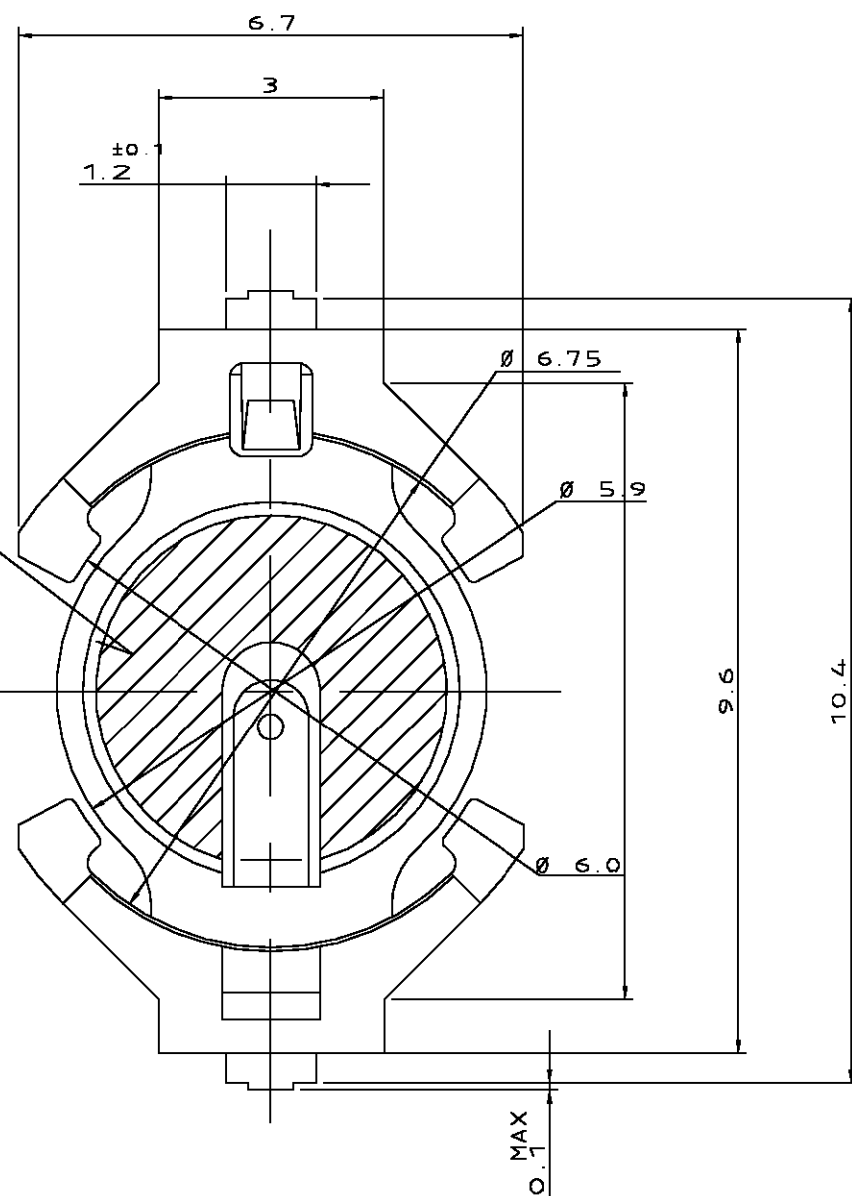
LOC

DIST

REVISIONS

変更

| P | LTR | DESCRIPTION | DATE | DWN | APVD |
|---|-----|-------------------------|---------|-----|------|
| | O | RELEASED <FJ00-0257-00> | 25APR00 | T.K | K.I |
| | A | REVISED <FJ00-1428-00> | 18OCT00 | C.O | K.I |
| | B | REVISED <FJ00-2037-00> | 05OCT01 | C.O | K.I |

吸着エリア
VACUUM AREA- 1;本図
- 1;AS SHOWN

電池接着図

HOLDING BATTERY DWG.

| | | |
|-----------------------|-----------|------|
| STAINLESS STEEL | - CONTACT | ③ |
| STAINLESS STEEL | + CONTACT | ② |
| THERMOPLASTIC (GREEN) | HOUSING | ① |
| MATERIAL | NAME | ITEM |

THIS DRAWING IS A CONTROLLED DOCUMENT.

| | |
|----------------------------|--|
| DIMENSIONS: 単位: 特 MM | TOLERANCES UNLESS OTHERWISE SPECIFIED: 一般公差 |
| | 0 PLC ± 0.15 1 PLC ± 0.25 2 PLC ± 0.3 3 PLC ± - 4 PLC ± - ANGLES ± 3° |
| MATERIAL 材料 | FINISH 仕上 |

| | |
|----------------------------|----------|
| DWN T.KIMURA | 14APR00 |
| CHK K.IKEGAMI | 25APR00 |
| APVD K.IKEGAMI | 25APR00 |
| PRODUCT SPEC 製品規格 | 108-5697 |
| APPLICATION SPEC 取付適用規格 | 114-5248 |
| WEIGHT | 0.094 |

AMPTyco Electronics AMP K.K.
Kawasaki, JapanNAME
名称

BATTERY HOLDER FOR ML621

SIZE

CAGE CODE

DRAWING NO
番号

RESTRICTED TO

A3

00779

C-1376164

—

CUSTOMER DRAWING

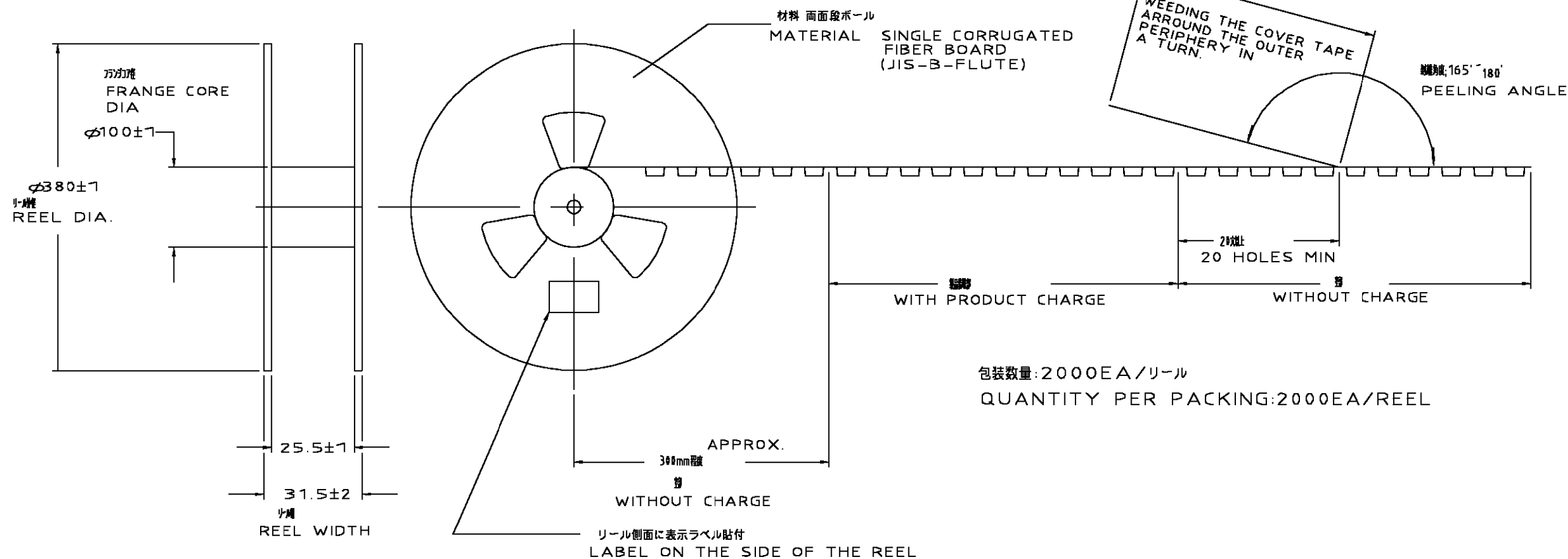
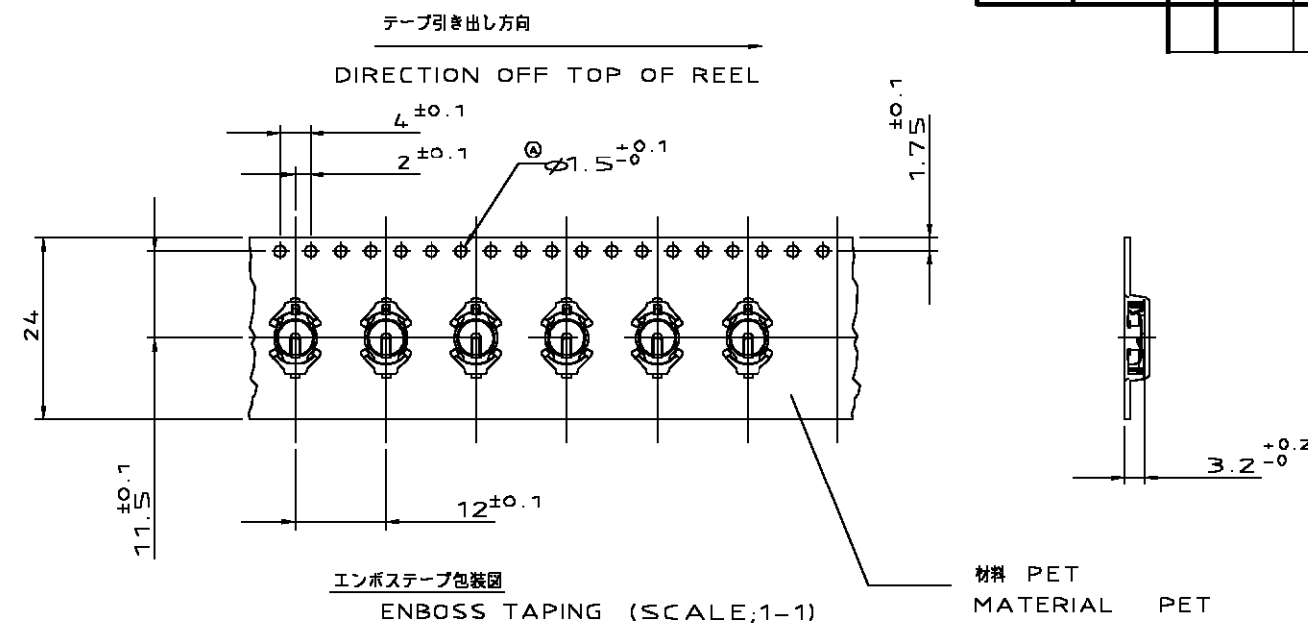
SCALE
尺度 10:1SHEET
1 OF 2REV
B

THIS DRAWING IS UNPUBLISHED.

RELEASED FOR PUBLICATION

© COPYRIGHT — BY TYCO ELECTRONICS CORPORATION. ALL RIGHTS RESERVED.

| LOC | DIST | REVISIONS | | | |
|-----|------|-----------|-----|-------------|------|
| J | — | P | LTR | DESCRIPTION | DATE |
| | | | | SEE 1 OF 2 | |



推奨基板パターン形状
RECOMMENDED PATTERN DIMENSION

| | | | | | |
|---|--|------------------------------|---|--------------------|-------------------------------|
| THIS DRAWING IS A CONTROLLED DOCUMENT. | | DWN T.KIMURA 14APR00 | AMP Tyco Electronics AMP K.K. Kawasaki, Japan | | |
| | | CHK K.IKEGAMI 25APR00 | | | |
| | | APVD K.IKEGAMI 25APR00 | NAME 名称 | | |
| DIMENSIONS: 単位: 特 MM | | PRODUCT SPEC 製品規格 | BATTERY HOLDER FOR ML621 | | |
| TOLERANCES UNLESS OTHERWISE SPECIFIED: 一般公差 | | APPLICATION SPEC 取付適用規格 | | | |
| MATERIAL 材料 | | WEIGHT | SIZE A3 | CAGE CODE 00779 | DRAWING NO 番号 C-1376164 |
| | | FINISH 仕上 | RESTRICTED TO — | | |
| | | | CUSTOMER DRAWING | | |
| | | | SCALE 尺度 | SHEET 2 OF 2 | REV B |