



Chipsmall Limited consists of a professional team with an average of over 10 year of expertise in the distribution of electronic components. Based in Hongkong, we have already established firm and mutual-benefit business relationships with customers from,Europe,America and south Asia,supplying obsolete and hard-to-find components to meet their specific needs.

With the principle of “Quality Parts,Customers Priority,Honest Operation,and Considerate Service”,our business mainly focus on the distribution of electronic components. Line cards we deal with include Microchip,ALPS,ROHM,Xilinx,Pulse,ON,Everlight and Freescale. Main products comprise IC,Modules,Potentiometer,IC Socket,Relay,Connector.Our parts cover such applications as commercial,industrial, and automotives areas.

We are looking forward to setting up business relationship with you and hope to provide you with the best service and solution. Let us make a better world for our industry!



Contact us

Tel: +86-755-8981 8866 Fax: +86-755-8427 6832

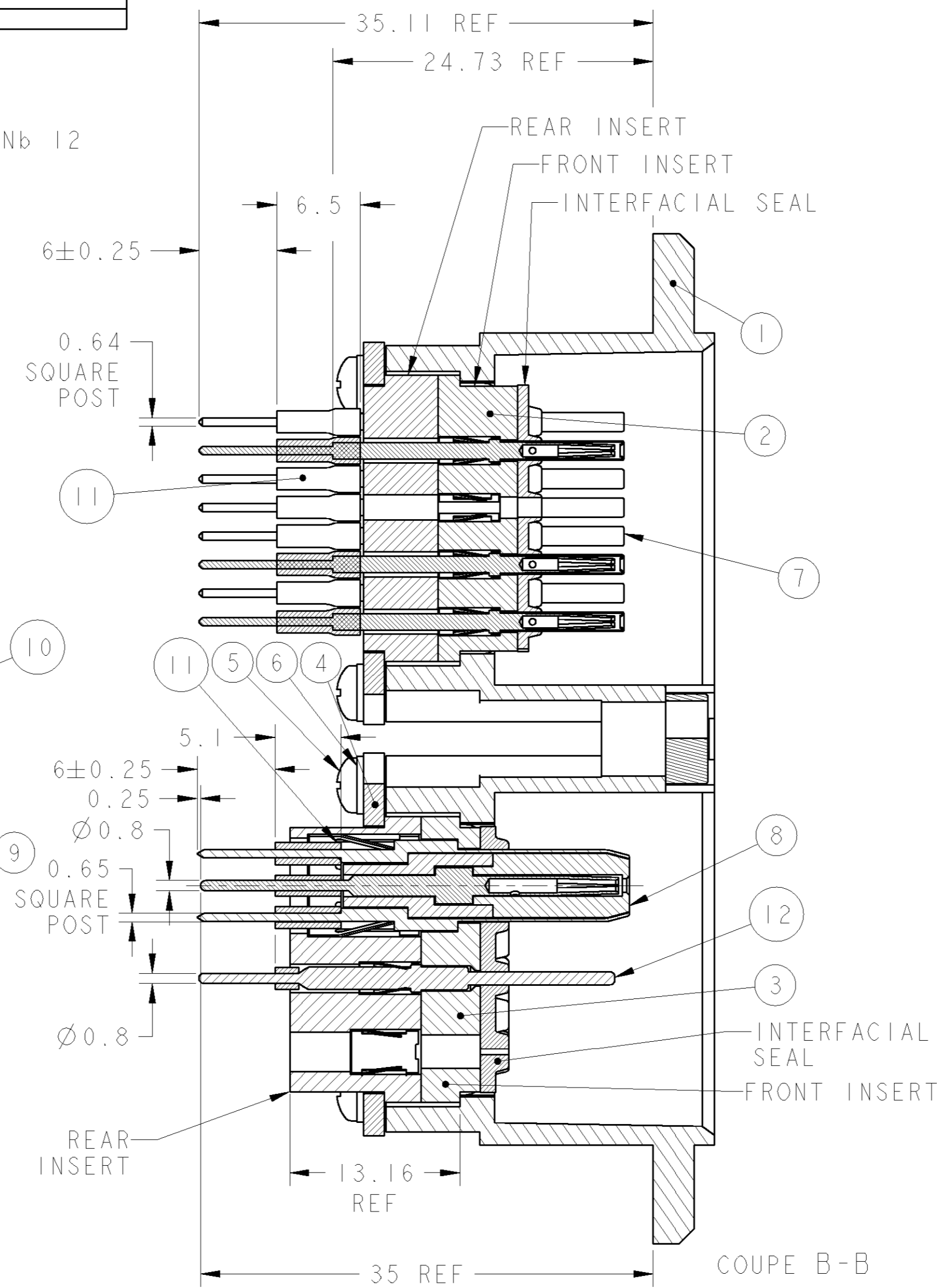
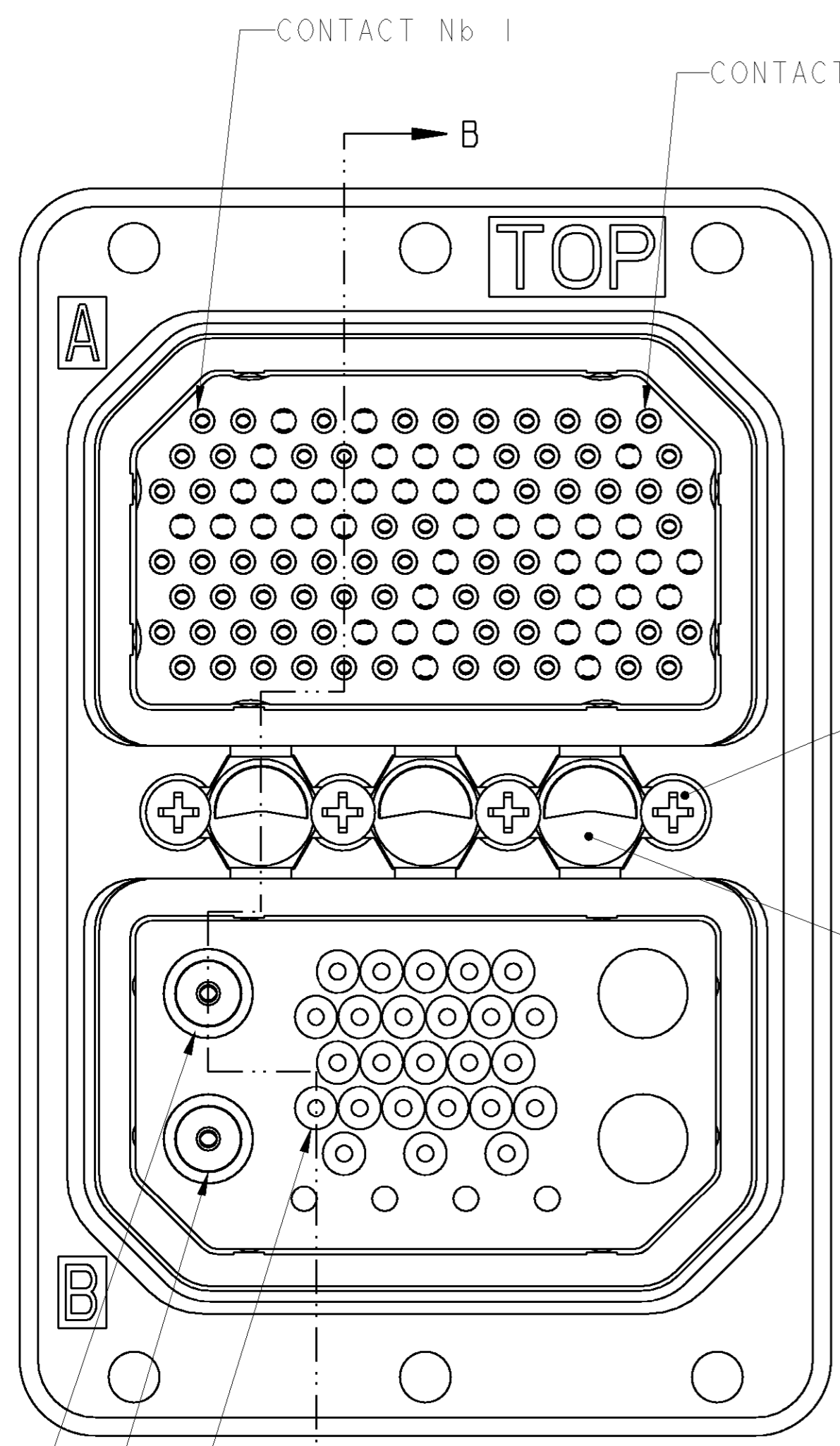
Email & Skype: info@chipsmall.com Web: www.chipsmall.com

Address: A1208, Overseas Decoration Building, #122 Zhenhua RD., Futian, Shenzhen, China



THIS DRAWING IS UNPUBLISHED.
 DIFFUSION RESTREINTE
 © COPYRIGHT 20 BY TYCO ELECTRONICS CORPORATION. ALL RIGHTS RESERVED.
 LIBRE A LA DIFFUSION
 TOUS DROITS RESERVES

LOC	DIST	REVISIONS					
F	00	P	LTR	DESCRIPTION MODIFICATIONS	DATE	DWN DESS.	APVD APP.
		E		UPDATE, ADD NOTES	12MAY2003	TC	YP
		F		UPDATE PART LIST	16JUL2003	TC	YP
		G		ADD CONTACT SIZE 20, CHANGE TUBING LENGH	01JUN2004	TC	YP



Qty	DESCRIPTION	ITEM
1	CONTACT SIZE 20	12
66+6+1	HEAT SHRINKABLE TUBING	11
2	PLUG SIZE 5	-
4	PLUG SIZE 16	-
25	PLUG SIZE 20	-
40	PLUG SIZE 22	-
2	CONDUCTIVE CAP (Recept.)	-
4	SCREW FLAT HEAD	10
3	KEYING INSERT	9
2	COAX CONTACT SIZE 5	8
66	CONTACT SIZE 22	7
8	WASHER	6
8	SCREW	5
2	RETAINER PLATE	4
1	SPECIAL INSERT 33C4	3
1	INSERT 106 Pos.	2
1	RECEPTACLE SHELL SIZE 2	1

NOTES:
 Cavity A: insert 106 ways with 66 contacts size 22 208215-2.
 Loading positions:
 1, 2, 4, 6, 7, 8, 9, 10, 11, 12, 13, 14, 16, 17, 21, 22, 23, 25, 26, 27, 35, 36, 37, 38, 39, 45, 46, 52, 53, 54, 55, 56, 57, 58, 59, 61, 62, 67, 68, 69, 70, 71, 72, 74, 75, 76, 80, 81, 82, 83, 84, 88, 89, 92, 93, 94, 95, 96, 97, 98, 99, 101, 102, 103, 105, 106.
 Cavity B: insert 33C4 ways with 2 solder contacts coax size 5, loaded in A1 and A3 positions.
 1 contact size 20 (solder type) in cavity 8.

PART NUMBER: 1379614-1

<small>THIS DRAWING IS A CONTROLLED DOCUMENT FOR TYCO ELECTRONICS CORPORATION IT IS SUBJECT TO CHANGE AND THE CONTROLLING ENGINEERING ORGANIZATION SHOULD BE CONTACTED FOR THE LATEST REVISION. CE PLAN EST UN DOCUMENT CONTRÔLÉ PAR TYCO ELECTRONICS. IL EST SUSCEPTIBLE D'ÊTRE RÉVISÉ. CONTACTER LE SERVICE TECHNIQUE DE TYCO ELECTRONICS POUR OBTENIR LA DERNIÈRE RÉVISION.</small>		DWN / DESSINE 16MAY2002 I. CORRIOLU CHK / VERIFIE 16MAY2002 Y. PETRONIN APVD / APPROUVE 16MAY2002 M. EURIO	tyco Electronics TYCO ELECTRONICS France SAS BP 39, 95301 CERGY-PONTOISE Cedex
DIMENSIONS: mm 	TOLERANCES UNLESS OTHERWISE SPECIFIED: (SUIV NB DE DECIMALES) 0 PLC / DEC: ± 1 PLC / DEC: ± 2 PLC / DEC: ± 3 PLC / DEC: ± 4 PLC / DEC: ± ANGLES: ±	PRODUCT SPEC SPEC. PRODUIT APPLICATION SPEC SPEC. APPLICATION WEIGHT MASSE APPROX.	NAME TITRE SPECIAL ARINC 404 SIZE FORMAT A2 CAGE CODE 00779 DRAWING NO No PLAN 1379614 RESTRICTED TO RESERVE A - CUSTOMER DRAWING / PLAN CLIENT UNIFORMENT POUR REFERENCE SCALE ECHELLE 3:1 SHEET FEUILLE OF DE REV G