



Chipsmall Limited consists of a professional team with an average of over 10 year of expertise in the distribution of electronic components. Based in Hongkong, we have already established firm and mutual-benefit business relationships with customers from,Europe,America and south Asia,supplying obsolete and hard-to-find components to meet their specific needs.

With the principle of “Quality Parts,Customers Priority,Honest Operation,and Considerate Service”,our business mainly focus on the distribution of electronic components. Line cards we deal with include Microchip,ALPS,ROHM,Xilinx,Pulse,ON,Everlight and Freescale. Main products comprise IC,Modules,Potentiometer,IC Socket,Relay,Connector.Our parts cover such applications as commercial,industrial, and automotives areas.

We are looking forward to setting up business relationship with you and hope to provide you with the best service and solution. Let us make a better world for our industry!



Contact us

Tel: +86-755-8981 8866 Fax: +86-755-8427 6832

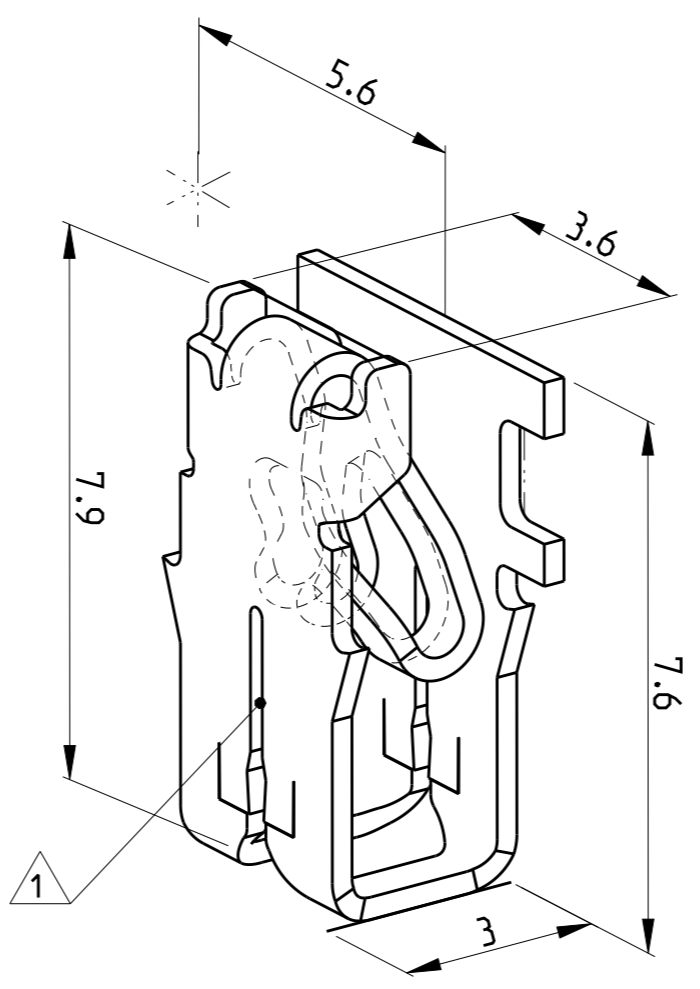
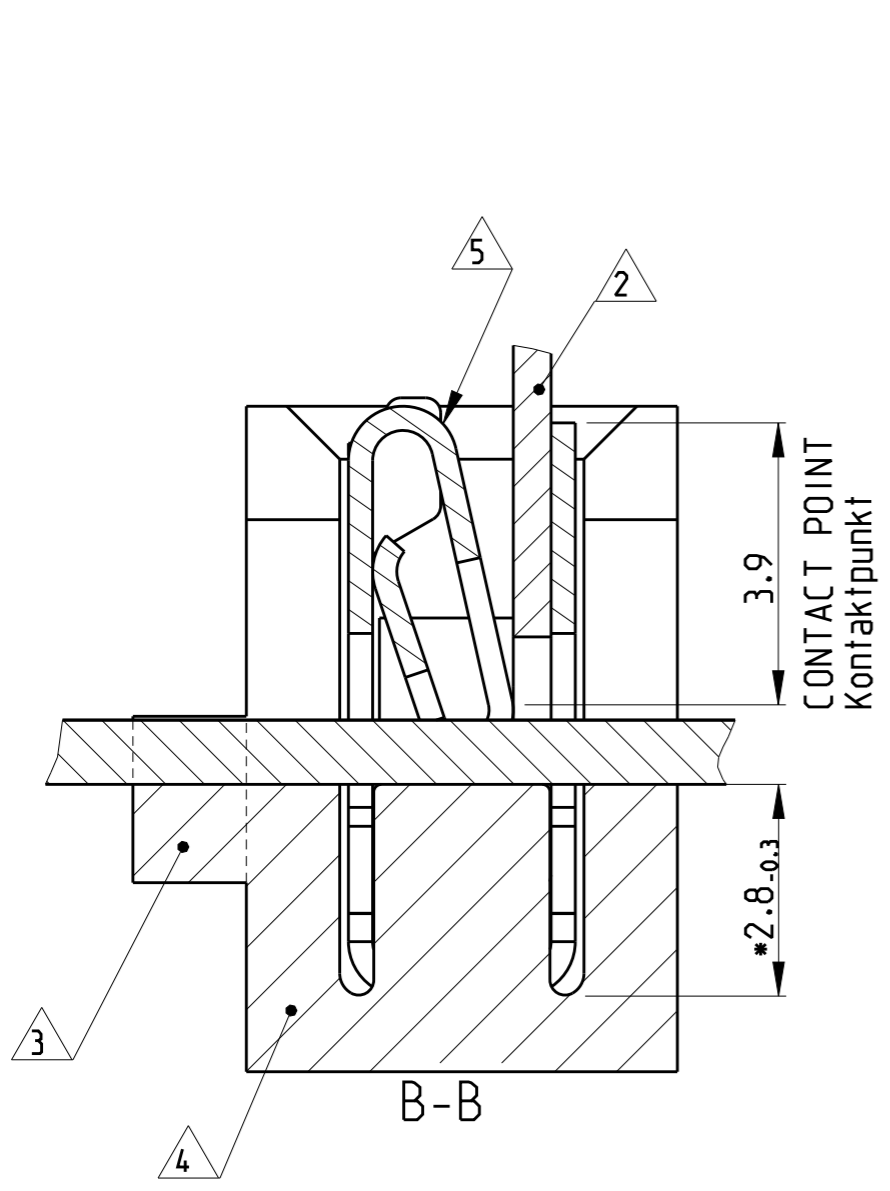
Email & Skype: info@chipsmall.com Web: www.chipsmall.com

Address: A1208, Overseas Decoration Building, #122 Zhenhua RD., Futian, Shenzhen, China



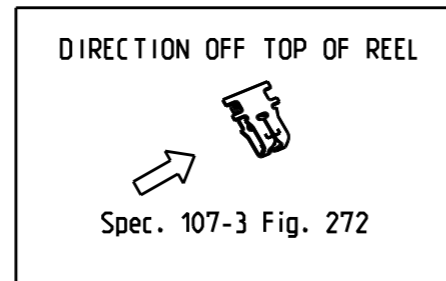
THIS DRAWING IS UNPUBLISHED
 RELEASED FOR PUBLICATION 2008
 © COPYRIGHT 2008 BY - ALL RIGHTS RESERVED.

REVISIONS					
P	LTR	DESCRIPTION	DATE	DWN	APVD
E1		DWG adapted/note 4 changed	04-02-2009	DZ	TK
E2		ECR-09-011231	19MAY2009	SRE	PCH
E3		REVISED PER ECR-16-008608	14 JUN2016	NK	PKS



- △ 1 SLOT ACCEPTS:
SINGLE OR DOUBLE MAGNET WIRE
(0.63)..0.65...0.85mm DIA
Kontakt geeignet fuer :
Lackdraht, Einzeldraht und Doppeldraht
Ø(0.63)..0.65...0.85 mm
- △ 2 POKE IN TAB TERMINAL 3.4x0.5mm
Poke in Flachstecker 3.4x0.5mm
- △ 3 AREA WILL BE CUT BY TERMINATION
Bereich wird beim Kontaktieren abgetrennt
- △ 4 CAVITY ACCORDING TO TE SPEC. 411-18512
Kontakt Kammer nach TE Spec. 411-18512
- △ 5 IDENTIFICATION NO. FOR MAGNET WIRE RANGE (20)
Kennziffer fuer Lackdrahtbereich (20)

1394759-5	-	CuNiSi	TIN PLATED	MAG MATE LEAF TERMINAL	-
1394759-3	-	CuZn	PRE TINNED	MAG MATE LEAF TERMINAL	-
1394759-2	-	CuNiSi	PRE TINNED	MAG MATE LEAF TERMINAL	-
1394759-1	-	CuNiSi	BLANK	MAG MATE LEAF TERMINAL	-
PART NO	PCS.	MATERIAL	SURFACE COLOUR	DESCRIPTION	ITEM NO



THIS DRAWING IS A CONTROLLED DOCUMENT.		DWN H. ATZMANN 04-01-01	TE Connectivity MAG MATE LEAF TERMINAL MARK II																																				
DIMENSIONS: mm		CHK H. Plößer 04-01-01																																					
TOLERANCES UNLESS OTHERWISE SPECIFIED: n. ISO 8015, n. ISO 2768-mS-E n. DIN 16901-140		APVD -	NAME																																				
<table border="0"> <tr> <td>0 PLC</td><td>±</td><td rowspan="5">} 0.2 mm</td> <td colspan="3">PRODUCT SPEC</td> </tr> <tr> <td>1 PLC</td><td>±</td><td colspan="3">108-2012</td> </tr> <tr> <td>2 PLC</td><td>±</td><td colspan="3">APPLICATION SPEC</td> </tr> <tr> <td>3 PLC</td><td>±</td><td colspan="3">114-2046</td> </tr> <tr> <td>4 PLC</td><td>±</td><td colspan="3">WEIGHT</td> </tr> <tr> <td>ANGLES</td><td>±1°</td><td colspan="4"></td> </tr> </table>		0 PLC	±	} 0.2 mm	PRODUCT SPEC			1 PLC	±	108-2012			2 PLC	±	APPLICATION SPEC			3 PLC	±	114-2046			4 PLC	±	WEIGHT			ANGLES	±1°					SIZE A3			CAGE CODE 00779	DRAWING NO C-1394759	RESTRICTED TO -
0 PLC	±	} 0.2 mm	PRODUCT SPEC																																				
1 PLC	±		108-2012																																				
2 PLC	±		APPLICATION SPEC																																				
3 PLC	±		114-2046																																				
4 PLC	±		WEIGHT																																				
ANGLES	±1°																																						
MATERIAL SEE TABLE		FINISH SEE TABLE		CUSTOMER DRAWING		SCALE 10:1	SHEET 1 OF 1	REV E3																															