



Chipsmall Limited consists of a professional team with an average of over 10 year of expertise in the distribution of electronic components. Based in Hongkong, we have already established firm and mutual-benefit business relationships with customers from,Europe,America and south Asia,supplying obsolete and hard-to-find components to meet their specific needs.

With the principle of “Quality Parts,Customers Priority,Honest Operation,and Considerate Service”,our business mainly focus on the distribution of electronic components. Line cards we deal with include Microchip,ALPS,ROHM,Xilinx,Pulse,ON,Everlight and Freescale. Main products comprise IC,Modules,Potentiometer,IC Socket,Relay,Connector.Our parts cover such applications as commercial,industrial, and automotives areas.

We are looking forward to setting up business relationship with you and hope to provide you with the best service and solution. Let us make a better world for our industry!



## Contact us

Tel: +86-755-8981 8866 Fax: +86-755-8427 6832

Email & Skype: info@chipsmall.com Web: www.chipsmall.com

Address: A1208, Overseas Decoration Building, #122 Zhenhua RD., Futian, Shenzhen, China



PART NUMBER	CABLE TYPE	ITEM ① BUSHING	ITEM ② FRAME	ITEM ③ BLADE	ITEM ④ CAP SCREW 4-40	ITEM ⑤ CAP SCREW 2-56	ITEM ⑥ L-KEY 3/32 HEX	ITEM ⑦ L-KEY 5/64 HEX
140-0000-975	RG-405 .086 OD SEMI-RIGID	140-0000-977 STEEL DRILL ROD HEAT TREATED 43-50 RC	140-0000-980 STEEL DRILL ROD HEAT TREATED 43-50 RC	140-0000-979 TOOL STEEL HEAT TREATED 57-60 RC	ALLOY STEEL BLACK OXIDE	ALLOY STEEL BLACK OXIDE	ALLOY STEEL BLACK OXIDE	ALLOY STEEL BLACK OXIDE
140-0000-976	RG-402 .141 OD SEMI-RIGID	140-0000-978 STEEL DRILL ROD HEAT TREATED 43-50 RC	140-0000-980 STEEL DRILL ROD HEAT TREATED 43-50 RC	140-0000-979 TOOL STEEL HEAT TREATED 57-60 RC	ALLOY STEEL BLACK OXIDE	ALLOY STEEL BLACK OXIDE	ALLOY STEEL BLACK OXIDE	ALLOY STEEL BLACK OXIDE

DRAWING NO. C-140-0000-975/976	
0	REVISIONS
ENGINEERING RELEASE	
1	12-1-04 JRK JCN TJS 9-22-05 ECN 49570

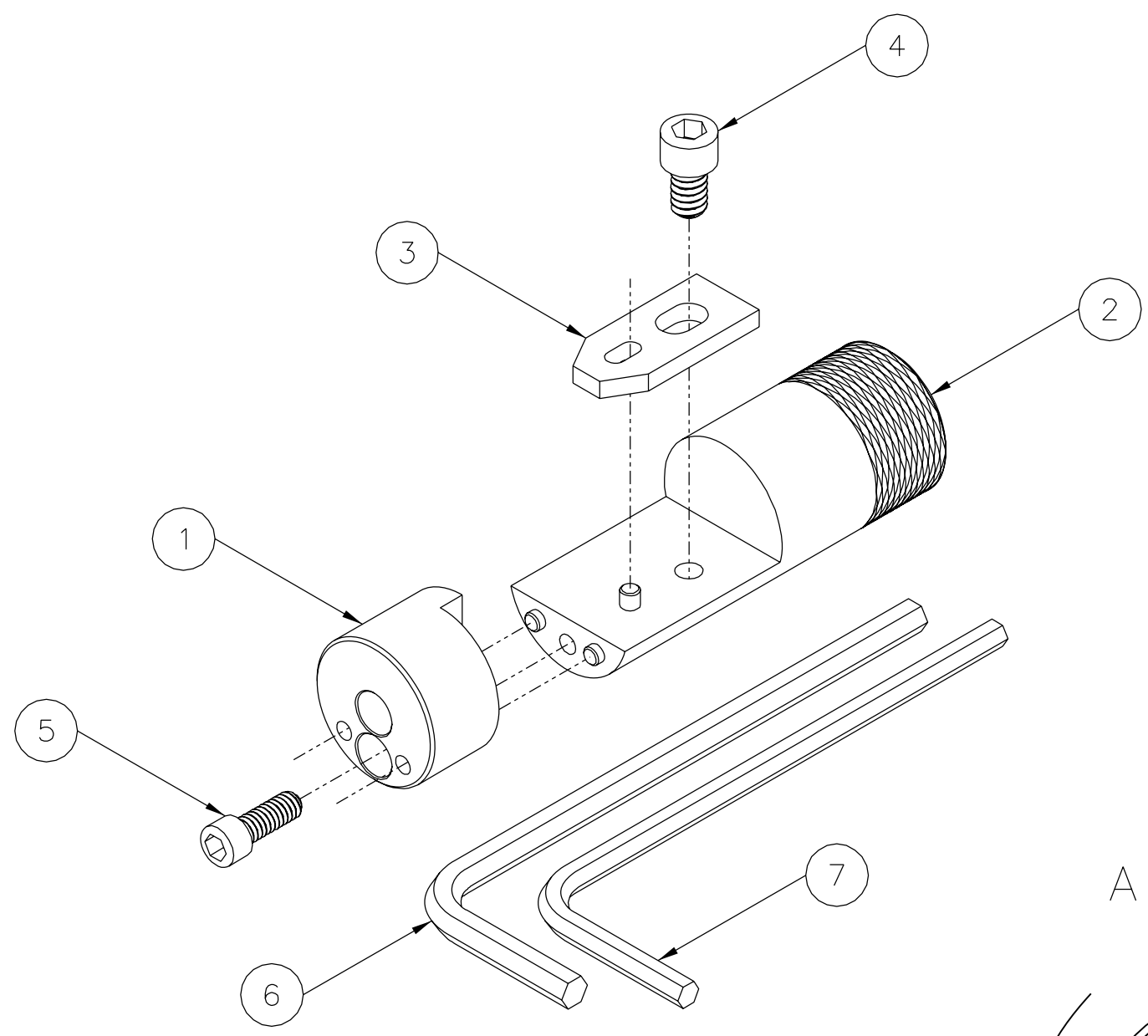


FIGURE 1  
2:1

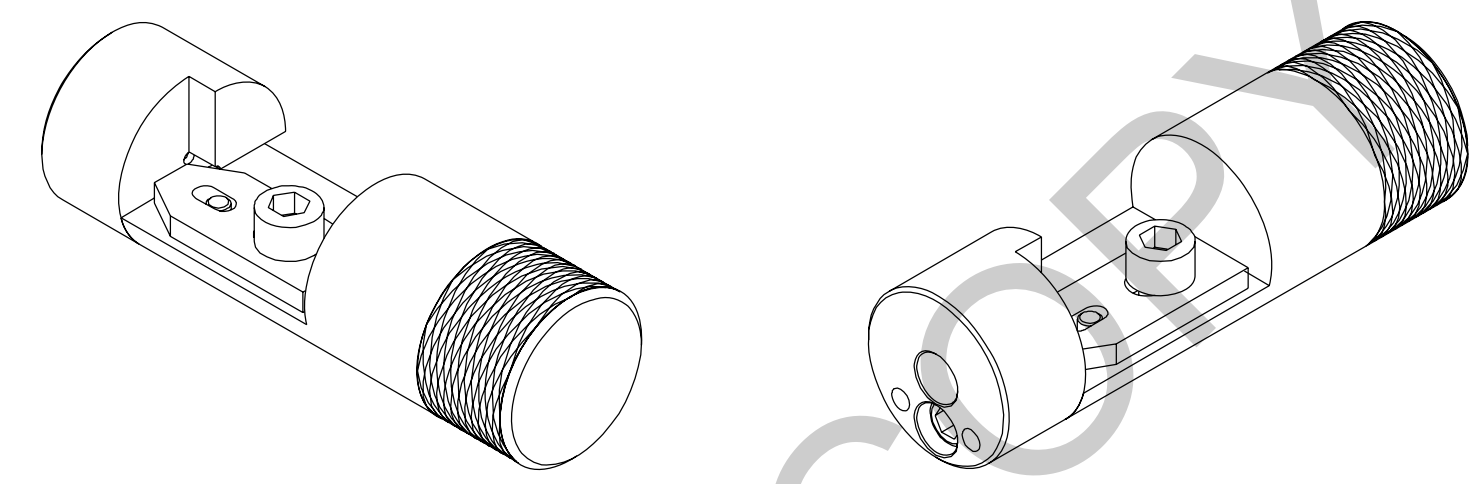
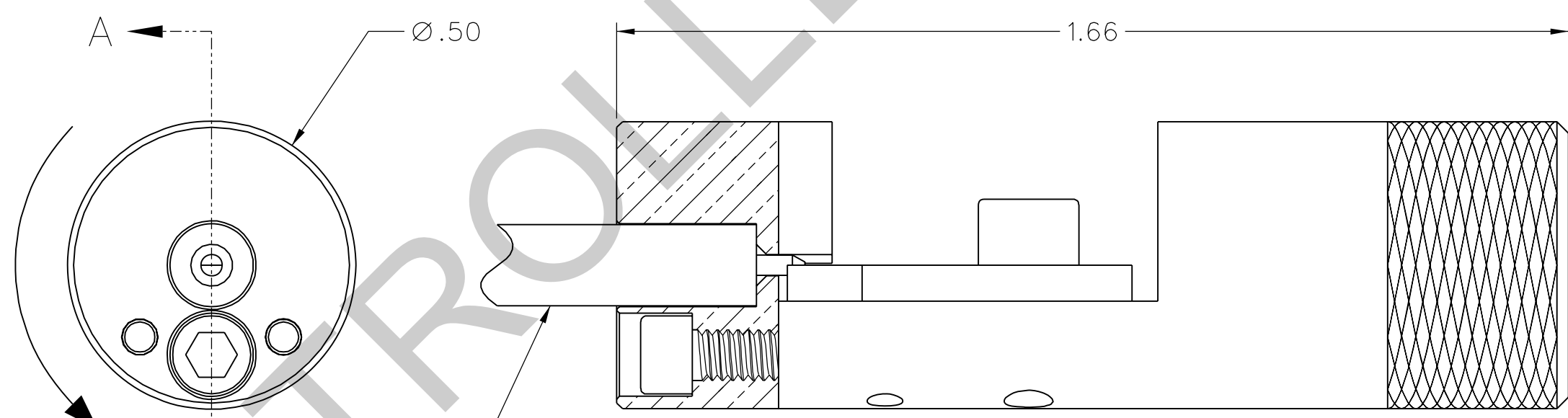


FIGURE 2  
2:1



SECTION A-A  
BUSHING ONLY

NOTES:


1. IDENTIFY ALL PIECE PARTS (7 ITEMS) PER FIGURE 1, AND REMOVE FROM PACKAGING.
2. ALIGN CABLE BUSHING (ITEM 1) WITH FRAME (ITEM 2) PINS AND SECURE IN PLACE WITH CAP SCREW (ITEM 5). HAND TIGHTEN WITH 5/64 HEX L-KEY ALLEN WRENCH (ITEM 7).
3. TOOL WILL STRIP EXPOSED CABLE CENTER CONDUCTORS RANGING FROM .070" TO .130". SLOTS IN BLADE (ITEM 3) ALLOW FOR POSITIONAL ADJUSTMENT. LOCATE BLADE FOR DESIRED POINTING PROFILE AND SECURE IN POSITION WITH CAP SCREW (ITEM 4). HAND TIGHTEN WITH 3/32 HEX L-KEY ALLEN WRENCH (ITEM 6). COMPLETED TOOL ASSEMBLY IS SHOWN IN FIGURE 2.
4. INSERT STRIPPED CABLE INTO BUSHING UNTIL CENTER CONDUCTOR TOUCHES BLADE. WHILE KEEPING LIGHT PRESSURE ON CABLE, TURN TOOL IN DIRECTION SHOWN UNTIL CABLE JACKET AND/OR INSULATION BOTTOMS AGAINST BUSHING SHOULDER, AS SHOWN IN SECTION A-A.
5. BLADE IS REVERSABLE, TURN OVER WHEN DULL TO EXPOSE A NEW CUTTING EDGE.
6. FRAME AND BLADE ARE UNIVERSAL, EXCHANGE BUSHINGS FOR DIFFERENT CABLE TYPES.

CUSTOMER DRAWING

THIS DRAWING TO BE INTERPRETED  
PER ASME Y 14.5M - 1994

"μSTATION"

COMPANY CONFIDENTIAL

TOLERANCE UNLESS OTHERWISE SPECIFIED		DRAWN BY JRK	DATE 11-17-04	 <b>Cinch</b> CONNECTIVITY SOLUTIONS a bel group	Cinch Connectivity Solutions P.O. Box 1732 Waseca, MN 56093 1-800-247-8256	
DECIMALS	mm	CHECKED BY JCN	DATE 12-4-04		TITLE CENTER CONTACT POINTING TOOLS, SEMI-RIGID CABLE	
.XX REF	---	APPROVED BY TJS	DATE 12-27-04	SHEET 2 OF 2		
.XXX	---	RELEASE DATE 9-22-05	SCALE 4:1	DRAWING NO. C-140-0000-975/976		
MATL	---	U/M	INCH			
FINISH	---					