



Chipsmall Limited consists of a professional team with an average of over 10 year of expertise in the distribution of electronic components. Based in Hongkong, we have already established firm and mutual-benefit business relationships with customers from,Europe,America and south Asia,supplying obsolete and hard-to-find components to meet their specific needs.

With the principle of “Quality Parts,Customers Priority,Honest Operation,and Considerate Service”,our business mainly focus on the distribution of electronic components. Line cards we deal with include Microchip,ALPS,ROHM,Xilinx,Pulse,ON,Everlight and Freescale. Main products comprise IC,Modules,Potentiometer,IC Socket,Relay,Connector.Our parts cover such applications as commercial,industrial, and automotives areas.

We are looking forward to setting up business relationship with you and hope to provide you with the best service and solution. Let us make a better world for our industry!



Contact us

Tel: +86-755-8981 8866 Fax: +86-755-8427 6832

Email & Skype: info@chipsmall.com Web: www.chipsmall.com

Address: A1208, Overseas Decoration Building, #122 Zhenhua RD., Futian, Shenzhen, China



Network cable - VS-M12FSBP-PPC/ME-93E-LI/2,0 - 1406519

Please be informed that the data shown in this PDF Document is generated from our Online Catalog. Please find the complete data in the user's documentation. Our General Terms of Use for Downloads are valid (<http://download.phoenixcontact.com>)



Assembled Ethernet cable, CAT5e, shielded, 2-pair, AWG 26 stranded (7-wire), RAL 5021 (water blue), M12 flush-type socket, rear/screw mounting with M16 thread on RJ45 plug/IP67 push-pull metal housing, line, length 2 m



Key commercial data

Packing unit	1 PCE
GTIN	 4 046356 476133
Custom tariff number	85444210
Country of origin	POLAND

Technical data

Mechanical characteristics

Number of positions	4
Number of slots	1
Shielded	Yes
Insertion/withdrawal cycles	≥ 100
Cable diameter	6.70 mm
Cable exit	Straight
Cable structure	2x2xAWG26/7; SF/UTP
Smallest bending radius, fixed installation	33.5 mm (cable, fixed installation)
Smallest bending radius, movable installation	33.5 mm (cable, flexible installation)
Length of cable	2 m
Ambient temperature (operation)	-25 °C ... 60 °C (cable, fixed installation)
	-5 °C ... 60 °C (cable, flexible installation)

Ambient conditions

Ambient temperature (operation)	-25 °C ... 60 °C (cable, fixed installation)
---------------------------------	--

Network cable - VS-M12FSBP-PPC/ME-93E-LI/2,0 - 1406519

Technical data

Ambient conditions

	-5 °C ... 60 °C (cable, flexible installation)
--	--

Material data

Inflammability class according to UL 94	V2
Outer sheath, material	PUR
External sheath, color	water blue RAL 5021

Electrical characteristics

Transmission characteristics (category)	CAT5 (IEC 11801:2002), CAT5e (TIA 568B:2001)
---	--

Line characteristics

Cable type	Ethernet
Cable structure	2x2xAWG26/7; SF/UTP
Conductor cross section	0.14 mm ²
AWG signal line	26
Conductor structure signal line	7x 0.16 mm
Core diameter including insulation	1 mm
External cable diameter	5.90 mm
Wire colors	white/orange-orange, white/green-green
External sheath, color	water blue RAL 5021
Insulation resistance	≥ 5 GΩ*km
Conductor resistance	≤ 284 Ω/km
Transmission characteristics (category)	CAT5 (IEC 11801:2002), CAT5e (TIA 568B:2001)
Working capacitance	48 nF (At 800 Hz)
Wave impedance	100 Ω ±15% (At 1 to 100 MHz)
Nominal voltage, cable	125 V
Test voltage Core/Core	1000 V
Test voltage Core/Shield	500 V
Twisted pairs	2 cores to the pair
Overall twist	Two pairs with two fillers to the core
Shielding	Plastic-coated aluminum foil, tinned copper braided shield
Optical shield covering	85 %
Outer sheath, material	PUR
Conductor material	Bare Cu litz wires
Smallest bending radius, fixed installation	30 mm (cable, fixed installation)
Smallest bending radius, movable installation	78 mm (cable, flexible installation)

Network cable - VS-M12FSBP-PPC/ME-93E-LI/2,0 - 1406519

Classifications

ETIM

ETIM 3.0	EC000830
ETIM 4.0	EC002599
ETIM 5.0	EC000830

UNSPSC

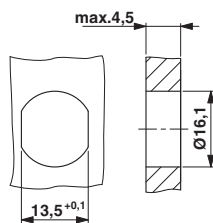
UNSPSC 11	26121604
UNSPSC 12.01	31261501
UNSPSC 13.2	26121616
UNSPSC 6.01	26121616
UNSPSC 7.0901	26121616

eCl@ss

eCl@ss 4.0	272607xx
eCl@ss 4.1	27260701
eCl@ss 5.0	27260701
eCl@ss 5.1	27060307
eCl@ss 6.0	27061801
eCl@ss 7.0	27061801
eCl@ss 8.0	27061801

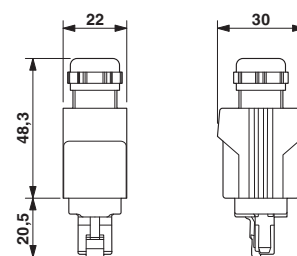
Drawings

Dimensioned drawing



Housing cutout for M16 fastening thread, mounting panel with feed-through hole (alternatively with surface as protection against rotation)

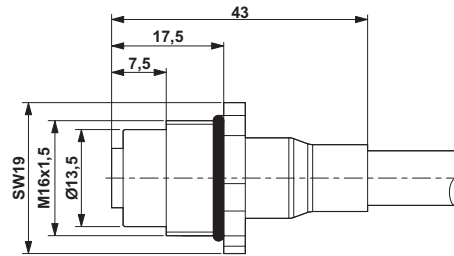
Dimensioned drawing



Push-pull RJ45 connector IP65/67

Network cable - VS-M12FSBP-PPC/ME-93E-LI/2,0 - 1406519

Dimensioned drawing



M12 flush-type connector