



Chipsmall Limited consists of a professional team with an average of over 10 year of expertise in the distribution of electronic components. Based in Hongkong, we have already established firm and mutual-benefit business relationships with customers from,Europe,America and south Asia,supplying obsolete and hard-to-find components to meet their specific needs.

With the principle of “Quality Parts,Customers Priority,Honest Operation,and Considerate Service”,our business mainly focus on the distribution of electronic components. Line cards we deal with include Microchip,ALPS,ROHM,Xilinx,Pulse,ON,Everlight and Freescale. Main products comprise IC,Modules,Potentiometer,IC Socket,Relay,Connector.Our parts cover such applications as commercial,industrial, and automotives areas.

We are looking forward to setting up business relationship with you and hope to provide you with the best service and solution. Let us make a better world for our industry!



Contact us

Tel: +86-755-8981 8866 Fax: +86-755-8427 6832

Email & Skype: info@chipsmall.com Web: www.chipsmall.com

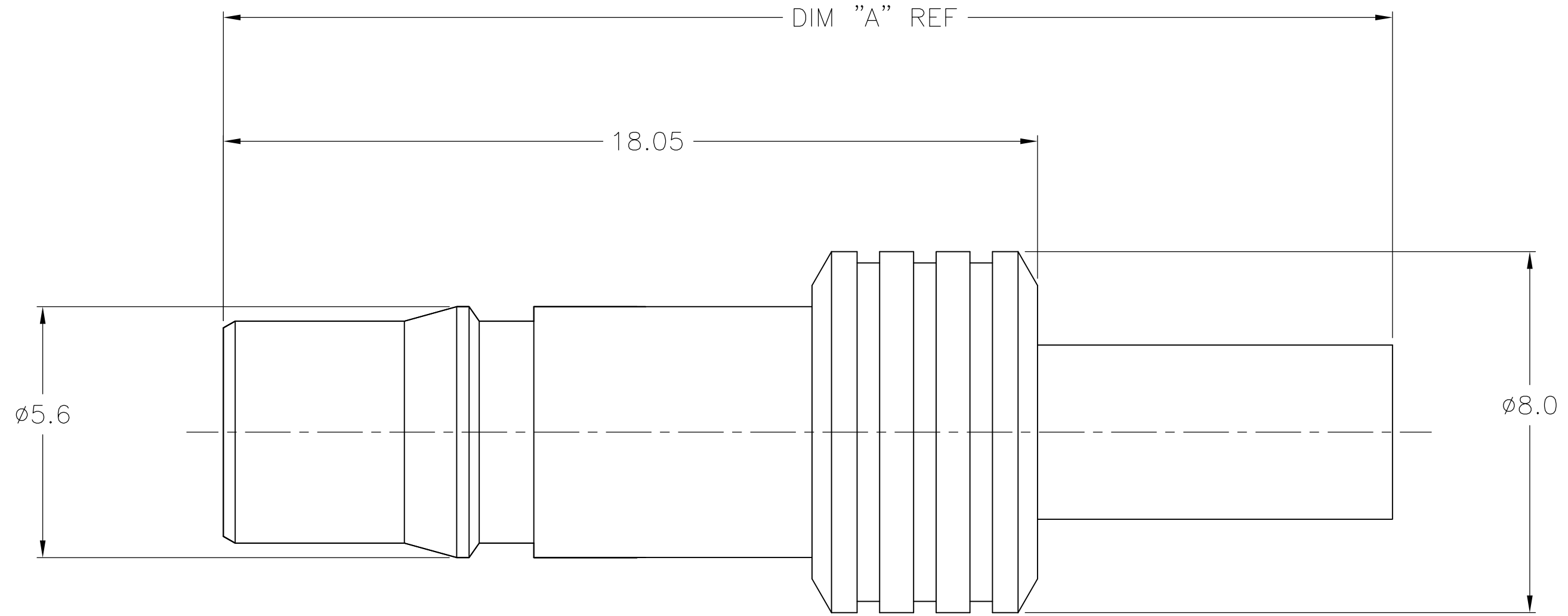
Address: A1208, Overseas Decoration Building, #122 Zhenhua RD., Futian, Shenzhen, China



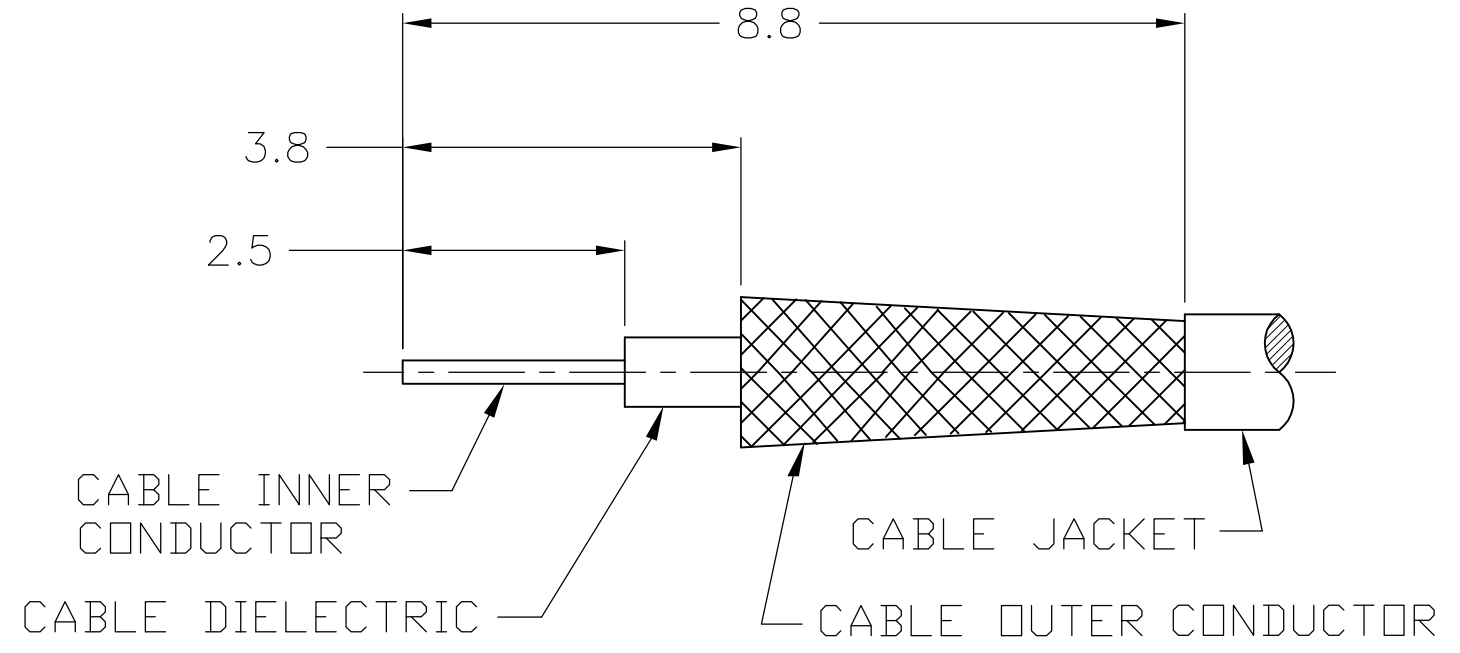
THIS DRAWING IS UNPUBLISHED. RELEASED FOR PUBLICATION
 © COPYRIGHT BY TYCO ELECTRONICS CORPORATION. ALL RIGHTS RESERVED.

LOC	DIST	REVISIONS			
P	LTR	DESCRIPTION	DATE	DWN	APVD
AJ	16				
	A	REVISED PER ECO-08-000700	2/5/2008	DW	BW
	A1	REVISED PER ECO-09-024927	07NOV09	KK	AEG

- 1. CRIMP FERRULE USING CRIMP DIE HEX SIZE SPECIFIED IN TABLE.
- 2. SINGLE PACKED
- 3. BULK PACKED IN QUANTITIES OF 100
- 4. ASSEMBLE TO CABLE USING IS SHEET 408-8900
- 5. OBSOLETE PARTS; OBSOLETE CIS STREAMLINING PER D.RENAUD/D.SINISI



CABLE PREPARATION SCALE: NTS



5	OBSOLETE	3	28.2	5.41	RG58/U, 141, 303 & SF142	1408411-8	9-446556-2	1408448-2	1408338-8
		2	28.2	5.41	RG58/U, 141, 303 & SF142	1408411-8	9-446556-2	1408448-2	1408338-7
5	OBSOLETE	3	28.2	5.41	RG55/U, 142, 223 & 400	1408411-8	2-1403102-5	1408448-2	1408338-6
		2	28.2	5.41	RG55/U, 142, 223 & 400	1408411-8	2-1403102-5	1408448-2	1408338-5
		3	25.9	3.83	RD316/U	1408411-4	2-413889-7	1408448-1	1408338-4
		2	25.9	3.83	RD316/U	1408411-4	2-413889-7	1408448-1	1408338-3
		3	25.9	3.25	RG316/U, 174 & 188	1408411-4	2-413889-4	1408448-1	1408338-2
		2	25.9	3.25	RG316/U, 174 & 188	1408411-4	2-413889-4	1408448-1	1408338-1
	PACK	DIM A	HEX	CABLE	CONTACT	FERRULE	HSG ASSY	PART NO.	

CENTER CONTACT	BERYLLIUM COPPER	GOLD
HOUSING	BRASS	NICKEL
FERRULE	COPPER OR BRASS	NICKEL
DIELECTRIC	PTFE	N/A
COMPONENT	MATERIAL	FINISH

THIS DRAWING IS A CONTROLLED DOCUMENT.

DWN: DCam 25SEP2002
 CHK: -
 APVD: DCam 2/24/04
 PRODUCT SPEC: 108-2087
 APPLICATION SPEC: -

TOLERANCES UNLESS OTHERWISE SPECIFIED:
 0 PLC ± -
 1 PLC ± -
 2 PLC ± 0.10
 3 PLC ± -
 4 PLC ± -
 ANGLES ± 1

MATERIAL: - FINISH: -

WEIGHT: -

CUSTOMER DRAWING

Tyco Electronics Tyco Electronics Corporation
 Harrisburg, PA 17105-3608

NAME: QMA STRAIGHT CABLE JACK CRIMP ATTACHMENT

SIZE: A2 CAGE CODE: 00779 DRAWING NO: 1408338 RESTRICTED TO: -

SCALE: 10:1 SHEET: 1 OF 1 REV: A1