



Chipsmall Limited consists of a professional team with an average of over 10 year of expertise in the distribution of electronic components. Based in Hongkong, we have already established firm and mutual-benefit business relationships with customers from,Europe,America and south Asia,supplying obsolete and hard-to-find components to meet their specific needs.

With the principle of “Quality Parts,Customers Priority,Honest Operation,and Considerate Service”,our business mainly focus on the distribution of electronic components. Line cards we deal with include Microchip,ALPS,ROHM,Xilinx,Pulse,ON,Everlight and Freescale. Main products comprise IC,Modules,Potentiometer,IC Socket,Relay,Connector.Our parts cover such applications as commercial,industrial, and automotives areas.

We are looking forward to setting up business relationship with you and hope to provide you with the best service and solution. Let us make a better world for our industry!



## Contact us

Tel: +86-755-8981 8866 Fax: +86-755-8427 6832

Email & Skype: [info@chipsmall.com](mailto:info@chipsmall.com) Web: [www.chipsmall.com](http://www.chipsmall.com)

Address: A1208, Overseas Decoration Building, #122 Zhenhua RD., Futian, Shenzhen, China



## Device connector, rear mounting - PRC 5-FT25-MC4-150 - 1409212

Please be informed that the data shown in this PDF Document is generated from our Online Catalog. Please find the complete data in the user's documentation. Our General Terms of Use for Downloads are valid (<http://phoenixcontact.com/download>)



PRC device connector, black, 5-pos., 4 mm<sup>2</sup>/630 V/30 A, crimp connection, with 150 mm, cable length smoothly cut off at end



### Key Commercial Data

Packing unit	1 pc
Weight per Piece (excluding packing)	60.0 g
Custom tariff number	85444290
Country of origin	Germany

### Technical data

#### General data

Number of positions	5
Protection class	III
Color	black
Locking type	Snap-in locking
Insertion/withdrawal cycles	50
Pull-out-force	150 N ± 50 N
Insertion force	40 N ± 10 N

#### Connection data

Rated current	30 A (with 6 mm <sup>2</sup> conductor cross section)
Rated voltage (III/2)	690 V
Conductor cross section flexible max.	4 mm <sup>2</sup>
Conductor cross section solid max.	4 mm <sup>2</sup>
Torque	2.5 Nm ± 0.1 Nm (Tightening torque nut)
Wrench size, union nut	32.00 mm
Type of contact	Male connector

## Device connector, rear mounting - PRC 5-FT25-MC4-150 - 1409212

### Technical data

#### Material data

Contact material	Cu
Contact surface material	silver-plated
Contact carrier material	PPE
Material of grip body	PPE
Inflammability class according to UL 94	V0

#### Conductor data

Fixed cable length	150 mm
Single wire, material	PVC
Single wire, color	blue, black, gray, brown, green/yellow
Wire diameter incl. insulation	4.15 mm ±0.15 mm

### Classifications

#### eCl@ss

eCl@ss 4.0	272607xx
eCl@ss 4.1	27260701
eCl@ss 5.0	27260701
eCl@ss 5.1	27260701
eCl@ss 6.0	27279220
eCl@ss 7.0	27440103
eCl@ss 8.0	27440102

#### ETIM

ETIM 4.0	EC002061
ETIM 5.0	EC002635

#### UNSPSC

UNSPSC 6.01	30211923
UNSPSC 7.0901	39121522
UNSPSC 11	39121522
UNSPSC 12.01	39121522
UNSPSC 13.2	39121522

### Approvals

#### Approvals

---

## Device connector, rear mounting - PRC 5-FT25-MC4-150 - 1409212

### Approvals


Approvals


UL Listed / cUL Listed / cULus Listed

Ex Approvals

Approvals submitted

### Approval details

UL Listed 	
mm²/AWG/kcmil	4
Nominal current I <sub>N</sub>	30 A
Nominal voltage U <sub>N</sub>	600 V

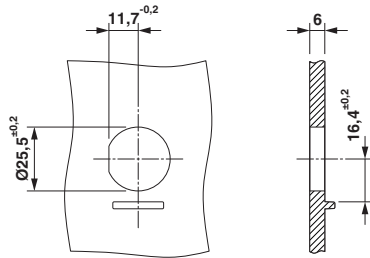
cUL Listed 	
mm²/AWG/kcmil	4
Nominal current I <sub>N</sub>	30 A
Nominal voltage U <sub>N</sub>	600 V

cULus Listed 	
--	--

### Drawings

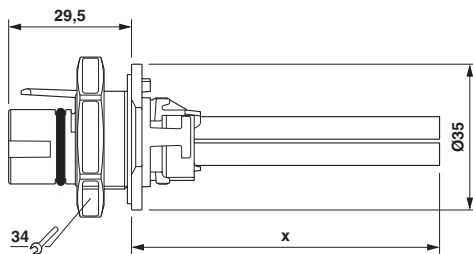
## Device connector, rear mounting - PRC 5-FT25-MC4-150 - 1409212

Dimensional drawing



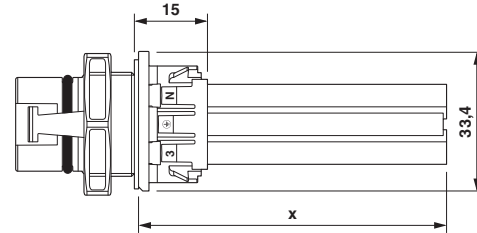
Housing cutout

Dimensional drawing



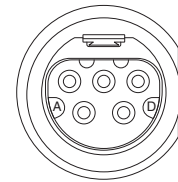
Dimensional drawing

Dimensional drawing



Dimensional drawing

Schematic diagram



Connector pin assignment