



Chipsmall Limited consists of a professional team with an average of over 10 year of expertise in the distribution of electronic components. Based in Hongkong, we have already established firm and mutual-benefit business relationships with customers from,Europe,America and south Asia,supplying obsolete and hard-to-find components to meet their specific needs.

With the principle of “Quality Parts,Customers Priority,Honest Operation,and Considerate Service”,our business mainly focus on the distribution of electronic components. Line cards we deal with include Microchip,ALPS,ROHM,Xilinx,Pulse,ON,Everlight and Freescale. Main products comprise IC,Modules,Potentiometer,IC Socket,Relay,Connector.Our parts cover such applications as commercial,industrial, and automotives areas.

We are looking forward to setting up business relationship with you and hope to provide you with the best service and solution. Let us make a better world for our industry!



Contact us

Tel: +86-755-8981 8866 Fax: +86-755-8427 6832

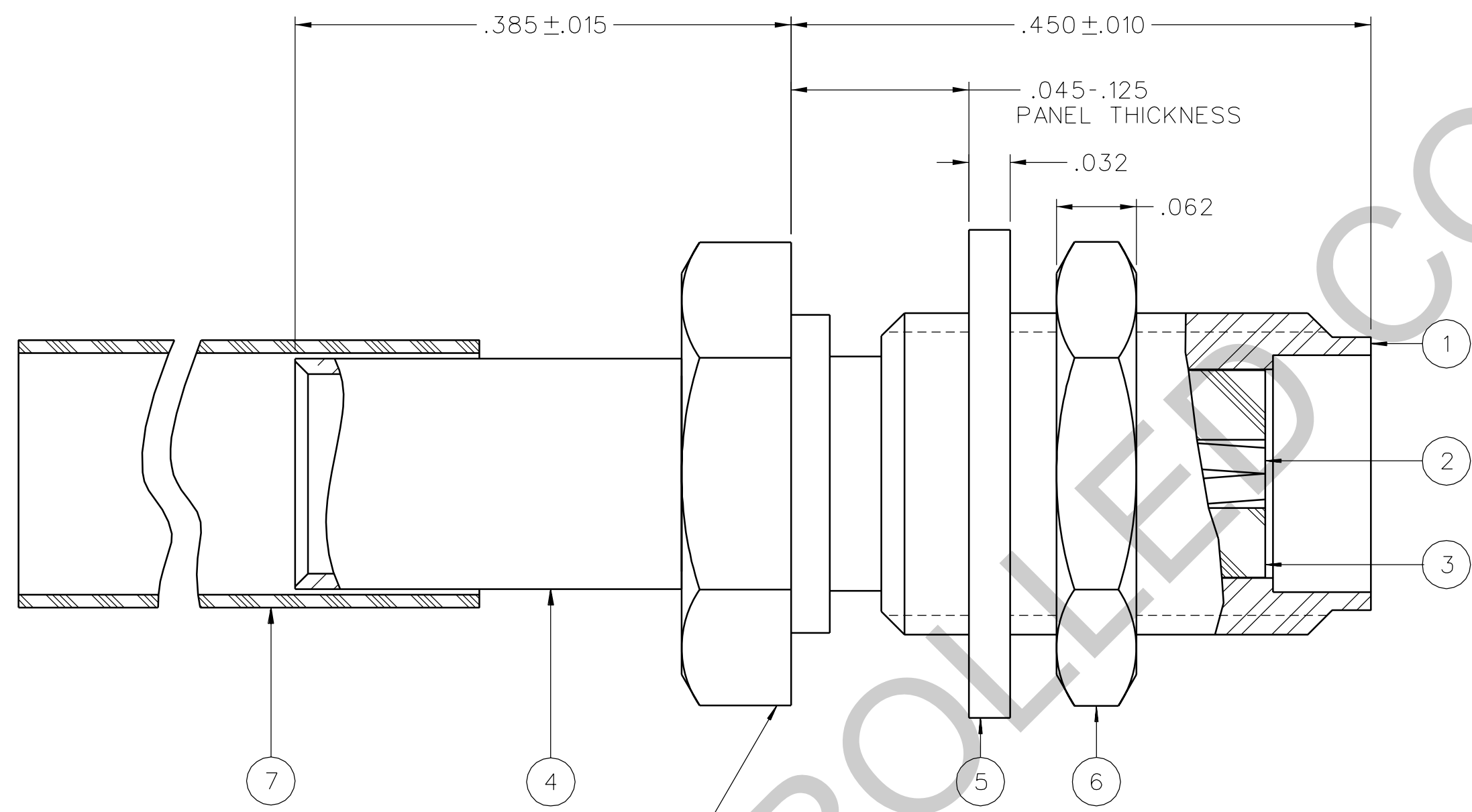
Email & Skype: info@chipsmall.com Web: www.chipsmall.com

Address: A1208, Overseas Decoration Building, #122 Zhenhua RD., Futian, Shenzhen, China



| PART NUMBER | ITEM ① BODY | ITEM ② CONTACT | ITEM ③ INSULATOR | ITEM ④ CRIMP SLEEVE | ITEM ⑤ LOCK WASHER | ITEM ⑥ NUT | ITEM ⑦ HEAT SHRINK |
|--------------|---|--|---------------------|--|---|---|----------------------------|
| 141-0304-411 | STAINLESS STEEL GOLD PL .00001 MIN OVER NICKEL PL .00005 MIN OVER | BERYLLIUM COPPER GOLD PL .00005 MIN OVER NICKEL PL .00005 MIN OVER COPPER PL .00005 MIN | TEFLON | COPPER GOLD PL .00001 MIN OVER NICKEL PL .00005 MIN OVER COPPER PL .00005 MIN | STAINLESS STEEL GOLD PL .00001 MIN OVER NICKEL PL .00005 MIN OVER | STAINLESS STEEL GOLD PL .00001 MIN OVER NICKEL PL .00005 MIN OVER | POLYOLEFIN COLOR: BLACK |
| 141-0304-412 | STAINLESS STEEL PASSIVATED | BERYLLIUM COPPER GOLD PL .00005 MIN OVER NICKEL PL .00005 MIN OVER COPPER PL .00005 MIN | TEFLON | COPPER NICKEL PL .0001 MIN OVER COPPER PL .00005 MIN | STAINLESS STEEL PASSIVATED | STAINLESS STEEL PASSIVATED | POLYOLEFIN COLOR: BLACK |

| | |
|--|--|
| DRAWING NO. C - 141-0304-411/420 | |
| 0 | REVISIONS |
| ENGINEERING RELEASE | |
| 1 | 8-7-92 R H I A K T R J B P A H 8-18-92 ECO 41155 |
| ADDED: ITEM 7 042-0241-534 HEAT SHRINK OTE 4: CHANGED: NOTE 5 WAS NOTE 4 | |
| 2 | 10-6-92 R H I A K T R J B P A H 10-29-92 ECO 41308 |
| CHANGED: .018 MAX WAS .016 MAX UPDATED GRAPHICS | |
| ***** * REVISION NUMBER FOLLOWED BY AN ALPHA * * CHARACTER INDICATES DRAWING CLARIFI- * * CATION OR PART NUMBER ADDITION ONLY. * ***** | |
| 2a | 1-31-95 R H I A K T R J B P A H ECN 43184 |
| GRAPHICS & VERSION UPDATE | |
| 3 | 12-19-05 P A T S B D P D W 5-12-06 ECN 50084 |



NOTES:

SPECIFICATIONS:

IMPEDANCE: 50 OHMS
 FREQUENCY RANGE: 0-12.4 GHz
 VSWR: 1.15+.02 F MAX (F IN GHz)
 WORKING VOLTAGE: 250 VRMS MAX AT SEA LEVEL
 DIELECTRIC WITHSTANDING VOLTAGE: 750 VRMS MIN AT SEA LEVEL
 INSULATION RESISTANCE: 5000 MEGOHM MIN
 CONTACT RESISTANCE:
 CENTER CONTACT - INITIAL 3.0 MILLIOHM MAX, AFTER ENVIRONMENTAL 4.0 MILLIOHM MAX
 OUTER CONDUCTOR - INITIAL 2.0 MILLIOHM MAX AFTER ENVIRONMENTAL NOT APPLICABLE
 BODY TO CABLE - 0.5 MILLIOHM MAX (GOLD PLATED) 5.0 MILLIOHM MAX (PASSIVATED)
 CORONA LEVEL: 190 VOLTS MIN AT 70,000 FEET
 INSERTION LOSS: .06√F dB MAX (F IN GHz) AT 6 GHz
 RF LEAKAGE: -60 DB MIN AT 2.5 GHz
 RF HIGH POTENTIAL WITHSTANDING VOLTAGE: 500 VRMS MIN AT 4 AND 7 MHz

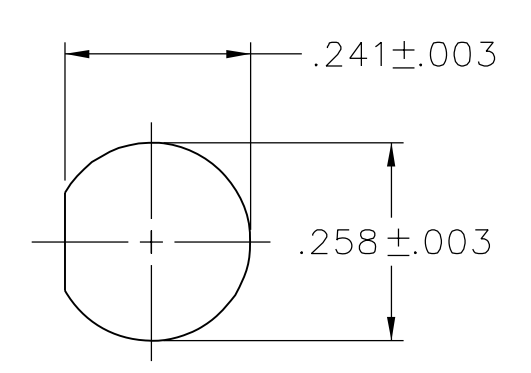
MECHANICAL:

ENGAGE/DISENGAGE TORQUE: 2 IN-LBS MAX
 MATING TORQUE: 7-10 IN-LBS
 COUPLING PROOF TORQUE: NOT APPLICABLE
 COUPLING NUT RETENTION: NOT APPLICABLE
 CONTACT RETENTION: 6 LBS MIN
 CABLE ACCEPTABILITY: RG 316/U DOUBLE SHIELDED
 RG 188/U DOUBLE SHIELDED
 CABLE HEX CRIMP SIZE: .151
 CONTACT CRIMP TOOL: MIL M22520/1-01
 CABLE RETENTION: 20 LBS MIN AXIAL FORCE
 DURABILITY: 500 CYCLES MIN

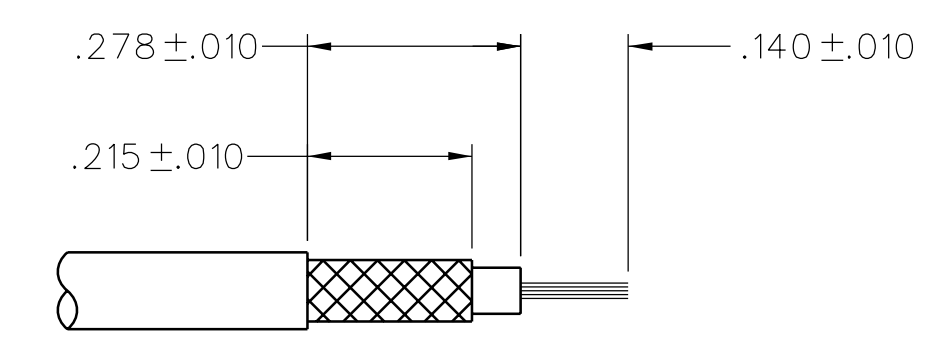
ENVIRONMENTAL:

(MEETS OR EXCEEDS THE APPLICABLE PARAGRAPH OF MIL-PRF-39012)
 THERMAL SHOCK: MIL-STD-202, METHOD 107, CONDITION B, EXCEPT 85 C HIGH TEMP
 OPERATING TEMPERATURE: -85 C TO 165 C
 CORROSION: MIL-STD-202, METHOD 101, CONDITION B
 SHOCK: MIL-STD-202, METHOD 213, CONDITION I
 VIBRATION: MIL-STD-202, METHOD 204, CONDITION D
 MOISTURE RESISTANCE: MIL-STD-202, METHOD 106

2X HEX .312



MOUNTING HOLE
4:1



CABLE STRIP DIMENSIONS
4:1

CUSTOMER DRAWING

THIS DRAWING TO BE INTERPRETED PER ASME Y 14.5M - 1994

"μSTATION"

COMPANY CONFIDENTIAL

| | | | | |
|--------------------------------------|-------------------------|-----------------|--|--|
| TOLERANCE UNLESS OTHERWISE SPECIFIED | DRAWN BY TAK | DATE 7-1-92 | | Cinch Connectivity Solutions P.O. Box 1732 Waseca, MN 56093 1-800-247-8256 |
| DECIMALS _____ mm _____ | CHECKED BY | DATE | | |
| .XXX _____ | APPROVED BY RJB/TAK | DATE 8-17-92 | TITLE JACK ASSEMBLY, STRAIGHT CABLED BULKHEAD SMA, RG 316 DOUBLE SHIELDED | |
| MATL _____ | RELEASE DATE 8-18-92 | U/M INCH | SHEET 2 OF 2 | DRAWING NO. C - 141-0304-411/420 |
| FINISH _____ | SCALE 10:1 | | | |