



Chipsmall Limited consists of a professional team with an average of over 10 year of expertise in the distribution of electronic components. Based in Hongkong, we have already established firm and mutual-benefit business relationships with customers from,Europe,America and south Asia,supplying obsolete and hard-to-find components to meet their specific needs.

With the principle of “Quality Parts,Customers Priority,Honest Operation,and Considerate Service”,our business mainly focus on the distribution of electronic components. Line cards we deal with include Microchip,ALPS,ROHM,Xilinx,Pulse,ON,Everlight and Freescale. Main products comprise IC,Modules,Potentiometer,IC Socket,Relay,Connector.Our parts cover such applications as commercial,industrial, and automotives areas.

We are looking forward to setting up business relationship with you and hope to provide you with the best service and solution. Let us make a better world for our industry!



Contact us

Tel: +86-755-8981 8866 Fax: +86-755-8427 6832

Email & Skype: info@chipsmall.com Web: www.chipsmall.com

Address: A1208, Overseas Decoration Building, #122 Zhenhua RD., Futian, Shenzhen, China



Housing - HC-D 7-AML-26/GW/PA BK - 1410686

Please be informed that the data shown in this PDF Document is generated from our Online Catalog. Please find the complete data in the user's documentation. Our General Terms of Use for Downloads are valid (<http://phoenixcontact.com/download>)



HEAVYCON D7 panel mounting base, with single locking latch, height: 25.5 mm, angled, PA, color: black



Key Commercial Data

Packing unit	1 STK
Weight per Piece (excluding packing)	26.0 g
Custom tariff number	85389099
Country of origin	Germany

Technical data

Dimensions

Height	25.5 mm
Width	40.5 mm
Length	38 mm
Length of the assembly cutout	21.5 mm
Width of the assembly cutout	21.5 mm

Ambient conditions

Degree of protection of housing (IP)	IP54
	IP65 (with sealing screw)
Ambient temperature (operation)	-40 °C ... 125 °C

General

Note	For contact inserts HC-D7, D8, A3, A4, B5, HS2-D7
Size	D7
Housing type	Panel mounting base

Housing - HC-D 7-AML-26/GW/PA BK - 1410686

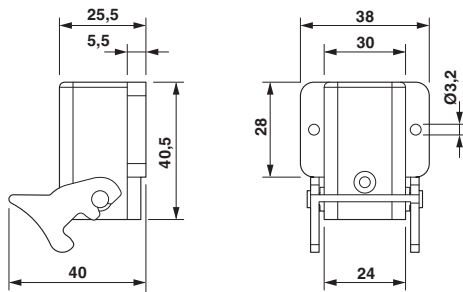
Technical data

General

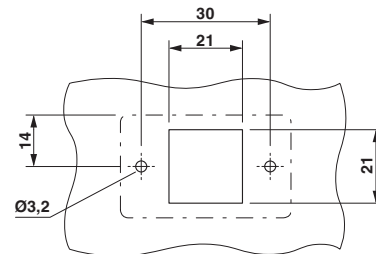
Locking type	With single locking latch
Screw connection	none
Housing material	Polyamide
Seal material	NBR
Material lock	Polyamide

Drawings

Dimensional drawing



Dimensional drawing



Panel cutout

Dimensional drawing

Classifications

eCl@ss

eCl@ss 4.0	27140816
eCl@ss 4.1	27140816
eCl@ss 5.0	27143424
eCl@ss 5.1	27143424
eCl@ss 6.0	27143424
eCl@ss 7.0	27440209
eCl@ss 8.0	27440202
eCl@ss 9.0	27440202

ETIM

ETIM 3.0	EC000437
ETIM 5.0	EC000437

UNSPSC

UNSPSC 6.01	31261502
UNSPSC 7.0901	31261502

Housing - HC-D 7-AML-26/GW/PA BK - 1410686

Classifications

UNSPSC

UNSPSC 11	31261502
UNSPSC 12.01	31261502
UNSPSC 13.2	31261502

Approvals

Approvals

Approvals

EAC / GL

Ex Approvals

Approvals submitted

Approval details

EAC

GL

Accessories

Accessories

Mounting material

Sealing screw - HC-D 7-DS-IP65 - 1686229



Sealing screw, Size: Countersunk head