



Chipsmall Limited consists of a professional team with an average of over 10 year of expertise in the distribution of electronic components. Based in Hongkong, we have already established firm and mutual-benefit business relationships with customers from,Europe,America and south Asia,supplying obsolete and hard-to-find components to meet their specific needs.

With the principle of “Quality Parts,Customers Priority,Honest Operation,and Considerate Service”,our business mainly focus on the distribution of electronic components. Line cards we deal with include Microchip,ALPS,ROHM,Xilinx,Pulse,ON,Everlight and Freescale. Main products comprise IC,Modules,Potentiometer,IC Socket,Relay,Connector.Our parts cover such applications as commercial,industrial, and automotives areas.

We are looking forward to setting up business relationship with you and hope to provide you with the best service and solution. Let us make a better world for our industry!



Contact us

Tel: +86-755-8981 8866 Fax: +86-755-8427 6832

Email & Skype: info@chipsmall.com Web: www.chipsmall.com

Address: A1208, Overseas Decoration Building, #122 Zhenhua RD., Futian, Shenzhen, China



Housing - HC-HPR-B24-HHWH-1STM40-EM-BK - 1411061

Please be informed that the data shown in this PDF Document is generated from our Online Catalog. Please find the complete data in the user's documentation. Our General Terms of Use for Downloads are valid (<http://phoenixcontact.com/download>)




HEAVYCON B24 sleeve housing, HPR series, with screw locking, with M40 thread, lateral outlet, for increased environmental and EMC requirements

Why buy this product

- ☒ Vibration and shock: IEC 61373/EN 50155, category 1, class 1B

RoHS

Key Commercial Data

| | |
|--------------|---|
| Packing unit | 1 STK |
| GTIN |  4 046356 921664 |
| GTIN | 4046356921664 |

Technical data

Dimensions

| | |
|--------|----------|
| Height | 110.5 mm |
| Width | 59.2 mm |
| Length | 192 mm |

Ambient conditions

| | |
|--------------------------------------|---------------------------|
| Degree of protection of housing (IP) | IP66 |
| | IP68 (0.5 bar / 24 h) |
| | IP69K (ISO 20653:2013-02) |
| Ambient temperature (operation) | -40 °C ... 125 °C |

General

| | |
|--------------|--|
| Note | For contact inserts HC-B24, BB46, BBB64, D64, DD108, M |
| Size | B24 |
| Housing type | Sleeve housing |
| Color | black |
| Locking type | with screw locking |

Housing - HC-HPR-B24-HHWH-1STM40-EM-BK - 1411061

Technical data

General

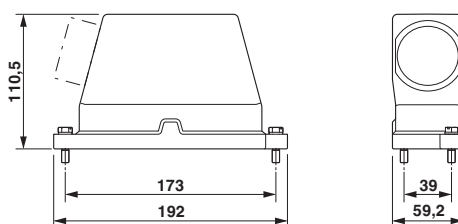
| | |
|------------------------------|--|
| No. of cable outlets | 1 |
| Cable outlet | lateral |
| Screw connection | none |
| Type of the screw connection | 1x M40 |
| Housing material | Aluminum die-cast |
| Housing surface material | Powder-coated, black |
| Material of locking screw | Stainless steel |
| Assembly instructions | M6 locking screw, slotted hexagon head screw (SW10), tightening torque: 4 Nm |

Environmental Product Compliance

| | |
|------------|---|
| China RoHS | Environmentally friendly use period: unlimited = EFUP-e |
| | No hazardous substances above threshold values |

Drawings

Dimensional drawing



Dimensional drawing

Approvals

Approvals

Approvals

GL / EAC

Ex Approvals

Approval details

| | | | |
|----|---|---|------------|
| GL |  | http://exchange.dnv.com/tari/ | 6196614 HH |
|----|---|---|------------|

Housing - HC-HPR-B24-HHWH-1STM40-EM-BK - 1411061

Approvals

EAC



RU C-
DE.AI30.B.01102

Phoenix Contact 2018 © - all rights reserved
<http://www.phoenixcontact.com>

PHOENIX CONTACT GmbH & Co. KG
Flachsmarktstr. 8
32825 Blomberg
Germany
Tel. +49 5235 300
Fax +49 5235 3 41200
<http://www.phoenixcontact.com>