



Chipsmall Limited consists of a professional team with an average of over 10 year of expertise in the distribution of electronic components. Based in Hongkong, we have already established firm and mutual-benefit business relationships with customers from,Europe,America and south Asia,supplying obsolete and hard-to-find components to meet their specific needs.

With the principle of “Quality Parts,Customers Priority,Honest Operation,and Considerate Service”,our business mainly focus on the distribution of electronic components. Line cards we deal with include Microchip,ALPS,ROHM,Xilinx,Pulse,ON,Everlight and Freescale. Main products comprise IC,Modules,Potentiometer,IC Socket,Relay,Connector.Our parts cover such applications as commercial,industrial, and automotives areas.

We are looking forward to setting up business relationship with you and hope to provide you with the best service and solution. Let us make a better world for our industry!



Contact us

Tel: +86-755-8981 8866 Fax: +86-755-8427 6832

Email & Skype: info@chipsmall.com Web: www.chipsmall.com

Address: A1208, Overseas Decoration Building, #122 Zhenhua RD., Futian, Shenzhen, China



LOC		DIST		REVISIONS						
CM		00		P	LTR	DESCRIPTION	DATE	DWN	APVD	
					C	REVISED PER ECO-12-009789	09OCT2012	KH	SM	

- 1

MATERIAL:

HEADER- NYLON 4/6, HIGH TEMPERATURE, UL94V-0

POST: COPPER ALLOY

CAVITY CARRIER TAPE: BLACK CONDUCTIVE POLYCARBONATE

COVER TAPE: POLYESTER FILM TAPE.
- 2

FINISH:

HOUSING: COLOR, BLACK

POST: 0.00381 [.000015] GOLD OVER NICKEL.
- 3

POSTS TO WITHSTAND 13 NEWTONS [3 LBS] MIN AXIAL FORCE IN THIS DIRECTION WITHOUT DISLODGING, BEFORE SOLDERING.
- 4

POSTS SOLDERTAILS MUST COMPLY WITH AMP SOLDERABILITY SPEC 109-11-2.
- 5

MEASURED AT -A-.
- 6

APPLIES WHEN HEADER IS HELD STRAIGHT.
- 7

COORDINATE DIMENSION APPLIES FROM CENTER OF ACTUAL FEATURE.
- 8

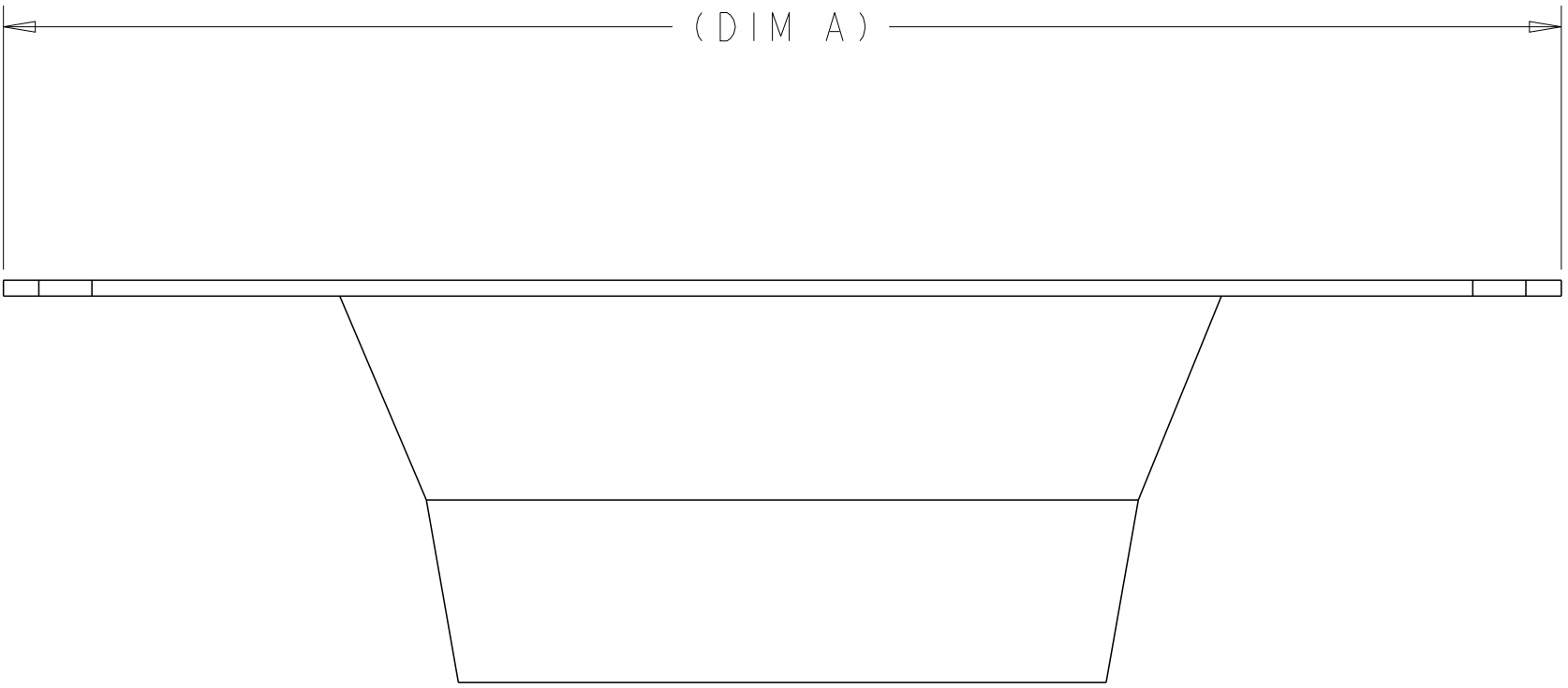
DIMENSIONS APPLY TO THE COMPONENT SIDE OF BOARD.
- 9

MAXIMUM TEMPERATURE EXPOSURE DURING REFLOW SOLDERING NOT TO EXCEED 280°C [536°F].
10.

HEADERS ARE SUPPLIED ON A 330.2mm [13 INCH] DIAMETER REEL,WITH 225 PARTS PER REEL. THE CAVITY CARRIER TAPE HOLDS 1 PART PER POCKET,ORIENTED AS SHOWN.
- 11



AMP LOGO,UL AND CSA TRADEMARKS TO APPEAR ON THIS SURFACE.
- 12

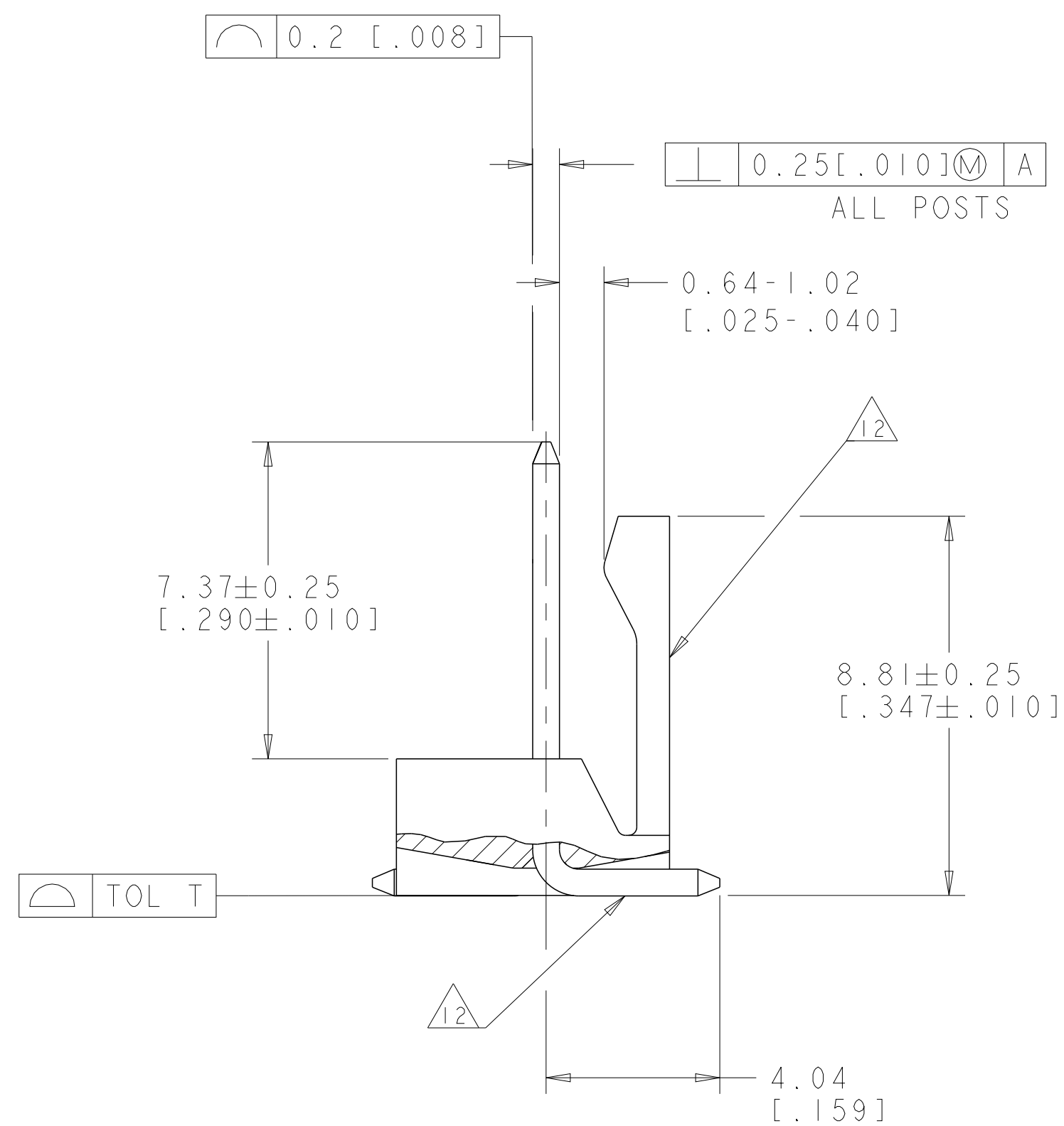
MATTE TIN 0.00381 [.000150] MIN THICK ON SOLDER TAIL.



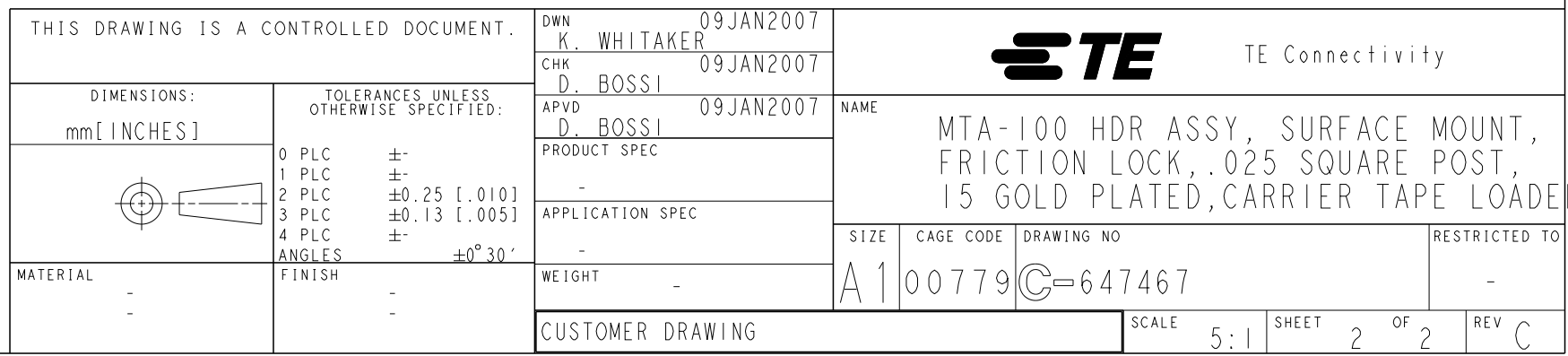
3-647467-7 SHOWN

SEE SHEET 2 FOR
PART NUMBER TABLE

THIS DRAWING IS A CONTROLLED DOCUMENT.		DWN K. WHITAKER 09JAN2007	 TE Connectivity	
DIMENSIONS: mm[INCHES]		CHK D. BOSSI 09JAN2007		
	TOLERANCES UNLESS OTHERWISE SPECIFIED: 0 P L C ± . 1 P L C ± . 2 P L C ± .05 [.010] 3 P L C ± .13 [.005] 4 P L C ± . ANGLES ± 30°	APVD D. BOSSI 09JAN2007	NAME MTA-100 HDR ASSY, SURFACE MOUNT, FRICTION LOCK, .025 SQUARE POST, 15 GOLD PLATED,CARRIER TAPE LOADE	
		PRODUCT SPEC		
		APPLICATION SPEC		
		SIZE CAGE CODE DRAWING NO		
MATERIAL	FINISH	WEIGHT	A100779C=647467	RESTRICTED TO
		CUSTOMER DRAWING		SCALE 5:1 SHEET 1 OF 2 REV C



PRELIMINARY	0.2 [.008]	34.25 [1.348]	72.00 [2.835]	45.72 [1.800]	18	4-647467-8
PRELIMINARY	0.2 [.008]	34.25 [1.348]	72.00 [2.835]	43.18 [1.700]	17	4-647467-7
PRELIMINARY	0.2 [.008]	34.25 [1.348]	72.00 [2.835]	40.64 [1.600]	16	4-647467-6
PRELIMINARY	0.2 [.008]	34.25 [1.348]	72.00 [2.835]	38.10 [1.500]	15	4-647467-5
PRELIMINARY	0.2 [.008]	26.20 [1.031]	56.00 [2.205]	35.56 [1.400]	14	4-647467-4
PRELIMINARY	0.2 [.008]	26.20 [1.031]	56.00 [2.205]	33.02 [1.300]	13	4-647467-3
PRELIMINARY	0.15 [.006]	26.20 [1.031]	56.00 [2.205]	30.48 [1.200]	12	4-647467-2
PRELIMINARY	0.15 [.006]	26.20 [1.031]	56.00 [2.205]	27.94 [1.100]	11	4-647467-1
PRELIMINARY	0.15 [.006]	20.20 [.795]	44.00 [1.732]	25.40 [1.00]	10	4-647467-0
PRELIMINARY	0.15 [.006]	20.20 [.795]	44.00 [1.732]	22.86 [.900]	9	3-647467-9
-	0.15 [.006]	20.20 [.795]	44.00 [1.732]	20.32 [.800]	8	3-647467-8
	0.15 [.006]	20.20 [.795]	44.00 [1.732]	17.78 [.700]	7	3-647467-7
	0.15 [.006]	14.20 [.559]	32.00 [1.260]	15.24 [.600]	6	3-647467-6
	0.15 [.006]	14.20 [.559]	32.00 [1.260]	12.70 [.500]	5	3-647467-5
	0.15 [.006]	14.20 [.559]	32.00 [1.260]	10.16 [.400]	4	3-647467-4
	0.15 [.006]	14.20 [.559]	32.00 [1.260]	7.62 [.300]	3	3-647467-3
	0.15 [.006]	11.50 [.453]	24.00 [.945]	5.08 [.200]	2	3-647467-2
PRELIMINARY						
	TOL T	DIM B	DIM A	DIM L	NO. OF POSN	PART NUMBER



4805 (3/11)