



Chipsmall Limited consists of a professional team with an average of over 10 year of expertise in the distribution of electronic components. Based in Hongkong, we have already established firm and mutual-benefit business relationships with customers from,Europe,America and south Asia,supplying obsolete and hard-to-find components to meet their specific needs.

With the principle of “Quality Parts,Customers Priority,Honest Operation,and Considerate Service”,our business mainly focus on the distribution of electronic components. Line cards we deal with include Microchip,ALPS,ROHM,Xilinx,Pulse,ON,Everlight and Freescale. Main products comprise IC,Modules,Potentiometer,IC Socket,Relay,Connector.Our parts cover such applications as commercial,industrial, and automotives areas.

We are looking forward to setting up business relationship with you and hope to provide you with the best service and solution. Let us make a better world for our industry!



## Contact us

Tel: +86-755-8981 8866 Fax: +86-755-8427 6832

Email & Skype: info@chipsmall.com Web: www.chipsmall.com

Address: A1208, Overseas Decoration Building, #122 Zhenhua RD., Futian, Shenzhen, China



## Type 12 Mild Steel Wallmount Enclosure *1418 Series*

Continuous Hinge Door with Clamps



### Application

- Designed to house electrical, electronic, hydraulic or pneumatic controls and instruments.
- Provides a degree of protection from falling dirt, dust, oil and water.

### Standards

- UL 508 Type 12 and 13
- CSA Type 12 and 13
- Complies with
  - NEMA Type 12 and 13
  - JIC EGP-1-1967 unless marked<sup>1</sup>
  - IEC 60529, IP54

### Construction

- Formed 14 gauge steel bodies and doors.
- Smooth, continuously welded seams without knockouts, cutouts or holes.
- Door and body stiffeners are provided in the larger enclosures for extra rigidity.  
Welded brackets provide for enclosure mounting.
- Formed lip on door and enclosure exclude flowing liquids and contaminants.
- Continuously hinged door may be removed by pulling the hinge pin.
- Door is secured with easily operated stainless steel clamps.
- Provision for padlocking.
- Oil resistant gaskets are permanently secured.
- A removable 12 gauge inner panel is included.
- Collar studs are provided for mounting inner panels.
- A bonding stud is provided on the door and a grounding stud is provided in the enclosure.
- A literature pocket is provided for the inside of the door.

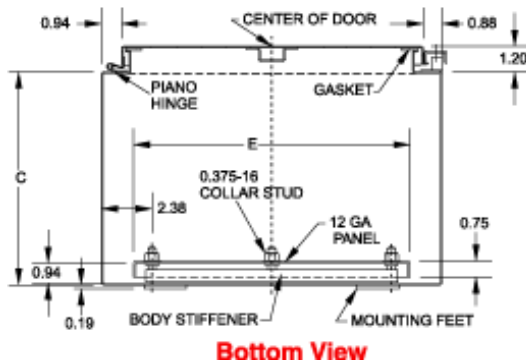
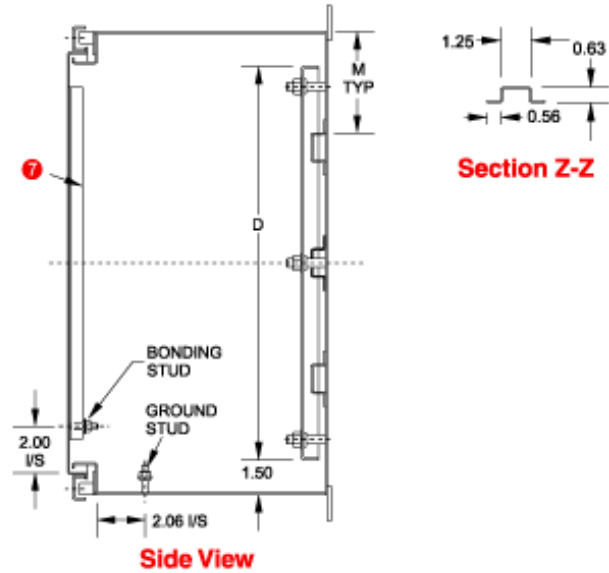
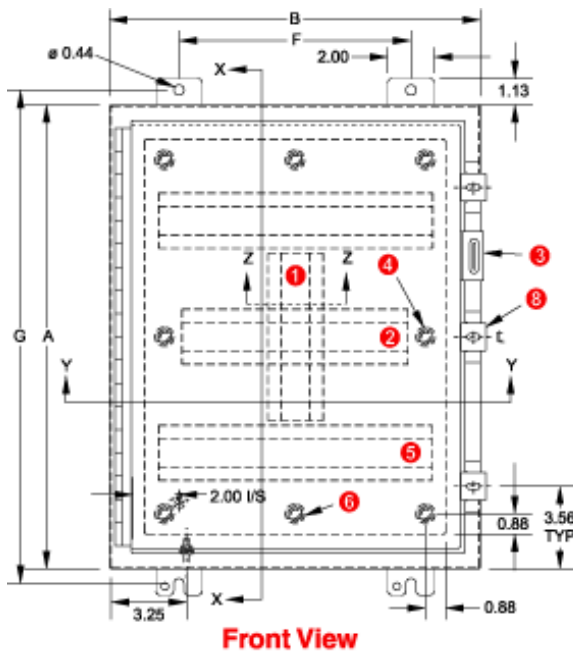
### Finish

- Cover and enclosure are finished in recoatable smooth ANSI 61 gray powder coating on the outside, with white powder coating on the inside.
- Removable inner panel is finished in white powder coating.

### Accessories

- Inner Panels
- Blowers and Fans
- Door Clamping Hardware
- Drip Shield Kit
- Filtered Fans
- Cooling Products
- Ventilation
- Door Stop Kit
- Enclosure Stabilizers
- Floor Stand Kit

- Gland Plates
- Lock kit
- Wallmount Quick Release Clamp
- Terminal Kits
- Window Kits
- Heaters
- Type 1 Louvered Ventilating Plates
- Swing Panel Kit
- Temperature Controls
- Ground Wire Kits



- ❶ Vertical stiffener required on KK, M, MR and LL only.
- ❷ Omit center body stiffener if A is less than 41".
- ❸ Padlocking hasp and staple.
- ❹ Omit 2 middle studs if A is less than 31".
- ❺ Omit body stiffeners if A or B is less than 29".
- ❻ Omit 2 middle studs if B is less than 31".
- ❼ Omit door stiffener if A or B is less than 31" except if AxB is 42"x30", 48"x30" or 72"x30".
- ❽ Omit if A is less than 48".

Part No.	Panel Size			Centers				Ship Wt. (lbs)
	A	B	C	D	E	F	G	
1418A6	12.00	24.00	6.00	9.00	21.00	18.00	13.25	34
1418B6	16.00	12.00	6.00	13.00	9.00	9.50	17.25	26
1418G6	16.00	16.00	6.00	13.00	13.00	10.00	17.25	32
1418CR6	16.00	20.00	6.00	13.00	17.00	14.00	17.25	38
1418CA6	20.00	12.00	6.00	17.00	9.00	9.50	21.25	32
1418C6	20.00	16.00	6.00	17.00	13.00	10.00	21.25	38
1418D6	20.00	20.00	6.00	17.00	17.00	14.00	21.25	48
1418ER6	20.00	24.00	6.00	17.00	21.00	18.00	21.25	54
1418AR6	24.00	12.00	6.00	21.00	9.00	9.50	25.25	36
1418H6	24.00	16.00	6.00	21.00	13.00	10.00	25.25	46
1418E6	24.00	20.00	6.00	21.00	17.00	14.00	25.25	54
1418J6	24.00	24.00	6.00	21.00	21.00	18.00	25.25	62
1418FG6	30.00	16.00	6.00	27.00	13.00	10.00	31.25	56
1418F6	30.00	20.00	6.00	27.00	17.00	14.00	31.25	66
1418K6	30.00	24.00	6.00	27.00	21.00	18.00	31.25	76

Part No.	Panel Size				Centers		Ship Wt. (lbs)	
	A	B	C	D	E	F		G
1418L6	36.00	24.00	6.00	33.00	21.00	18.00	37.25	91
1418M6	36.00	30.00	6.00	33.00	27.00	24.00	37.25	114
1418A8	12.00	24.00	8.00	9.00	21.00	18.00	13.25	38
1418B8	16.00	12.00	8.00	13.00	9.00	9.50	17.25	28
1418G8	16.00	16.00	8.00	13.00	13.00	10.00	17.25	34
1418CR8	16.00	20.00	8.00	13.00	17.00	14.00	17.25	43
1418CA8	20.00	12.00	8.00	17.00	9.00	9.50	21.25	35
1418C8	20.00	16.00	8.00	17.00	13.00	10.00	21.25	40
1418D8	20.00	20.00	8.00	17.00	17.00	14.00	21.25	48
1418ER8	20.00	24.00	8.00	17.00	21.00	18.00	21.25	61
1418AR8	24.00	12.00	8.00	21.00	9.00	9.50	25.25	40
1418H8	24.00	16.00	8.00	21.00	13.00	10.00	25.25	50
1418E8	24.00	20.00	8.00	21.00	17.00	14.00	25.25	58
1418J8	24.00	24.00	8.00	21.00	21.00	18.00	25.25	68
1418KR8	24.00	30.00	8.00	21.00	27.00	24.00	25.25	82
1418KA8	30.00	12.00	8.00	27.00	9.00	9.50	31.25	50
1418KG8	30.00	16.00	8.00	27.00	13.00	10.00	31.25	60
1418F8	30.00	20.00	8.00	27.00	17.00	14.00	31.25	70
1418K8	30.00	24.00	8.00	27.00	21.00	18.00	31.25	82
1418KK8	30.00	30.00	8.00	27.00	27.00	24.00	31.25	102
1418MR8	30.00	36.00	8.00	27.00	33.00	30.00	31.25	124
1418L8	36.00	24.00	8.00	33.00	21.00	18.00	37.25	96
1418M8	36.00	30.00	8.00	33.00	27.00	24.00	37.25	120
1418LL8 <sup>1</sup>	36.00	36.00	8.00	33.00	33.00	30.00	37.25	142
1418N8	42.00	24.00	8.00	39.00	21.00	18.00	43.25	110
1418O8 <sup>1</sup>	42.00	30.00	8.00	39.00	27.00	24.00	43.25	132
1418P8 <sup>1</sup>	42.00	36.00	8.00	39.00	33.00	30.00	43.25	182
1418Q8	48.00	24.00	8.00	45.00	21.00	18.00	49.25	122
1418R8 <sup>1</sup>	48.00	30.00	8.00	45.00	27.00	24.00	49.25	173
1418S8 <sup>1</sup>	48.00	36.00	8.00	45.00	33.00	30.00	49.25	201
1418T8 <sup>1</sup>	60.00	36.00	8.00	57.00	33.00	30.00	61.25	246
1418B10	16.00	12.00	10.00	13.00	9.00	9.50	17.25	30
1418C10	20.00	16.00	10.00	17.00	13.00	10.00	21.25	44
1418D10	20.00	20.00	10.00	17.00	17.00	14.00	21.25	52
1418AR10	24.00	12.00	10.00	21.00	9.00	9.50	25.25	42
1418E10	24.00	20.00	10.00	21.00	17.00	14.00	25.25	64
1418J10	24.00	24.00	10.00	21.00	21.00	18.00	25.25	73
1418F10	30.00	20.00	10.00	27.00	17.00	14.00	31.25	76
1418K10	30.00	24.00	10.00	27.00	21.00	18.00	31.25	86
1418L10	36.00	24.00	10.00	33.00	21.00	18.00	37.25	105
1418M10	36.00	30.00	10.00	33.00	27.00	24.00	37.25	124
1418O10 <sup>1</sup>	42.00	30.00	10.00	39.00	27.00	24.00	43.25	140
1418P10 <sup>1</sup>	42.00	36.00	10.00	39.00	33.00	30.00	43.25	192
1418R10 <sup>1</sup>	48.00	30.00	10.00	45.00	27.00	24.00	49.25	162
1418S10 <sup>1</sup>	48.00	36.00	10.00	45.00	33.00	30.00	49.25	208
1418T10 <sup>1</sup>	60.00	36.00	10.00	57.00	33.00	30.00	61.25	258
1418C12	20.00	16.00	12.00	17.00	13.00	10.00	21.25	48
1418E12	24.00	20.00	12.00	21.00	17.00	14.00	25.25	68
1418J12	24.00	24.00	12.00	21.00	21.00	18.00	25.25	76
1418K12	30.00	24.00	12.00	27.00	21.00	18.00	31.25	90
1418KK12	30.00	30.00	12.00	27.00	27.00	24.00	31.25	114
1418L12	36.00	24.00	12.00	33.00	21.00	18.00	37.25	108
1418M12	36.00	30.00	12.00	33.00	27.00	24.00	37.25	132
1418LL12 <sup>1</sup>	36.00	36.00	12.00	33.00	33.00	30.00	37.25	156

Part No.	Panel Size					Centers		Ship Wt. (lbs)
	A	B	C	D	E	F	G	
1418O12 <sup>1</sup>	42.00	30.00	12.00	39.00	27.00	24.00	43.25	150
1418P12 <sup>1</sup>	42.00	36.00	12.00	39.00	33.00	30.00	43.25	198
1418S12 <sup>1</sup>	48.00	36.00	12.00	45.00	33.00	30.00	49.25	222
1418T12 <sup>1</sup>	60.00	36.00	12.00	57.00	33.00	30.00	61.25	264
1418U12 <sup>1</sup>	72.00	30.00	12.00	69.00	27.00	24.00	73.25	272
1418V12	72.00	36.00	12.00	69.00	33.00	30.00	73.25	312
1418E16	24.00	20.00	16.00	21.00	17.00	14.00	25.25	74
1418J16	24.00	24.00	16.00	21.00	21.00	18.00	25.25	86
1418K16	30.00	24.00	16.00	27.00	21.00	18.00	31.25	102
1418M16	36.00	30.00	16.00	33.00	27.00	24.00	37.25	140
1418P16 <sup>1</sup>	42.00	36.00	16.00	39.00	33.00	30.00	43.25	214
1418S16 <sup>1</sup>	48.00	36.00	16.00	45.00	33.00	30.00	49.25	238
1418T16 <sup>1</sup>	60.00	36.00	16.00	57.00	33.00	30.00	61.25	290
1418U16 <sup>1</sup>	72.00	30.00	16.00	69.00	27.00	24.00	73.25	290
1418K20	30.00	24.00	20.00	27.00	21.00	18.00	31.25	112
1418M20	36.00	30.00	20.00	33.00	27.00	24.00	37.25	152
1418S20 <sup>1</sup>	48.00	36.00	20.00	45.00	33.00	30.00	49.25	256
1418T20 <sup>1</sup>	60.00	36.00	20.00	57.00	33.00	30.00	61.25	300
1418U20 <sup>1</sup>	72.00	30.00	20.00	69.00	27.00	24.00	73.25	308
1418K24	30.00	24.00	24.00	27.00	21.00	18.00	31.25	142
1418U24 <sup>1</sup>	72.00	30.00	24.00	69.00	27.00	24.00	73.25	332

<sup>1</sup> Does not meet JIC requirements

*Data subject to change without notice*

© 2017. Hammond Manufacturing Ltd. All rights reserved.