



Chipsmall Limited consists of a professional team with an average of over 10 year of expertise in the distribution of electronic components. Based in Hongkong, we have already established firm and mutual-benefit business relationships with customers from,Europe,America and south Asia,supplying obsolete and hard-to-find components to meet their specific needs.

With the principle of “Quality Parts,Customers Priority,Honest Operation,and Considerate Service”,our business mainly focus on the distribution of electronic components. Line cards we deal with include Microchip,ALPS,ROHM,Xilinx,Pulse,ON,Everlight and Freescale. Main products comprise IC,Modules,Potentiometer,IC Socket,Relay,Connector.Our parts cover such applications as commercial,industrial, and automotives areas.

We are looking forward to setting up business relationship with you and hope to provide you with the best service and solution. Let us make a better world for our industry!



Contact us

Tel: +86-755-8981 8866 Fax: +86-755-8427 6832

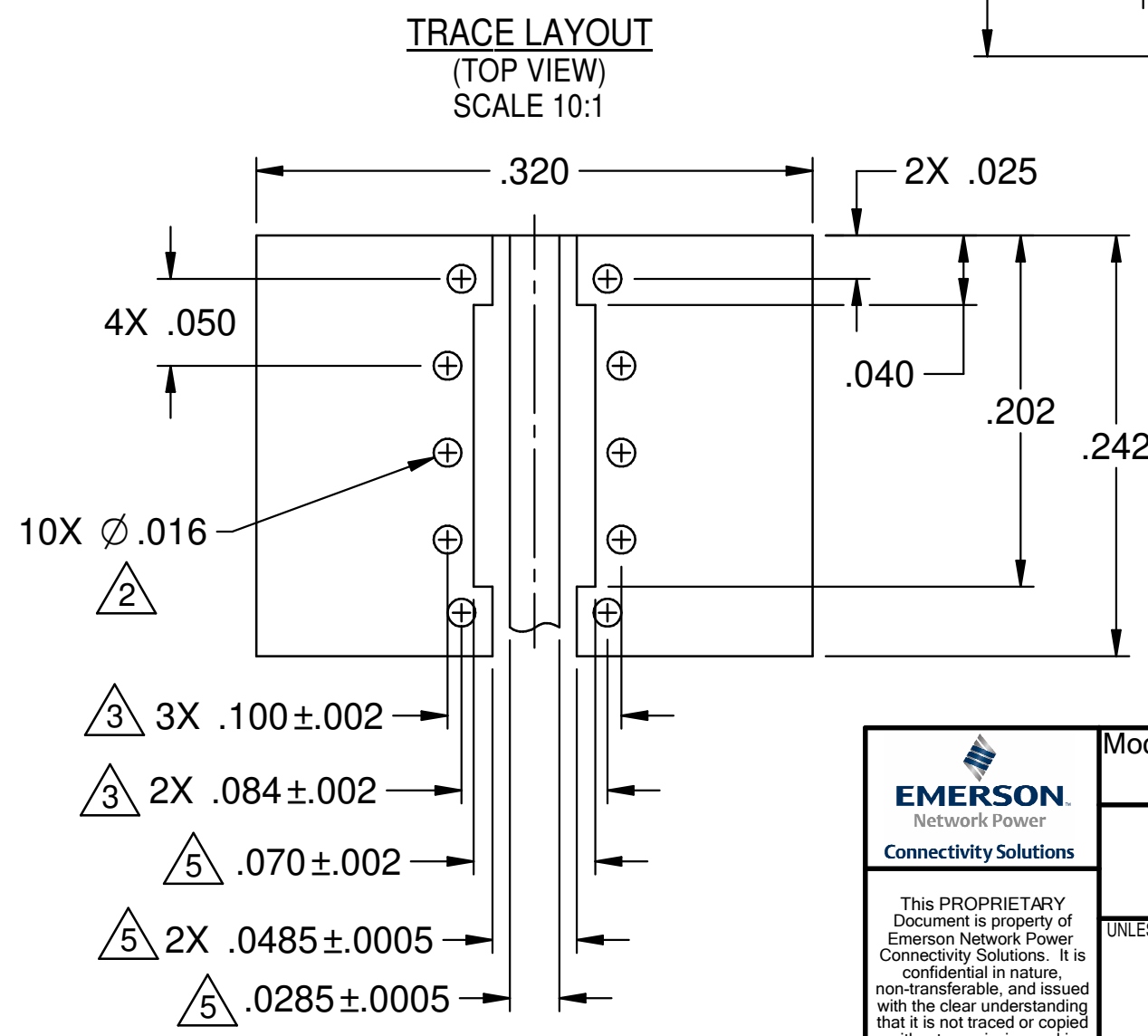
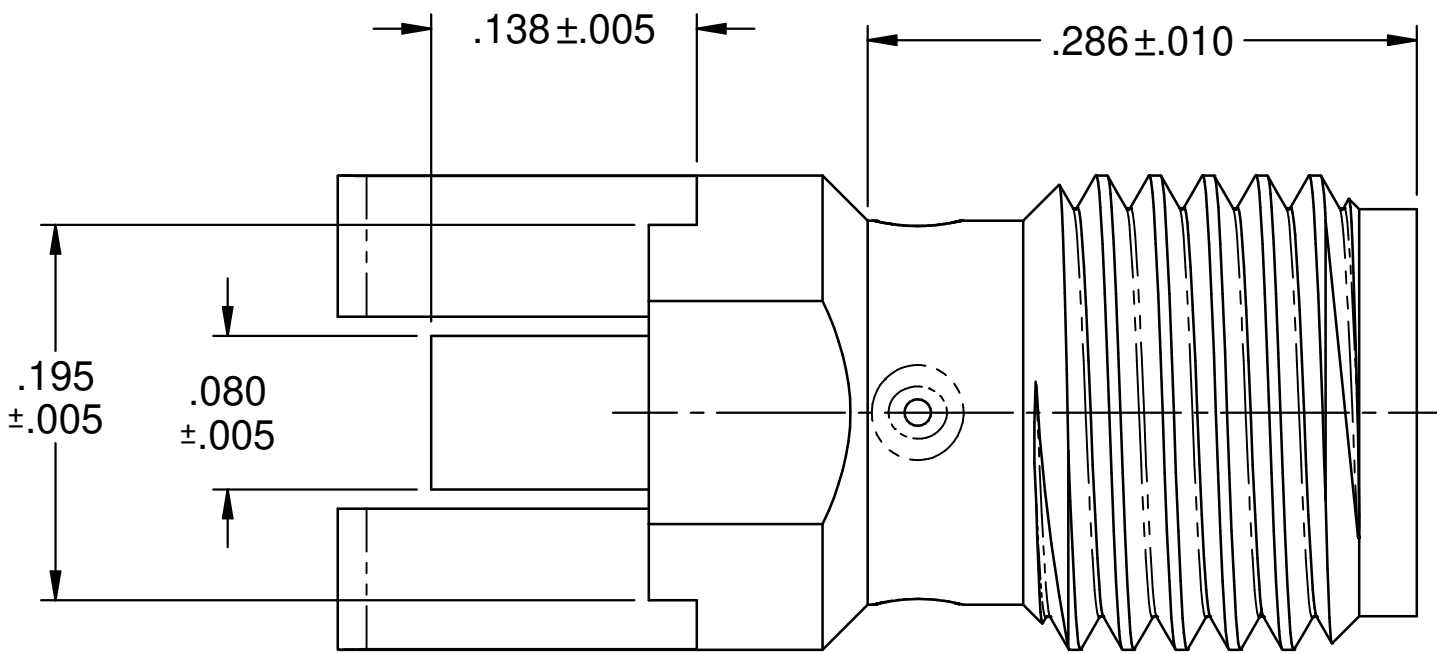
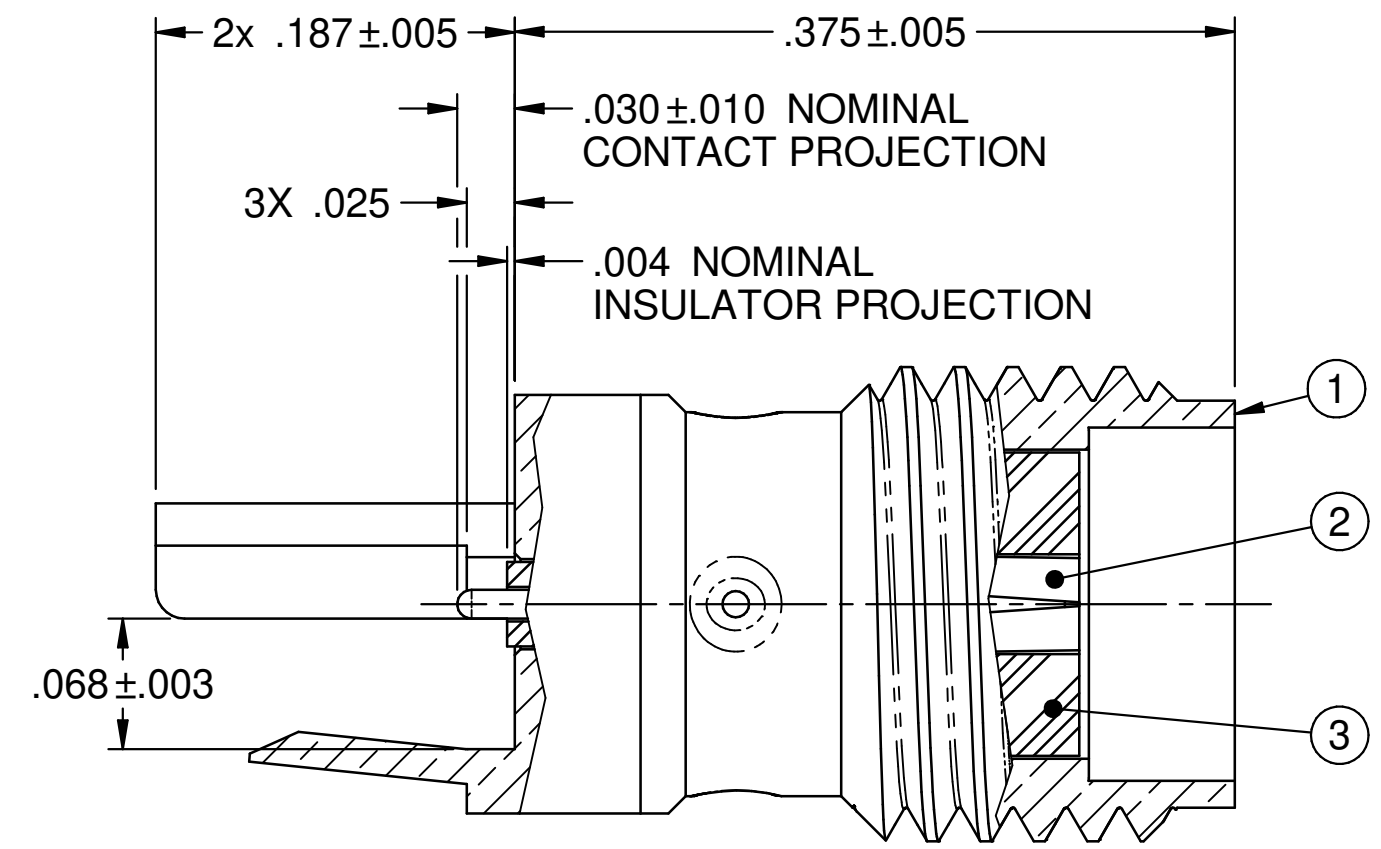
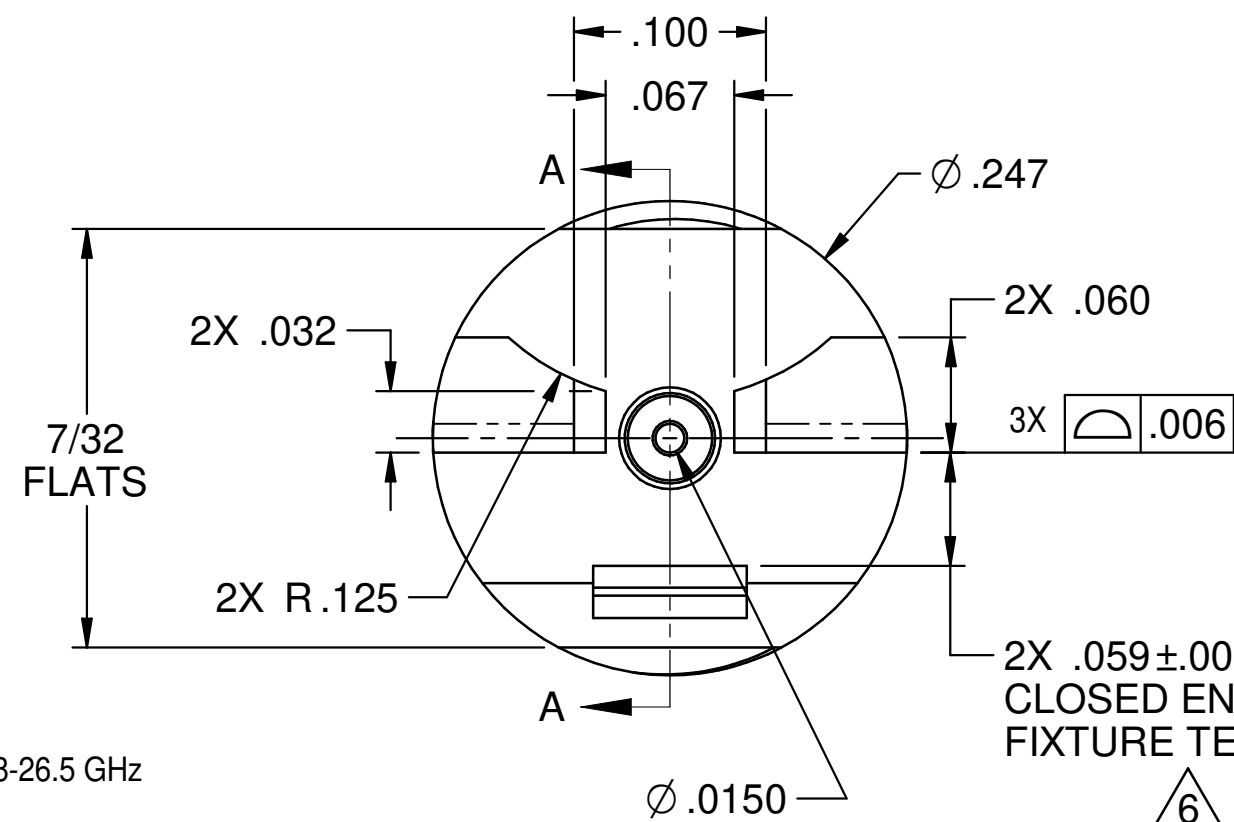
Email & Skype: info@chipsmall.com Web: www.chipsmall.com

Address: A1208, Overseas Decoration Building, #122 Zhenhua RD., Futian, Shenzhen, China



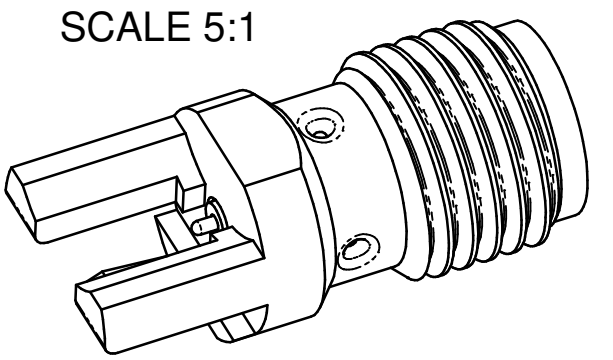
PART NUMBER	ITEM 1 BODY	ITEM 2 CONTACT	ITEM 3 INSULATOR
142-1701-821	BRASS GOLD PL .00001 MIN OVER NICKEL PL .00005 MIN OVER COPPER PL .00005 MIN	BERYLLIUM COPPER GOLD PL .00005 MIN OVER NICKEL PL .00005 MIN OVER COPPER PL .00005 MIN	TEFLON

ZONE	REV	ECO	DESCRIPTION	APPR.	DATE
	1	53056		TAK	10/13/09
	1A	53965		TAK	1/16/12



TYPICAL MICROSTRIP TOPSIDE LAYOUT

.062" THICK BOARD
FR4 BOARD
DOUBLE SIDED 1 OZ COPPER
FULL UNDERSIDE GROUND PLANE
ALL DIMENSIONS ARE REFERENCE
APPLICATIONS REQUIRE OPTIMIZATION



NOTES: UNLESS OTHERWISE SPECIFIED.

- SPECIFICATIONS:
 - ELECTRICAL:
 - IMPEDANCE: 50 OHMS
 - FREQUENCY RANGE: 0-26.5 GHz
 - VSWR: 1.05+.02F(GHz) MAX AT 0-18 GHz, TYPICALLY < 1.50 AT 18-26.5 GHz
 - WORKING VOLTAGE: 170 VRMS MAX AT SEA LEVEL
 - DIELECTRIC WITHSTANDING VOLTAGE: 500 VRMS MIN AT SEAL LEVEL
 - INSULATION RESISTANCE: 1000 MEGOHMS
 - CONTACT RESISTANCE: CENTER CONTACT - INITIAL 3.0 MILLIOHMS MAX, AFTER ENVIRONMENTAL - 4.0 MILLIOHMS MAX
 - OUTER CONDUCTOR - INITIAL 2.0 MILLIOHMS MAX AFTER ENVIRONMENTAL - N/A
 - CORONA LEVEL: 125 VOLTS MIN AT 70,000 FEET
 - INSERTION LOSS: N/A (DEPENDANT UPON APPLICATION)
 - RF HIGH POTENTIAL WITHSTANDING VOLTAGE: 335 VRMS MIN AT 4 AND 7 MHz
- MECHANICAL:
 - ENGAGEMENT/DISENGAGEMENT TORQUE: 2 INCH POUNDS MAX
 - MATING TORQUE: 7-10 INCH POUNDS WHEN BODY SUPPORTED WITH WRENCH
 - CONTACT RETENTION: 6 LBS MIN AXIAL FORCE
 - 4 OZ-IN MIN RADIAL TORQUE
 - DURABILITY: 500 CYCLES MIN
- ENVIRONMENTAL:
 - (MEETS OR EXCEEDS THE APPLICABLE PARAGRAPH OF MIL-PRF-39012)
 - THERMAL SHOCK: MIL-STS-202, METHOD 107, CONDITION B EXCEPT 115°C HIGH TEMP
 - OPERATING TEMPERATURE: -65°C TO 165°C
 - CORROSION: MIL-STD-202, METHOD 101, CONDITION B
 - SHOCK: MIL-STD-202, METHOD 213, CONDITION I
 - VIBRATION: MIL-STD-202, METHOD 204, CONDITION D
 - MOISTURE RESISTANCE: MIL-STD-202, METHOD 106

- ALL HOLES PLATED THRU ENTIRE CIRCUIT BOARD STACKUP.
- HOLE PATTERNS SYMMETRICAL ABOUT CENTER OF CPW TRACE.
- FOR OPTIMUM CIRCUIT BOARD HIGH FREQUENCY PROFORMANCE:
 - A. MAINTAIN SOLID GROUND PLANE BELOW HIGH FREQUENCY SUBSTRATE.
 - B. CONTROL PULLBACK OF TRACE AND GROUND FROM BOARD EDGE.
 - C. CONTINUE GROUNDED COPLANAR LINE BEYOND GROUND PADS.
 - D. PLACE 16 MIL DIA GROUND VIAS ON BOTH SIDES OF COPLANAR WAVEGUIDE LINE AT 50 MIL INTERVALS ALONG ENTIRE LENGTH.
 - E. IMMERSION GOLD PLATE (ENIG) ALL CONDUCTORS PER IPC-4552.
- REFERENCE DIMENSIONS FOR 50 OHM GROUNDED CPW LINE, USING ROGERS R04003, 16 MIL HIGH FREQUENCY CIRCUIT BOARD SUBSTRATE:
 - TRACE WIDTH - 28.5 MILS
 - GROUND GAPS - 10 MILS
 - CONDUCTOR THICKNESS - 1.4 MIL (INCLUDES PLATING)
- ALL TERMINALS SHALL BE SOLDERED TO CIRCUIT BOARD.

<p>This PROPRIETARY Document is property of Emerson Network Power Connectivity Solutions. It is confidential in nature, non-transferable, and issued with the clear understanding that it is not traced or copied without permission and is returnable upon demand.</p>	Model No. 142-1701-821/830	JOHNSON		
	Cage Code 34078	Title SMA JACK SELF FIXTURE END LAUNCH	Material	
	3RD ANGLE PROJECTION 	Drawing No. 142-1701-821/830	Rev. 1A	Finish
	UNLESS OTHERWISE SPECIFIED UNITS: INCHES .XX ± .01 .XXX ± .003 .XXXX ± .0010 ANGLES ± 1°00'	Drawn by TAK	Date 9/13/09	Size C
	Approved by TAK	Date 10/13/09	DO NOT SCALE DRAWING	
		Scale 10:1	Sheet 1 of 2	