



Chipsmall Limited consists of a professional team with an average of over 10 year of expertise in the distribution of electronic components. Based in Hongkong, we have already established firm and mutual-benefit business relationships with customers from,Europe,America and south Asia,supplying obsolete and hard-to-find components to meet their specific needs.

With the principle of “Quality Parts,Customers Priority,Honest Operation,and Considerate Service”,our business mainly focus on the distribution of electronic components. Line cards we deal with include Microchip,ALPS,ROHM,Xilinx,Pulse,ON,Everlight and Freescale. Main products comprise IC,Modules,Potentiometer,IC Socket,Relay,Connector.Our parts cover such applications as commercial,industrial, and automotives areas.

We are looking forward to setting up business relationship with you and hope to provide you with the best service and solution. Let us make a better world for our industry!



Contact us

Tel: +86-755-8981 8866 Fax: +86-755-8427 6832

Email & Skype: info@chipsmall.com Web: www.chipsmall.com

Address: A1208, Overseas Decoration Building, #122 Zhenhua RD., Futian, Shenzhen, China



NOTES:

I. MATERIAL AND FINISH:
BODY - BRASS, GOLD PLATING

THIRD ANGLE PROJ. 	REVISIONS				
	REV	DESCRIPTION	DATE	ECO	APPR
	A	UPDATE DRAWING FORAMT	05-Jun-03	-----	GRS
	C	SYNC THE DRAWING, UPDATE DRAWING FORMAT	14-Apr-15	50476	BG/MZ

1. MATERIAL AND FINISH:

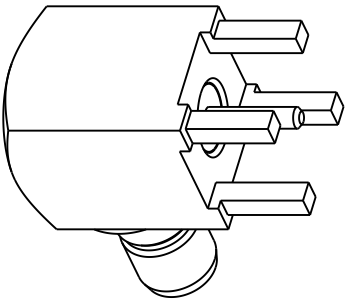
BODY - BRASS, GOLD PLATING
CONTACT - BRASS, GOLD PLATING
INSULATOR - PTFE, NATURAL

2. ELECTRICAL:

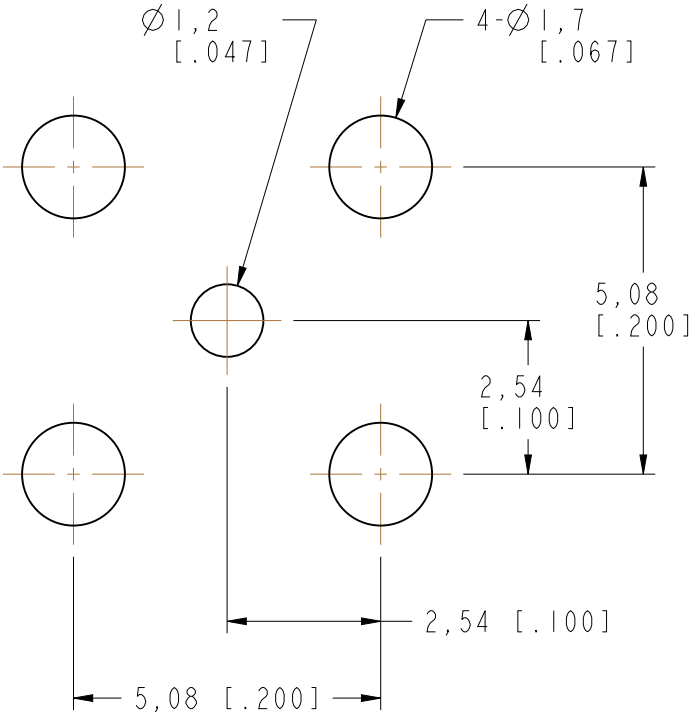
A. IMPEDANCE: 50 OHM, NOMINAL
B. FREQUENCY RANGE: 0-4 GHz
C. VSWR (RETURN LOSS): 1.200 (-20.8 dB) MAX.
D. D.W.V: 1000 VRMS. MIN.

3. MECHANICAL:

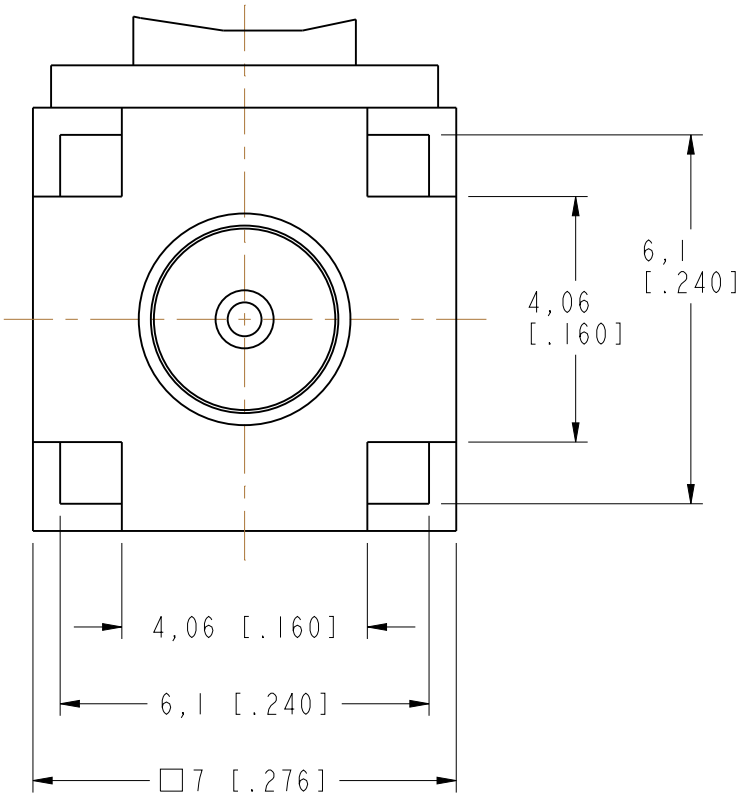
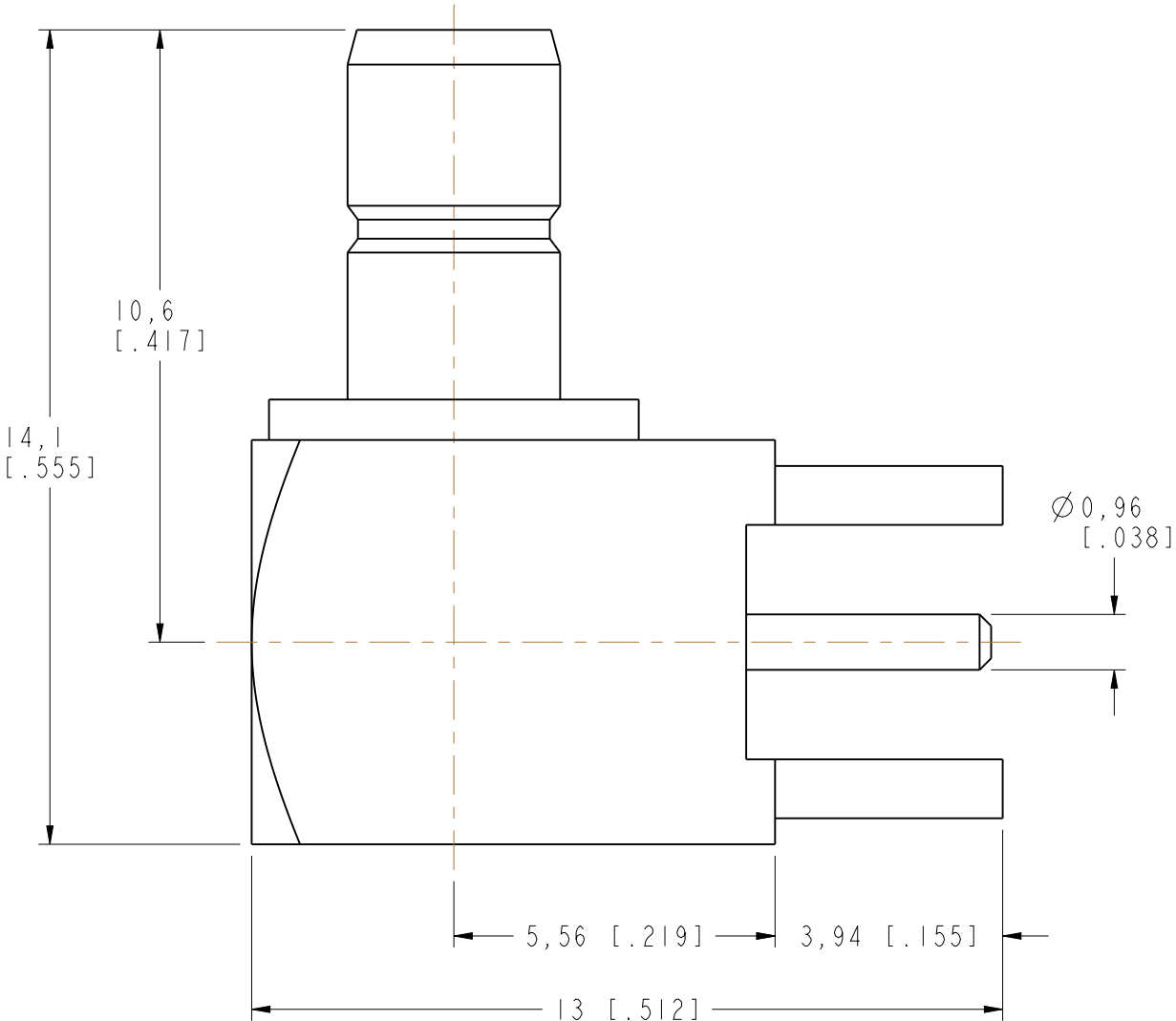
A. DURABILITY: 500 CYCLES MIN.
B. TEMPERATURE RANGE: -65°C TO +165°C



SCALE 3.000



PCB MOUNTING HOLES



CUSTOMER OUTLINE DRAWING
ALL OTHER SHEETS ARE FOR INTERNAL USE ONLY

UNLESS OTHERWISE SPECIFIED, DIMENSIONS ARE IN METRIC AND TOLERANCES ARE: <0.5mm ± 0.05mm 0.5 - 6mm ± 0.1mm 6 - 30mm ± 0.2mm 30 - 120mm ± 0.3mm ANGLES ±1°	MATERIAL -	DRAWN M.ZHANG	DATE 07-Apr-15	TITLE SMB R/A P.C. MOUNT JACK		Amphenol Connex	
		ENGINEER N.CAO	DATE 07-Apr-15				
	REFERENCE SMB1252B1-3GT30G-50	APPROVED B.C. GLEISSNER	DATE 14-Apr-15	SCALE: 8.0:1.0	SHEET 3 OF 3	DRAWING NO.	
	CONFIGURATION LEVEL: In Work	CAD FILE		DWG SIZE B	REV C	ITEM NO.	
FINISH						PART NO. 142146	

NOTICE - These drawings, specifications, or other data (1) are, and remain the property of Amphenol corp. (2) must be returned upon request; and (3) are confidential and not to be disclosed to any person other than those to whom they are given by Amphenol Corp. the furnishing of these drawings, specifications, or other data by Amphenol Corp., or to any other person to anyone for any purpose is not to be regarded by implication or otherwise in any manner licensing, granting rights to permitting such holder or any other person to manufacture, use or sell any product, process or design, patented or otherwise, that may in any way be related to or disclosed by said drawings, specifications, or other data.