



Chipsmall Limited consists of a professional team with an average of over 10 year of expertise in the distribution of electronic components. Based in Hongkong, we have already established firm and mutual-benefit business relationships with customers from,Europe,America and south Asia,supplying obsolete and hard-to-find components to meet their specific needs.

With the principle of “Quality Parts,Customers Priority,Honest Operation,and Considerate Service”,our business mainly focus on the distribution of electronic components. Line cards we deal with include Microchip,ALPS,ROHM,Xilinx,Pulse,ON,Everlight and Freescale. Main products comprise IC,Modules,Potentiometer,IC Socket,Relay,Connector.Our parts cover such applications as commercial,industrial, and automotives areas.

We are looking forward to setting up business relationship with you and hope to provide you with the best service and solution. Let us make a better world for our industry!



Contact us

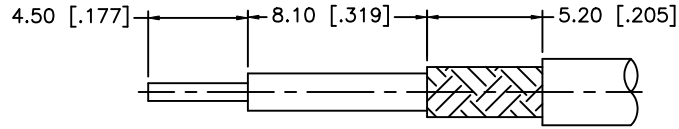
Tel: +86-755-8981 8866 Fax: +86-755-8427 6832

Email & Skype: info@chipsmall.com Web: www.chipsmall.com

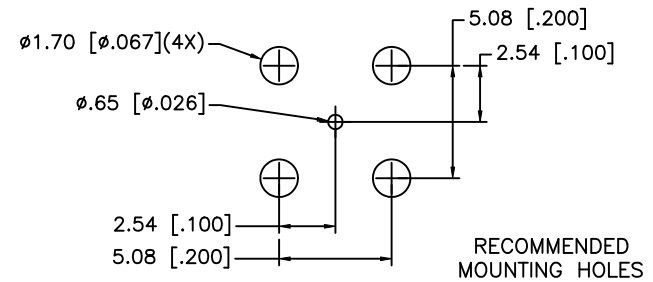
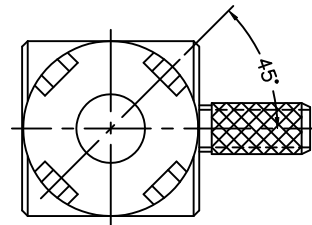
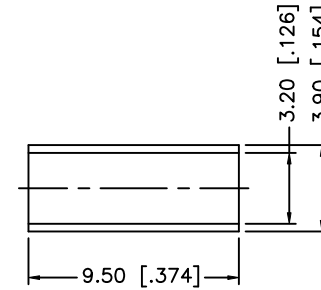
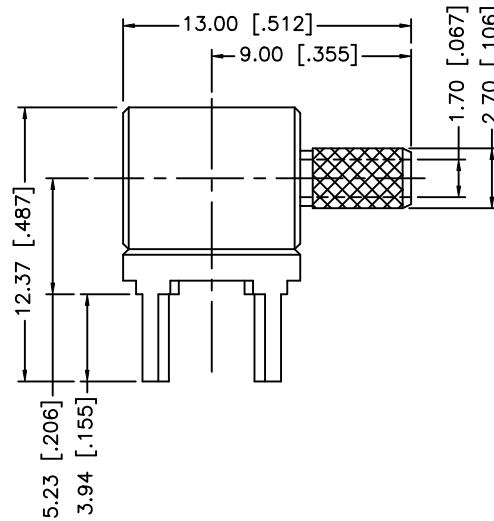
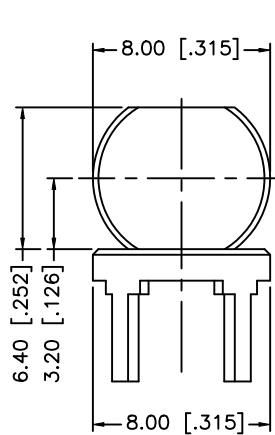
Address: A1208, Overseas Decoration Building, #122 Zhenhua RD., Futian, Shenzhen, China



REV.	DATE	DESCRIPTION
NC	12/05/99	INITIAL RELEASE
A	11/13/05	MODIFY FERRULE LENGTH, STRIPPING DIMENSIONS, DRAWING FORMAT
B	09/03/07	REVISE BARREL, FERRULE DIMENSIONS
C	04/02/08	ADD CRIMP NOTE



RECOMMENDED
CABLE STRIPPING DIM'S



RECOMMENDED
MOUNTING HOLES

NOTE:
1. CRIMPED FERRULE HEX CRIMP SIZE .128"

DESCRIPTION	MATERIAL	FINISH	QTY
8			
7			
6			
5			
4			
3	FERRULE	COPPER	GOLD 1
2	BARREL	BRASS	GOLD 1
1	BODY	BRASS	GOLD 1

UNLESS OTHERWISE SPECIFIED DIMENSIONS ARE IN MILLIMETERS. DIMENSIONS IN [] ARE IN INCHES AND FOR CUSTOMER REFERENCE ONLY.

UNLESS OTHERWISE SPECIFIED TOLERANCES FOR MILLIMETERS ARE:
0.5 - 8mm ± 0.20mm
8 - 30mm ± 0.40mm
30 - 120mm ± 0.50mm

UNLESS OTHERWISE SPECIFIED TOLERANCES FOR INCHES ARE:
.020 - .315 = ± 0.007"
.315 - 1.180 = ± 0.015"
1.180 - 4.724 = ± 0.020"

DO NOT SCALE DRAWING

APPROVALS	DATE
DRAWN G.R.S.	04/02/08
CHECKED	
ISSUED	
SHEET 1 OF 1	
CAD FILE	C:/142/142268.DWG

PART DESCRIPTION			
Amphenol Connex			
R/A PCB CABLE TERMINATION (RG-174/U, 188B/U, 179/U, 187A/U, 316/U)			
PART NO. 142268			
DWG. NO.	142268.DWG	REV. C	SIZE A
		SCALE	NA