



Chipsmall Limited consists of a professional team with an average of over 10 year of expertise in the distribution of electronic components. Based in Hongkong, we have already established firm and mutual-benefit business relationships with customers from,Europe,America and south Asia,supplying obsolete and hard-to-find components to meet their specific needs.

With the principle of “Quality Parts,Customers Priority,Honest Operation,and Considerate Service”,our business mainly focus on the distribution of electronic components. Line cards we deal with include Microchip,ALPS,ROHM,Xilinx,Pulse,ON,Everlight and Freescale. Main products comprise IC,Modules,Potentiometer,IC Socket,Relay,Connector.Our parts cover such applications as commercial,industrial, and automotives areas.

We are looking forward to setting up business relationship with you and hope to provide you with the best service and solution. Let us make a better world for our industry!



Contact us

Tel: +86-755-8981 8866 Fax: +86-755-8427 6832

Email & Skype: info@chipsmall.com Web: www.chipsmall.com

Address: A1208, Overseas Decoration Building, #122 Zhenhua RD., Futian, Shenzhen, China



Housing - HC-HPR-D07-SHFH-1SSM20-EMR-BK - 1424641

Please be informed that the data shown in this PDF Document is generated from our Online Catalog. Please find the complete data in the user's documentation. Our General Terms of Use for Downloads are valid (<http://phoenixcontact.com/download>)




Box mounting bases D7, material: Zinc die-cast, cable outlets: 1, lateral, height: 41.5 mm, cable gland: none, support sleeve: no, 1x M20, protective cover: no, Railway applications, for increased environmental and EMC requirements, HPR series, enclosed floor

Why buy this product

✓ Vibration and shock: IEC 61373/EN 50155, category 1, class 1B

RoHS

Key Commercial Data

Packing unit	1 STK
GTIN	 4 055626 375694
GTIN	4055626375694

Technical data

Dimensions

Height	41.5 mm
Width	51 mm
Length	52 mm

Ambient conditions

Degree of protection of housing (IP)	IP66 (with sealing screw)
	IP68 (0.4 bar / 30 min. with sealing screw)
	IP69K (ISO 20653:2013-02)
Ambient temperature (operation)	-40 °C ... 125 °C

General

Note	for contact inserts HC-D7, D8, A3, A4, HS2-D7, Q5, Q7
Size	D7
Housing type	Box mounting bases
Color	black
No. of cable outlets	1

Housing - HC-HPR-D07-SHFH-1SSM20-EMR-BK - 1424641

Technical data

General

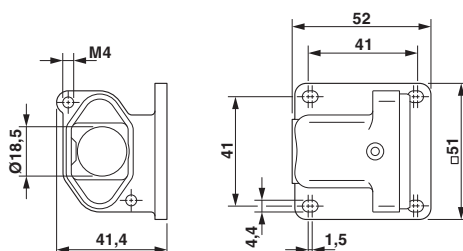
Cable outlet	lateral
Screw connection	none
Type of the screw connection	1x M20
Protective cover	no
Material	Zinc die-cast
Housing material	Zinc die-cast
Housing surface material	Powder-coated, black
Assembly instructions	M4 locking screw, slotted hexagon head screw (wrench size 7), tightening torque: 1 Nm. The seal of the pin contact insert should be removed. Max. thread length of the screw connection: 6 mm
Connection	Mount contact insert with sealing screw in the housing

Environmental Product Compliance

China RoHS	Environmentally friendly use period: unlimited = EFUP-e
	No hazardous substances above threshold values

Drawings

Dimensional drawing



Dimensional drawing

Approvals

Approvals

Approvals


EAC

Ex Approvals

Approval details

Housing - HC-HPR-D07-SHFH-1SSM20-EMR-BK - 1424641

Approvals

EAC		EAC-Zulassung
-----	---	---------------

Phoenix Contact 2018 © - all rights reserved
<http://www.phoenixcontact.com>

PHOENIX CONTACT GmbH & Co. KG
Flachsmarktstr. 8
32825 Blomberg
Germany
Tel. +49 5235 300
Fax +49 5235 3 41200
<http://www.phoenixcontact.com>