



Chipsmall Limited consists of a professional team with an average of over 10 year of expertise in the distribution of electronic components. Based in Hongkong, we have already established firm and mutual-benefit business relationships with customers from,Europe,America and south Asia,supplying obsolete and hard-to-find components to meet their specific needs.

With the principle of “Quality Parts,Customers Priority,Honest Operation,and Considerate Service”,our business mainly focus on the distribution of electronic components. Line cards we deal with include Microchip,ALPS,ROHM,Xilinx,Pulse,ON,Everlight and Freescale. Main products comprise IC,Modules,Potentiometer,IC Socket,Relay,Connector.Our parts cover such applications as commercial,industrial, and automotives areas.

We are looking forward to setting up business relationship with you and hope to provide you with the best service and solution. Let us make a better world for our industry!



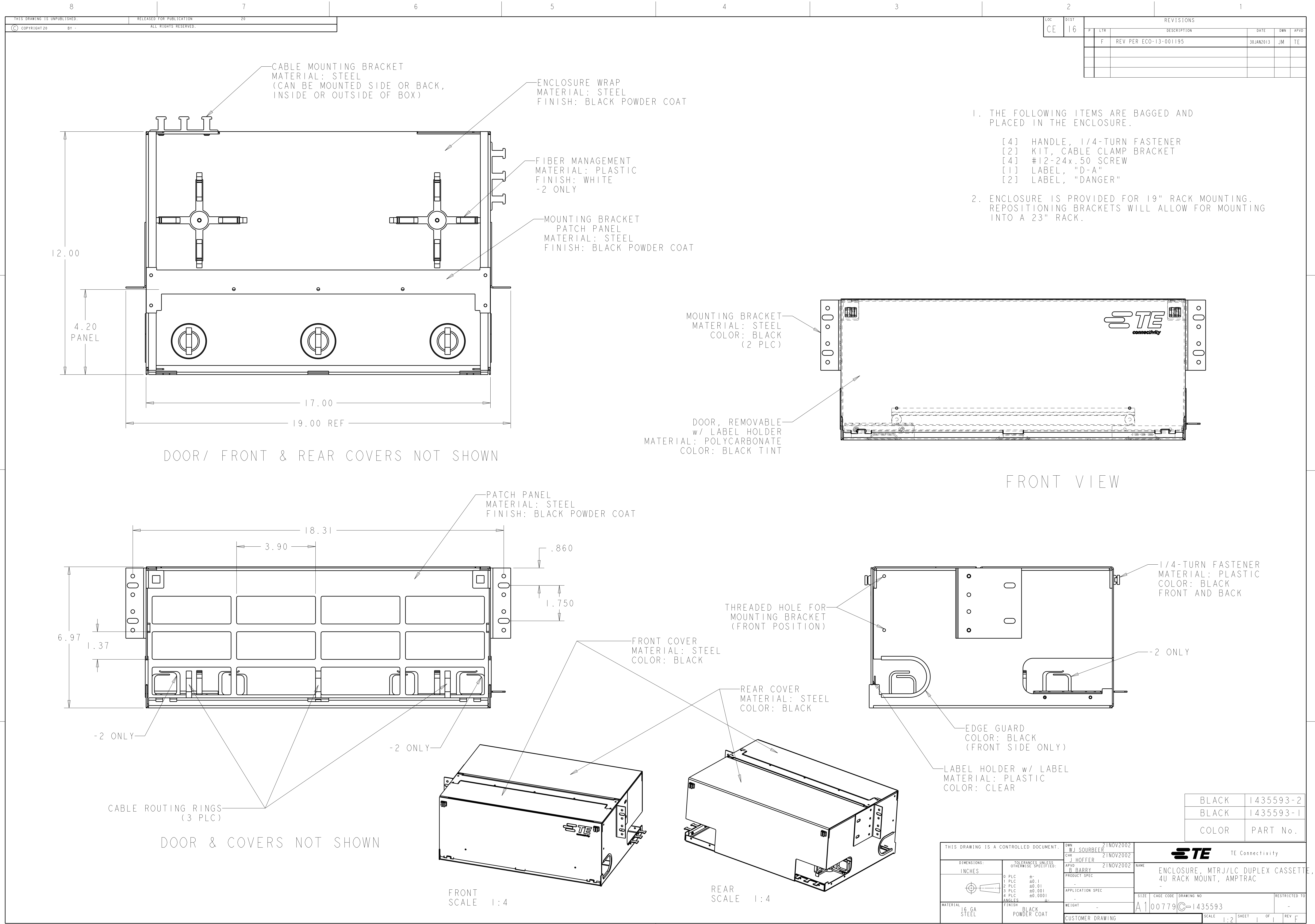
Contact us

Tel: +86-755-8981 8866 Fax: +86-755-8427 6832



Email & Skype: info@chipsmall.com Web: www.chipsmall.com

Address: A1208, Overseas Decoration Building, #122 Zhenhua RD., Futian, Shenzhen, China





LOC		DIST		REVISEMENTS				
CE	16	P	LTR	DESCRIPTION	DATE	DWN	APVD	
		F		REV PER ECO-13-001195	30JAN2013	JM	TE	

THIS DRAWING IS A CONTROLLED DOCUMENT.		DWN	W.J. SOURBEER	21NOV2002	 TE Connectivity		
DIMENSIONS:		CHK	J. HOFFER	21NOV2002			
INCHES		APVD	B. BARRY	21NOV2002	NAME		
		TOLERANCES UNLESS OTHERWISE SPECIFIED:			ENCLOSURE, MTRJ/LC DUPLEX CASSETTE, 4U RACK MOUNT, AMPTRAC		
		0 PLC ±.01					
		1 PLC ±0.01					
		2 PLC ±0.001					
MATERIAL		FINISH			SIZE		
16 GA STEEL		BLACK POWDER COAT			A100779C=1435593		
					RESTRICTED TO		
					SCALE 1:2 SHEET 1 OF 1 REV F		