



Chipsmall Limited consists of a professional team with an average of over 10 year of expertise in the distribution of electronic components. Based in Hongkong, we have already established firm and mutual-benefit business relationships with customers from,Europe,America and south Asia,supplying obsolete and hard-to-find components to meet their specific needs.

With the principle of “Quality Parts,Customers Priority,Honest Operation,and Considerate Service”,our business mainly focus on the distribution of electronic components. Line cards we deal with include Microchip,ALPS,ROHM,Xilinx,Pulse,ON,Everlight and Freescale. Main products comprise IC,Modules,Potentiometer,IC Socket,Relay,Connector.Our parts cover such applications as commercial,industrial, and automotives areas.

We are looking forward to setting up business relationship with you and hope to provide you with the best service and solution. Let us make a better world for our industry!



## Contact us

Tel: +86-755-8981 8866 Fax: +86-755-8427 6832

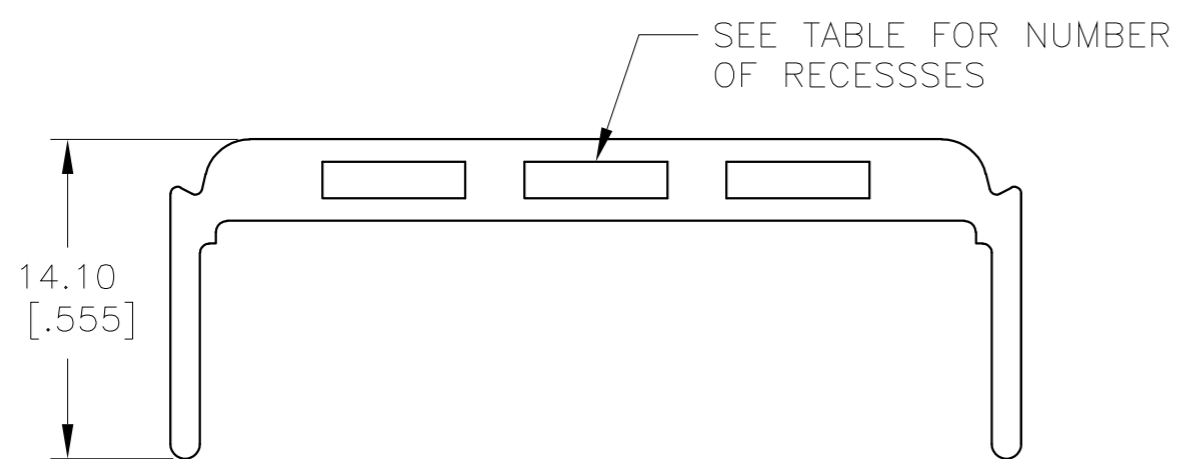
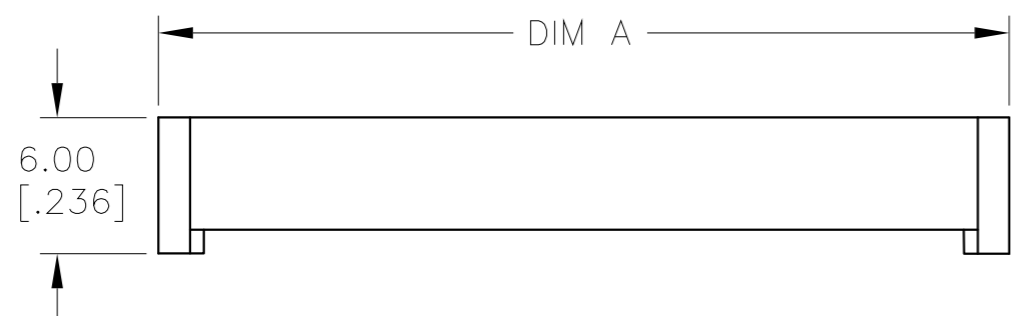
Email & Skype: info@chipsmall.com Web: www.chipsmall.com

Address: A1208, Overseas Decoration Building, #122 Zhenhua RD., Futian, Shenzhen, China



THIS DRAWING IS UNPUBLISHED. RELEASED FOR PUBLICATION  
 © COPYRIGHT 2006 BY TYCO ELECTRONICS CORPORATION. ALL RIGHTS RESERVED.

LOC	DIST	REVISIONS			
P	LTR	DESCRIPTION	DATE	DWN	APVD
GP	00	B3	REVISED PER ECO-08-004984	10MAR08	JDP/CWR



① GLASS-REINFORCED POLYESTER, COLOR: SEE TABLE.

	COLOR	NUMBER OF RECESSES	A	NUMBER OF POSITIONS	T&B PART NUMBER (REFERENCE)	TE PART NUMBER
	BLUE	7	85.78[3.377]	64	622-6431	4-1437025-0
OBSOLETE	BLUE	7	80.70[3.177]	60	622-6031	3-1437025-0
	BLUE	6	68.00[2.677]	50	622-5031	1-1437025-2
OBSOLETE	BLUE	5	60.38[2.377]	44	622-4431	9-1437024-4
	BLUE	4	55.30[2.177]	40	622-4031	8-1437024-3
OBSOLETE	BLUE	4	50.22[1.977]	36	622-3631	6-1437024-9
	BLUE	4	47.68[1.877]	34	622-3431	5-1437024-3
	BLUE	4	42.60[1.677]	30	622-3031	4-1437024-0
	BLUE	3	37.52[1.477]	26	622-2631	2-1437024-8
	BLUE	2	34.98[1.377]	24	622-2431	1-1437024-6
	BLUE	2	29.90[1.177]	20	622-2031	1437024-5
	BLUE	1	24.82[.977]	16	622-1631	8-1437023-9
	BLUE	1	22.28[.877]	14	622-1431	7-1437023-1
	BLUE	0	19.74[.777]	12	622-1231	1-1437022-8
	BLUE	0	17.20[.677]	10	622-1031	4-1437023-7
	BLUE	0	12.12[.477]	6	622-0631	2-1437023-9
OBSOLETE	BLUE	0	9.58[.377]	4	622-0431	2-1437023-0
	BLACK	7	85.78[3.377]	64	636-6431	1437029-2
	BLACK	7	80.70[3.177]	60	636-6031	9-1437028-5
	BLACK	6	68.00[2.677]	50	636-5031	6-1437028-8
OBSOLETE	BLACK	5	60.38[2.377]	44	636-4431	4-1437028-9
	BLACK	4	55.30[2.177]	40	636-4031	3-1437028-4
	BLACK	4	47.68[1.877]	34	636-3431	8-1437027-0
	BLACK	4	42.60[1.677]	30	636-3031	6-1437011-6
	BLACK	3	37.52[1.477]	26	636-2631	3-1437027-4
	BLACK	2	34.98[1.377]	24	636-2431	5-1437011-3
	BLACK	2	29.90[1.177]	20	636-2031	1437027-7
	BLACK	1	24.82[.977]	16	636-1631	8-1437026-5
	BLACK	1	22.28[.877]	14	636-1431	6-1437026-6
OBSOLETE	BLACK	0	19.74[.777]	12	636-1231	3-1447109-4
	BLACK	0	17.20[.677]	10	636-1031	3-1437026-9
	BLACK	0	12.12[.477]	6	636-0631	1-1437026-9

THIS DRAWING IS A CONTROLLED DOCUMENT.		DWN 22MAR06 J.GERACE	Tyco Electronics Corporation Harrisburg, PA 17105-3608	
DIMENSIONS: INCHES		CHK 22MAR06 C.ROHDE	NAME	
TOLERANCES UNLESS OTHERWISE SPECIFIED:		APVD 22MAR06 M.WALMSLEY	STRAIN RELIEF, FEMALE SOCKET CONNECTOR	
0 PLC ± -		PRODUCT SPEC	SIZE	CAGE CODE
1 PLC ± -		APPLICATION SPEC	A2	00779
2 PLC ± -		WEIGHT	DRAWING NO	RESTRICTED TO
3 PLC ± 0.13[.005]		-	C=1-1437026-9	-
4 PLC ± -		FINISH	SCALE	SHEET
ANGLES ± -		-	3:1	1 of 1
MATERIAL		CUSTOMER DRAWING	REV	B3
①				