



Chipsmall Limited consists of a professional team with an average of over 10 year of expertise in the distribution of electronic components. Based in Hongkong, we have already established firm and mutual-benefit business relationships with customers from,Europe,America and south Asia,supplying obsolete and hard-to-find components to meet their specific needs.

With the principle of “Quality Parts,Customers Priority,Honest Operation,and Considerate Service”,our business mainly focus on the distribution of electronic components. Line cards we deal with include Microchip,ALPS,ROHM,Xilinx,Pulse,ON,Everlight and Freescale. Main products comprise IC,Modules,Potentiometer,IC Socket,Relay,Connector.Our parts cover such applications as commercial,industrial, and automotives areas.

We are looking forward to setting up business relationship with you and hope to provide you with the best service and solution. Let us make a better world for our industry!



Contact us

Tel: +86-755-8981 8866 Fax: +86-755-8427 6832

Email & Skype: info@chipsmall.com Web: www.chipsmall.com

Address: A1208, Overseas Decoration Building, #122 Zhenhua RD., Futian, Shenzhen, China



THIS DRAWING IS UNPUBLISHED. RELEASED FOR PUBLICATION
 © COPYRIGHT - BY TYCO ELECTRONICS CORPORATION. ALL RIGHTS RESERVED.

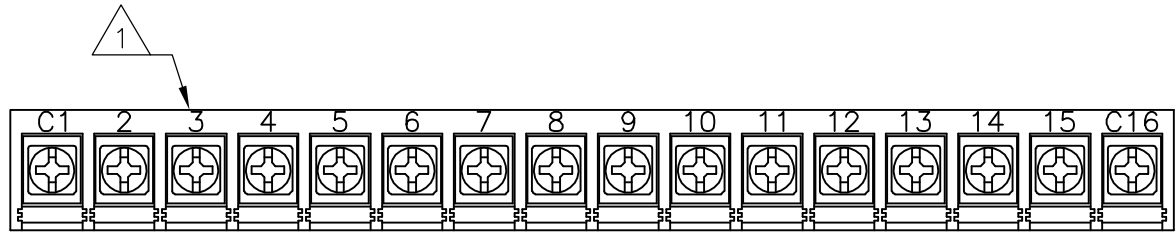
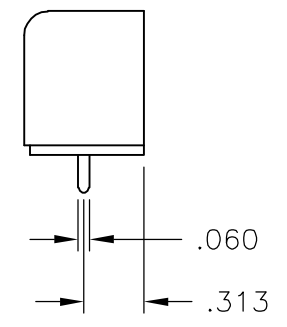
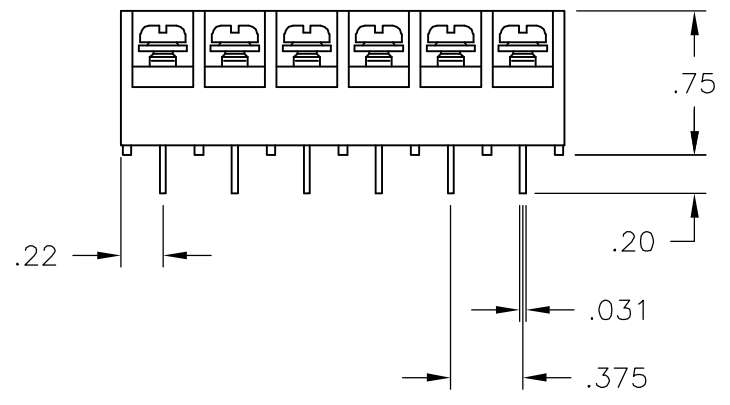
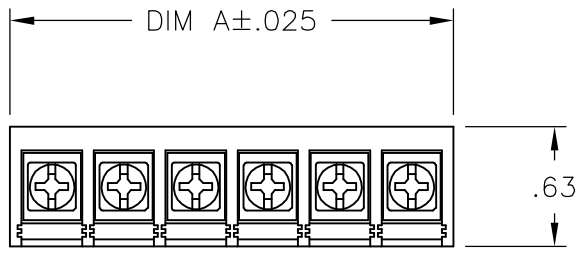
LOC	DIST	REVISIONS					
FT	0	P	LTR	DESCRIPTION	DATE	DWN	APVD
			C	REVISED PER ECO-07-005875	3/23/07	SS	SRY

NOTES:
MATERIAL:
 HOUSING: THERMOPLASTIC, UL94V-0, BLACK.
 TERMINALS: BRIGHT TIN PLATED COPPER ALLOY.
 SCREW: 6-32, STEEL, ZINC PLATING W/ CLEAR CHROMATE COATING.

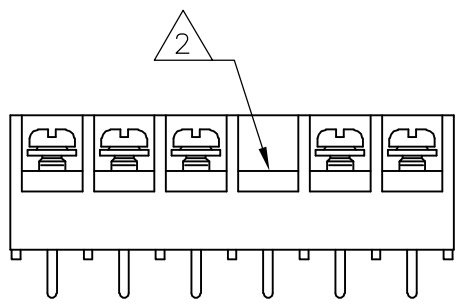
ELECTRICAL:
 MAX CURRENT: 20A.
 OPERATING VOLTAGE: 300V.
 WIRE RANGE: 12-22 AWG

ENVIRONMENTAL PROPERTIES:
 OPERATING TEMP: 105°C

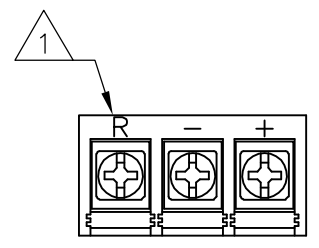
- ① CIRCUIT ID MARKED IN WHITE INK.
- ② NO SCREW IN POSITION 4.
- ③ PRELIMINARY PART NUMBER.



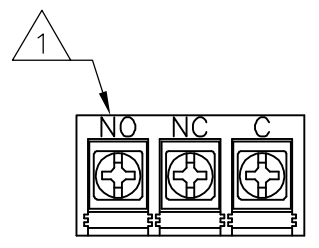
796595-4



796595-1



796595-2



796595-3

SEE FIGURE ③

SEE FIGURE

SEE FIGURE ①
 SEE FIGURE ①

7.561	20	BC6-P108-20	7-1437662-9
7.186	19	BC6-P108-19	6-1437662-7
6.811	18	BC6-P108-18	7-1437662-8
6.436	17	BC6-P108-17	7-1437662-7
6.061	16	BC6-P108-16-291	796595-4
6.061	16	BC6-P108-16	1-1437662-9
5.686	15	BC6-P108-15	7-1437662-6
5.311	14	BC6-P108-14	1-1437662-8
4.936	13	BC6-P108-13	7-1437662-5
4.561	12	BC6-P108-12	1-1437662-7
4.186	11	BC6-P108-11	1-1437662-6
3.811	10	BC6-P108-10	1-1437662-5
3.436	9	BC6-P108-09	1-1437662-3
3.061	8	BC6-P108-08	1-1437662-2
2.686	7	BC6-P108-07	1-1437662-1
2.311	6	BC6-P108-06-284	796595-1
2.311	6	BC6-P108-06	1-1437662-0
1.936	5	BC6-P108-05	1437662-9
1.561	4	BC6-P108-04	1437662-8
1.186	3	BC6-P108-03-290	796595-3
1.186	3	BC6-P108-03-289	796595-2
1.186	3	BC6-P108-03	1437662-5
.811	2	BC6-P108-02	1437662-4

DIM. A REF.	NO. OF POS.	CATALOG NUMBER	TYCO PART NO.
-------------	-------------	----------------	---------------

THIS DRAWING IS A CONTROLLED DOCUMENT.		DWN S SCHLEGEL 8/25/04	Tyco Electronics Corporation Harrisburg, Pa 17105-3608	
DIMENSIONS: INCHES		CHK S. YODER 8/25/04		
TOLERANCES UNLESS OTHERWISE SPECIFIED:		APVD S. YODER 8/25/04	NAME BC6-P108-XX ASSEMBLY	
0 PLC ± -		PRODUCT SPEC -	APPLICATION SPEC -	
1 PLC ± -		WEIGHT -	SIZE A3	CAGE CODE 00779
2 PLC ± .02		CUSTOMER DRAWING	DRAWING NO C-1437662-1	
3 PLC ± .010			RESTRICTED TO -	
4 PLC ± -		SCALE NTS	SHEET 1 OF 1	REV C
ANGLES ± -				
FINISH -				