



Chipsmall Limited consists of a professional team with an average of over 10 year of expertise in the distribution of electronic components. Based in Hongkong, we have already established firm and mutual-benefit business relationships with customers from,Europe,America and south Asia,supplying obsolete and hard-to-find components to meet their specific needs.

With the principle of “Quality Parts,Customers Priority,Honest Operation,and Considerate Service”,our business mainly focus on the distribution of electronic components. Line cards we deal with include Microchip,ALPS,ROHM,Xilinx,Pulse,ON,Everlight and Freescale. Main products comprise IC,Modules,Potentiometer,IC Socket,Relay,Connector.Our parts cover such applications as commercial,industrial, and automotives areas.

We are looking forward to setting up business relationship with you and hope to provide you with the best service and solution. Let us make a better world for our industry!



Contact us

Tel: +86-755-8981 8866 Fax: +86-755-8427 6832

Email & Skype: info@chipsmall.com Web: www.chipsmall.com

Address: A1208, Overseas Decoration Building, #122 Zhenhua RD., Futian, Shenzhen, China



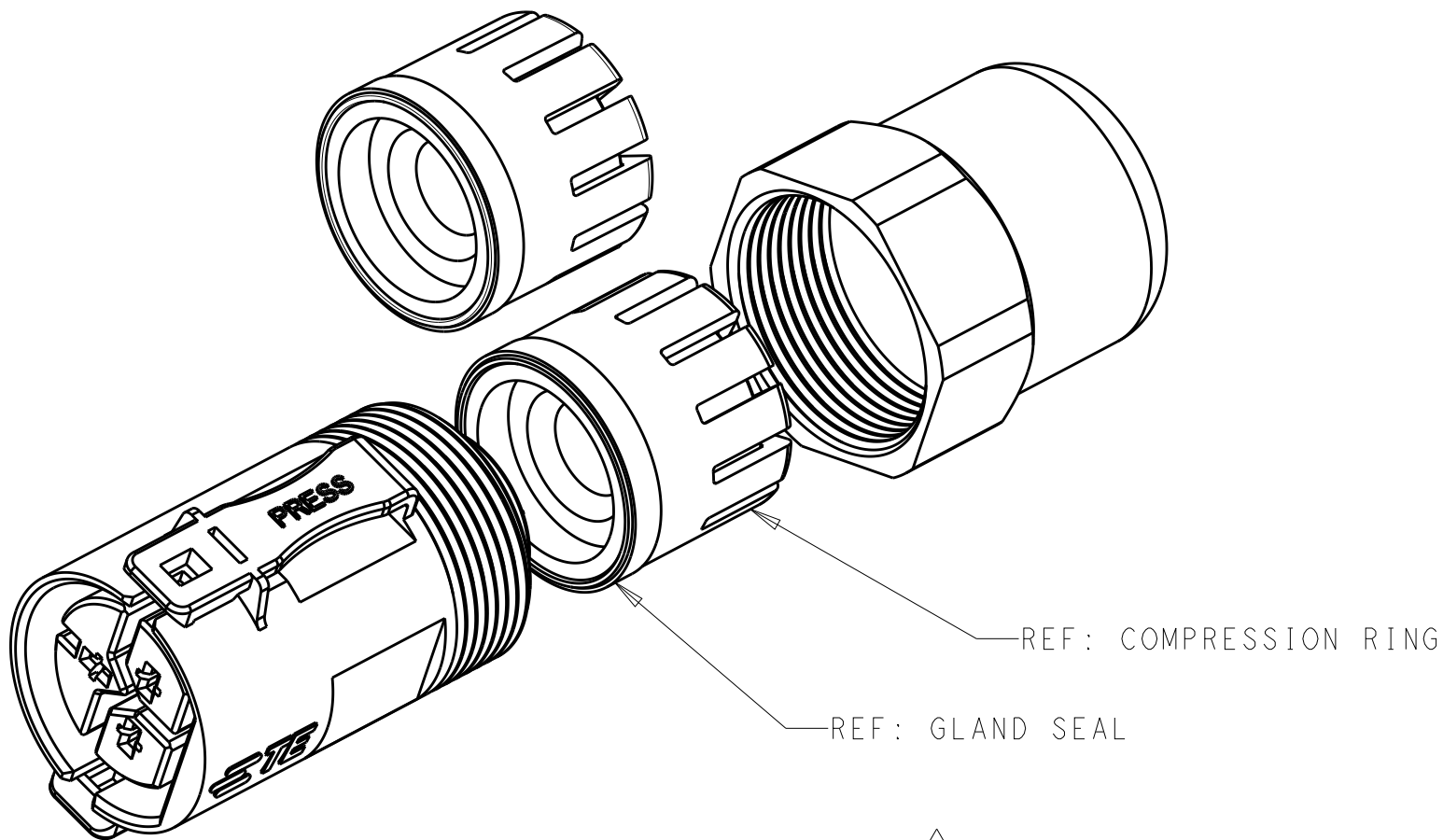
REVISIONS					
P	LTR	DESCRIPTION	DATE	DWN	APVD
	4	MODIFIED NOTE 5	02JUN2015	MM	MM
	5	ADD APP SPEC NUM, ADJUST NOTE 5	17JUL2015	MM	MM
	6	REMOVE PRELIM NOTE	10JUN2016	MM	MM

D

C

B

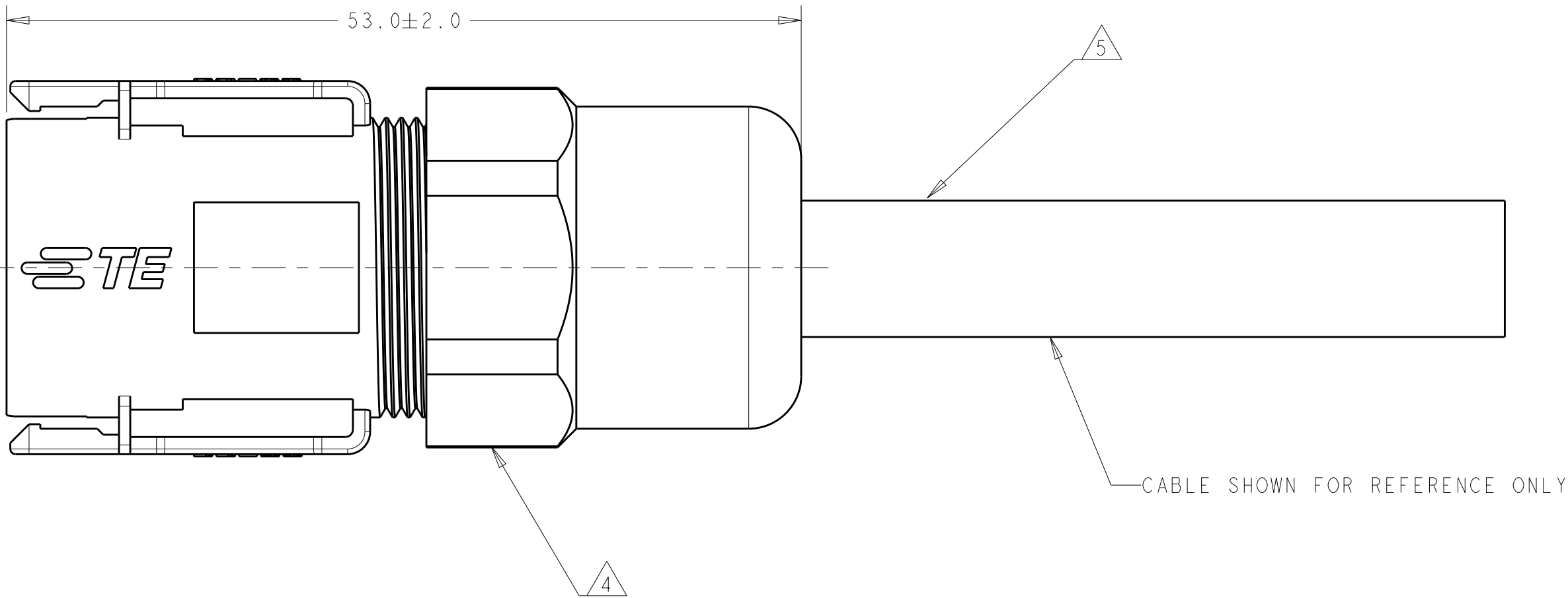
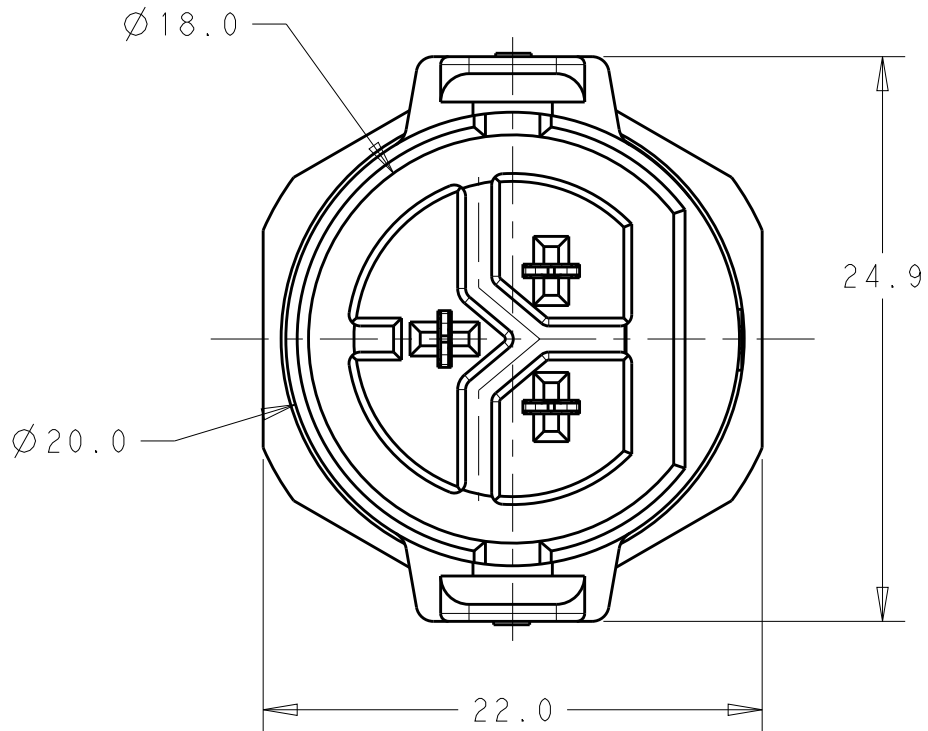
A




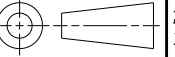
SHOWN IN AS PACKAGED STATE 4
SCALE 2:1

NOTES:

- 1 MATERIALS AND FINISH:
-MAIN HOUSING: PC, COLOR: BLACK
-FRONT HOUSING: PC, COLOR: BLACK
-RING NUT: PC, COLOR: BLACK
-RELEASE PLATE: PC, COLOR: BLUE
-COMPRESSION RING: PC, COLOR: BLUE/BLACK
-SEALS: TPE, COLOR: NATURAL/BLACK
-CONTACTS: COPPER ALLOY, FINISH: Sn OVER Ni
2. MUST COMPLY WITH DIRECTIVE 2002/95/EC (ROHS)
3. THIS PRODUCT HAS NOT COMPLETED VALIDATION TESTING
- 4 PRODUCT SHOWN ASSEMBLED FOR DOCUMENTATION PURPOSES.
PRODUCT IS SUPPLIED AS AN UNASSEMBLED KIT;
PACKAGED IN A SINGLE BAG.
- 5 TERMINATE TO 3 CONDUCTOR JACKETED CABLE WITH
THE FOLLOWING LIMITS:
- MAXIMUM CABLE OUTSIDE DIAMETER OF 10.2mm.
- MINIMUM CABLE OUTSIDE DIAMETER OF 6.0mm
- CABLE DIAMETERS 6.0-7.3 USE THE NATURAL COLOR GLAND SEAL AND BLUE COMPRESSION RING
- CABLE DIAMETERS 7.3-10.0 USE THE BLACK COLOR GLAND SEAL AND BLACK COMPRESSION RING
- MAXIMUM INNER CONDUCTOR INSULATION DIAMETER OF 3.00mm.
- 16-18AWG, 0.75-1.5mm² SOLID OR STRANDED COPPER
CONDUCTORS
6. MATING CONNECTOR PART NUMBER IS 2213419-1.



2213422-1
PART NO.

THIS DRAWING IS A CONTROLLED DOCUMENT.		DWN C. DAILY 27AUG2014		 TE Connectivity			
		CHK M. MOSTOLLER 27AUG2014					
DIMENSIONS: mm		TOLERANCES UNLESS OTHERWISE SPECIFIED: 0 PLC ± 1 PLC ±0.25 2 PLC ±0.15 3 PLC ± 4 PLC ± ANGLES ±2° FINISH		NAME KIT, CONNECTOR CIRCULAR POKE-IN -			
				APVD -		PRODUCT SPEC 108-133031	
				APPLICATION SPEC 114-32141		SIZE A2	
				WEIGHT -		CAGE CODE -	
MATERIAL - -				DRAWING NO C=2213422		RESTRICTED TO -	
		Customer Drawing		SCALE 3:1		SHEET 1 OF 1	
						REV 6	

D

C

B

A