



Chipsmall Limited consists of a professional team with an average of over 10 year of expertise in the distribution of electronic components. Based in Hongkong, we have already established firm and mutual-benefit business relationships with customers from,Europe,America and south Asia,supplying obsolete and hard-to-find components to meet their specific needs.

With the principle of “Quality Parts,Customers Priority,Honest Operation,and Considerate Service”,our business mainly focus on the distribution of electronic components. Line cards we deal with include Microchip,ALPS,ROHM,Xilinx,Pulse,ON,Everlight and Freescale. Main products comprise IC,Modules,Potentiometer,IC Socket,Relay,Connector.Our parts cover such applications as commercial,industrial, and automotives areas.

We are looking forward to setting up business relationship with you and hope to provide you with the best service and solution. Let us make a better world for our industry!



## Contact us

Tel: +86-755-8981 8866 Fax: +86-755-8427 6832

Email & Skype: info@chipsmall.com Web: www.chipsmall.com

Address: A1208, Overseas Decoration Building, #122 Zhenhua RD., Futian, Shenzhen, China



LOC	DIST	REVISIONS					
		P	LTR	DESCRIPTION	DATE	DWN	APVD
-	-	-	-	SEE SHEET 1	-	-	-

- ① CIRCUITS LOADED: ALL
- ② PRELIMINARY PART NUMBER
- ③ CIRCUITS LOADED: 1, 2, 3, 4, 5, 6, 7, 8, 9, 11, 12, 13, 14, 15, 16, 17, 18, 19.
- ④ CIRCUITS LOADED: 1, 2, 3, 4, 5, 6, 7, 8, 10, 12, 13, 14, 15, 16, 17, 18, 19.
- ⑤ CIRCUITS LOADED: 1, 2, 3, 4, 5, 6, 7, 8, 12, 13, 14, 15, 16, 17, 18, 19.
- ⑥ CIRCUITS LOADED: 1, 2, 3, 4, 7, 8, 9, 10, 11, 12, 13, 16, 17, 18, 19.
- ⑦ CIRCUITS LOADED: 1, 2, 3, 4, 7, 8, 9, 11, 12, 13, 16, 17, 18, 19.
- ⑧ CIRCUITS LOADED: 1, 2, 3, 4, 7, 8, 10, 12, 13, 16, 17, 18, 19.
- ⑨ CIRCUITS LOADED: 1, 2, 3, 4, 7, 8, 12, 13, 16, 17, 18, 19.

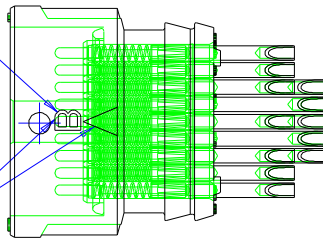
WHITE	⑨	12	BREAKAWAY	30°	② 1-1445757-6
BLACK	⑨	12	POSITIVE	0°	② 1-1445757-5
WHITE	⑧	13	BREAKAWAY	30°	② 1-1445757-4
BLACK	⑧	13	POSITIVE	0°	② 1-1445757-3
WHITE	⑦	14	BREAKAWAY	30°	② 1-1445757-2
BLACK	⑦	14	POSITIVE	0°	② 1-1445757-1
WHITE	⑥	15	BREAKAWAY	30°	② 1-1445757-0
BLACK	⑥	15	POSITIVE	0°	② 1445757-09
WHITE	⑤	16	BREAKAWAY	30°	② 1445757-08
BLACK	⑤	16	POSITIVE	0°	② 1445757-07
WHITE	④	17	BREAKAWAY	30°	② 1445757-06
BLACK	④	17	POSITIVE	0°	② 1445757-05
WHITE	③	18	BREAKAWAY	30°	② 1445757-04
BLACK	③	18	POSITIVE	0°	② 1445757-03
WHITE	①	19	BREAKAWAY	30°	② 1445757-02
BLACK	①	19	POSITIVE	0°	1445757-01

HOUSING COLOR	CIRCUITS LOADED	CONTACT QTY	LATCH	A REF	PART NUMBER
<small>TYPE SPECIFIC TO A CONTROLLED DOCUMENT FOR TYCO ELECTRONICS CORPORATION                      IF A SUBJECT IS CHANGED AND THE DOCUMENT IS REISSUED, THE IDENTIFICATION                      SHOULD BE CONTACTED FOR THE LATEST REVISION.</small>					
DIMENSIONS:		TOLERANCES UNLESS OTHERWISE SPECIFIED:		DWN: 17AUG2001 SHANE WILES CWR: 17AUG2001 G. DOUZY APVD: - NAME: Tyco Electronics Harrisburg, PA 17105-3608 PRODUCT SPEC: ASSMELY, RECEPTACLE, SPRING PROBE APPLICATION SPEC: SOLDER CUP, 19 POSITION, MICRO CPC SIZE: A2 CAGE CODE: 00779 DRAWING NO: 1445757 RESTRICTED TO: -	
mm	0 PLC ±.1 1 PLC ±.1 2 PLC ±.13 3 PLC ±.1 4 PLC ±.1	ANGLES ±.1	MATERIAL	FINISH	WEIGHT
CUSTOMER DRAWING			SCALE: 5:1	SHEET: 2 OF 2	REV: 10

LOC	DIST	REVISIONS				
P	LTR	DESCRIPTION	DATE	DWN	APVD	
7		REVISED	13MAY03	BH	KD	
8		ADDED 'B'. A REF. 30° WAS 10°	5-28-03	GD	KD	
9		REVISED	3-15-04	GD	KD	
10		ADDED P/N: -03 THRU 1--6, NOTES, SHEET 2.	4-08-04			

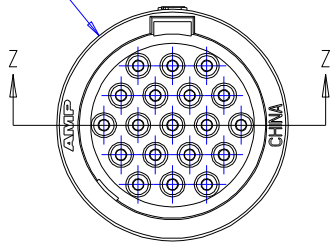
LATCH IDENTIFIER  
 B-BREAKAWAY LATCH  
 BREAKAWAY VERSION ONLY,  
 MAY BE ORIENTED  
 IN ANY DIRECTION

ALIGNMENT  
 INDICATORS



THIS PRODUCT HAS NOT COMPLETED  
 VALIDATION TESTING

Ø 13.5 ± 0.1

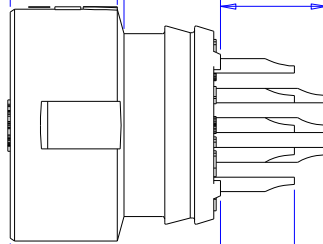


6.63  
 REF

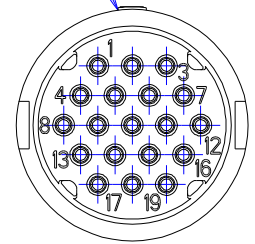
6.25 ± 0.25

MATERIAL: THERMOPLASTIC, COLOR-SEE TABLE

HOUSING, QTY-1



6.2 ± 0.1 TYP



12.25 ± 0.36

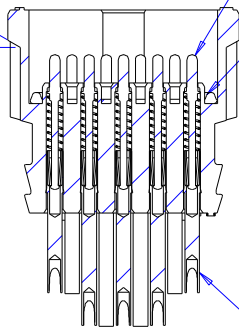
4.3 ± 0.1  
 TYP

CONTACT, PISTON, QTY-19  
 MATERIAL: BRASS  
 FINISH: GOLD OVER NICKEL

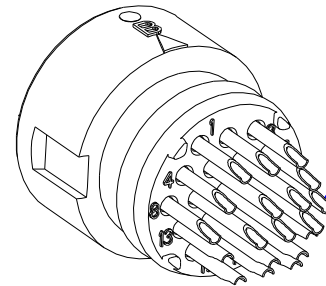
SEAL, INTERFACIAL, QTY-1  
 MATERIAL: SILICONE, COLOR-RED

SOLDER TERMINATION AREA OF ALL  
 CONTACTS IN CIRCUITS #8 THRU #12  
 MAY BE ORIENTED UP OR DOWN.

DIM A



CONTACT, SOLDER CUP, QTY-19  
 MATERIAL: BRASS  
 FINISH: TIN-LEAD OVER NICKEL  
 SEE VIEW W FOR CONTACT ORIENTATION



VIEW W

SECTION Z-Z

<small>THIS DRAWING IS A CONTROLLED DOCUMENT FOR TYCO ELECTRONICS CORPORATION                  IT IS SUBJECT TO CHANGE AND THE USER SHALL BE RESPONSIBLE FOR OBTAINING THE LATEST REVISION.                  DIMENSIONS SHALL BE IN MILLIMETERS UNLESS OTHERWISE SPECIFIED.</small>		DWN: 17AUG2001 SHANE WIESE CDR: 17AUG2001 G. DOUTY APVD:	Tyco Electronics Harrisburg, PA 17105-3608
DIMENSIONS: mm 0 PLC ±. 1 PLC ±. 2 PLC ±0.13 3 PLC ±. 4 PLC ±. ANGLES ±. FINISH	TOLERANCES UNLESS OTHERWISE SPECIFIED: ±. ±0.13 ±. ±. ±.	NAME: ASSMELY, RECEPTACLE, SPRING PROBE SOLDER CUP, 19 POSITION, MICRO CPC	SIZE: CAGE CODE: DRAWING NO: A2 00779 C-1445757
MATERIAL: SEE CALLOUT	TOLERANCES UNLESS OTHERWISE SPECIFIED: SEE CALLOUT	PRODUCT SPEC: CUSTOMER DRAWING	RESTRICTED TO: 10
		WEIGHT: -	SCALE: 5:1 SHEET 1 OF 2 REV 10