



Chipsmall Limited consists of a professional team with an average of over 10 year of expertise in the distribution of electronic components. Based in Hongkong, we have already established firm and mutual-benefit business relationships with customers from,Europe,America and south Asia,supplying obsolete and hard-to-find components to meet their specific needs.

With the principle of “Quality Parts,Customers Priority,Honest Operation,and Considerate Service”,our business mainly focus on the distribution of electronic components. Line cards we deal with include Microchip,ALPS,ROHM,Xilinx,Pulse,ON,Everlight and Freescale. Main products comprise IC,Modules,Potentiometer,IC Socket,Relay,Connector.Our parts cover such applications as commercial,industrial, and automotives areas.

We are looking forward to setting up business relationship with you and hope to provide you with the best service and solution. Let us make a better world for our industry!



## Contact us

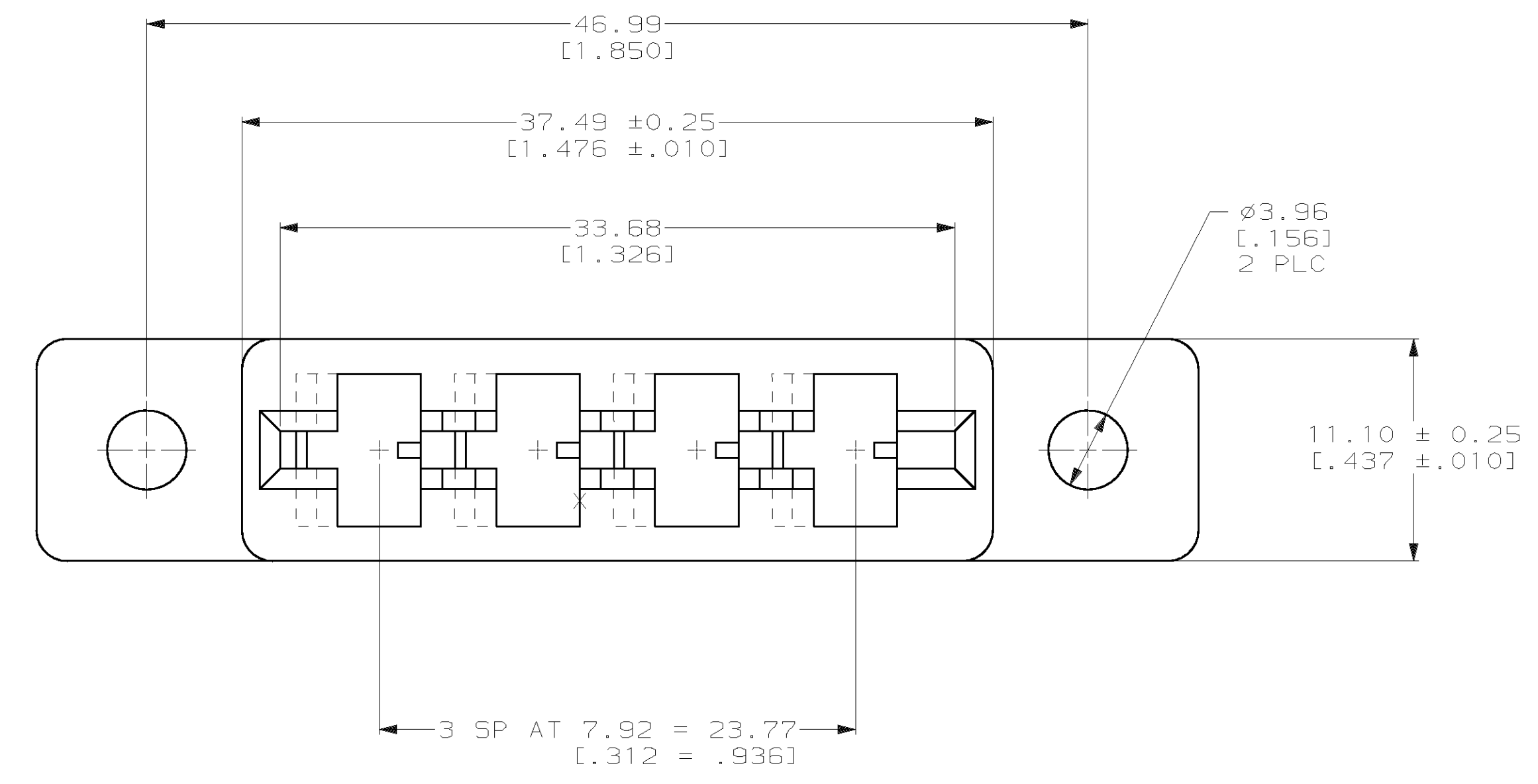
Tel: +86-755-8981 8866 Fax: +86-755-8427 6832

Email & Skype: info@chipsmall.com Web: www.chipsmall.com

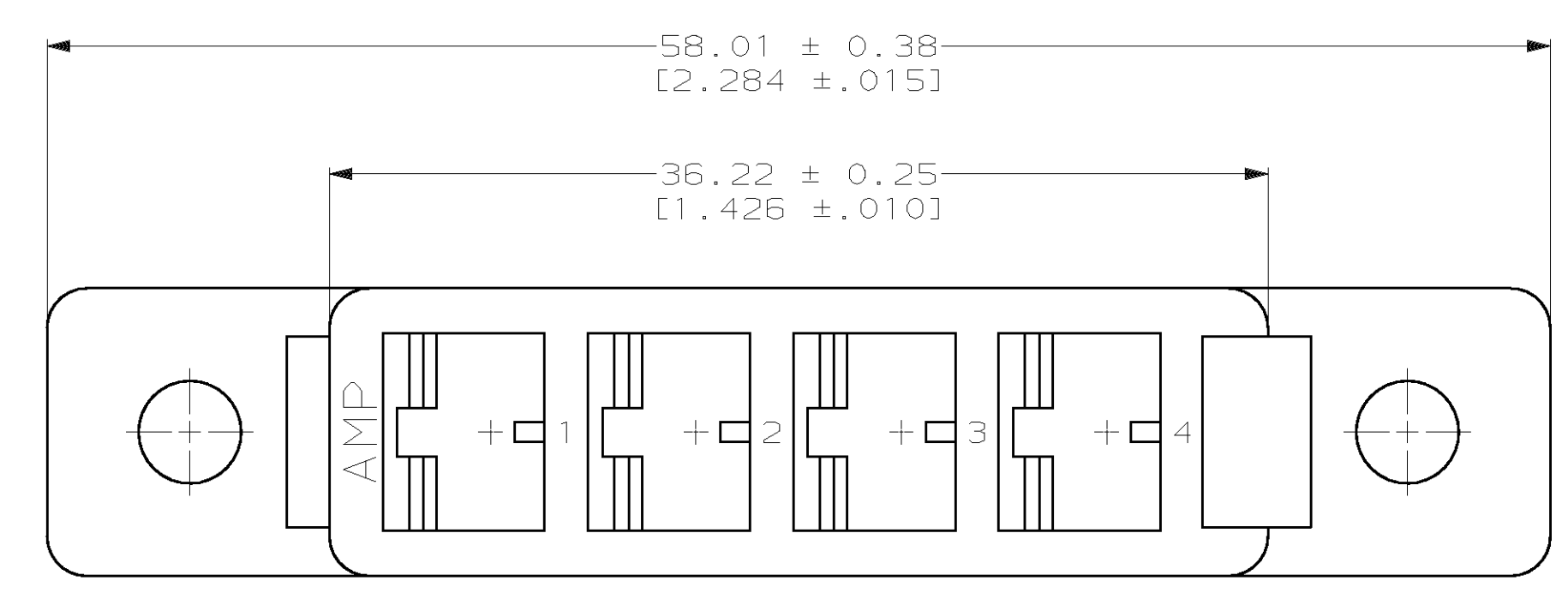
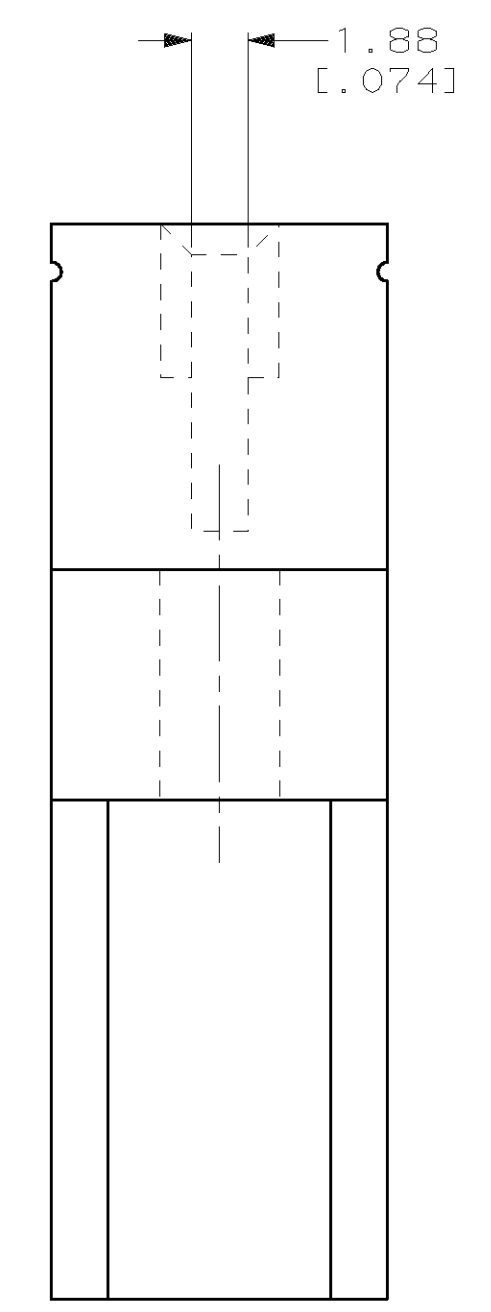
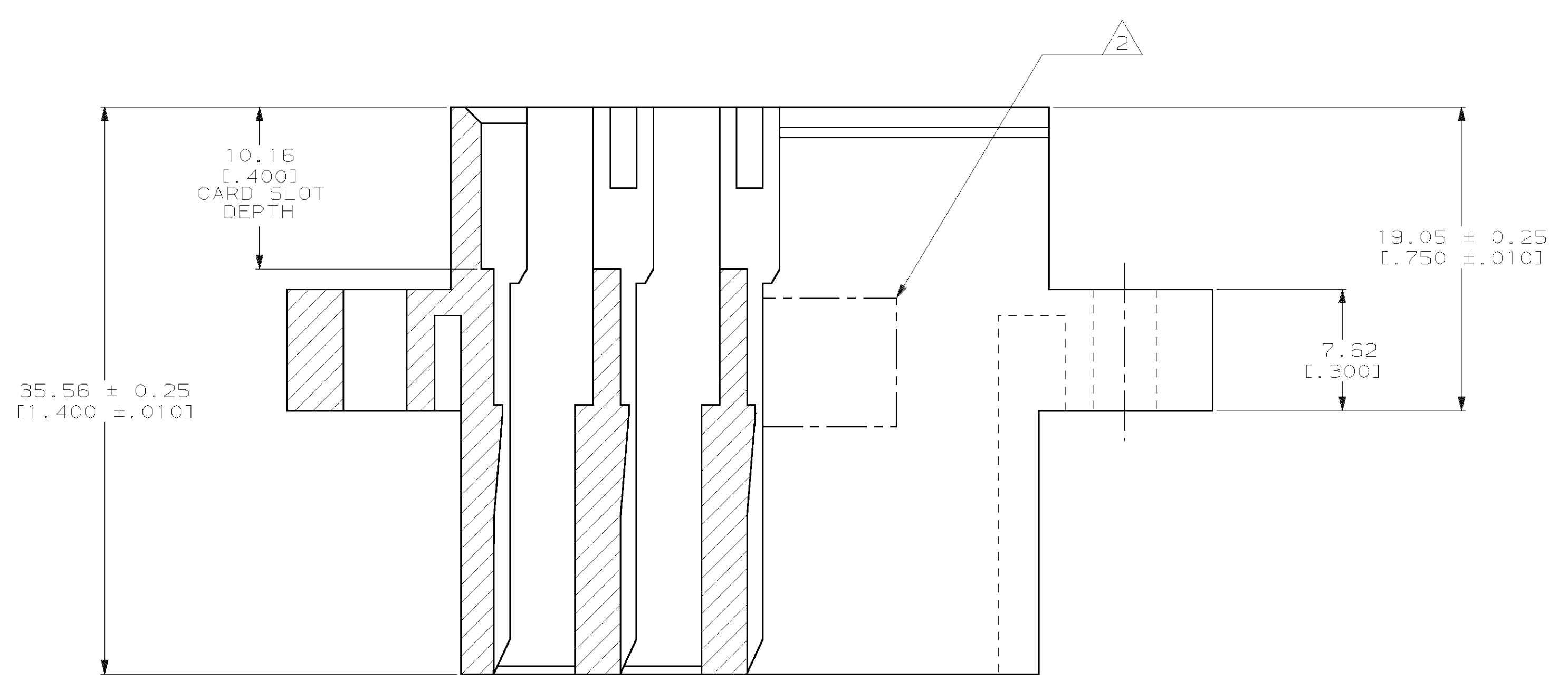
Address: A1208, Overseas Decoration Building, #122 Zhenhua RD., Futian, Shenzhen, China



LOC		DIST		P		F		ZONE		LTR		REVISIONS		DATE	APPD
FT	22											0	RELEASED PER 95-0158-003-1	3/11/96	HR
												A	REV PER 0320-264-97	05 AUG 97	NS
												B	REV PER 0652-0070-99	04 JUN 99	MM



- 1 MATERIAL: VALOX 420 SE0; COLOR: NATURAL.
- 2 "AMP" PART NO AND DATE CODE IN THIS AREA.



THIS DRAWING IS A CONTROLLED DOCUMENT FOR AMP INCORPORATED. IT IS SUBJECT TO CHANGE AND THE CONTROLLING ENGINEERING ORGANIZATION SHOULD BE CONTACTED FOR THE LATEST REVISION.

DO NOT SCALE PRINT. UNLESS SPECIFIED DIMENSIONS IN mm [INCHES]		DR 3/11/96 P. BENNINGHOVE		4 POSITION		145233-1	
TOLERANCES - ON :		CHK 3/11/96 H ROSE		PART NO		AMP Incorporated Harrisburg, PA 17105-3608	
2 PLC DEC ± .		APPD 3/11/96 H ROSE		NAME		HOUSING, HIGH CURRENT, .062THK. BD.	
3 PLC DEC ± .005		APPD 3/11/96 M THUMMA		MATERIAL		SEE CALLOUT	
ANGLES ± -		PRODUCT SPEC		FINISH		-	
-		APPLICATION SPEC		SIZE		D 00779	
-		-		CAGE CODE		C=145233	
-		-		DRAWING NO		-	
-		-		WEIGHT		-	
-		-		SCALE		4:1	
-		-		SHEET		1 OF 1	