



Chipsmall Limited consists of a professional team with an average of over 10 year of expertise in the distribution of electronic components. Based in Hongkong, we have already established firm and mutual-benefit business relationships with customers from,Europe,America and south Asia,supplying obsolete and hard-to-find components to meet their specific needs.

With the principle of “Quality Parts,Customers Priority,Honest Operation,and Considerate Service”,our business mainly focus on the distribution of electronic components. Line cards we deal with include Microchip,ALPS,ROHM,Xilinx,Pulse,ON,Everlight and Freescale. Main products comprise IC,Modules,Potentiometer,IC Socket,Relay,Connector.Our parts cover such applications as commercial,industrial, and automotives areas.

We are looking forward to setting up business relationship with you and hope to provide you with the best service and solution. Let us make a better world for our industry!



Contact us

Tel: +86-755-8981 8866 Fax: +86-755-8427 6832

Email & Skype: info@chipsmall.com Web: www.chipsmall.com

Address: A1208, Overseas Decoration Building, #122 Zhenhua RD., Futian, Shenzhen, China



Flush-type connector - SACC-DSI-MINFS-5CON-M26/1,0 - 1453805

Please be informed that the data shown in this PDF Document is generated from our Online Catalog. Please find the complete data in the user's documentation. Our General Terms of Use for Downloads are valid (<http://download.phoenixcontact.com>)



Sensor/actuator flush-type socket, 5-pos., 7/8", rear mounting with M26 fastening thread, with 1.0 m PE litz wire, 5 x 0.75 mm²



Key commercial data

| | |
|--------------------------------------|-----------|
| Packing unit | 1 1 |
| Weight per Piece (excluding packing) | 140.0 GRM |
| Custom tariff number | 85444290 |
| Country of origin | Germany |

Technical data

Dimensions

| | |
|-----------------|-----|
| Length of cable | 1 m |
|-----------------|-----|

Ambient conditions

| | |
|---------------------------------|---------------------------|
| Ambient temperature (operation) | -40 °C ... 85 °C (Socket) |
| Degree of protection | IP67 |

General

| | |
|------------------------|-------------------|
| Rated current at 40°C | 9 A |
| Rated voltage | 250 V |
| Number of positions | 5 |
| Contact resistance | ≤ 5 mΩ |
| Insulation resistance | ≥ 100 MΩ |
| Status display | No |
| Surge voltage category | II |
| Pollution degree | 3 |
| Connection method | Individual wires |
| Mounting type | Rear mounting M26 |

Flush-type connector - SACC-DSI-MINFS-5CON-M26/1,0 - 1453805

Technical data

Material

| | |
|---|------------------------------|
| Inflammability class according to UL 94 | HB |
| Contact material | CuZn |
| Contact surface material | Au |
| Contact carrier material | PUR |
| Material, knurls | Zinc die-cast, nickel-plated |

Cable

| | |
|------------------------------------|--|
| Cable type | PVC litz wire |
| Conductor cross section | 0.75 mm ² |
| AWG signal line | 18 |
| Conductor structure signal line | 24x 0.20 mm |
| Core diameter including insulation | 2.7 mm |
| Thickness, insulation | 0.85 mm (Core insulation) |
| Wire colors | brown, white, blue, black, green-yellow |
| Material conductor insulation | PVC |
| Ambient temperature (operation) | -40 °C ... 85 °C (cable, fixed installation) |

Classifications

eCl@ss

| | |
|------------|----------|
| eCl@ss 4.0 | 27140815 |
| eCl@ss 4.1 | 27140815 |
| eCl@ss 5.0 | 27143423 |
| eCl@ss 5.1 | 27143423 |
| eCl@ss 6.0 | 27143423 |
| eCl@ss 7.0 | 27449001 |
| eCl@ss 8.0 | 27449001 |

ETIM

| | |
|----------|----------|
| ETIM 4.0 | EC002061 |
| ETIM 5.0 | EC002061 |

UNSPSC

| | |
|---------------|----------|
| UNSPSC 6.01 | 31251501 |
| UNSPSC 7.0901 | 31251501 |
| UNSPSC 11 | 31251501 |
| UNSPSC 12.01 | 31251501 |
| UNSPSC 13.2 | 31251501 |

Flush-type connector - SACC-DSI-MINFS-5CON-M26/1,0 - 1453805

Approvals

Approvals

Approvals

UL Recognized / cUL Recognized / GOST / cULus Recognized

Ex Approvals

Approvals submitted

Approval details

| | |
|--------------------------------|-------|
| UL Recognized | |
| mm ² /AWG/kcmil | 20 |
| Nominal current I _N | 8 A |
| Nominal voltage U _N | 600 V |

| | |
|--------------------------------|-------|
| cUL Recognized | |
| mm ² /AWG/kcmil | 20 |
| Nominal current I _N | 8 A |
| Nominal voltage U _N | 600 V |

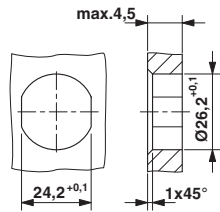
| | |
|------|--|
| GOST | |
|------|--|

| | |
|------------------|--|
| cULus Recognized | |
|------------------|--|

Drawings

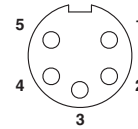
Flush-type connector - SACC-DSI-MINIFS-5CON-M26/1,0 - 1453805

Dimensioned drawing



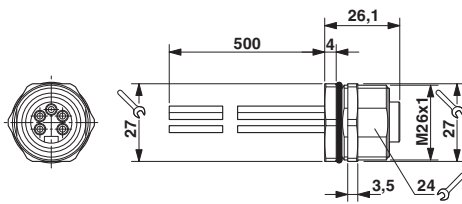
Housing cutout

Schematic diagram



Connector pin assignment

Dimensioned drawing



7/8" flush-type socket

Circuit diagram

