



Chipsmall Limited consists of a professional team with an average of over 10 year of expertise in the distribution of electronic components. Based in Hongkong, we have already established firm and mutual-benefit business relationships with customers from,Europe,America and south Asia,supplying obsolete and hard-to-find components to meet their specific needs.

With the principle of "Quality Parts,Customers Priority,Honest Operation,and Considerate Service",our business mainly focus on the distribution of electronic components. Line cards we deal with include Microchip,ALPS,ROHM,Xilinx,Pulse,ON,Everlight and Freescale. Main products comprise IC,Modules,Potentiometer,IC Socket,Relay,Connector.Our parts cover such applications as commercial,industrial, and automotives areas.

We are looking forward to setting up business relationship with you and hope to provide you with the best service and solution. Let us make a better world for our industry!



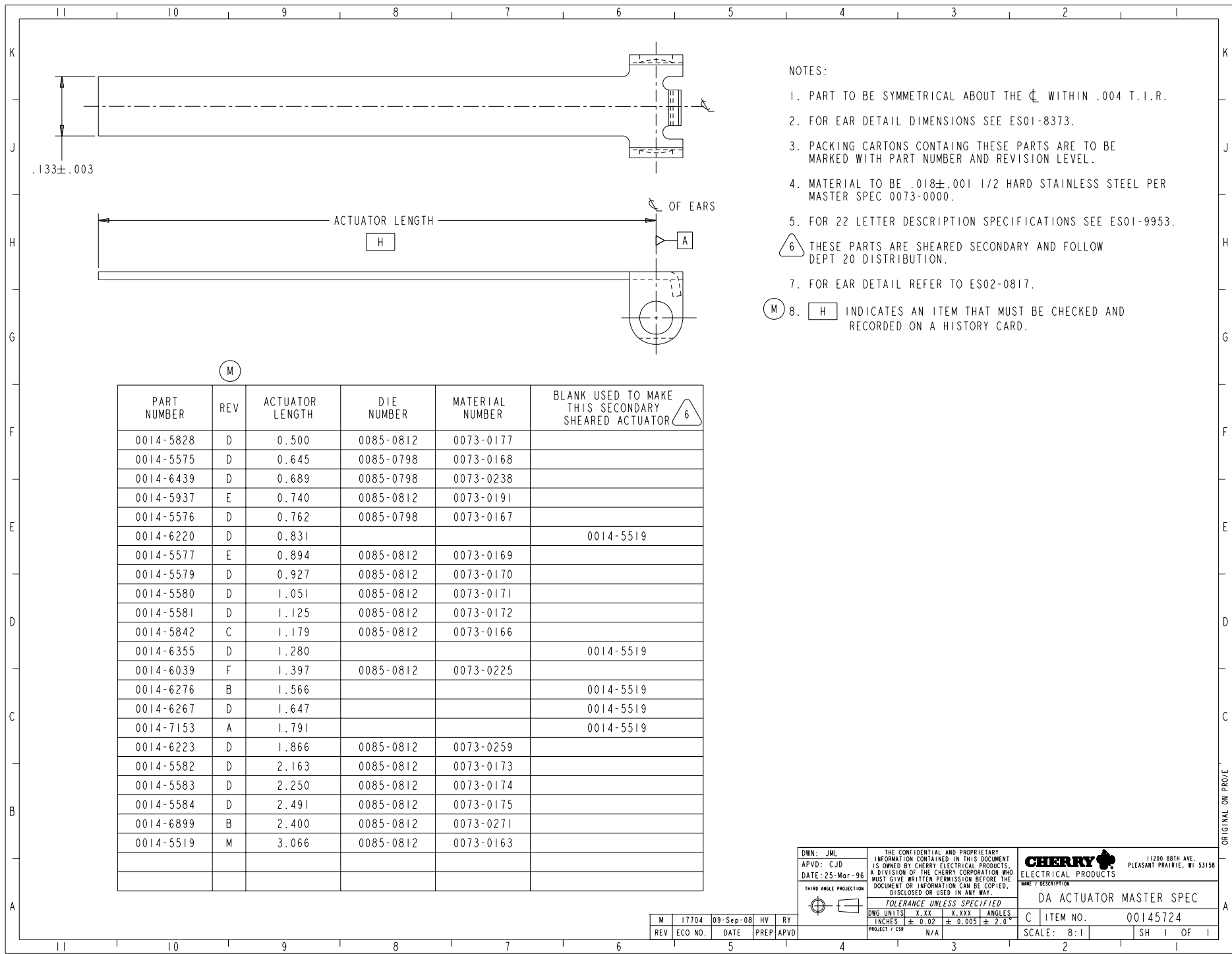
Contact us

Tel: +86-755-8981 8866 Fax: +86-755-8427 6832

Email & Skype: info@chipsmall.com Web: www.chipsmall.com

Address: A1208, Overseas Decoration Building, #122 Zhenhua RD., Futian, Shenzhen, China





NOTES:

1. PART TO BE SYMMETRICAL ABOUT THE ϕ WITHIN .004 T.I.R.
2. FOR EAR DETAIL DIMENSIONS SEE ES01-8373.
3. PACKING CARTONS CONTAING THESE PARTS ARE TO BE MARKED WITH PART NUMBER AND REVISION LEVEL.
4. MATERIAL TO BE .018±.001 1/2 HARD STAINLESS STEEL PER MASTER SPEC 0073-0000.
5. FOR 22 LETTER DESCRIPTION SPECIFICATIONS SEE ES01-9953.
- 6 THESE PARTS ARE SHEARED SECONDARY AND FOLLOW DEPT 20 DISTRIBUTION.
7. FOR EAR DETAIL REFER TO ES02-0817.
8. H INDICATES AN ITEM THAT MUST BE CHECKED AND RECORDED ON A HISTORY CARD.

(M)

PART NUMBER	REV	ACTUATOR LENGTH	DIE NUMBER	MATERIAL NUMBER	BLANK USED TO MAKE THIS SECONDARY SHEARED ACTUATOR 6
0014-5828	D	0.500	0085-0812	0073-0177	
0014-5575	D	0.645	0085-0798	0073-0168	
0014-6439	D	0.689	0085-0798	0073-0238	
0014-5937	E	0.740	0085-0812	0073-0191	
0014-5576	D	0.762	0085-0798	0073-0167	
0014-6220	D	0.831			0014-5519
0014-5577	E	0.894	0085-0812	0073-0169	
0014-5579	D	0.927	0085-0812	0073-0170	
0014-5580	D	1.051	0085-0812	0073-0171	
0014-5581	D	1.125	0085-0812	0073-0172	
0014-5842	C	1.179	0085-0812	0073-0166	
0014-6355	D	1.280			0014-5519
0014-6039	F	1.397	0085-0812	0073-0225	
0014-6276	B	1.566			0014-5519
0014-6267	D	1.647			0014-5519
0014-7153	A	1.791			0014-5519
0014-6223	D	1.866	0085-0812	0073-0259	
0014-5582	D	2.163	0085-0812	0073-0173	
0014-5583	D	2.250	0085-0812	0073-0174	
0014-5584	D	2.491	0085-0812	0073-0175	
0014-6899	B	2.400	0085-0812	0073-0271	
0014-5519	M	3.066	0085-0812	0073-0163	

DWN: JML	THE CONFIDENTIAL AND PROPRIETARY INFORMATION CONTAINED IN THIS DOCUMENT IS OWNED BY CHERRY ELECTRICAL PRODUCTS, A DIVISION OF THE CHERRY CORPORATION WHO MUST GIVE WRITTEN PERMISSION BEFORE THE DOCUMENT OR INFORMATION CAN BE COPIED, DISCLOSED OR USED IN ANY WAY.		 11200 88TH AVE. PLEASANT PRAIRIE, WI 53158 ELECTRICAL PRODUCTS
APVD: CJD	TOLERANCE UNLESS SPECIFIED		
DATE: 25-Mar-96	DWS UNITS: X .XX X.XXX ANGLES INCHES: ± 0.02 ± 0.005 ± 2.0		DA ACTUATOR MASTER SPEC
THIRD ANGLE PROJECTION	PROJECT / CSR: N/A		C ITEM NO. 00145724
M 17704	09-Sep-08	HV RY	SCALE: 8:1
REV	ECO NO.	DATE	PREP APVD

ORIGINAL ON PROJE