



Chipsmall Limited consists of a professional team with an average of over 10 year of expertise in the distribution of electronic components. Based in Hongkong, we have already established firm and mutual-benefit business relationships with customers from,Europe,America and south Asia,supplying obsolete and hard-to-find components to meet their specific needs.

With the principle of “Quality Parts,Customers Priority,Honest Operation,and Considerate Service”,our business mainly focus on the distribution of electronic components. Line cards we deal with include Microchip,ALPS,ROHM,Xilinx,Pulse,ON,Everlight and Freescale. Main products comprise IC,Modules,Potentiometer,IC Socket,Relay,Connector.Our parts cover such applications as commercial,industrial, and automotives areas.

We are looking forward to setting up business relationship with you and hope to provide you with the best service and solution. Let us make a better world for our industry!



Contact us

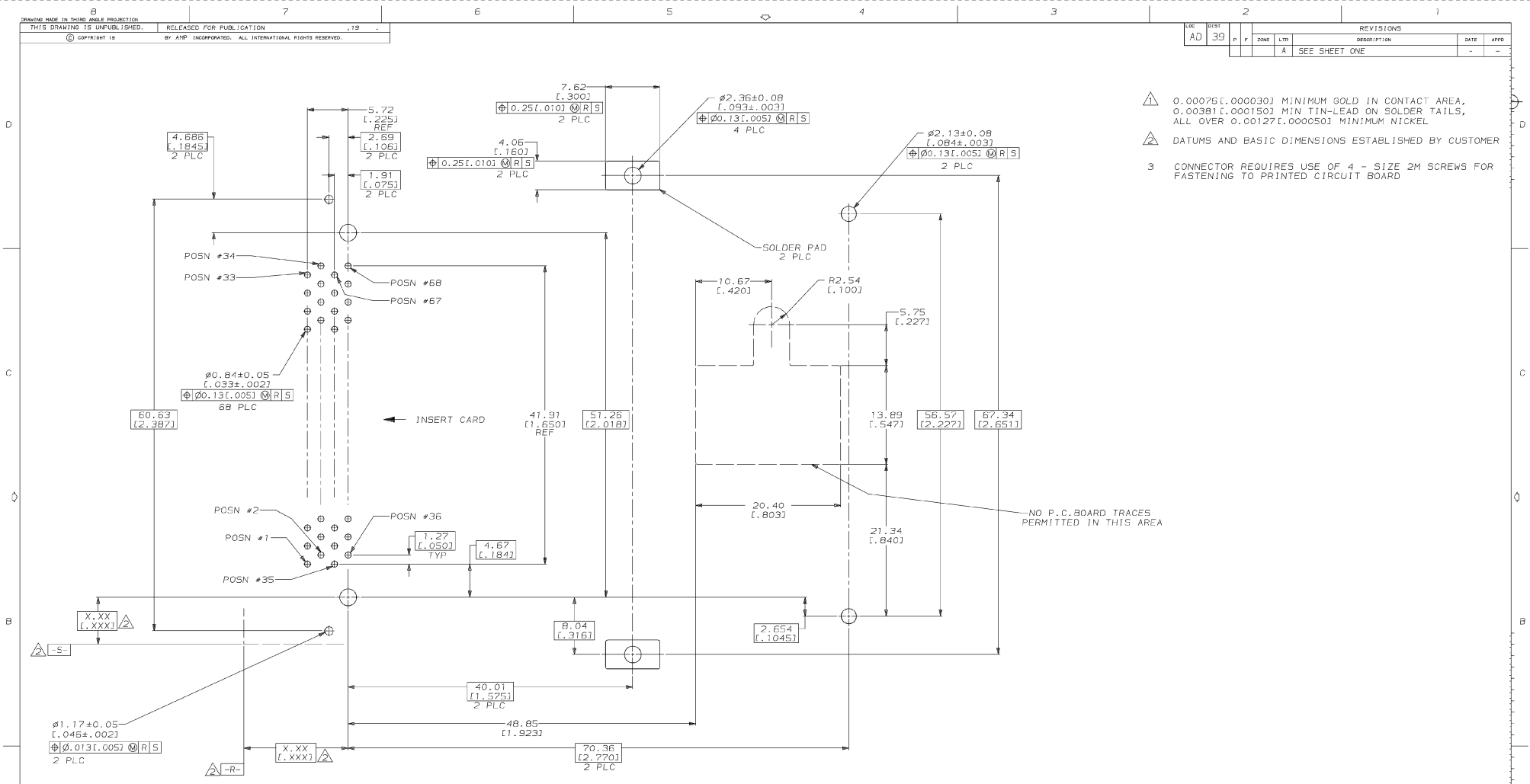
Tel: +86-755-8981 8866 Fax: +86-755-8427 6832

Email & Skype: info@chipsmall.com Web: www.chipsmall.com

Address: A1208, Overseas Decoration Building, #122 Zhenhua RD., Futian, Shenzhen, China



REVISIONS					
REV	DATE	BY	ZONE	DESCRIPTION	APPD
AD	39		A	SEE SHEET ONE	



- 1 0.0025[±.000030] MINIMUM GOLD IN CONTACT AREA, 0.0038[±.000150] MIN TIN-LEAD ON SOLDER TAILS, ALL OVER 0.00127[±.000050] MINIMUM NICKEL
- 2 DATUMS AND BASIC DIMENSIONS ESTABLISHED BY CUSTOMER
- 3 CONNECTOR REQUIRES USE OF 4 - SIZE 2M SCREWS FOR FASTENING TO PRINTED CIRCUIT BOARD

RECOMMENDED BOARD LAYOUT

DO NOT SCALE PRINT. UNLESS SPECIFIED DIMENSIONS IN mm (INCHES) TOLERANCES ON + 2 PLC DEC = 0.13 (±.005) 3 PLC DEC = - ANGLES = -	DR 6/21/94 D WENTZ
MATERIAL	CHK 6/21/94 B ELICKER
FINISH	APPD 6/21/94 B ELICKER
APPLICATION SPEC	PRODUCT SPEC
WEIGHT	

PART NO	
AMP AMP Incorporated Harrisburg, PA 17105-3608	
NAME	CONNECTOR ASSY, PIN HEADER WITH RH EJECTOR, 68 POSN, BOTTOM BD MT6, THRU-HOLE, AMP MEMORY CARD
SIZE	CAGE CODE DRAWING NO D 00779 C-146070
SCALE	4:1 SHEET 2 OF 2

THIS DRAWING IS A CONTROLLED DOCUMENT FOR AMP INCORPORATED. IT IS SUBJECT TO CHANGE AND THE CONTROLLING ENGINEERING ORGANIZATION SHOULD BE CONTACTED FOR THE LATEST REVISION.

CUSTOMER DRAWING