



Chipsmall Limited consists of a professional team with an average of over 10 year of expertise in the distribution of electronic components. Based in Hongkong, we have already established firm and mutual-benefit business relationships with customers from,Europe,America and south Asia,supplying obsolete and hard-to-find components to meet their specific needs.

With the principle of “Quality Parts,Customers Priority,Honest Operation,and Considerate Service”,our business mainly focus on the distribution of electronic components. Line cards we deal with include Microchip,ALPS,ROHM,Xilinx,Pulse,ON,Everlight and Freescale. Main products comprise IC,Modules,Potentiometer,IC Socket,Relay,Connector.Our parts cover such applications as commercial,industrial, and automotives areas.

We are looking forward to setting up business relationship with you and hope to provide you with the best service and solution. Let us make a better world for our industry!



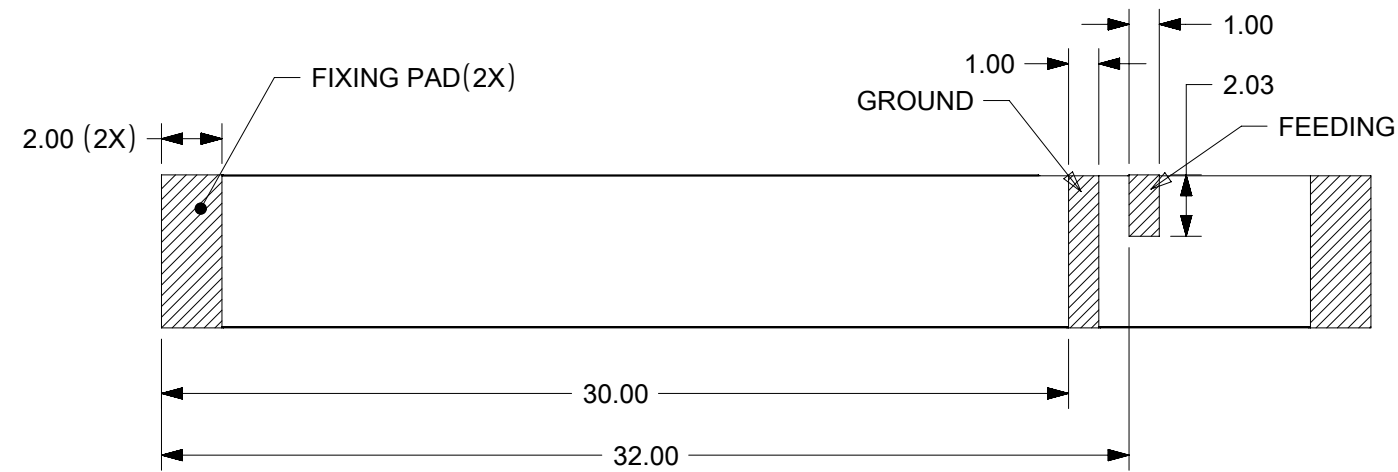
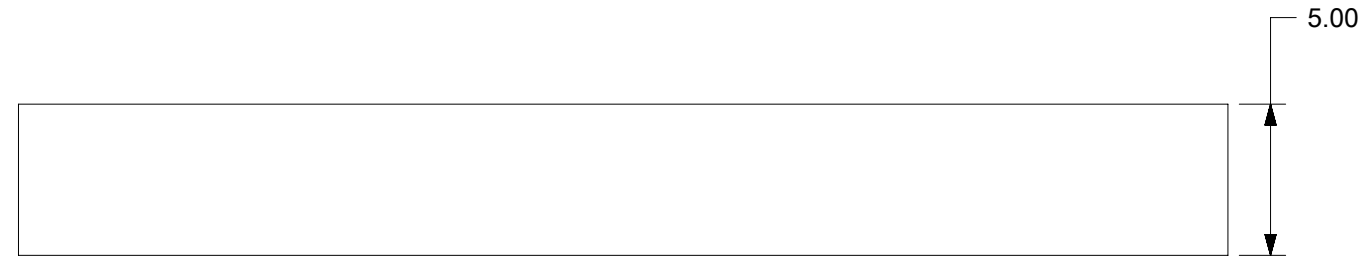
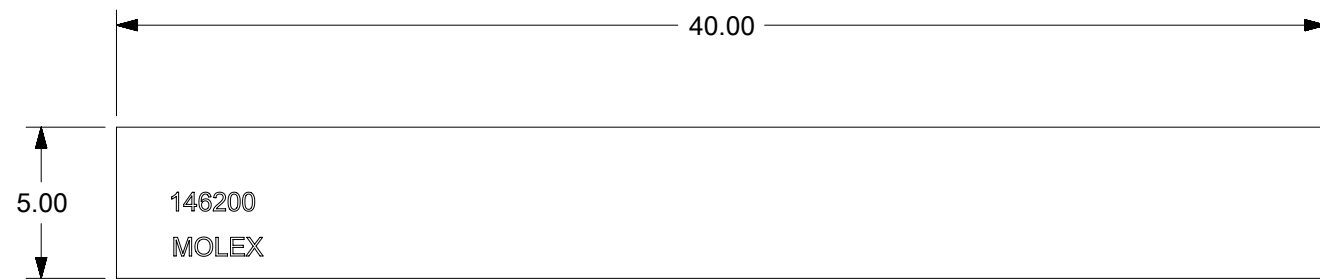
Contact us

Tel: +86-755-8981 8866 Fax: +86-755-8427 6832

Email & Skype: info@chipsmall.com Web: www.chipsmall.com

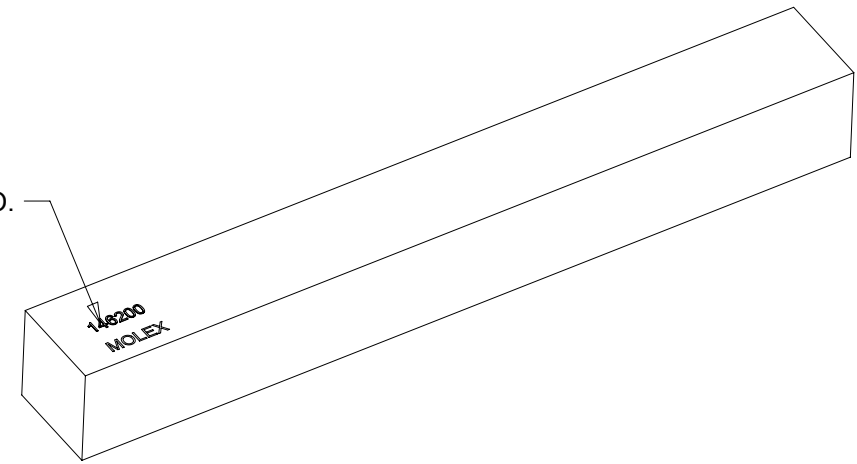
Address: A1208, Overseas Decoration Building, #122 Zhenhua RD., Futian, Shenzhen, China



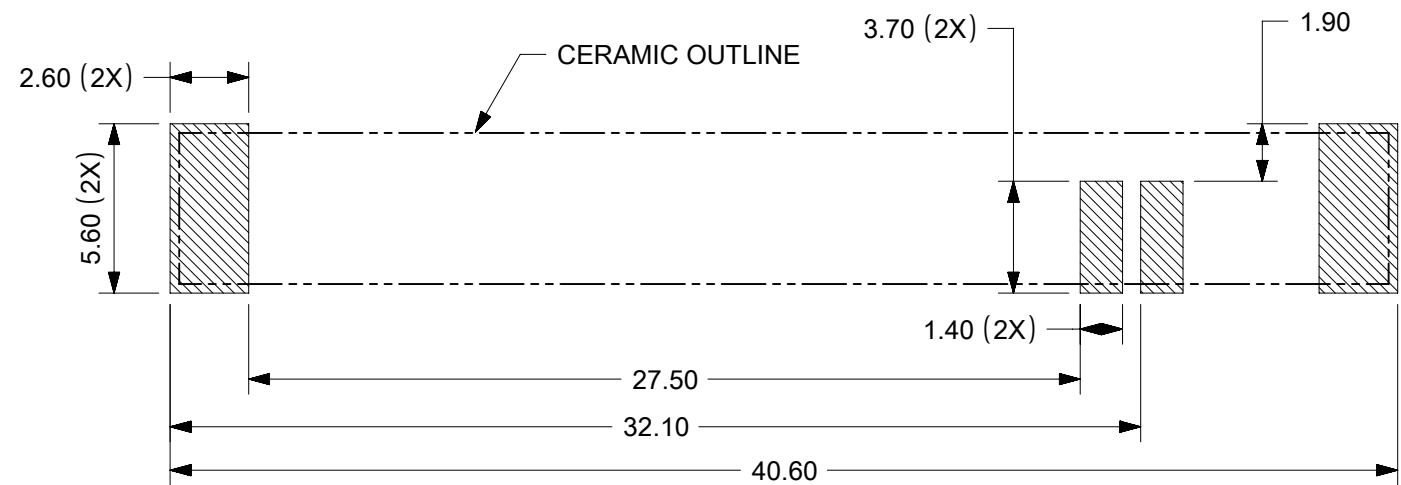


PADS OF PRODUCT FOR SOLDER

LOGO WITH SERIES NO.



3D VIEW



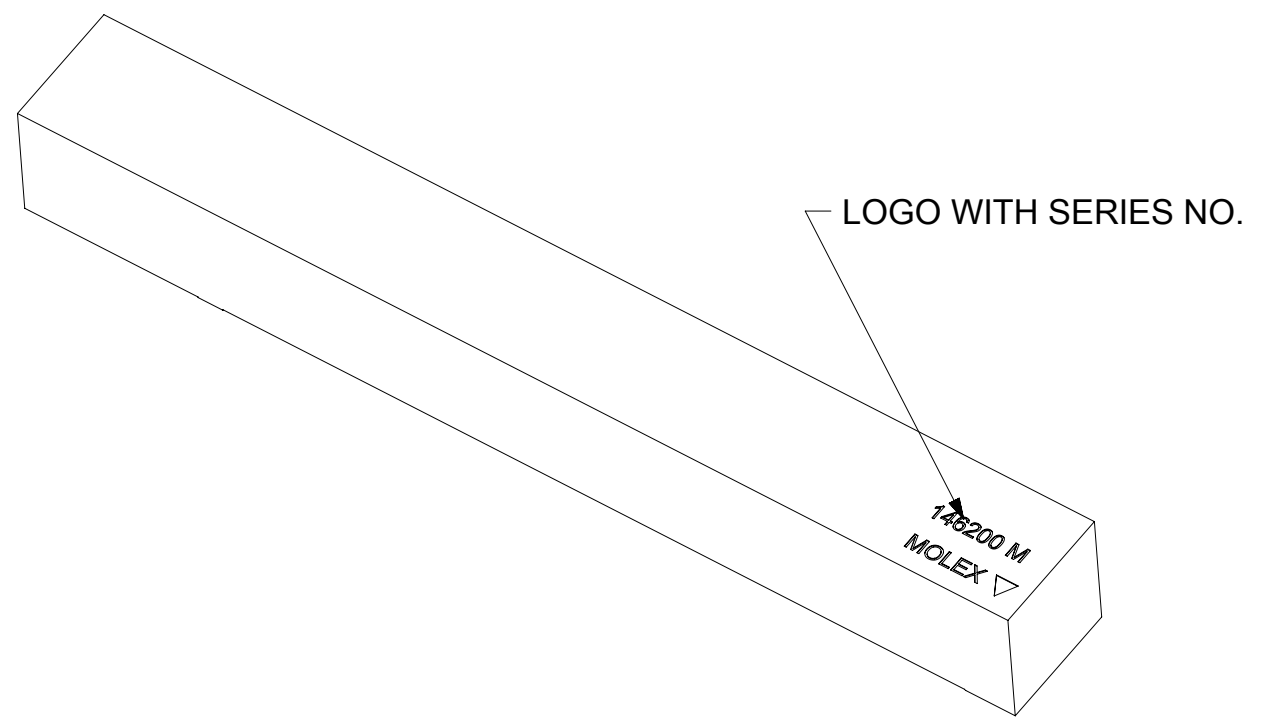
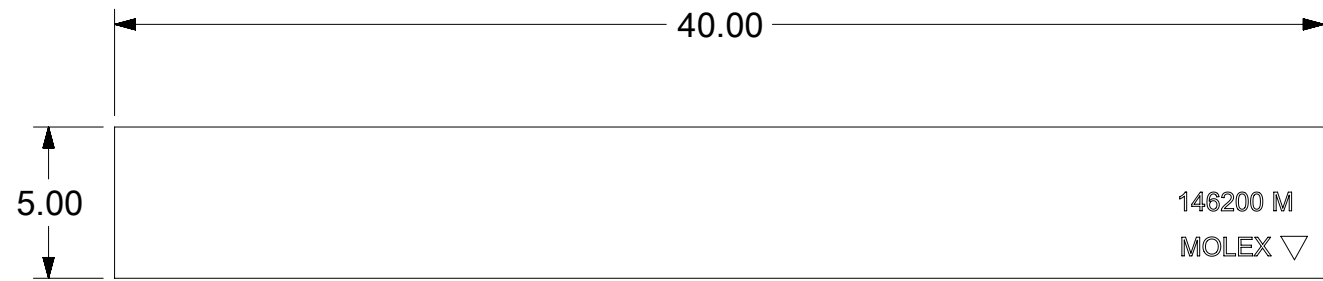
RECOMMENDED PCB LAYOUT

NOTES:

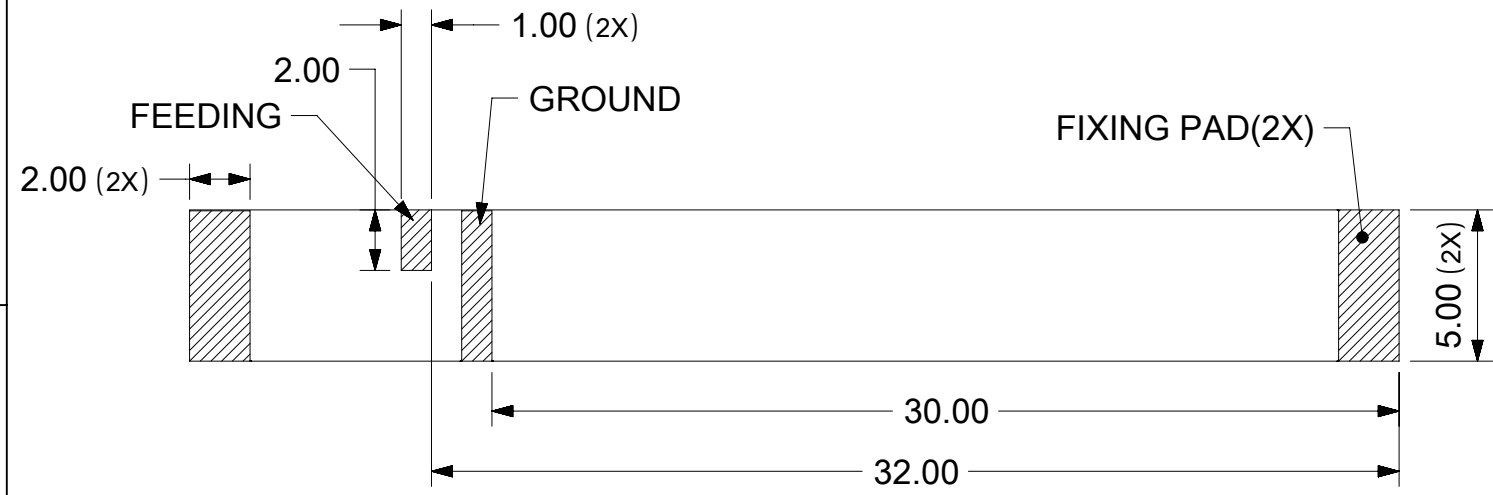
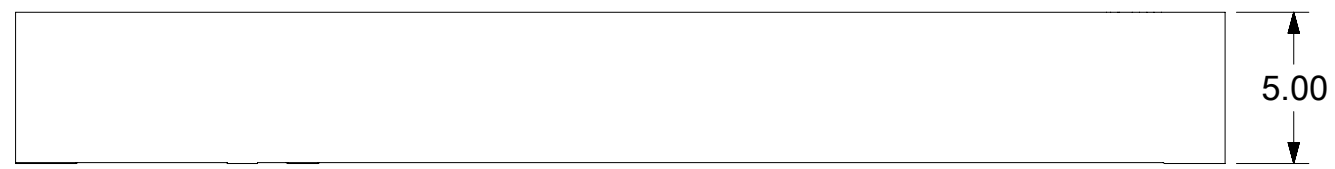
1. MATERIAL: CERAMIC, P/N: 1462000001
2. PATTERN: Ag PLATED, THICKNESS 6-11um
3. PACKAGE SPEC. REFER TO PK OF 1462000001
4. PRODUCT SPEC. REFER TO PS OF 1462000001
5. APPLICATION SPEC. REFER TO AS OF 1462000001
6. SUGGEST TO USE RED GLUE UNDER PART BEFORE SMT IF APPLICATION CONDITION IS STRICT

THIS DRAWING CONTAINS INFORMATION THAT IS PROPRIETARY TO MOLEX ELECTRONIC TECHNOLOGIES, LLC AND SHOULD NOT BE USED WITHOUT WRITTEN PERMISSION											
QUALITY SYMBOLS ▽ = 0 ▽ = 0 ▽ = 0 ▼ = 0 ▽ = 0 ⊠ = 0 ■ = 0 ▽ = 0	EC NO: 170025 DRWN: KCHENG06 CHKD: CXU11 APPR: XJISONG	GENERAL TOLERANCES (UNLESS SPECIFIED)		DIMENSION UNITS MM	SCALE 4:1						
		ANGULAR TOL ± 0.5 °		DRWN BY TZHOU07	DATE 2016/03/25						
		4 PLACES ±		CHK'D BY YXGAO04	DATE 2016/05/24	698MHZ-2.7GHZ FULL LTE SMT ANTENNA					
		3 PLACES ± 0.2		APPR BY CYU08	DATE 2016/07/14						
		2 PLACES ± 0.3		DRAFT WHERE APPLICABLE MUST REMAIN WITHIN DIMENSIONS		DRAWING SIZE A3	THIRD ANGLE PROJECTION	PRODUCT CUSTOMER DRAWING			
		1 PLACE ± 0.5						SERIES 146200	MATERIAL NUMBER 1462000001	CUSTOMER GENERAL MARKET	
0 PLACES ± 1.0						DOCUMENT NUMBER 1462000001		DOC TYPE PSD	DOC PART 000	SHEET NUMBER 1 OF 2	

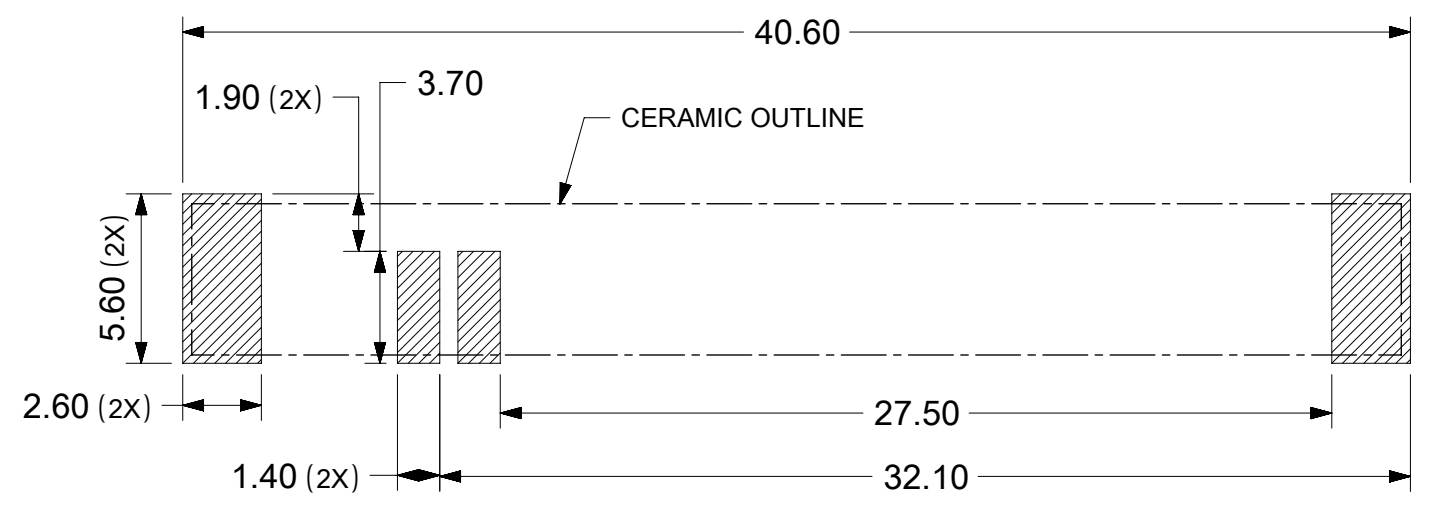
RELEASE STATUS	P1	RELEASE DATE	29.12.2017	04:01:46
----------------	----	--------------	------------	----------



3D VIEW



PADS OF PRODUCT FOR SOLDER



RECOMMENDED PCB LAYOUT

- NOTES:
1. MATERIAL: CERAMIC, P/N: 1462000011
 2. PATTERN: Ag PLATED, THICKNESS 6-11um
 3. PACKAGE SPEC. REFER TO PK OF 1462000001
 4. PRODUCT SPEC. REFER TO PS OF 1462000001
 5. APPLICATION SPEC. REFER TO AS OF 1462000001
 6. SUGGEST TO USE RED GLUE UNDER PART BEFORE SMT IF APPLICATION CONDITION IS STRICT

THIS DRAWING CONTAINS INFORMATION THAT IS PROPRIETARY TO MOLEX ELECTRONIC TECHNOLOGIES, LLC AND SHOULD NOT BE USED WITHOUT WRITTEN PERMISSION										
QUALITY SYMBOLS	EC NO: 170025 DRWN: KCHENG06 CHK'D: CXU11 APPR: XJISONG	GENERAL TOLERANCES (UNLESS SPECIFIED)		DIMENSION UNITS	SCALE					
		ANGULAR TOL ± 0.5 °		MM	4:1					
▽A = 0	2017/11/07 2017/12/27 2017/12/29	4 PLACES ±		DRWN BY	DATE	698MHZ-2.7GHZ FULL LTE SMT ANTENNA				
▽E = 0		3 PLACES ± 0.2		TZHOU07	2016/03/25					
▽F = 0		2 PLACES ± 0.3		CHK'D BY	DATE					
▽ = 0		1 PLACE ± 0.5		YXGAO04	2016/05/24	PRODUCT CUSTOMER DRAWING				
▽C = 0		0 PLACES ± 1.0		APPR BY	DATE	SERIES	MATERIAL NUMBER	CUSTOMER		
⊠ = 0		DRAFT WHERE APPLICABLE MUST REMAIN WITHIN DIMENSIONS		CYU08	2016/07/14	146200		GENERAL MARKET		
■ = 0	C2	REV		DRAWING SIZE	THIRD ANGLE PROJECTION	DOCUMENT NUMBER		DOC TYPE	DOC PART	SHEET NUMBER
▽ = 0				A3		1462000001		PSD	000	2 OF 2